



WISCONSIN INDIANHEAD TECHNICAL COLLEGE

CCSSE 2017 OVERVIEW

November 2017

Prepared by
Office of Research and Data



WISCONSIN
INDIANHEAD
TECHNICAL
COLLEGE



Table of Contents

| | |
|---|----|
| Introduction | 1 |
| Method..... | 2 |
| Findings | |
| Profile of WITC CCSSE Respondents | 3 |
| WITC Student Academic Achievement | 5 |
| CCSSE Benchmarks..... | 5 |
| Student Activities..... | 9 |
| Students' Experience at WITC | 10 |
| Time on Task | 12 |
| Student Satisfaction | 13 |
| Goals and Retention Factors..... | 15 |
| Student Services | 16 |
| Paying for College..... | 17 |
| Successes and Challenges – Above and Below the Mean | 17 |
| First Year Student Experiences..... | 19 |
| Current Academic Year Experiences | 20 |
| Institutional Improvement | 21 |

| | |
|--|----|
| 2017 Special-Focus Questions | 21 |
| Appendix A – Community College Student Report (CCSR)..... | 25 |
| Appendix B – 2017 Participating Colleges..... | 39 |
| Appendix C – CCSSE Survey Results by Campus..... | 51 |
| Appendix D – CCSSE Survey Results by Comparison Groups | 85 |

INTRODUCTION

Background

In the spring of 2017, Wisconsin Indianhead Technical College (WITC) participated in The Community College Survey of Student Engagement (CCSSE). CCSSE, pronounced “cessie,” is a national research initiative designed to provide data on learning-

centered indicators of quality and success for both community and technical colleges. Results of this study will be used to identify areas of institutional strength and weakness, benchmark performance, and monitor improvement efforts.

Purpose

The survey instrument (Appendix A), the Community College Student Report (CCSR), is a versatile, research-based tool with multiple uses. The CCSR specifically examines both institutional practice and student behaviors, especially with respect to retention and learning. In particular, the CCSR instrument gathers information about good educational practices, specifically (a) how students spend their time, (b) retention and risk factors, (c) how they view the campus environment, (d) their perceptions of educational and personal growth, and (e) the extent to which faculty and staff engage students in learning.

NOTE: 2017 marked the first administration of the revised CCSR survey instrument. As a result, CCSSE 2017 utilizes a single-year cohort (2017 CCSSE participant colleges only) in all of its data analyses, including the computation of benchmark scores. This

cohort is referred to as the 2017 CCSSE Cohort. The 2018 CCSSE cohort will include participant colleges from 2017 and 2018, and in 2019, when WITC next participates in the study, CCSSE cohorts will return to the Center's customary three-year cohort model.

For the purpose of showing comparisons, the 297 participating colleges are separated into four groups, small, medium, large and extra large, based on total enrollment. For the purpose of identifying institutional successes and challenges, comparison is made between WITC and other colleges in the Nation. When this comparison is made, WITC is grouped with 135 other colleges that are in the small group.

A listing of all 297 participating colleges and the four comparison groups can be found in Appendix B.

METHOD

Process

Prior to administering the CCSR, WITC submitted a data file to CCSSE that included a listing of Spring 2017 credit courses that counted toward a degree or certificate. From this data file, CCSSE created two random stratified samples—primary and alternate. The alternate sample was only used in instances where primary sample courses were cancelled prior to survey administration, when students were enrolled in more than one primary sample class, or if a faculty member declined participation in the survey.

Prior to conducting the survey, a letter was sent to faculty informing them that the WITC Research and Data Office would contact them to select a

convenient time for conducting the student survey.

WITC campus staff administered surveys to students in class. All survey administrators read the CCSSE script to each class first and then instructed students to complete the survey. Students completed the surveys in 25 to 65 minutes. Completed surveys were collected, placed in an envelope with the class cover sheet, and returned to CCSSE for scanning and analysis.

WITC surveyed 624 students enrolled in undergraduate classes during the second semester of the 2016-2017 academic year, which represents 21% of spring term undergraduate students.

FINDINGS

Profile of WITC CCSSE Respondents

Table 1 shows a comparison of WITC CCSSE respondent characteristics to WITC’s credit student population. There is a significant imbalance between those students that participated in CCSSE compared to WITC’s actual undergraduate enrollment, especially in the gender and enrollment status categories. Approximately 81% of the

respondents reported attending WITC full-time; when actually 37% of WITC’s undergraduate students attend full-time. In addition, 19% of surveyed students reported attending part-time while 63% of WITC students attend part-time. This unbalanced representation is a result of two processes--random class selection and in-class administration.

Table 1
Comparison of CCSSE Respondents to WITC Overall Student Population

| | WITC CCSSE Respondents | WITC’s Overall Student Population |
|--------------------------|---------------------------|--------------------------------------|
| Gender* | | |
| Female | 45% | 64% |
| Male | 55% | 36% |
| Race/Ethnicity | | |
| White | 91% | 92% |
| Asian | 2% | 1% |
| Latino | 1% | 1% |
| Black | 1% | 1% |
| Native American | 4% | 3% |
| Other | 2% | 3% |
| Enrollment Status | | |
| Full-time | 81% | 37% |
| Part-time | 19% | 63% |
| Student Age | | |
| 18 to 29 | 78% | 64% |
| 30 to 39 | 14% | 19% |
| 40 to 49 | 6% | 11% |
| 50 and over | 2% | 7% |

*CCSSE included options of Other/I prefer not to respond. These were considered ‘unknown’ and were removed from the percentage calculations.

A total of 624 WITC students completed the CCSSE survey. Table 2 below shows the number of respondents by campus and the percent that each campus' respondents represent of the total survey population. Also shown in

Table 2 is the total percentage of each campus' undergraduate enrollment for the second semester of Fiscal Year 2016-2017. This unbalanced again is a result of random class selection and in-class administration.

Table 2
Campus Location of Respondents

| Campus | WITC CCSSE Respondents | Percent of Total Survey Population | *Percent of WITC's Undergraduate Population FY 2016-2017 |
|--------------|------------------------|------------------------------------|--|
| Ashland | 42 | 7% | 15% |
| New Richmond | 202 | 32% | 30% |
| Rice Lake | 174 | 28% | 34% |
| Superior | 206 | 33% | 22% |
| Total | 624 | 100% | 100% |

**WITC online students are not included in the overall student population as they cannot currently be surveyed using the CCSSE survey.*

Education Level

Seventy-two percent (72%) of respondents reported that their highest academic credentials were either a high school diploma or a GED, while 24% reported either a vocational certificate or an associate degree. Five percent of respondents indicated they have a bachelor's degree or higher.

First-Generation Status

Nearly half of student responses indicated that neither parent has attended at least some college, these students are considered 'first-generation' status. Students indicate that 62% of their mothers and 50% of

their fathers have at least some college education.

College Experience

Sixty-eight percent (68%) of the respondents reported starting their college career at WITC.

Support Systems

WITC students are fortunate in that they have strong support systems both from their family and friends. Nearly three-fourths (74%) of students indicate that their family is extremely supportive and well over half (57%) feel that their friends are extremely supportive of their attendance at WITC.

WITC Student Academic Achievement

In order to fully understand the impact of the CCSSE results, it is important to consider and understand the organizational and professional development efforts that support WITC's commitment to continuously improve learning. WITC's "Learning First" mission establishes a strong commitment to learner success. To guide faculty and students in the assessment of learning, staff members have established course competencies, program outcomes, and employability essentials.

Course competencies provide an organized framework for planning and implementing a learning experience. This framework focuses on major skills, knowledge, attitudes, or abilities needed to perform a task effectively and efficiently.

Program outcomes are field-specific skills, attitudes, and abilities that

learners are expected to master by the end of a program. Program outcomes go beyond a specific course. They pertain to the entire program.

Employability essentials and indicators are universal in nature and intended to develop personal awareness, career effectiveness, and professionalism. The Collegewide outcomes are as follows:

- Communicate Effectively
- Think Critically
- Be Socially Responsible
- Be Professional

Individuals reading this report should consider the impact of the results in relation to the college's student learning initiatives and learner focus.

As the reader reviews the survey summary, the focus WITC has placed on program outcomes will be obvious in the students' responses.

CCSSE Benchmarks

CCSSE uses a set of five benchmarks of effective educational practice in community/technical colleges. These benchmarks allow participating colleges with missions focused on teaching, learning and student success to gauge and monitor their performance in areas that are central to their work. They also allow colleges the opportunity to compare their performance to other similar colleges.

The five benchmarks encompass 38 engagement items on the CCSR that reflect many of the most important aspects of the student experience. The benchmarks are:

- Active & Collaborative Learning
- Student Effort
- Academic Challenge
- Student-Faculty Interaction
- Support for Learners

Benchmark Scores

Every college has a score for each benchmark, computed by averaging the scores on survey items that comprise that benchmark. Benchmark scores are standardized so that the mean — the average of all participating students — always is 50 and the standard deviation is 25. The most valuable use of benchmarks is to see an individual college's deviation from the mean, and the standardized score provides an easy way to assess whether an individual college is performing above or below the mean (50) on each benchmark. All scores are weighted as

calculated by CCSSE based on the part-time/full-time status reported by surveyed students in comparison to the actual part-time/full-time student enrollments of the surveyed colleges.

As indicated in Figure 1 below, WITC's benchmark scores surpassed the small school cohort score in all five benchmark areas.

Table 3 on the next two pages show the breakdown of WITC's score compared to the CCSSE small college cohort score.

Figure 1
Comparison of Benchmark Scores

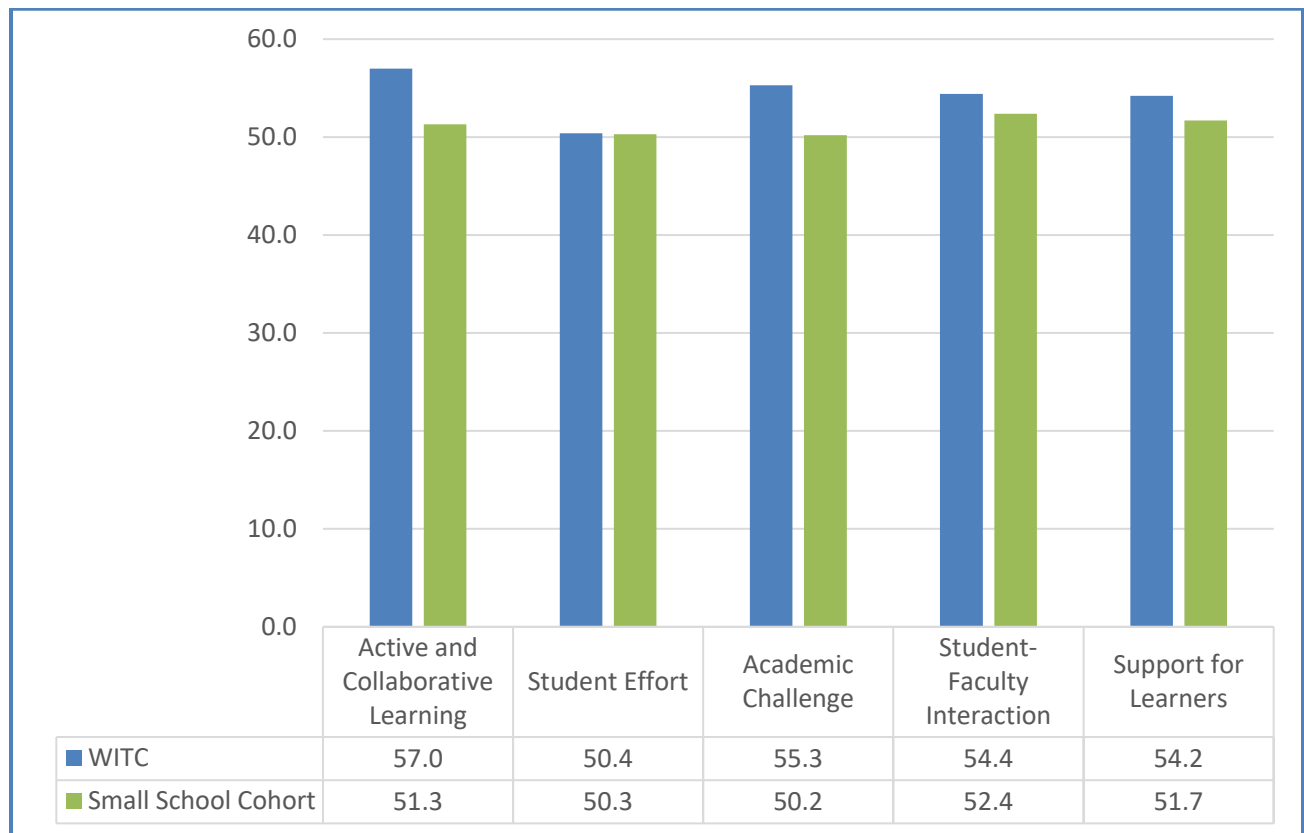


Table 3
Comparison of Benchmark Scores

| Benchmark | WITC College Mean | 2017 CCSSE Small School Mean |
|---|-------------------|------------------------------|
| Active and Collaborative Learning | 57.0 | 51.3 |
| Asked questions in class or contributed to class discussions | 3.22 | 3.00 |
| Made a class presentation | 2.51 | 2.17 |
| Worked with other students on projects during class | 2.79 | 2.60 |
| Worked with classmates outside of class to prepare class assignments | 2.11 | 2.00 |
| Tutored or taught other students (paid or voluntary) | 1.38 | 1.40 |
| Participated in a community-based project as part of a regular course | 1.34 | 1.41 |
| Discussed ideas from your readings or classes with others outside of class (students, family members, co-workers, etc.) | 2.63 | 2.55 |
| Student Effort | 50.4 | 50.3 |
| Prepared two or more drafts of a paper or assignment before turning it in | 2.44 | 2.49 |
| Worked on a paper or project that required integrating ideas or information from various sources | 2.99 | 2.83 |
| Came to class without completing readings or assignments | 1.77 | 1.82 |
| Number of books read on your own (not assigned) for personal enjoyment or academic enrichment | 0.92 | 0.95 |
| Preparing for class (studying, reading, writing, rehearsing, doing homework, or other activities related to your program) | 2.10 | 1.99 |
| Frequency: Peer or other tutoring | 0.45 | 0.69 |
| Frequency: Skill labs (writing, math, etc.) | 0.90 | 0.96 |
| Frequency: Computer lab | 1.74 | 1.56 |
| Academic Challenge | 55.3 | 50.2 |
| Worked harder than you thought you could to meet an instructor's standards or expectations | 2.70 | 2.66 |
| Analyzing the basic elements of an idea, experience, or theory | 3.00 | 2.89 |
| Forming a new idea or understanding from various pieces of information | 2.97 | 2.87 |
| Making judgments about the value or soundness of information, arguments, or methods | 2.64 | 2.65 |
| Applying theories or concepts to practical problems or in new situations | 2.99 | 2.76 |

Table 3 continued

| Benchmark | WITC College Mean | 2017 CCSSE Small School Mean |
|--|-------------------|------------------------------|
| Using information you have read or heard to perform a new skill | 3.07 | 2.90 |
| Number of assigned textbooks, manuals, books, or book-length packets of course readings | 2.36 | 2.07 |
| Number of written papers or reports of any length | 2.00 | 1.81 |
| Mark the response that best represents the extent to which your examinations during the current academic year have challenged you to do your best work at this college | 5.05 | 4.95 |
| Encouraging you to spend significant amounts of time studying | 2.98 | 3.02 |
| Student-Faculty Interaction | 54.4 | 52.4 |
| Used email to communicate with an instructor | 3.00 | 2.96 |
| Discussed grades or assignments with an instructor | 2.77 | 2.70 |
| Talked about career plans with an instructor or advisor | 2.29 | 2.30 |
| Discussed ideas from your readings or classes with instructors outside of class | 1.81 | 1.87 |
| Received prompt feedback (written or oral) from instructors on your performance | 3.04 | 2.81 |
| Worked with instructors on activities other than coursework | 1.63 | 1.57 |
| Support for Learners | 54.2 | 51.7 |
| Providing the support you need to help you succeed at this college | 3.30 | 3.07 |
| Encouraging contact among students from different economic, social, and racial or ethnic backgrounds | 2.65 | 2.62 |
| Helping you cope with your non-academic responsibilities (work, family, etc.) | 2.24 | 2.08 |
| Providing the support you need to thrive socially | 2.45 | 2.29 |
| Providing the financial support you need to afford your education | 2.74 | 2.62 |
| Frequency: Academic advising/ planning | 1.39 | 1.64 |
| Frequency: Career counseling | 0.58 | 0.57 |

Student Activities

The first 19 items on the CCSR asked students to respond to activities that they engaged in during the 2016-2017 academic year. For the purpose of analysis, the response categories of “often” and “very often” were combined into one category to show substantial levels of engagement. Table 4 below

indicates activities where 50% or more of students reported participating in the activity.

The greatest change was the percent of students that made a class presentation, followed by those that used email to communicate with an instructor.

Table 4
Percent of Students Who Reported Participating “Often” or “Very Often” in the Following Student Activities Compared to Previous Years
In Rank Order by 2017 Results

| Activity | Percent of 2017 Students Responding “Often” or “Very Often” | Percent of 2015 Students Responding “Often” or “Very Often” | Percent of 2013 Students Responding “Often” or “Very Often” | Percent of 2011 Students Responding “Often” or “Very Often” | Percent of 2009 Students Responding “Often” or “Very Often” |
|--|---|---|---|---|---|
| Asked questions in class or contributed to class discussions. | 81% | 82% | 86% | 82% | 80% |
| Received prompt feedback (written or oral) from instructors on your performance | 76% | 78% | 76% | 72% | 69% |
| Used email to communicate with an instructor | 73% | 70% | 70% | 70% | 62% |
| Worked on a paper or project that required integrating ideas or information from various sources | 71% | 71% | 74% | 72% | 68% |
| Worked with other students on projects during class | 71% | 71% | 74% | 73% | 73% |
| Discussed grades or assignments with an instructor | 63% | 62% | 64% | 62% | 61% |
| Worked harder than you thought you could to meet an instructor’s standards or expectations | 60% | 61% | 64% | 61% | 57% |
| Discussed ideas from your readings or classes with others outside of class (students, family members, coworkers, etc.) | 55% | 57% | 62% | 62% | 60% |
| Made a class presentation | 52% | 47% | 52% | 45% | 44% |

Students' Experience at WITC

Question 11 on the CCSR asks students to indicate the extent that their experience at WITC contributed to their knowledge, skills, and personal development in various learning activities. For the purpose of analysis, response categories of “very much” and “quite a bit” were combined into one

category to reveal substantial levels of engagement.

In 2017 “thinking critically and analytically” moved to the top of the list over “acquiring job or work-related knowledge and skills”.

Table 5
Percent of Students Who Reported Participating “Quite a Bit” or “Very Much” in the Following Student Activities In Rank Order

| Activity | Percent of Students Responding “Quite a Bit” or “Very Much” |
|--|---|
| Thinking critically and analytically | 77% |
| Acquiring job or work-related knowledge and skills | 76% |
| Working effectively with others | 74% |
| Learning effectively on your own | 73% |
| Developing clearer career goals | 71% |
| Gaining information about career opportunities | 71% |
| Speaking clearly and effectively | 58% |
| Writing clearly and effectively | 56% |
| Solving numeric problems | 53% |

In comparison, it is also important to note what learning activities WITC students were not doing as frequently as expected to be successful in learning. Activities in which 30% or more of students reported they “never” engage in are shown in Table 6.

Results of this question show a substantial increase in the percentage of students that “never” participate in two of the four areas – participated in a community-based project as a part of a regular course, and worked with instructors on activities other than coursework.

Table 6
Percent of Students Who Reported Never Participating in the Following Student Activities In Rank Order by 2017 Results

| Activity | Percent of 2017 Students Responding “Never” | Percent of 2015 Students Responding “Never” | Percent of 2013 Students Responding “Never” | Percent of 2011 Students Responding “Never” | Percent of 2009 Students Responding “Never” |
|---|--|--|--|--|--|
| Tutored or taught other students (paid or voluntary) | 68% | 66% | 60% | 62% | 62% |
| Participated in a community-based project as a part of a regular course | 67% | 58% | 63% | 64% | 56% |
| Worked with instructors on activities other than coursework | 47% | 39% | 45% | 48% | 48% |
| Discussed ideas from your readings or classes with instructors outside of class | 35% | 31% | 33% | 32% | 30% |

Time on Task

The table below illustrates part-time students spend more time working for pay, 21 or more hours per week, than their full-time counterparts (62% vs. 45%). Students' responses also would indicate that part-time students live

closer to the campus they are attending and have more family responsibilities than full-time students. Nearly half of both full-time (46%) and part-time (47%) students spend 6-20 hours a week preparing for class.

Table 7
Time Students Spend on Tasks by Part-Time/Full-Time Status

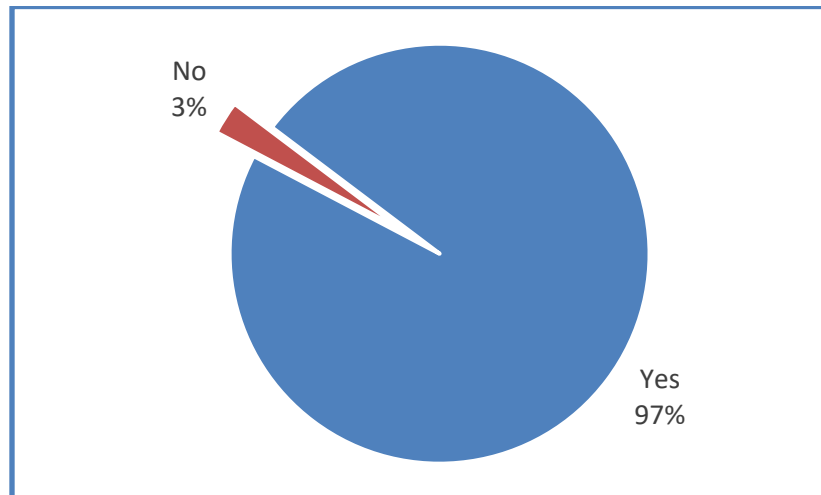
| Tasks | Attend Part-Time | | | Attend Full-Time | | |
|---|------------------|------------|------------------|------------------|------------|------------------|
| | 5 or fewer hours | 6-20 hours | 21 or more hours | 5 or fewer hours | 6-20 hours | 21 or more hours |
| Preparing for class | 43% | 47% | 10% | 35% | 46% | 19% |
| Working for pay | 17% | 21% | 62% | 24% | 31% | 45% |
| Participating in college-sponsored activities | 97% | 3% | 0% | 96% | 3% | 1% |
| Providing care for dependents living with you | 56% | 15% | 30% | 66% | 11% | 23% |
| Commuting to and from classes | 83% | 17% | 1% | 62% | 32% | 5% |

Student Satisfaction

A good measure of satisfaction is whether a person recommends a service or college to others. Question 35 on the CCSR asks students if they

would recommend WITC to a friend or family member. As illustrated in Figure 2, 97% reported they would make such a recommendation.

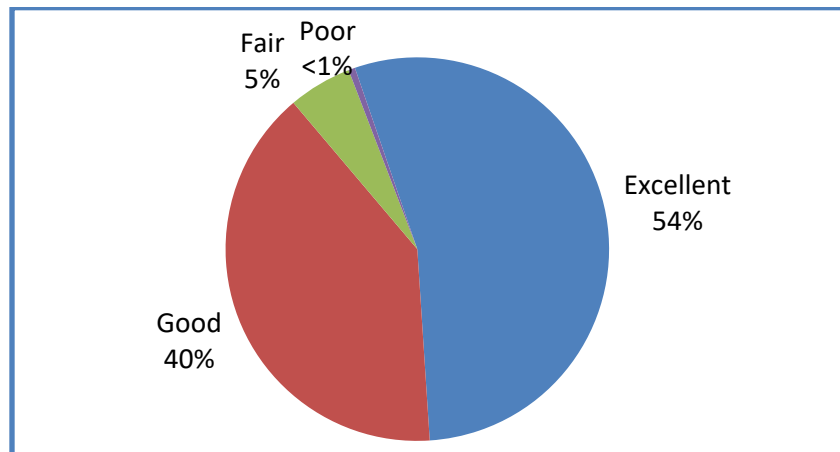
Figure 2
Students Recommending WITC



Students were also asked to evaluate their entire educational experience at WITC. The majority of students, 94%, described their educational experience

as “good” or “excellent”. Less than 1% reported their experience as “poor”, as shown in Figure 3.

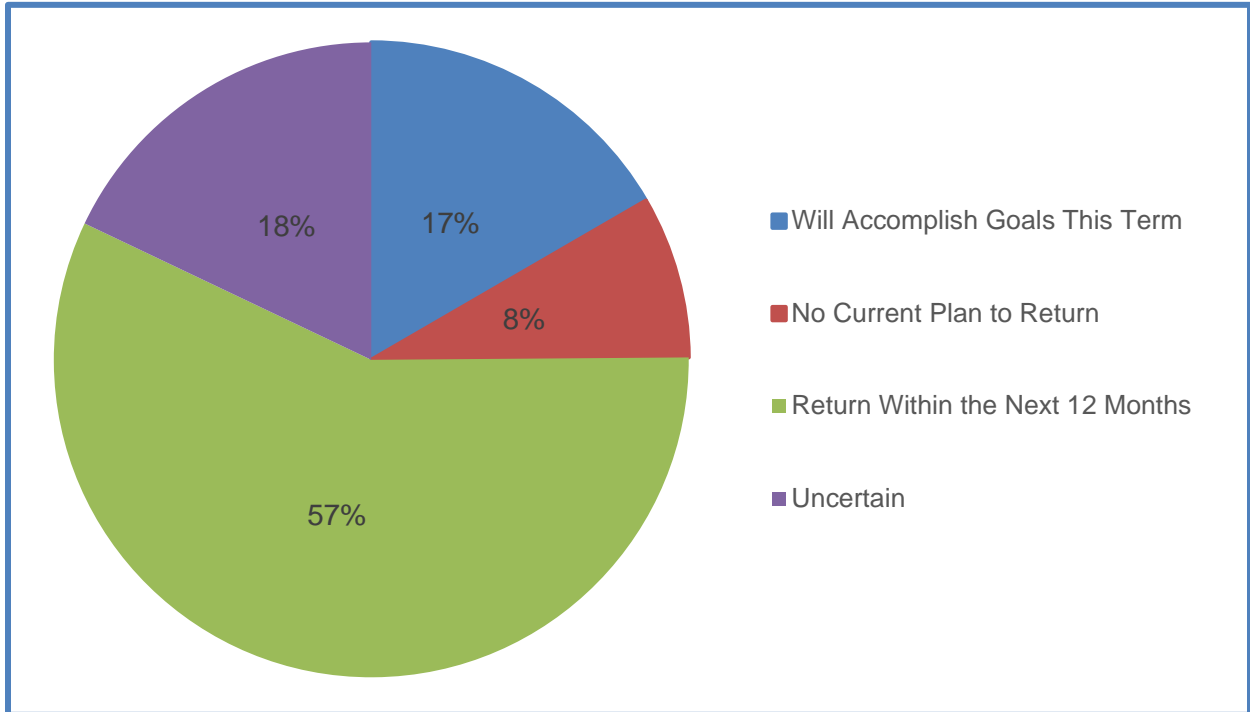
Figure 3
Evaluation of WITC Educational Experience



Another measure of student satisfaction is the percent of returning or successful students. As illustrated in Figure 4 below, 57% of students reported they would return to WITC within the next

year, while 17% reported they “will accomplish their goals this term” and would not be returning to WITC. Twenty-six percent (26%) reported they were “uncertain” or “had no plans to return.”

Figure 4
Future Plans for Attending WITC



Goals and Retention Factors

Students were given the opportunity to indicate “yes” or “no” in response to a list of possible goals for attending WITC. As a result, many students marked more than one goal and therefore the percentages in Table 8 total more than 100%.

Table 8 shows the percent of students by their educational objectives and

goals. As indicated, 74% attend to obtain or update job-related skills and 73% of students enroll in courses for self-improvement/personal enjoyment. Seventy-two percent (72%) of students plan on obtaining an associate degree and 66% plan to complete a certificate program. Forty-four percent (44%) plan to change careers and 32% expect to transfer to a 4-year college or university.

Table 8
Students' Educational Goals

| Educational Goal | Percent of Respondents |
|--|------------------------|
| Obtain or update job-related skills | 74% |
| Self-improvement/personal enjoyment | 73% |
| Obtain an associate degree | 72% |
| Complete a certificate program | 66% |
| Change careers | 44% |
| Transfer to a 4-year college or university | 32% |

Students were asked what issues would force them to withdraw from WITC by responding “very likely,” “likely,” “somewhat likely” and “not likely.” Table 9 shows students' responses to specific issues that would cause them to leave

WITC. Lack of finances and working full-time were the top reasons that would cause a student to withdraw from WITC. Caring for dependents was also a significant reason why a student would stop attending WITC.

Table 9
Factors that Result in Student Departure

| Factor | Very to Somewhat Likely | Not Likely |
|--|-------------------------|------------|
| Lack of finances | 64% | 36% |
| Working full-time | 52% | 48% |
| Caring for dependents | 45% | 55% |
| Academically unprepared | 34% | 66% |
| Transfer to a 4-year college or university | 32% | 68% |

Student Services

It is common for a student survey to ask a combination of satisfaction, use, or importance questions to gauge various student services. Unique to CCSSE is the section that asks students to link all three. Table 10 displays use, satisfaction, and importance of each service. The second set of columns shows the number of times students report using various student services.

The third column represents the percent of students who reported they were “somewhat” or “very” satisfied with the service. The fourth column corresponds

to the percent of students who reported the service was “very” important.

Students reported using computer labs (47%) and library resources and services (28%) more than any other service WITC provides.

Computer labs and library resources also have the highest satisfaction ratings among respondents (96%).

Students rated financial aid advising (69%), computer labs (64%), and academic advising/planning (61%) as the most important student services.

Table 10
Student Services by Frequency of Use, Satisfaction and Importance
In Rank Order by Frequency of Use

| Service Item | Frequency of Use | | | | Satisfaction | Importance |
|---|------------------|-----------|--------|-------|------------------|------------|
| | 5 or more times | 2-4 times | 1 time | Never | (Very/ Somewhat) | (Very) |
| Computer lab | 47% | 21% | 10% | 23% | 96% | 64% |
| Library resources and services | 28% | 27% | 15% | 29% | 96% | 55% |
| Skill labs (writing, math, etc.) | 21% | 16% | 9% | 54% | 92% | 42% |
| Student organizations | 12% | 19% | 12% | 57% | 91% | 27% |
| Academic advising/planning | 11% | 44% | 27% | 18% | 97% | 61% |
| Financial aid advising | 8% | 31% | 28% | 33% | 93% | 69% |
| Peer or other tutoring | 8% | 8% | 9% | 74% | 85% | 37% |
| Services to students with disabilities | 5% | 4% | 4% | 87% | 81% | 48% |
| Career counseling | 4% | 17% | 18% | 60% | 89% | 46% |
| Job placement assistance | 3% | 10% | 11% | 76% | 83% | 45% |
| Child Care | 3% | 1% | 1% | 94% | 60% | 29% |
| Transfer advising/planning | 1% | 8% | 15% | 75% | 81% | 33% |
| Services for active military and veterans | 1% | 3% | 2% | 93% | 68% | 45% |

Note: The denominator for “Satisfaction” excludes students who marked “N.A.”

Paying for College

As indicated in Table 11 below, the majority of students are utilizing student loans and grants to pay their WITC tuition. Over one-third of students are using their own income and savings, 17% utilize scholarships, and 15% rely

on income or savings from family for financial help. Military or veteran benefits, public assistance and employer contributions are not significant resources that WITC students use for paying for their education.

Table 11
Financial Sources for WITC Tuition

| Financial Source | Major Source | Minor Source | Not a source |
|-------------------------------------|--------------|--------------|--------------|
| Student loans (bank, etc.) | 47% | 10% | 43% |
| Grants | 41% | 13% | 46% |
| My own income/savings | 36% | 41% | 23% |
| Scholarships | 17% | 25% | 58% |
| Income/savings from family | 15% | 20% | 66% |
| Active military or veteran benefits | 6% | 2% | 92% |
| Employer contributions | 5% | 7% | 88% |
| Public assistance | 5% | 5% | 91% |

Successes and Challenges – Above and Below the Mean

Tables 12 and 13, on the next page, lists areas where WITC either fell notably above or below the mean of all other small-sized colleges participating in the spring 2017 study. The items that appear under Table 12 are items where WITC averages were significantly higher than all other small colleges. Items that appear under Table 13 are items where WITC averages were significantly lower.

A score above or below the mean does not specifically indicate a success or a challenge due to the format of the question or statement in which students responded. In WITC’s case, with the exception of two items, all items in Tables 12 and 13 are considered to be successes for the college. The areas where WITC scored below the mean

and are considered to be challenges are the frequency that students had serious conversations with students of a different race or ethnicity other than their own, and students being academically unprepared. Responses to one other activity (transferring to a 4-year college or university) was an area where WITC scored below the mean, but in that activity a score below the mean is actually a success for the college.

The frequency in which a student utilized academic advising or planning could be either a success or a challenge depending on the individual student.

It should be noted that “Demographic” items have been excluded from “Successes” and “Challenges.”

Table 12
Above the Mean

| |
|---|
| COLLEGE ACTIVITIES |
| Asked questions in class or contributed to class discussions |
| Made a class presentation |
| Worked with other students on projects during class |
| Received prompt feedback (written or oral) from instructors on your performance |
| Applying theories or concepts to practical problems or in new situations |
| Number of assigned textbooks, manuals, books, or packets of course readings |
| OPINIONS ABOUT YOUR SCHOOL |
| Providing the support you need to help you succeed at this college |
| WEEKLY ACTIVITIES |
| Working for pay |
| CLASS TYPE |
| Face-to-face (a class in which all instruction is face-to-face in a classroom) |
| EDUCATIONAL AND PERSONAL GROWTH |
| Acquiring job or work-related knowledge and skills |
| Gaining information about career opportunities |
| STUDENT SERVICES |
| Frequency: Services for students with disability |
| Satisfaction: Job placement services |
| Satisfaction: Financial aid advising |
| COLLEGE EXPERIENCES |
| How would you evaluate your entire educational experience at this college? |

Table 13
Below the Mean

| |
|--|
| STUDENT SERVICES |
| Frequency: Academic advising/planning |
| Frequency: Peer or other tutoring |
| Frequency: Transfer advising/planning |
| Satisfaction: Transfer advising/planning |
| COLLEGE EXPERIENCES |
| Academically unprepared |
| Transfer to a 4-year college or university |
| How many total credit hours have you earned at this college, not counting the courses you are currently taking this academic term? |
| How many total academic terms have you been enrolled at this college? |

First Year Student Experiences

The 2017 CCSSE survey revision moved ten questions from the Special Focus Questions section to the CSSR survey instrument. Five of these questions focused on various areas within the students' first term or first year at the college, including registration, orientation, student success and developmental/remedial courses.

Table 14 looks at the percent of students participating in an organized learning community (21%), a student

success course (15%), and a first-year experience program (14%).

Figure 5 shows over half (60%) of WITC's students attended an on-campus orientation prior to beginning classes.

In Figure 6 on the next page, 53% of the students that were told they should enroll in a remedial course during their first academic term at WITC, did not enroll in one.

Table 14
First-Academic Term Participation

| Type of Participation | Yes | No |
|---|-----|-----|
| Organized learning community (a formal program in which groups of students take two or more classes together) | 21% | 79% |
| Student success course (a course that teaches the skills needed to succeed in college) | 15% | 85% |
| First-year experience program | 14% | 86% |

Figure 5
Time Frame Students Attended Orientation

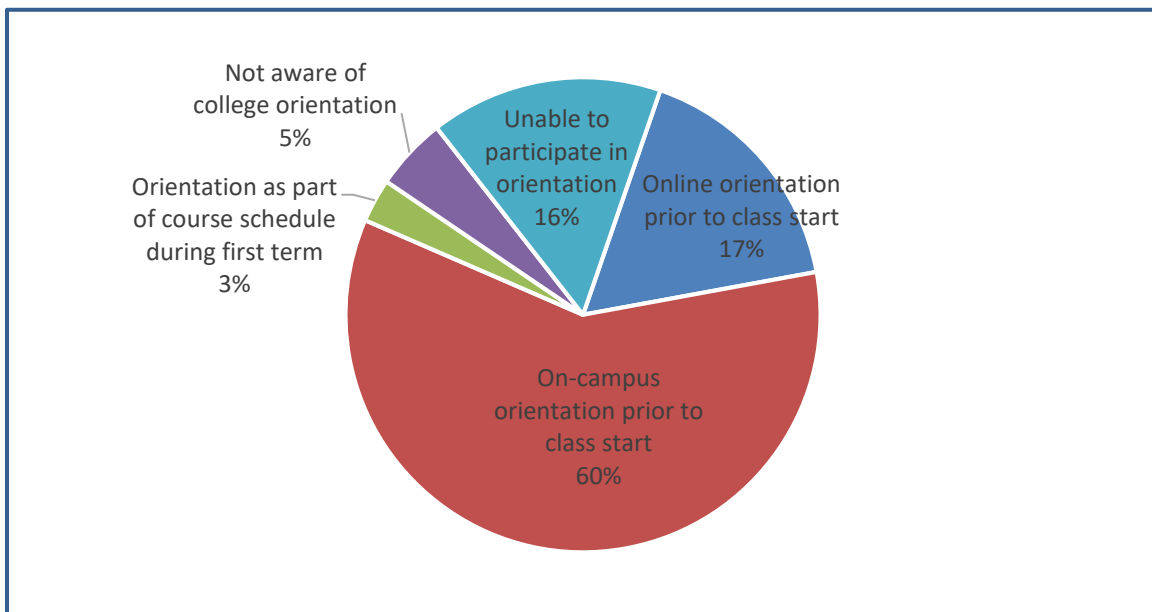
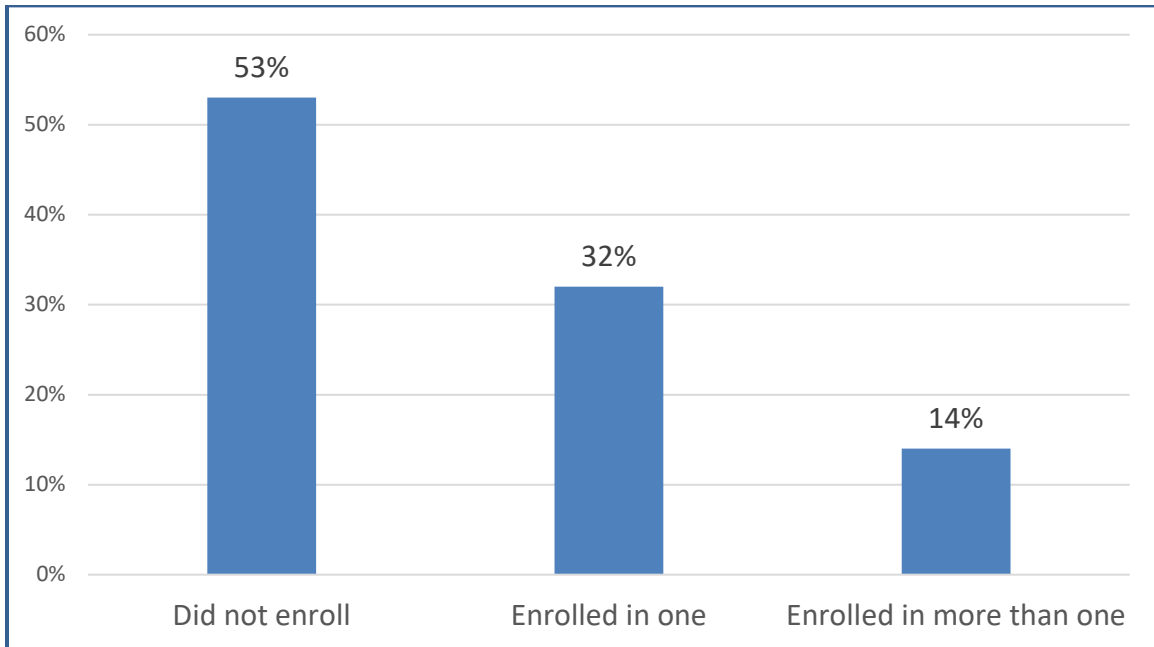


Figure 6
Response of Students Advised to Enroll in Remedial Courses



Current Academic Year Experiences

The remaining five new questions included in the 2017 CCSR focused on student experiences during the current academic year. These questions focused on registration, attendance policies, establishing an academic plan, and supplemental instruction or assistance.

Registration

Before the first class session, nearly all students (95%) were registered for all their courses, and an additional 3% were registered for most of their courses.

Attendance Policy

Students reported their instructors explained a class attendance policy that specified how many classes could be missed without a penalty. Eighty percent

(80%) reported all instructors, and 10% said most instructors explained their class policy.

Developed Academic Plan

When students who had completed their first academic term were asked if an advisor had helped them to develop an academic plan within their first term, 55% responded 'Yes.'

Supplemental Instruction

Over half (53%) of the students responding said someone at WITC contacts them if they are struggling with their studies to help get the assistance needed. During the current academic year, 80% of students never participated in supplemental instruction, while nine percent (9%) did participate at least one time a week.

Institutional Improvement

Individual survey question results for WITC are compiled and reported by campus in Appendix C. (Campus results are compiled using actual frequencies and are not weighted based on full-time/part-time enrollment status of students.)

CCSSE data serves as a diagnostic function for the college by identifying institutional strengths and challenges in terms of effective educational practice. Because of this, CCSSE results are especially useful for benchmarking, or

comparing and measuring WITC against similar technical and community colleges that also participated in the study. Appendix D contains a summary of WITC responses, CCSSE small college consortium, and the total CCSSE national survey population responses. These percentages are all weighted scores as calculated by CCSSE based on the part-time/full-time status reported by surveyed students in comparison to the actual part-time/full-time student enrollments of the surveyed colleges.

2017 Special-Focus Questions

CCSSE has established a regular feature that allows colleges to delve more deeply into areas of student experience and institutional performance that are fundamental to student success. The twenty 2017 “Special-Focus Questions” centered on academic advising and planning.

These questions primarily focused on the frequency and types of contact students had with an academic advisor in helping to meet their educational goals. Responses to the special focus questions can be found at the end of Appendices C and D.

Appendix A



THE COMMUNITY COLLEGE
SURVEY
 OF STUDENT
ENGAGEMENT

Instructions: It is essential that you use a No. 2 pencil to complete this survey. Mark your answers as shown in the following example:

Correct Mark
 Incorrect Marks

1. Did you begin college at this college or elsewhere? Started here Started elsewhere
2. Thinking about this current academic term, how would you characterize your enrollment at this college? Full-time Less than full-time
3. Have you taken this survey in another class this academic term? Yes No

4. In your experiences at this college during the current academic year, about how often have you done each of the following?
 (Please respond to each item)

| | Very often | Often | Some-times | Never |
|--|-----------------------|-----------------------|-----------------------|-----------------------|
| a. Asked questions in class or contributed to class discussions | <input type="radio"/> | <input type="radio"/> | <input type="radio"/> | <input type="radio"/> |
| b. Made a class presentation | <input type="radio"/> | <input type="radio"/> | <input type="radio"/> | <input type="radio"/> |
| c. Prepared two or more drafts of a paper or assignment before turning it in | <input type="radio"/> | <input type="radio"/> | <input type="radio"/> | <input type="radio"/> |
| d. Worked on a paper or project that required integrating ideas or information from various sources | <input type="radio"/> | <input type="radio"/> | <input type="radio"/> | <input type="radio"/> |
| e. Come to class without completing readings or assignments | <input type="radio"/> | <input type="radio"/> | <input type="radio"/> | <input type="radio"/> |
| f. Worked with other students on projects during class | <input type="radio"/> | <input type="radio"/> | <input type="radio"/> | <input type="radio"/> |
| g. Worked with classmates outside of class to prepare class assignments | <input type="radio"/> | <input type="radio"/> | <input type="radio"/> | <input type="radio"/> |
| h. Tutored or taught other students (paid or voluntary) | <input type="radio"/> | <input type="radio"/> | <input type="radio"/> | <input type="radio"/> |
| i. Participated in a community-based project (service-learning activity) as a part of a regular course | <input type="radio"/> | <input type="radio"/> | <input type="radio"/> | <input type="radio"/> |
| j. Used e-mail to communicate with an instructor | <input type="radio"/> | <input type="radio"/> | <input type="radio"/> | <input type="radio"/> |
| k. Discussed grades or assignments with an instructor | <input type="radio"/> | <input type="radio"/> | <input type="radio"/> | <input type="radio"/> |
| l. Talked about career plans with an instructor or advisor | <input type="radio"/> | <input type="radio"/> | <input type="radio"/> | <input type="radio"/> |
| m. Discussed ideas from your readings or classes with instructors outside of class | <input type="radio"/> | <input type="radio"/> | <input type="radio"/> | <input type="radio"/> |
| n. Received prompt feedback (written or oral) from instructors on your performance | <input type="radio"/> | <input type="radio"/> | <input type="radio"/> | <input type="radio"/> |
| o. Worked harder than you thought you could to meet an instructor's standards or expectations | <input type="radio"/> | <input type="radio"/> | <input type="radio"/> | <input type="radio"/> |
| p. Worked with instructors on activities other than coursework | <input type="radio"/> | <input type="radio"/> | <input type="radio"/> | <input type="radio"/> |
| q. Discussed ideas from your readings or classes with others outside of class (students, family members, co-workers, etc.) | <input type="radio"/> | <input type="radio"/> | <input type="radio"/> | <input type="radio"/> |
| r. Had serious conversations with students who differ from you | <input type="radio"/> | <input type="radio"/> | <input type="radio"/> | <input type="radio"/> |
| s. Skipped class | <input type="radio"/> | <input type="radio"/> | <input type="radio"/> | <input type="radio"/> |

5. During the current academic year, how much has your coursework at this college emphasized the following mental activities?
 (Please respond to each item)

| | Very much | Quite a bit | Some | Very little |
|---|-----------------------|-----------------------|-----------------------|-----------------------|
| a. Memorizing facts, ideas, or methods from your courses and readings so you can repeat them in pretty much the same form | <input type="radio"/> | <input type="radio"/> | <input type="radio"/> | <input type="radio"/> |
| b. Analyzing the basic elements of an idea, experience, or theory | <input type="radio"/> | <input type="radio"/> | <input type="radio"/> | <input type="radio"/> |
| c. Forming a new idea or understanding from various pieces of information | <input type="radio"/> | <input type="radio"/> | <input type="radio"/> | <input type="radio"/> |
| d. Making judgments about the value or soundness of information, arguments, or methods | <input type="radio"/> | <input type="radio"/> | <input type="radio"/> | <input type="radio"/> |
| e. Applying theories or concepts to practical problems or in new situations | <input type="radio"/> | <input type="radio"/> | <input type="radio"/> | <input type="radio"/> |
| f. Using information you have read or heard to perform a new skill | <input type="radio"/> | <input type="radio"/> | <input type="radio"/> | <input type="radio"/> |

PLEASE DO NOT MARK IN THIS AREA



6352678

| 6. During the current academic year, how much reading and writing have you done <u>at this college?</u> <i>(Please respond to each item)</i> | None | 1-4 | 5-10 | 11-20 | More than 20 |
|--|-----------------------|-----------------------|-----------------------|-----------------------|-----------------------|
| a. Number of assigned textbooks, manuals, books, or packets of course readings | <input type="radio"/> | <input type="radio"/> | <input type="radio"/> | <input type="radio"/> | <input type="radio"/> |
| b. Number of books read on your own (not assigned) for personal enjoyment or academic enrichment | <input type="radio"/> | <input type="radio"/> | <input type="radio"/> | <input type="radio"/> | <input type="radio"/> |
| c. Number of written papers or reports of any length | <input type="radio"/> | <input type="radio"/> | <input type="radio"/> | <input type="radio"/> | <input type="radio"/> |

7. Mark the response that best represents the extent to which your examinations during the current academic year have challenged you to do your best work at this college.

Extremely challenging ⑦ ⑥ ⑤ ④ ③ ② ① Extremely easy

| 8. Which of the following have you done, or are you currently doing <u>at this college?</u> <i>(Please respond to each item)</i> | Yes | No |
|--|-----------------------|-----------------------|
| a. Internship, field experience, co-op experience, or clinical assignment | <input type="radio"/> | <input type="radio"/> |
| b. An English course taught specifically for students whose first language is not English (ESL, ESOL) | <input type="radio"/> | <input type="radio"/> |
| c. Developmental/remedial reading course (also referred to as Basic Skills, College Prep, etc.) | <input type="radio"/> | <input type="radio"/> |
| d. Developmental/remedial writing course (also referred to as Basic Skills, College Prep, etc.) | <input type="radio"/> | <input type="radio"/> |
| e. Developmental/remedial math course (also referred to as Basic Skills, College Prep, etc.) | <input type="radio"/> | <input type="radio"/> |
| f. Honors course | <input type="radio"/> | <input type="radio"/> |

| 9. How much does <u>this college</u> emphasize the following? <i>(Please respond to each item)</i> | Very much | Quite a bit | Some | Very little |
|---|-----------------------|-----------------------|-----------------------|-----------------------|
| a. Encouraging you to spend significant amounts of time studying | <input type="radio"/> | <input type="radio"/> | <input type="radio"/> | <input type="radio"/> |
| b. Providing the support you need to help you succeed at this college | <input type="radio"/> | <input type="radio"/> | <input type="radio"/> | <input type="radio"/> |
| c. Encouraging contact among students from different economic, social, and racial or ethnic backgrounds | <input type="radio"/> | <input type="radio"/> | <input type="radio"/> | <input type="radio"/> |
| d. Helping you cope with your non-academic responsibilities (work, family, etc.) | <input type="radio"/> | <input type="radio"/> | <input type="radio"/> | <input type="radio"/> |
| e. Providing the support you need to thrive socially | <input type="radio"/> | <input type="radio"/> | <input type="radio"/> | <input type="radio"/> |
| f. Providing the financial support you need to afford your education | <input type="radio"/> | <input type="radio"/> | <input type="radio"/> | <input type="radio"/> |

| 10. About how many hours do you spend in a typical 7-day week doing each of the following? <i>(Please respond to each item)</i> | None | 1-5 | 6-10 | 11-20 | 21-30 | More than 30 |
|--|-----------------------|-----------------------|-----------------------|-----------------------|-----------------------|-----------------------|
| a. Preparing for class (studying, reading, writing, rehearsing, doing homework, etc.) | <input type="radio"/> | <input type="radio"/> | <input type="radio"/> | <input type="radio"/> | <input type="radio"/> | <input type="radio"/> |
| b. Working for pay | <input type="radio"/> | <input type="radio"/> | <input type="radio"/> | <input type="radio"/> | <input type="radio"/> | <input type="radio"/> |
| c. Participating in college-sponsored activities (organizations, campus publications, student government, intramural sports, etc.) | <input type="radio"/> | <input type="radio"/> | <input type="radio"/> | <input type="radio"/> | <input type="radio"/> | <input type="radio"/> |
| d. Providing care for dependents living with you (parents, children, spouse, etc.) | <input type="radio"/> | <input type="radio"/> | <input type="radio"/> | <input type="radio"/> | <input type="radio"/> | <input type="radio"/> |
| e. Commuting to and from classes | <input type="radio"/> | <input type="radio"/> | <input type="radio"/> | <input type="radio"/> | <input type="radio"/> | <input type="radio"/> |

| 11. How much has your experience <u>at this college</u> contributed to your knowledge, skills, and personal development in the following areas? <i>(Please respond to each item)</i> | Very much | Quite a bit | Some | Very little |
|--|-----------------------|-----------------------|-----------------------|-----------------------|
| a. Acquiring job- or work-related knowledge and skills | <input type="radio"/> | <input type="radio"/> | <input type="radio"/> | <input type="radio"/> |
| b. Writing clearly and effectively | <input type="radio"/> | <input type="radio"/> | <input type="radio"/> | <input type="radio"/> |
| c. Speaking clearly and effectively | <input type="radio"/> | <input type="radio"/> | <input type="radio"/> | <input type="radio"/> |
| d. Thinking critically and analytically | <input type="radio"/> | <input type="radio"/> | <input type="radio"/> | <input type="radio"/> |
| e. Solving numerical problems | <input type="radio"/> | <input type="radio"/> | <input type="radio"/> | <input type="radio"/> |
| f. Working effectively with others | <input type="radio"/> | <input type="radio"/> | <input type="radio"/> | <input type="radio"/> |
| g. Learning effectively on your own | <input type="radio"/> | <input type="radio"/> | <input type="radio"/> | <input type="radio"/> |
| h. Developing clearer career goals | <input type="radio"/> | <input type="radio"/> | <input type="radio"/> | <input type="radio"/> |
| i. Gaining information about career opportunities | <input type="radio"/> | <input type="radio"/> | <input type="radio"/> | <input type="radio"/> |

12. This section has three parts. Please answer all three parts, indicating (1) how often you have used the following services during the current academic year, (2) how satisfied you are with the services, and (3) how important the services are to you at this college. (Please respond to each item)

| | (1) Frequency of Use | | | | (2) Satisfaction | | | | (3) Importance | | |
|--|-----------------------|-----------------------|-----------------------|-----------------------|-----------------------|-----------------------|-----------------------|-----------------------|-----------------------|-----------------------|-----------------------|
| | 5 or more times | 2-4 times | 1 time | Never | Very | Some-what | Not at all | N.A. | Very | Some-what | Not at all |
| a. Academic advising/planning | <input type="radio"/> | <input type="radio"/> | <input type="radio"/> | <input type="radio"/> | <input type="radio"/> | <input type="radio"/> | <input type="radio"/> | <input type="radio"/> | <input type="radio"/> | <input type="radio"/> | <input type="radio"/> |
| b. Career counseling | <input type="radio"/> | <input type="radio"/> | <input type="radio"/> | <input type="radio"/> | <input type="radio"/> | <input type="radio"/> | <input type="radio"/> | <input type="radio"/> | <input type="radio"/> | <input type="radio"/> | <input type="radio"/> |
| c. Job placement assistance | <input type="radio"/> | <input type="radio"/> | <input type="radio"/> | <input type="radio"/> | <input type="radio"/> | <input type="radio"/> | <input type="radio"/> | <input type="radio"/> | <input type="radio"/> | <input type="radio"/> | <input type="radio"/> |
| d. Peer or other tutoring | <input type="radio"/> | <input type="radio"/> | <input type="radio"/> | <input type="radio"/> | <input type="radio"/> | <input type="radio"/> | <input type="radio"/> | <input type="radio"/> | <input type="radio"/> | <input type="radio"/> | <input type="radio"/> |
| e. Skill labs (writing, math, etc.) | <input type="radio"/> | <input type="radio"/> | <input type="radio"/> | <input type="radio"/> | <input type="radio"/> | <input type="radio"/> | <input type="radio"/> | <input type="radio"/> | <input type="radio"/> | <input type="radio"/> | <input type="radio"/> |
| f. Child care | <input type="radio"/> | <input type="radio"/> | <input type="radio"/> | <input type="radio"/> | <input type="radio"/> | <input type="radio"/> | <input type="radio"/> | <input type="radio"/> | <input type="radio"/> | <input type="radio"/> | <input type="radio"/> |
| g. Financial aid advising | <input type="radio"/> | <input type="radio"/> | <input type="radio"/> | <input type="radio"/> | <input type="radio"/> | <input type="radio"/> | <input type="radio"/> | <input type="radio"/> | <input type="radio"/> | <input type="radio"/> | <input type="radio"/> |
| h. Computer lab | <input type="radio"/> | <input type="radio"/> | <input type="radio"/> | <input type="radio"/> | <input type="radio"/> | <input type="radio"/> | <input type="radio"/> | <input type="radio"/> | <input type="radio"/> | <input type="radio"/> | <input type="radio"/> |
| i. Student organizations | <input type="radio"/> | <input type="radio"/> | <input type="radio"/> | <input type="radio"/> | <input type="radio"/> | <input type="radio"/> | <input type="radio"/> | <input type="radio"/> | <input type="radio"/> | <input type="radio"/> | <input type="radio"/> |
| j. Transfer advising/planning | <input type="radio"/> | <input type="radio"/> | <input type="radio"/> | <input type="radio"/> | <input type="radio"/> | <input type="radio"/> | <input type="radio"/> | <input type="radio"/> | <input type="radio"/> | <input type="radio"/> | <input type="radio"/> |
| k. Library resources and services | <input type="radio"/> | <input type="radio"/> | <input type="radio"/> | <input type="radio"/> | <input type="radio"/> | <input type="radio"/> | <input type="radio"/> | <input type="radio"/> | <input type="radio"/> | <input type="radio"/> | <input type="radio"/> |
| l. Services for students with disabilities | <input type="radio"/> | <input type="radio"/> | <input type="radio"/> | <input type="radio"/> | <input type="radio"/> | <input type="radio"/> | <input type="radio"/> | <input type="radio"/> | <input type="radio"/> | <input type="radio"/> | <input type="radio"/> |
| m. Services for active military and veterans | <input type="radio"/> | <input type="radio"/> | <input type="radio"/> | <input type="radio"/> | <input type="radio"/> | <input type="radio"/> | <input type="radio"/> | <input type="radio"/> | <input type="radio"/> | <input type="radio"/> | <input type="radio"/> |

13. During the current academic term at this college, I completed registration before the first class session(s).

- Yes; I was registered for all of my courses before the first class session(s)
 Mostly; I was registered for most of my courses before the first class session(s)
 Partly; I was registered for some of my courses before the first class session(s)
 No; I was not registered for any of my courses before the first class session(s)

14. The one response that best describes my experience with orientation when I first came to this college is:

- I took part in an online orientation prior to the beginning of classes
 I attended an on-campus orientation prior to the beginning of classes
 I enrolled in an orientation course as part of my course schedule during my first academic term
 I was not aware of a college orientation
 I was unable to participate in orientation due to scheduling or other issues

15. During my first academic year at this college, I participated in a first-year experience program.

- Yes
 No

16. During my first academic term at this college, I participated in an organized learning community (a formal program in which groups of students take two or more classes together).

- Yes
 No

17. During my first academic term at this college, I participated in a student success course (a course that teaches the skills needed to succeed in college).

- Yes
 No

18. I was told that I should enroll in a developmental/remedial course (also referred to as Basic Skills, College Prep, etc.) in my first academic term at this college, and I...

- Did enroll in more than one of these courses
 Did enroll in one of these courses
 Did not enroll in any of these courses
 Not applicable



19. During the current academic term at this college, my instructors clearly explained a class attendance policy that specified how many classes I could miss without a penalty.

- All of my instructors explained a class attendance policy
- Most of my instructors explained a class attendance policy
- Some of my instructors explained a class attendance policy
- None of my instructors explained a class attendance policy

20. Before the end of my first academic term at this college, an advisor helped me develop an academic plan (a personalized plan with a defined sequence of courses for completing a college certificate or degree and/or for transferring to a 4-year college or university).

- Yes
- No
- I'm still in my first academic term; I have not yet developed an academic plan

21. Someone at this college contacts me if I am struggling with my studies to help me get the assistance I need.

- Yes
- No
- Not applicable

22. During the current academic year at this college, I have participated in supplemental instruction/supplemental learning (extra class sessions with the instructor or an experienced student).

- Never
- Less than 1 time a week
- 1-2 times a week
- 3-4 times a week
- More than 4 times a week

23. How likely is it that the following issues would cause you to withdraw from class or from this college? (Please respond to each item)

| | Very likely | Likely | Somewhat likely | Not likely |
|---|-----------------------|-----------------------|-----------------------|-----------------------|
| a. Working full-time | <input type="radio"/> | <input type="radio"/> | <input type="radio"/> | <input type="radio"/> |
| b. Caring for dependents | <input type="radio"/> | <input type="radio"/> | <input type="radio"/> | <input type="radio"/> |
| c. Academically unprepared | <input type="radio"/> | <input type="radio"/> | <input type="radio"/> | <input type="radio"/> |
| d. Lack of finances | <input type="radio"/> | <input type="radio"/> | <input type="radio"/> | <input type="radio"/> |
| e. Transfer to a 4-year college or university | <input type="radio"/> | <input type="radio"/> | <input type="radio"/> | <input type="radio"/> |

24. How supportive are your friends of your attending this college?

Extremely Quite a bit Somewhat Not very

25. How supportive is your immediate family of your attending this college?

26. Indicate which of the following are your reasons/goals for attending this college. (Please respond to each item)

| | Yes | No |
|---|-----------------------|-----------------------|
| a. Complete a certificate program | <input type="radio"/> | <input type="radio"/> |
| b. Obtain an associate degree | <input type="radio"/> | <input type="radio"/> |
| c. Transfer to a 4-year college or university | <input type="radio"/> | <input type="radio"/> |
| d. Obtain or update job-related skills | <input type="radio"/> | <input type="radio"/> |
| e. Change careers | <input type="radio"/> | <input type="radio"/> |
| f. Self-improvement/personal enjoyment | <input type="radio"/> | <input type="radio"/> |



27. Indicate which of the following are sources you use to pay for your tuition at this college.
(Please respond to each item)

| | Major source | Minor source | Not a source |
|--|-----------------------|-----------------------|-----------------------|
| a. My own income/savings | <input type="radio"/> | <input type="radio"/> | <input type="radio"/> |
| b. Income/savings from family | <input type="radio"/> | <input type="radio"/> | <input type="radio"/> |
| c. Employer contributions | <input type="radio"/> | <input type="radio"/> | <input type="radio"/> |
| d. Active military or veteran benefits | <input type="radio"/> | <input type="radio"/> | <input type="radio"/> |
| e. Grants | <input type="radio"/> | <input type="radio"/> | <input type="radio"/> |
| f. Scholarships | <input type="radio"/> | <input type="radio"/> | <input type="radio"/> |
| g. Student loans (bank, etc.) | <input type="radio"/> | <input type="radio"/> | <input type="radio"/> |
| h. Public assistance | <input type="radio"/> | <input type="radio"/> | <input type="radio"/> |

28. When do you plan to take classes at this college again?
- I will accomplish my goal(s) during this academic term and will not be returning
 - I have no current plan to return
 - Within the next 12 months
 - Uncertain

29. At this college, in what range is your overall college grade point average (GPA)?
- A
 - B
 - C
 - D or lower
 - I do not have a GPA at this college

30. In what range was your overall high school grade point average (GPA)?
- A
 - B
 - C
 - D or lower
 - I do not remember

31. When do you most frequently take classes at this college? (Mark only one)
- Day classes (morning or afternoon)
 - Evening classes
 - Weekend classes

32. During the current academic term, how many classes are you taking...
(Please respond to each item)

| | None | 1 | 2 | 3 | 4 | 5 or more |
|---|-----------------------|-----------------------|-----------------------|-----------------------|-----------------------|-----------------------|
| a. Face-to-face (a class in which all instruction is face-to-face in a classroom) | <input type="radio"/> | <input type="radio"/> | <input type="radio"/> | <input type="radio"/> | <input type="radio"/> | <input type="radio"/> |
| b. Online (a class in which all instruction is online) | <input type="radio"/> | <input type="radio"/> | <input type="radio"/> | <input type="radio"/> | <input type="radio"/> | <input type="radio"/> |
| c. Hybrid (a class that is a mixture of face-to-face and online instruction) | <input type="radio"/> | <input type="radio"/> | <input type="radio"/> | <input type="radio"/> | <input type="radio"/> | <input type="radio"/> |

33. How many total credit hours have you earned at this college, not counting the courses you are currently taking this academic term?
- None
 - 1-14 credits
 - 15-29 credits
 - 30-44 credits
 - 45-60 credits
 - Over 60 credits

34. How many **total academic terms** have you been enrolled **at this college**?

- This is my first academic term
- This is my second academic term
- This is my third or fourth academic term
- This is my fifth or sixth academic term
- I have been enrolled more than six academic terms

35. Would you recommend **this college** to a friend or family member?

- Yes
- No

36. How would you evaluate your overall educational experience **at this college**?

- Excellent
- Good
- Fair
- Poor

37. Do you have children who live with you and depend on you for their care?

- Yes
- No

38. Mark your age group.

- Under 18
- 18–19
- 20–21
- 22–24
- 25–29
- 30–39
- 40–49
- 50–64
- 65+

39. Your gender identity:

- Man
- Woman
- Other
- I prefer not to respond

40. Are you married?

| Yes | No |
|-----------------------|-----------------------|
| <input type="radio"/> | <input type="radio"/> |

41. Is English your native (first) language?

| | |
|-----------------------|-----------------------|
| <input type="radio"/> | <input type="radio"/> |
|-----------------------|-----------------------|

42. Are you a current or former member of the U.S. Armed Forces, Reserves, or National Guard?

| | |
|-----------------------|-----------------------|
| <input type="radio"/> | <input type="radio"/> |
|-----------------------|-----------------------|

43. Are you an international student or non-resident alien?

| | |
|-----------------------|-----------------------|
| <input type="radio"/> | <input type="radio"/> |
|-----------------------|-----------------------|

44. Are you a student-athlete on a team sponsored by **this college's** athletics department?

| | |
|-----------------------|-----------------------|
| <input type="radio"/> | <input type="radio"/> |
|-----------------------|-----------------------|

45. What is your racial or ethnic identification? *(Mark all that apply)*

- American Indian or Alaska Native
- Asian
- Black or African American
- Hispanic or Latino
- Native Hawaiian
- Pacific Islander (non-Native Hawaiian)
- White
- Other
- I prefer not to respond

46. What is the highest academic credential you have earned? (Mark only one)

- None
- GED
- High school diploma
- Vocational/technical certificate
- Associate degree
- Bachelor's degree
- Master's/doctoral/professional degree

47. Who in your family has attended at least some college? (Mark all that apply)

- Mother
- Father
- Brother/Sister
- Child
- Spouse/Partner
- Legal Guardian
- No one

Additional Items
(Please respond to these items if requested)

1. A B C D E

2. A B C D E

3. A B C D E

4. A B C D E

5. A B C D E

6. A B C D E

7. A B C D E

8. A B C D E

9. A B C D E

10. A B C D E

11. A B C D E

12. A B C D E

13. A B C D E

14. A B C D E

15. A B C D E

16. A B C D E

17. A B C D E

18. A B C D E

19. A B C D E

20. A B C D E

Using the list provided, please fill in the bubbles that correspond to the code indicating your program, major, or pathway of study. In the top row, indicate the first number in the program code. In the bottom row, indicate the second number in the program code.

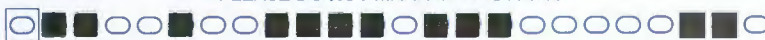
| | | | | | | | | | |
|-------------------------|-------------------------|-------------------------|-------------------------|-------------------------|-------------------------|-------------------------|-------------------------|-------------------------|-------------------------|
| <input type="radio"/> 0 | <input type="radio"/> 1 | <input type="radio"/> 2 | <input type="radio"/> 3 | <input type="radio"/> 4 | <input type="radio"/> 5 | <input type="radio"/> 6 | <input type="radio"/> 7 | <input type="radio"/> 8 | <input type="radio"/> 9 |
| <input type="radio"/> 0 | <input type="radio"/> 1 | <input type="radio"/> 2 | <input type="radio"/> 3 | <input type="radio"/> 4 | <input type="radio"/> 5 | <input type="radio"/> 6 | <input type="radio"/> 7 | <input type="radio"/> 8 | <input type="radio"/> 9 |

Please provide your student identification number by filling in the corresponding bubbles. For example, in the first column, indicate the first number or letter in your student ID number, and so forth. Please do not enter your social security number. (OPTIONAL)

(Please begin here)

| | | | | | | | | | | | | | | | |
|---|---|---|---|---|---|---|---|---|---|---|---|---|---|---|---|
| 1 | 1 | 1 | 1 | 1 | 1 | 1 | 1 | 1 | 1 | 1 | 1 | 1 | 1 | 1 | 1 |
| 2 | 2 | 2 | 2 | 2 | 2 | 2 | 2 | 2 | 2 | 2 | 2 | 2 | 2 | 2 | 2 |
| 3 | 3 | 3 | 3 | 3 | 3 | 3 | 3 | 3 | 3 | 3 | 3 | 3 | 3 | 3 | 3 |
| 4 | 4 | 4 | 4 | 4 | 4 | 4 | 4 | 4 | 4 | 4 | 4 | 4 | 4 | 4 | 4 |
| 5 | 5 | 5 | 5 | 5 | 5 | 5 | 5 | 5 | 5 | 5 | 5 | 5 | 5 | 5 | 5 |
| 6 | 6 | 6 | 6 | 6 | 6 | 6 | 6 | 6 | 6 | 6 | 6 | 6 | 6 | 6 | 6 |
| 7 | 7 | 7 | 7 | 7 | 7 | 7 | 7 | 7 | 7 | 7 | 7 | 7 | 7 | 7 | 7 |
| 8 | 8 | 8 | 8 | 8 | 8 | 8 | 8 | 8 | 8 | 8 | 8 | 8 | 8 | 8 | 8 |
| 9 | 9 | 9 | 9 | 9 | 9 | 9 | 9 | 9 | 9 | 9 | 9 | 9 | 9 | 9 | 9 |
| 0 | 0 | 0 | 0 | 0 | 0 | 0 | 0 | 0 | 0 | 0 | 0 | 0 | 0 | 0 | 0 |
| A | A | A | A | A | A | A | A | A | A | A | A | A | A | A | A |
| B | B | B | B | B | B | B | B | B | B | B | B | B | B | B | B |
| C | C | C | C | C | C | C | C | C | C | C | C | C | C | C | C |
| D | D | D | D | D | D | D | D | D | D | D | D | D | D | D | D |
| E | E | E | E | E | E | E | E | E | E | E | E | E | E | E | E |
| F | F | F | F | F | F | F | F | F | F | F | F | F | F | F | F |
| G | G | G | G | G | G | G | G | G | G | G | G | G | G | G | G |
| H | H | H | H | H | H | H | H | H | H | H | H | H | H | H | H |
| I | I | I | I | I | I | I | I | I | I | I | I | I | I | I | I |
| J | J | J | J | J | J | J | J | J | J | J | J | J | J | J | J |
| K | K | K | K | K | K | K | K | K | K | K | K | K | K | K | K |
| L | L | L | L | L | L | L | L | L | L | L | L | L | L | L | L |
| M | M | M | M | M | M | M | M | M | M | M | M | M | M | M | M |
| N | N | N | N | N | N | N | N | N | N | N | N | N | N | N | N |
| O | O | O | O | O | O | O | O | O | O | O | O | O | O | O | O |
| P | P | P | P | P | P | P | P | P | P | P | P | P | P | P | P |
| Q | Q | Q | Q | Q | Q | Q | Q | Q | Q | Q | Q | Q | Q | Q | Q |
| R | R | R | R | R | R | R | R | R | R | R | R | R | R | R | R |
| S | S | S | S | S | S | S | S | S | S | S | S | S | S | S | S |
| T | T | T | T | T | T | T | T | T | T | T | T | T | T | T | T |
| U | U | U | U | U | U | U | U | U | U | U | U | U | U | U | U |
| V | V | V | V | V | V | V | V | V | V | V | V | V | V | V | V |
| W | W | W | W | W | W | W | W | W | W | W | W | W | W | W | W |
| X | X | X | X | X | X | X | X | X | X | X | X | X | X | X | X |
| Y | Y | Y | Y | Y | Y | Y | Y | Y | Y | Y | Y | Y | Y | Y | Y |
| Z | Z | Z | Z | Z | Z | Z | Z | Z | Z | Z | Z | Z | Z | Z | Z |

Thank you for sharing your views.



CCSSE 2017 Special-Focus Items Academic Advising and Planning

Please mark your responses on page 7 of the survey under 'Additional Items' and not on this sheet.
Mark only one response for each question.

| Question | Responses |
|---|--|
| 1. Since your first academic term <u>at this college</u> , have you met (in person or online) with an academic advisor before registering for classes each term? | A= Yes, before every academic term B= Yes, before some academic terms, but not all C= No |
| 2. Prior to registering for classes before this academic term <u>at this college</u> , were you required to meet (in person or online) with an academic advisor? | A= Yes B= No |
| 3. During this academic term <u>at this college</u> , how many times have you met (in person or online) with an academic advisor? | A= None B= Once C= Twice D= More than twice |
| 4. During this academic term <u>at this college</u> , if you have met (in person or online) with an academic advisor more than once, did you meet with the same academic advisor each time? | A= Yes B= No C= I have only met with an academic advisor once this academic term <u>at this college</u> D= I have not met with an academic advisor during this academic term <u>at this college</u> |
| 5. During your most recent meeting (in person or online) with an academic advisor during this academic term <u>at this college</u> , he or she discussed when your next advising session should be. | A= Yes B= No C= I have not met with an academic advisor during this academic term <u>at this college</u> |
| 6. I review progress toward my academic goals <u>at this college</u> each time I meet (in person or online) with an academic advisor. | A= Strongly agree B= Agree C= Disagree D= Strongly disagree E= I have not met with an academic advisor <u>at this college</u> . |
| 7. The first time I met with an academic advisor <u>at this college</u> was... | A= In person, one-on-one B= In person, in a group setting C= Online D= I have not met (in person or online) with an academic advisor <u>at this college</u> |
| 8. How long did your first academic advising session <u>at this college</u> last? | A= 15 minutes or less B= 16 to 30 minutes C= More than 30 minutes D= I do not remember E= I have not met (in person or online) with an academic advisor <u>at this college</u> |
| 9. If you were told you needed to take a developmental education class <u>at this college</u> , did an academic advisor clearly explain why? | A= Yes B= No C= I was not told I needed to take developmental education classes <u>at this college</u> D= I have not met (in person or online) with an academic advisor <u>at this college</u> |

Do not mark on this sheet (20 questions in total)

CCSSE 2017 Special-Focus Items Academic Advising and Planning

**Please mark your responses on page 7 of the survey under 'Additional Items' and not on this sheet.
Mark only one response for each question.**

| Question | Responses |
|---|--|
| 10. Has an academic advisor <u>at this college</u> helped you select a program, major, or pathway of study? | A= Yes, prior to starting classes my first academic term <u>at this college</u> B= Yes, but after classes began my first academic term <u>at this college</u> C= No D= I have not met (in person or online) with an academic advisor <u>at this college</u> |
| 11. Prior to meeting (in person or online) with an academic advisor <u>at this college</u> , I knew what I wanted my major to be. | A= Strongly agree B= Agree C= Disagree D= Strongly disagree E= I have not met with an academic advisor <u>at this college</u> |
| 12. After first meeting (in person or online) with an academic advisor <u>at this college</u> , my understanding of how long it would take to complete my academic goals... | A= Changed to a shorter amount of time B= Changed to a longer amount of time C= Did not change D= I do not remember E= I have not met with an academic advisor <u>at this college</u> |
| 13. An academic advisor <u>at this college</u> has clearly explained to me which classes I need to take in order to reach my academic goals. | A= Strongly agree B= Agree C= Disagree D= Strongly disagree E= I have not met (in person or online) with an academic advisor <u>at this college</u> |
| 14. <u>At this college</u> , an academic advisor has provided me with information about academic support services (tutoring services, writing center, math skill lab, etc.). | A= Strongly agree B= Agree C= Disagree D= Strongly disagree E= I have not met (in person or online) with an academic advisor <u>at this college</u> |
| 15. An academic advisor <u>at this college</u> has talked with me about my commitments outside of school (work, children, dependents, etc.) to help me figure out how many courses to take. | A= Strongly agree B= Agree C= Disagree D= Strongly disagree E= I have not met (in person or online) with an academic advisor <u>at this college</u> |
| 16. <u>At this college</u> , an academic advisor has discussed my career interests with me. | A= Strongly agree B= Agree C= Disagree D= Strongly disagree |

**CCSSE 2017 Special-Focus Items
Academic Advising and Planning**

Please mark your responses on page 7 of the survey under 'Additional Items' and not on this sheet.
Mark only one response for each question.

| Question | Responses |
|---|--|
| 17. <u>At this college</u> , an academic advisor has discussed with me regional employment opportunities based on my career interests. | A= Strongly agree B= Agree C= Disagree D= Strongly disagree E= I have not discussed employment opportunities with an academic advisor <u>at this college</u> |
| 18. <u>At this college</u> , what has been your <u>main</u> source of academic advising (help with academic goal-setting, planning, course recommendations, graduation requirements, etc.)? <i>Mark only one.</i> | A= Instructors B= Academic advisors (not instructors) C= Friends, family, or other students D= College website E= Other college materials |
| 19. Has an academic advisor come to one of your classes <u>at this college</u> to speak with you about your academic goals and planning? | A= Yes B= No C= I do not know |
| 20. Have any of your instructors <u>at this college</u> recommended that you meet (in person or online) with an academic advisor? | A= Yes B= No |

Appendix B

CCSSE Participating Colleges by Comparison Group Size

| Institution | City | State |
|--|------------------|-------|
| Small | | |
| Alexandria Technical & Community College | Alexandria | MN |
| Anoka Technical College | Anoka | MN |
| Atlanta Metropolitan State College | Atlanta | GA |
| Bainbridge State College | Bainbridge | GA |
| Barstow Community College | Barstow | CA |
| Bevill State Community College | Jasper | AL |
| Bismarck State College | Bismarck | ND |
| BridgeValley Community and Technical College | South Charleston | WV |
| Carl Sandburg College | Galesburg | IL |
| Carolinas College of Health Sciences | Charlotte | NC |
| Cascadia College | Bothell | WA |
| Casper College | Casper | WY |
| Central Virginia Community College | Lynchburg | VA |
| Central Wyoming College | Riverton | WY |
| Chipola College | Marianna | FL |
| Clarendon College | Clarendon | TX |
| Cleveland Community College | Shelby | NC |
| Cleveland State Community College | Cleveland | TN |
| Clovis Community College | Clovis | NM |
| Coastal Bend College | Beeville | TX |
| Cochise College | Sierra Vista | AZ |
| College of Menominee Nation | Keshena | WI |
| College of the Mainland | Texas City | TX |
| Columbia Gorge Community College | The Dalles | OR |
| Craven Community College | New Bern | NC |
| Dabney S. Lancaster Community College | Clifton Forge | VA |
| Danville Area Community College | Danville | IL |
| Danville Community College | Danville | VA |
| Davidson County Community College | Thomasville | NC |
| Dodge City Community College | Dodge City | KS |
| Dyersburg State Community College | Dyersburg | TN |
| East Central College | Union | MO |
| East Central Community College | Decatur | MS |
| East Georgia State College | Swainsboro | GA |

| Institution | City | State |
|---|---------------|--------------|
| Eastern Gateway Community College | Steubenville | OH |
| Eastern Wyoming College | Torrington | WY |
| Ellsworth Community College | Iowa Falls | IA |
| Fond du Lac Tribal and Community College | Cloquet | MN |
| Frank Phillips College | Borger | TX |
| Garden City Community College | Garden City | KS |
| Gogebic Community College | Ironwood | MI |
| Grays Harbor College | Aberdeen | WA |
| Great Bay Community College | Portsmouth | NH |
| Harrisburg Area Community College - Gettysburg Campus | Harrisburg | PA |
| Harrisburg Area Community College - Lancaster Campus | Harrisburg | PA |
| Harrisburg Area Community College - Lebanon Campus | Harrisburg | PA |
| Harrisburg Area Community College - York Campus | Harrisburg | PA |
| Hibbing Community College | Hibbing | MN |
| Hopkinsville Community College | Hopkinsville | KY |
| Independence Community College | Independence | KS |
| Itasca Community College | Grand Rapids | MN |
| James Sprunt Community College | Kenansville | NC |
| Kankakee Community College | Kankakee | IL |
| Kaskaskia College | Centralia | IL |
| Klamath Community College | Klamath Falls | OR |
| Lac Courte Oreilles Ojibwa Community College | Hayward | WI |
| Lakes Region Community College | Laconia | NH |
| Lamar State College - Orange | Orange | TX |
| Laramie County Community College | Cheyenne | WY |
| M State Detroit Lakes Campus | Fergus Falls | MN |
| M State Fergus Falls Campus | Fergus Falls | MN |
| M State Moorhead Campus | Fergus Falls | MN |
| M State Wadena Campus | Fergus Falls | MN |
| Madisonville Community College | Madisonville | KY |
| Manchester Community College | Manchester | NH |
| Marion Military Institute | Marion | AL |
| Marshalltown Community College | Marshalltown | IA |
| Maysville Community & Technical College | Maysville | KY |

| Institution | City | State |
|---|---------------------|--------------|
| Meridian Community College | Meridian | MS |
| Mesabi Range College | Virginia | MN |
| Mid-Plains Community College | North Platte | NE |
| Mid-State Technical College | Wisconsin Rapids | WI |
| Miles Community College | Miles City | MT |
| Minnesota West - Canby | Worthington | MN |
| Minnesota West - Granite Falls | Worthington | MN |
| Minnesota West - Jackson | Worthington | MN |
| Minnesota West - Pipestone | Worthington | MN |
| Minnesota West - Worthington | Worthington | MN |
| Missouri State University-West Plains | West Plains | MO |
| Mohave Community College | Kingman | AZ |
| Nashua Community College | Nashua | NH |
| New Mexico State University Alamogordo | Alamogordo | NM |
| North Central Missouri College | Trenton | MO |
| North Central State College | Mansfield | OH |
| North Florida Community College | Madison | FL |
| North Iowa Area Community College | Mason City | IA |
| Northeast Lakeview College | Universal City | TX |
| Northeastern Technical College | Cheraw | SC |
| Northern Wyoming Community College District | Sheridan | WY |
| Northwest College | Powell | WY |
| Northwest Iowa Community College | Sheldon | IA |
| Northwest Kansas Technical College | Goodland | KS |
| Owensboro Community and Technical College | Owensboro | KY |
| Palo Verde College | Blythe | CA |
| Pine Technical and Community College | Pine City | MN |
| Porterville College | Porterville | CA |
| Rainy River Community College | International Falls | MN |
| Reading Area Community College | Reading | PA |
| Redlands Community College | El Reno | OK |
| Rend Lake College | Ina | IL |
| River Parishes Community College | Gonzales | LA |
| Riverland Community College | Austin | MN |
| Roanoke-Chowan Community College | Ahoskie | NC |
| Savannah Technical College | Savannah | GA |
| South Arkansas Community College | El Dorado | AR |

| Institution | City | State |
|---|-----------------|--------------|
| South Central College | North Mankato | MN |
| South Georgia State College | Douglas | GA |
| South Mountain Community College | Phoenix | AZ |
| South Piedmont Community College | Monroe | NC |
| Southeastern Community College | West Burlington | IA |
| Southwestern Community College | Creston | IA |
| Southwestern Indian Polytechnic Institute | Albuquerque | NM |
| Stanly Community College | Albemarle | NC |
| Texarkana College | Texarkana | TX |
| Tillamook Bay Community College | Tillamook | OR |
| Trenholm State Community College | Montgomery | AL |
| University of Arkansas Community College at Batesville | Batesville | AR |
| University of Pittsburgh at Titusville Campus | Titusville | PA |
| Vermilion Community College | Ely | MN |
| Vernon College | Vernon | TX |
| Victoria College | Victoria | TX |
| Virginia Highlands Community College | Abingdon | VA |
| Washington State Community College | Marietta | OH |
| West Virginia Northern Community College | Wheeling | WV |
| Western Nebraska Community College | Scottsbluff | NE |
| Western Piedmont Community College | Morganton | NC |
| Western Technical College | La Crosse | WI |
| Western Wyoming Community College | Rock Springs | WY |
| Whatcom Community College | Bellingham | WA |
| White Mountains Community College | Berlin | NH |
| Wichita Area Technical College | Wichita | KS |
| Williamsburg Technical College | Kingstree | SC |
| Williston State College | Williston | ND |
| Wisconsin Indianhead Technical College | Shell Lake | WI |
| Zane State College | Zanesville | OH |
| Medium | | |
| Alvin Community College | Alvin | TX |
| Angelina College | Lufkin | TX |
| Berkeley City College | Berkeley | CA |
| Big Sandy Community and Technical College | Prestonsburg | KY |
| Bossier Parish Community College | Bossier City | LA |

| Institution | City | State |
|---|---------------------|--------------|
| Central Arizona College | Coolidge | AZ |
| Central Community College | Grand Island | NE |
| Central Oregon Community College | Bend | OR |
| Cerro Coso Community College | Ridgecrest | CA |
| Clark State Community College | Springfield | OH |
| College of Alameda | Alameda | CA |
| College of Central Florida | Ocala | FL |
| College of Southern Idaho | Twin Falls | ID |
| Columbia Basin College | Pasco | WA |
| Columbia State Community College | Columbia | TN |
| Community College of Vermont | Montpelier | VT |
| Crafton Hills College | Yuciapa | CA |
| Elizabethtown Community & Technical College | Elizabethtown | KY |
| Florence-Darlington Technical College | Florence | SC |
| Gateway Community and Technical College | Florence | KY |
| GateWay Community College | Phoenix | AZ |
| Georgia Highlands College | Rome | GA |
| Georgia Military College | Milledgeville | GA |
| Harford Community College | Bel Air | MD |
| Hawkeye Community College | Waterloo | IA |
| Heartland Community College | Normal | IL |
| Holyoke Community College | Holyoke | MA |
| Horry-Georgetown Technical College | Conway | SC |
| Inver Hills Community College | Inver Grove Heights | MN |
| Iowa Central Community College | Fort Dodge | IA |
| Iowa Western Community College | Council Bluffs | IA |
| Jackson College | Jackson | MI |
| Jackson State Community College | Jackson | TN |
| Lake Superior College | Duluth | MN |
| Lakeland Community College | Kirtland | OH |
| Lehigh Carbon Community College | Schnecksville | PA |
| Linn-Benton Community College | Albany | OR |
| Massachusetts Bay Community College | Wellesley Hills | MA |
| McHenry County College | Crystal Lake | IL |
| Merritt College | Oakland | CA |
| Motlow State Community College | Tullahoma | TN |
| Muskegon Community College | Muskegon | MI |

| Institution | City | State |
|---|---------------|--------------|
| North Hennepin Community College | Brooklyn Park | MN |
| North Idaho College | Coeur d'Alene | ID |
| North Shore Community College | Danvers | MA |
| Northeast Community College | Norfolk | NE |
| Northeast Iowa Community College | Calmar | IA |
| Northeast State Community College | Blountville | TN |
| Northern Oklahoma College | Tonkawa | OK |
| Okanagan College | Kelowna | BC |
| Piedmont Technical College | Greenwood | SC |
| Pueblo Community College | Pueblo | CO |
| Quincy College | Quincy | MA |
| Roane State Community College | Harriman | TN |
| Rochester Community and Technical College | Rochester | MN |
| Rogue Community College | Grants Pass | OR |
| Rowan College at Gloucester County | Sewell | NJ |
| Rowan-Cabarrus Community College | Salisbury | NC |
| Saint Paul College | Saint Paul | MN |
| Shelton State Community College | Tuscaloosa | AL |
| Shoreline Community College | Shoreline | WA |
| Skagit Valley College | Mount Vernon | WA |
| South Louisiana Community College | Lafayette | LA |
| South Puget Sound Community College | Olympia | WA |
| Spokane Falls Community College | Spokane | WA |
| Springfield Technical Community College | Springfield | MA |
| St. Cloud Technical and Community College | St. Cloud | MN |
| Tacoma Community College | Tacoma | WA |
| Temple College | Temple | TX |
| Trinity Valley Community College | Athens | TX |
| University of Cincinnati Blue Ash College | Blue Ash | OH |
| Walters State Community College | Morristown | TN |
| Western Iowa Tech Community College | Sioux City | IA |
| Wharton County Junior College | Wharton | TX |
| Large | | |
| Amarillo College | Amarillo | TX |
| Anoka-Ramsey Community College | Coon Rapids | MN |
| Arapahoe Community College | Littleton | CO |
| Bellevue College | Bellevue | WA |

| Institution | City | State |
|---|-------------------|--------------|
| Bristol Community College | Fall River | MA |
| Bucks County Community College | Newtown | PA |
| Butler Community College | El Dorado | KS |
| Butte College | Oroville | CA |
| Century College | White Bear Lake | MN |
| Chandler-Gilbert Community College | Chandler | AZ |
| Chattanooga State Community College | Chattanooga | TN |
| Daytona State College | Daytona Beach | FL |
| Del Mar College | Corpus Christi | TX |
| Delta College | University Center | MI |
| Eastern Iowa Community Colleges | Davenport | IA |
| El Centro College | Dallas | TX |
| Elgin Community College | Elgin | IL |
| Estrella Mountain Community College | Avondale | AZ |
| Forsyth Technical Community College | Winston-Salem | NC |
| Grand Rapids Community College | Grand Rapids | MI |
| Greenville Technical College | Greenville | SC |
| Guilford Technical Community College | Jamestown | NC |
| Harrisburg Area Community College - Harrisburg Campus | Harrisburg | PA |
| Illinois Central College | East Peoria | IL |
| Jefferson Community and Technical College | Louisville | KY |
| Joliet Junior College | Joliet | IL |
| Kalamazoo Valley Community College | Kalamazoo | MI |
| Kirkwood Community College | Cedar Rapids | IA |
| Lane Community College | Eugene | OR |
| Laney College | Oakland | CA |
| Lansing Community College | Lansing | MI |
| Lorain County Community College | Elyria | OH |
| Metropolitan Community College | Omaha | NE |
| Midlands Technical College | Columbia | SC |
| Minneapolis Community and Technical College | Minneapolis | MN |
| Montgomery County Community College | Blue Bell | PA |
| Mott Community College | Flint | MI |
| Nashville State Community College | Nashville | TN |
| Navarro College | Corsicana | TX |
| Norco College | Norco | CA |

| Institution | City | State |
|---------------------------------------|-----------------|--------------|
| Northampton Community College | Bethlehem | PA |
| Ozarks Technical Community College | Springfield | MO |
| Palo Alto College | San Antonio | TX |
| Paradise Valley Community College | Phoenix | AZ |
| Pasco-Hernando State College | New Port Richey | FL |
| Passaic County Community College | Paterson | NJ |
| Pellissippi State Community College | Knoxville | TN |
| Phoenix College | Phoenix | AZ |
| Raritan Valley Community College | Branchburg | NJ |
| Rowan College at Burlington County | Mt. Laurel | NJ |
| San Jacinto College - Central Campus | Pasadena | TX |
| San Jacinto College - North Campus | Pasadena | TX |
| San Jacinto College - South Campus | Pasadena | TX |
| Scottsdale Community College | Scottsdale | AZ |
| Southeast Community College | Lincoln | NE |
| Southwest Tennessee Community College | Memphis | TN |
| Spokane Community College | Spokane | WA |
| St. Philip's College | San Antonio | TX |
| Stark State College | North Canton | OH |
| Thomas Nelson Community College | Hampton | VA |
| Truckee Meadows Community College | Reno | NV |
| University of Wisconsin Colleges | Madison | WI |
| Volunteer State Community College | Gallatin | TN |
| Extra-Large | | |
| Bakersfield College | Bakersfield | CA |
| Broward College | Ft. Lauderdale | FL |
| City College of San Francisco | San Francisco | CA |
| College of DuPage | Glen Ellyn | IL |
| College of Southern Nevada | Las Vegas | NV |
| Columbus State Community College | Columbus | OH |
| El Paso Community College | El Paso | TX |
| Florida SouthWestern State College | Fort Myers | FL |
| Fresno City College | Fresno | CA |
| Glendale Community College | Glendale | AZ |
| Houston Community College | Houston | TX |
| Indian River State College | Fort Pierce | FL |
| Mesa Community College | Mesa | AZ |

| Institution | City | State |
|-------------------------------------|--------------|--------------|
| Metropolitan Community College | Kansas City | MO |
| Milwaukee Area Technical College | Milwaukee | WI |
| Modesto Junior College | Modesto | CA |
| Moraine Valley Community College | Palos Hills | IL |
| Northern Virginia Community College | Annandale | VA |
| Northwest Vista College | San Antonio | TX |
| San Antonio College | San Antonio | TX |
| Santa Monica College | Santa Monica | CA |
| Seminole State College of Florida | Sanford | FL |
| St. Petersburg College | Clearwater | FL |
| Tulsa Community College | Tulsa | OK |
| Valencia College | Orlando | FL |

Appendix C

Appendix C
2017 CCSSE Survey Results by Campus

| 1. Did you begin college at WITC or elsewhere? | Started Here | Started Elsewhere |
|--|--------------|-------------------|
| WITC | 68% | 32% |
| Ashland | 79% | 21% |
| New Richmond | 66% | 34% |
| Rice Lake | 71% | 29% |
| Superior | 67% | 33% |

| 2. Thinking about this current academic term, how would you characterize your enrollment at this college? | Full-time | Less than Full-time |
|---|-----------|---------------------|
| WITC | 81% | 19% |
| Ashland | 88% | 12% |
| New Richmond | 80% | 20% |
| Rice Lake | 75% | 25% |
| Superior | 84% | 16% |

| 3.* Have you taken this survey in another class this term? | Yes | No |
|--|-----|------|
| WITC | <1% | 100% |
| Ashland | 0% | 100% |
| New Richmond | 0% | 100% |
| Rice Lake | 0% | 100% |
| Superior | <1% | 100% |

*All other questions have duplicate responses removed.

| 4. In your experiences at WITC during the current academic year, about how often have you done each of the following? | Very Often | Often | Some-times | Never |
|---|------------|-------|------------|-------|
| <i>a. Asked questions in class or contributed to class discussions</i> | | | | |
| WITC | 47% | 34% | 18% | 1% |
| Ashland | 57% | 31% | 12% | 0% |
| New Richmond | 44% | 39% | 16% | 1% |
| Rice Lake | 47% | 30% | 22% | 1% |
| Superior | 48% | 33% | 18% | <1% |
| <i>b. Made a class presentation</i> | | | | |
| WITC | 19% | 32% | 41% | 7% |
| Ashland | 19% | 31% | 33% | 17% |
| New Richmond | 21% | 38% | 37% | 4% |
| Rice Lake | 24% | 28% | 39% | 9% |
| Superior | 13% | 31% | 50% | 6% |

| 4. | In your experiences at WITC during the current academic year, about how often have you done each of the following? | Very Often | Often | Sometimes | Never |
|--|--|------------|-------|-----------|-------|
| <i>c. Prepared two or more drafts of a paper or assignment before turning it in</i> | | | | | |
| WITC | | 17% | 30% | 37% | 16% |
| Ashland | | 12% | 38% | 29% | 21% |
| New Richmond | | 13% | 23% | 46% | 17% |
| Rice Lake | | 22% | 36% | 29% | 14% |
| Superior | | 17% | 29% | 37% | 17% |
| <i>d. Worked on a paper or project that required integrating ideas or information from various sources</i> | | | | | |
| WITC | | 33% | 39% | 26% | 3% |
| Ashland | | 43% | 36% | 17% | 5% |
| New Richmond | | 28% | 39% | 31% | 2% |
| Rice Lake | | 39% | 41% | 17% | 3% |
| Superior | | 30% | 37% | 30% | 3% |
| <i>e. Come to class without completing readings or assignments</i> | | | | | |
| WITC | | 3% | 8% | 50% | 40% |
| Ashland | | 2% | 12% | 50% | 36% |
| New Richmond | | 3% | 9% | 49% | 39% |
| Rice Lake | | 3% | 6% | 55% | 36% |
| Superior | | 2% | 8% | 46% | 44% |
| <i>f. Worked with other students on projects during class</i> | | | | | |
| WITC | | 33% | 38% | 25% | 4% |
| Ashland | | 49% | 39% | 12% | 0% |
| New Richmond | | 36% | 38% | 23% | 3% |
| Rice Lake | | 25% | 38% | 32% | 5% |
| Superior | | 33% | 38% | 24% | 5% |
| <i>g. Worked with classmates outside of class to prepare class assignments</i> | | | | | |
| WITC | | 13% | 20% | 42% | 25% |
| Ashland | | 17% | 26% | 33% | 24% |
| New Richmond | | 14% | 21% | 42% | 24% |
| Rice Lake | | 14% | 23% | 44% | 19% |
| Superior | | 11% | 14% | 43% | 31% |
| <i>h. Tutored or taught other students (paid or voluntary)</i> | | | | | |
| WITC | | 3% | 6% | 24% | 68% |
| Ashland | | 7% | 7% | 43% | 43% |
| New Richmond | | 4% | 7% | 23% | 66% |
| Rice Lake | | 2% | 5% | 15% | 78% |
| Superior | | 2% | 4% | 28% | 66% |
| <i>i. Participated in a community-based project as a part of a regular course</i> | | | | | |
| WITC | | 3% | 7% | 23% | 67% |
| Ashland | | 5% | 14% | 36% | 45% |
| New Richmond | | 3% | 2% | 22% | 73% |
| Rice Lake | | 3% | 7% | 22% | 67% |
| Superior | | 3% | 11% | 22% | 64% |

| 4. | In your experiences at WITC during the current academic year, about how often have you done each of the following? | Very Often | Often | Sometimes | Never |
|--|--|------------|-------|-----------|-------|
| <i>j. Used e-mail to communicate with an instructor</i> | | | | | |
| WITC | | 41% | 32% | 22% | 6% |
| | Ashland | 41% | 20% | 24% | 15% |
| | New Richmond | 40% | 36% | 22% | 3% |
| | Rice Lake | 49% | 25% | 19% | 7% |
| | Superior | 36% | 36% | 23% | 5% |
| <i>k. Discussed grades or assignments with an instructor</i> | | | | | |
| WITC | | 25% | 38% | 33% | 4% |
| | Ashland | 24% | 50% | 24% | 2% |
| | New Richmond | 23% | 36% | 37% | 4% |
| | Rice Lake | 30% | 37% | 29% | 4% |
| | Superior | 22% | 39% | 34% | 5% |
| <i>l. Talked about career plans with an instructor or advisor</i> | | | | | |
| WITC | | 18% | 29% | 40% | 14% |
| | Ashland | 17% | 43% | 36% | 5% |
| | New Richmond | 14% | 29% | 40% | 17% |
| | Rice Lake | 17% | 24% | 45% | 14% |
| | Superior | 22% | 29% | 37% | 11% |
| <i>m. Discussed ideas from your readings or classes with instructors outside of class</i> | | | | | |
| WITC | | 6% | 14% | 45% | 35% |
| | Ashland | 14% | 19% | 29% | 38% |
| | New Richmond | 4% | 12% | 46% | 38% |
| | Rice Lake | 7% | 9% | 53% | 31% |
| | Superior | 5% | 19% | 40% | 36% |
| <i>n. Received prompt feedback (written or oral) from instructors on your performance</i> | | | | | |
| WITC | | 33% | 43% | 22% | 2% |
| | Ashland | 36% | 36% | 26% | 2% |
| | New Richmond | 28% | 48% | 21% | 3% |
| | Rice Lake | 41% | 34% | 23% | 2% |
| | Superior | 29% | 48% | 21% | 2% |
| <i>o. Worked harder than you thought you could to meet an instructor's standards or expectations</i> | | | | | |
| WITC | | 23% | 37% | 34% | 6% |
| | Ashland | 38% | 36% | 19% | 7% |
| | New Richmond | 19% | 32% | 42% | 6% |
| | Rice Lake | 24% | 37% | 31% | 8% |
| | Superior | 21% | 43% | 31% | 5% |
| <i>p. Worked with instructors on activities other than coursework</i> | | | | | |
| WITC | | 6% | 12% | 36% | 47% |
| | Ashland | 12% | 19% | 48% | 21% |
| | New Richmond | 4% | 10% | 42% | 45% |
| | Rice Lake | 6% | 6% | 29% | 58% |
| | Superior | 5% | 16% | 34% | 44% |

| 4. | In your experiences at WITC during the current academic year, about how often have you done each of the following? | Very Often | Often | Sometimes | Never |
|---|--|------------|-------|-----------|-------|
| <i>q. Discussed ideas from your readings or classes with others outside of class (students, family members, co-workers, etc.)</i> | | | | | |
| WITC | | 21% | 34% | 36% | 9% |
| | Ashland | 29% | 40% | 29% | 2% |
| | New Richmond | 16% | 32% | 44% | 8% |
| | Rice Lake | 24% | 34% | 32% | 10% |
| | Superior | 23% | 35% | 33% | 9% |
| <i>r. Had serious conversations with students who differ from you</i> | | | | | |
| WITC | | 10% | 24% | 43% | 22% |
| | Ashland | 12% | 43% | 36% | 10% |
| | New Richmond | 9% | 21% | 40% | 29% |
| | Rice Lake | 9% | 19% | 47% | 25% |
| | Superior | 12% | 27% | 44% | 16% |
| <i>s. Skipped class</i> | | | | | |
| WITC | | <1% | 2% | 39% | 58% |
| | Ashland | 0% | 5% | 31% | 64% |
| | New Richmond | 1% | 2% | 45% | 52% |
| | Rice Lake | 0% | 2% | 39% | 59% |
| | Superior | 1% | 2% | 36% | 61% |

| 5. | During the current academic year, how much has your coursework at WITC emphasized the following mental activities? | Very Much | Quite A Bit | Some | Very Little |
|--|--|-----------|-------------|------|-------------|
| <i>a. Memorizing facts, ideas, or methods from your courses and readings so you can repeat them in pretty much the same form</i> | | | | | |
| WITC | | 30% | 36% | 28% | 7% |
| | Ashland | 38% | 36% | 21% | 5% |
| | New Richmond | 27% | 32% | 32% | 9% |
| | Rice Lake | 30% | 40% | 25% | 4% |
| | Superior | 30% | 36% | 27% | 7% |
| <i>b. Analyzing the basic elements of an idea, experience, or theory</i> | | | | | |
| WITC | | 33% | 41% | 22% | 4% |
| | Ashland | 29% | 60% | 7% | 5% |
| | New Richmond | 28% | 44% | 25% | 3% |
| | Rice Lake | 33% | 33% | 28% | 5% |
| | Superior | 40% | 40% | 18% | 2% |
| <i>c. Forming a new idea or understanding from various pieces of information</i> | | | | | |
| WITC | | 29% | 45% | 23% | 2% |
| | Ashland | 33% | 48% | 20% | 0% |
| | New Richmond | 21% | 47% | 28% | 3% |
| | Rice Lake | 32% | 43% | 22% | 2% |
| | Superior | 33% | 45% | 20% | 1% |

| 5. | During the current academic year, how much has your coursework at WITC emphasized the following mental activities? | Very Much | Quite A Bit | Some | Very Little |
|---|--|-----------|-------------|------|-------------|
| <i>d. Making judgments about the value or soundness of information, arguments, or methods</i> | | | | | |
| WITC | | 20% | 38% | 32% | 9% |
| Ashland | | 19% | 48% | 29% | 5% |
| New Richmond | | 14% | 39% | 39% | 9% |
| Rice Lake | | 22% | 37% | 29% | 11% |
| Superior | | 24% | 38% | 29% | 9% |
| <i>e. Applying theories or concepts to practical problems or in new situations</i> | | | | | |
| WITC | | 38% | 37% | 21% | 4% |
| Ashland | | 52% | 36% | 7% | 5% |
| New Richmond | | 29% | 45% | 23% | 3% |
| Rice Lake | | 37% | 33% | 25% | 5% |
| Superior | | 43% | 34% | 19% | 3% |
| <i>f. Using information you have read or heard to perform a new skill</i> | | | | | |
| WITC | | 46% | 33% | 18% | 3% |
| Ashland | | 76% | 19% | 5% | 0% |
| New Richmond | | 38% | 36% | 22% | 4% |
| Rice Lake | | 44% | 29% | 23% | 3% |
| Superior | | 51% | 36% | 12% | <1% |

| 6. | During the current academic year, how much reading and writing have you done at WITC? | None | 1 to 4 | 5 to 10 | 11 to 20 | More than 20 |
|---|---|------|--------|---------|----------|--------------|
| <i>a. Number of assigned textbooks, manuals, books, or packets of course readings</i> | | | | | | |
| WITC | | 1% | 18% | 34% | 19% | 29% |
| Ashland | | 2% | 14% | 40% | 17% | 26% |
| New Richmond | | 1% | 17% | 34% | 14% | 34% |
| Rice Lake | | 1% | 17% | 36% | 21% | 25% |
| Superior | | 0% | 19% | 30% | 22% | 29% |
| <i>b. Number of books read on your own (not assigned) for personal enjoyment or academic enrichment</i> | | | | | | |
| WITC | | 44% | 39% | 10% | 3% | 4% |
| Ashland | | 31% | 48% | 17% | 5% | 0% |
| New Richmond | | 53% | 32% | 7% | 4% | 3% |
| Rice Lake | | 41% | 42% | 10% | 2% | 4% |
| Superior | | 40% | 43% | 10% | 2% | 4% |
| <i>c. Number of written papers or reports of any length</i> | | | | | | |
| WITC | | 5% | 31% | 33% | 19% | 12% |
| Ashland | | 5% | 19% | 26% | 21% | 29% |
| New Richmond | | 7% | 39% | 26% | 17% | 10% |
| Rice Lake | | 2% | 22% | 39% | 21% | 16% |
| Superior | | 4% | 33% | 36% | 20% | 8% |

| 7. Mark the box that best represents the extent to which your examinations during the current academic year have challenged you to do your best work at WITC. | Extremely Challenging ← → Extremely Easy | | | | | | |
|---|--|-----|-----|-----|----|----|----|
| | 7 | 6 | 5 | 4 | 3 | 2 | 1 |
| WITC | 10% | 24% | 36% | 23% | 4% | 2% | 1% |
| Ashland | 7% | 41% | 37% | 12% | 2% | 0% | 0% |
| New Richmond | 12% | 21% | 36% | 26% | 3% | 3% | 1% |
| Rice Lake | 10% | 26% | 36% | 21% | 4% | 2% | 1% |
| Superior | 11% | 23% | 36% | 23% | 5% | 2% | 1% |

| 8. Which of the following have you done, or are you currently doing at WITC? | Yes | No |
|--|-----|------|
| <i>a. Internship, field experience, co-op experience, or clinical assignment</i> | | |
| WITC | 42% | 58% |
| Ashland | 60% | 40% |
| New Richmond | 39% | 61% |
| Rice Lake | 39% | 61% |
| Superior | 44% | 56% |
| <i>b. An English course taught specifically for students whose first language is not English (ESL, ESOL)</i> | | |
| WITC | 4% | 96% |
| Ashland | 0% | 100% |
| New Richmond | 3% | 97% |
| Rice Lake | 6% | 94% |
| Superior | 5% | 96% |
| <i>c. Developmental/remedial reading course (also referred to as Basic Skills, College Prep, etc.)</i> | | |
| WITC | 16% | 84% |
| Ashland | 10% | 90% |
| New Richmond | 11% | 89% |
| Rice Lake | 14% | 86% |
| Superior | 24% | 76% |
| <i>d. Developmental/remedial writing course (also referred to as Basic Skills, College Prep, etc.)</i> | | |
| WITC | 24% | 76% |
| Ashland | 21% | 79% |
| New Richmond | 16% | 84% |
| Rice Lake | 29% | 71% |
| Superior | 30% | 71% |
| <i>e. Developmental/remedial math course (also referred to as Basic Skills, College Prep, etc.)</i> | | |
| WITC | 25% | 75% |
| Ashland | 31% | 69% |
| New Richmond | 25% | 75% |
| Rice Lake | 21% | 79% |

| 8. Which of the following have you done, or are you currently doing at WITC? | Yes | No |
|--|-----|------|
| Superior | 28% | 72% |
| <i>f. Honors course</i> | | |
| WITC | 2% | 98% |
| Ashland | 0% | 100% |
| New Richmond | 1% | 100% |
| Rice Lake | 1% | 99% |
| Superior | 5% | 95% |

| 9. How much does WITC emphasize the following? | Very Much | Quite a Bit | Some | Very Little |
|--|-----------|-------------|------|-------------|
| <i>a. Encouraging you to spend significant amounts of time studying</i> | | | | |
| WITC | 32% | 38% | 27% | 4% |
| Ashland | 38% | 40% | 21% | 0% |
| New Richmond | 23% | 41% | 32% | 5% |
| Rice Lake | 38% | 33% | 25% | 3% |
| Superior | 34% | 37% | 25% | 4% |
| <i>b. Providing the support you need to help you succeed at this college</i> | | | | |
| WITC | 46% | 40% | 12% | 2% |
| Ashland | 57% | 36% | 5% | 2% |
| New Richmond | 38% | 49% | 9% | 3% |
| Rice Lake | 48% | 37% | 14% | 1% |
| Superior | 49% | 34% | 15% | 1% |
| <i>c. Encouraging contact among students from different economic, social, and racial or ethnic backgrounds</i> | | | | |
| WITC | 22% | 30% | 35% | 13% |
| Ashland | 29% | 33% | 33% | 5% |
| New Richmond | 13% | 34% | 39% | 14% |
| Rice Lake | 28% | 22% | 34% | 16% |
| Superior | 24% | 34% | 32% | 11% |
| <i>d. Helping you cope with your non-academic responsibilities (work, family, etc.)</i> | | | | |
| WITC | 13% | 23% | 39% | 25% |
| Ashland | 15% | 37% | 39% | 10% |
| New Richmond | 9% | 21% | 44% | 26% |
| Rice Lake | 16% | 21% | 36% | 27% |
| Superior | 14% | 25% | 36% | 24% |
| <i>e. Providing the support you need to thrive socially</i> | | | | |
| WITC | 15% | 32% | 39% | 15% |
| Ashland | 21% | 38% | 36% | 5% |
| New Richmond | 11% | 33% | 41% | 14% |
| Rice Lake | 16% | 29% | 36% | 19% |
| Superior | 16% | 31% | 40% | 14% |
| <i>f. Providing the financial support you need to afford your education</i> | | | | |
| WITC | 29% | 31% | 28% | 12% |
| Ashland | 31% | 31% | 21% | 17% |
| New Richmond | 19% | 35% | 31% | 15% |

| | | | | | |
|----|---|-----------|-------------|------|-------------|
| 9. | How much does WITC emphasize the following? | Very Much | Quite a Bit | Some | Very Little |
| | Rice Lake | 37% | 27% | 28% | 7% |
| | Superior | 31% | 32% | 26% | 11% |

| 10. | About how many hours do you spend in a typical 7-day week doing each of the following? | Hours Per Week | | | | | |
|---|--|----------------|-----|------|-------|-------|--------------|
| | | None | 1-5 | 6-10 | 11-20 | 21-30 | More than 30 |
| <i>a. Preparing for class (studying, reading, writing, rehearsing, doing homework, etc.)</i> | | | | | | | |
| | WITC | 3% | 34% | 24% | 22% | 10% | 8% |
| | Ashland | 2% | 19% | 24% | 31% | 12% | 12% |
| | New Richmond | 3% | 37% | 26% | 19% | 9% | 5% |
| | Rice Lake | 0% | 33% | 26% | 24% | 9% | 8% |
| | Superior | 4% | 34% | 20% | 22% | 11% | 8% |
| <i>b. Working for pay</i> | | | | | | | |
| | WITC | 14% | 8% | 9% | 20% | 24% | 25% |
| | Ashland | 17% | 12% | 10% | 21% | 21% | 19% |
| | New Richmond | 13% | 6% | 5% | 19% | 26% | 30% |
| | Rice Lake | 14% | 6% | 13% | 18% | 26% | 23% |
| | Superior | 14% | 11% | 11% | 21% | 20% | 22% |
| <i>c. Participating in college-sponsored activities (organizations, campus publications, student government, intramural sports, etc.)</i> | | | | | | | |
| | WITC | 70% | 26% | 2% | 1% | <1% | <1% |
| | Ashland | 55% | 43% | 2% | 0% | 0% | 0% |
| | New Richmond | 76% | 19% | 3% | 1% | 0% | 1% |
| | Rice Lake | 72% | 24% | 2% | 1% | 1% | 0% |
| | Superior | 65% | 32% | 1% | 1% | 1% | 0% |
| <i>d. Providing care for dependents living with you (parents, children, spouse, etc.)</i> | | | | | | | |
| | WITC | 48% | 16% | 7% | 4% | 3% | 21% |
| | Ashland | 52% | 14% | 7% | 0% | 10% | 17% |
| | New Richmond | 54% | 17% | 7% | 3% | 0% | 19% |
| | Rice Lake | 44% | 16% | 7% | 4% | 4% | 26% |
| | Superior | 45% | 15% | 9% | 6% | 5% | 19% |
| <i>e. Commuting to and from classes</i> | | | | | | | |
| | WITC | 5% | 61% | 24% | 5% | 2% | 3% |
| | Ashland | 2% | 74% | 21% | 0% | 2% | 0% |
| | New Richmond | 6% | 62% | 21% | 6% | 1% | 3% |
| | Rice Lake | 6% | 53% | 28% | 7% | 2% | 5% |
| | Superior | 5% | 64% | 24% | 4% | 1% | 1% |

| | | | | | |
|--|--|-----------|-------------|------|-------------|
| 11. | How much has your experience at WITC contributed to your knowledge, skills, and personal development in the following areas? | Very Much | Quite a Bit | Some | Very Little |
| <i>a. Acquiring job or work-related knowledge and skills</i> | | | | | |
| | WITC | 44% | 32% | 16% | 8% |

| 11. | How much has your experience at WITC contributed to your knowledge, skills, and personal development in the following areas? | Very Much | Quite a Bit | Some | Very Little |
|--|--|-----------|-------------|------|-------------|
| | Ashland | 67% | 21% | 12% | 0% |
| | New Richmond | 37% | 35% | 19% | 9% |
| | Rice Lake | 38% | 33% | 19% | 10% |
| | Superior | 51% | 30% | 12% | 7% |
| <i>b. Writing clearly and effectively</i> | | | | | |
| | WITC | 21% | 35% | 30% | 14% |
| | Ashland | 29% | 40% | 26% | 5% |
| | New Richmond | 17% | 39% | 31% | 13% |
| | Rice Lake | 26% | 35% | 24% | 15% |
| | Superior | 19% | 31% | 35% | 15% |
| <i>c. Speaking clearly and effectively</i> | | | | | |
| | WITC | 22% | 36% | 30% | 12% |
| | Ashland | 29% | 40% | 29% | 2% |
| | New Richmond | 19% | 35% | 33% | 13% |
| | Rice Lake | 28% | 32% | 26% | 13% |
| | Superior | 19% | 40% | 30% | 11% |
| <i>d. Thinking critically and analytically</i> | | | | | |
| | WITC | 35% | 42% | 18% | 5% |
| | Ashland | 45% | 43% | 10% | 2% |
| | New Richmond | 27% | 47% | 19% | 7% |
| | Rice Lake | 38% | 35% | 21% | 6% |
| | Superior | 39% | 44% | 15% | 2% |
| <i>e. Solving numerical problems</i> | | | | | |
| | WITC | 23% | 30% | 31% | 16% |
| | Ashland | 29% | 38% | 26% | 7% |
| | New Richmond | 18% | 35% | 32% | 15% |
| | Rice Lake | 21% | 24% | 33% | 21% |
| | Superior | 28% | 30% | 30% | 13% |
| <i>f. Working effectively with others</i> | | | | | |
| | WITC | 38% | 36% | 21% | 5% |
| | Ashland | 48% | 38% | 14% | 0% |
| | New Richmond | 32% | 39% | 21% | 7% |
| | Rice Lake | 34% | 39% | 20% | 7% |
| | Superior | 44% | 32% | 22% | 1% |
| <i>g. Learning effectively on your own</i> | | | | | |
| | WITC | 35% | 38% | 22% | 5% |
| | Ashland | 45% | 33% | 19% | 2% |
| | New Richmond | 28% | 41% | 26% | 5% |
| | Rice Lake | 36% | 37% | 18% | 9% |
| | Superior | 40% | 37% | 21% | 2% |
| <i>h. Developing clearer career goals</i> | | | | | |
| | WITC | 37% | 35% | 20% | 8% |
| | Ashland | 45% | 33% | 19% | 2% |
| | New Richmond | 29% | 40% | 22% | 10% |
| | Rice Lake | 33% | 33% | 22% | 11% |

| | | | | | |
|--|--|-----------|-------------|------|-------------|
| 11. | How much has your experience at WITC contributed to your knowledge, skills, and personal development in the following areas? | Very Much | Quite a Bit | Some | Very Little |
| | Superior | 46% | 32% | 17% | 5% |
| <i>i. Gaining information about career opportunities</i> | | | | | |
| | WITC | 36% | 36% | 20% | 8% |
| | Ashland | 55% | 29% | 14% | 2% |
| | New Richmond | 27% | 40% | 26% | 7% |
| | Rice Lake | 30% | 36% | 21% | 12% |
| | Superior | 45% | 33% | 16% | 7% |

12. This section has three parts. Please answer all three parts, indicating (1) how often you have used the following services during the current academic year, (2) how satisfied you are with the services, and (3) how important the services are to you at WITC.

| (1) How Often | FREQUENCY OF USE | | | |
|--|------------------|-----------|--------|-------|
| | 5 or more times | 2-4 times | 1 time | Never |
| <i>a. Academic advising/planning</i> | | | | |
| WITC | 11% | 44% | 27% | 18% |
| Ashland | 23% | 53% | 13% | 13% |
| New Richmond | 4% | 41% | 26% | 28% |
| Rice Lake | 14% | 36% | 36% | 15% |
| Superior | 12% | 52% | 24% | 13% |
| <i>b. Career counseling</i> | | | | |
| WITC | 4% | 17% | 18% | 60% |
| Ashland | 5% | 34% | 20% | 41% |
| New Richmond | 6% | 14% | 14% | 67% |
| Rice Lake | 3% | 17% | 24% | 56% |
| Superior | 4% | 18% | 18% | 60% |
| <i>c. Job placement assistance</i> | | | | |
| WITC | 3% | 10% | 11% | 76% |
| Ashland | 2% | 12% | 24% | 61% |
| New Richmond | 4% | 13% | 10% | 73% |
| Rice Lake | 2% | 5% | 9% | 84% |
| Superior | 3% | 10% | 12% | 76% |
| <i>d. Peer or other tutoring</i> | | | | |
| WITC | 8% | 8% | 9% | 74% |
| Ashland | 15% | 15% | 8% | 63% |
| New Richmond | 9% | 7% | 10% | 74% |
| Rice Lake | 5% | 6% | 8% | 81% |
| Superior | 8% | 9% | 11% | 72% |
| <i>e. Skill labs (writing, math, etc.)</i> | | | | |
| WITC | 21% | 16% | 9% | 54% |
| Ashland | 37% | 12% | 2% | 49% |
| New Richmond | 17% | 17% | 6% | 61% |

| (1) How Often | FREQUENCY OF USE | | | |
|---|------------------|-----------|--------|-------|
| | 5 or more times | 2-4 times | 1 time | Never |
| Rice Lake | 19% | 13% | 12% | 56% |
| Superior | 24% | 19% | 10% | 47% |
| <i>f. Child care</i> | | | | |
| WITC | 3% | 1% | 1% | 94% |
| Ashland | 2% | 2% | 2% | 93% |
| New Richmond | 3% | 1% | 1% | 94% |
| Rice Lake | 4% | 2% | 0% | 94% |
| Superior | 2% | 1% | 1% | 96% |
| <i>g. Financial aid advising</i> | | | | |
| WITC | 8% | 31% | 28% | 33% |
| Ashland | 5% | 28% | 43% | 25% |
| New Richmond | 3% | 29% | 24% | 46% |
| Rice Lake | 13% | 30% | 36% | 22% |
| Superior | 9% | 36% | 24% | 32% |
| <i>h. Computer lab</i> | | | | |
| WITC | 47% | 21% | 10% | 23% |
| Ashland | 46% | 12% | 7% | 34% |
| New Richmond | 47% | 20% | 8% | 25% |
| Rice Lake | 43% | 20% | 12% | 25% |
| Superior | 50% | 24% | 10% | 17% |
| <i>i. Student organizations</i> | | | | |
| WITC | 12% | 19% | 12% | 57% |
| Ashland | 18% | 23% | 8% | 53% |
| New Richmond | 12% | 12% | 10% | 65% |
| Rice Lake | 11% | 15% | 12% | 62% |
| Superior | 11% | 29% | 14% | 46% |
| <i>j. Transfer advising/planning</i> | | | | |
| WITC | 1% | 8% | 15% | 75% |
| Ashland | 0% | 0% | 13% | 87% |
| New Richmond | 2% | 11% | 14% | 74% |
| Rice Lake | 1% | 6% | 15% | 78% |
| Superior | 1% | 9% | 18% | 72% |
| <i>k. Library resources and services</i> | | | | |
| WITC | 28% | 27% | 15% | 29% |
| Ashland | 29% | 22% | 10% | 39% |
| New Richmond | 19% | 26% | 17% | 38% |
| Rice Lake | 27% | 32% | 16% | 25% |
| Superior | 39% | 24% | 15% | 22% |
| <i>l. Services for students with disabilities</i> | | | | |
| WITC | 5% | 4% | 4% | 87% |
| Ashland | 7% | 0% | 2% | 90% |
| New Richmond | 2% | 4% | 4% | 90% |
| Rice Lake | 6% | 3% | 5% | 86% |
| Superior | 4% | 6% | 3% | 86% |

| (1) How Often | FREQUENCY OF USE | | | |
|---|------------------|-----------|--------|-------|
| | 5 or more times | 2-4 times | 1 time | Never |
| <i>m. Services for active military and veterans</i> | | | | |
| WITC | 1% | 3% | 2% | 93% |
| Ashland | 0% | 2% | 2% | 95% |
| New Richmond | 1% | 4% | 4% | 91% |
| Rice Lake | 2% | 3% | 1% | 94% |
| Superior | 2% | 2% | 2% | 95% |

| (2) How Satisfied | SATISFACTION | | | |
|--|--------------|-----------|------------|------|
| | Very | Some-what | Not at all | N.A. |
| <i>a. Academic advising/planning</i> | | | | |
| WITC | 43% | 37% | 2% | 18% |
| Ashland | 68% | 23% | 3% | 8% |
| New Richmond | 31% | 38% | 2% | 29% |
| Rice Lake | 50% | 33% | 3% | 14% |
| Superior | 45% | 41% | 2% | 12% |
| <i>b. Career counseling</i> | | | | |
| WITC | 21% | 21% | 5% | 52% |
| Ashland | 43% | 18% | 10% | 30% |
| New Richmond | 17% | 20% | 6% | 57% |
| Rice Lake | 23% | 20% | 3% | 53% |
| Superior | 19% | 23% | 6% | 52% |
| <i>c. Job placement assistance</i> | | | | |
| WITC | 16% | 12% | 6% | 66% |
| Ashland | 33% | 10% | 5% | 53% |
| New Richmond | 16% | 14% | 7% | 63% |
| Rice Lake | 15% | 8% | 2% | 76% |
| Superior | 15% | 13% | 8% | 64% |
| <i>d. Peer or other tutoring</i> | | | | |
| WITC | 16% | 12% | 5% | 67% |
| Ashland | 26% | 15% | 5% | 54% |
| New Richmond | 19% | 11% | 4% | 67% |
| Rice Lake | 14% | 6% | 4% | 76% |
| Superior | 13% | 17% | 7% | 63% |
| <i>e. Skill labs (writing, math, etc.)</i> | | | | |
| WITC | 25% | 21% | 4% | 50% |
| Ashland | 40% | 15% | 3% | 43% |
| New Richmond | 20% | 20% | 2% | 58% |
| Rice Lake | 27% | 16% | 5% | 52% |
| Superior | 26% | 27% | 5% | 42% |
| <i>f. Child care</i> | | | | |
| WITC | 4% | 3% | 5% | 87% |
| Ashland | 3% | 5% | 3% | 89% |

| (2) How Satisfied | SATISFACTION | | | |
|---|--------------|---------------|------------|------|
| | Very | Some- what | Not at all | N.A. |
| New Richmond | 5% | 2% | 5% | 89% |
| Rice Lake | 6% | 3% | 5% | 86% |
| Superior | 3% | 5% | 6% | 86% |
| <i>g. Financial aid advising</i> | | | | |
| WITC | 43% | 22% | 5% | 30% |
| Ashland | 51% | 21% | 8% | 21% |
| New Richmond | 33% | 19% | 7% | 42% |
| Rice Lake | 54% | 22% | 3% | 21% |
| Superior | 42% | 24% | 5% | 28% |
| <i>h. Computer lab</i> | | | | |
| WITC | 57% | 19% | 3% | 22% |
| Ashland | 58% | 8% | 5% | 30% |
| New Richmond | 53% | 18% | 3% | 26% |
| Rice Lake | 56% | 17% | 3% | 24% |
| Superior | 61% | 22% | 3% | 14% |
| <i>i. Student organizations</i> | | | | |
| WITC | 20% | 23% | 4% | 53% |
| Ashland | 23% | 33% | 0% | 44% |
| New Richmond | 15% | 17% | 7% | 61% |
| Rice Lake | 18% | 21% | 3% | 58% |
| Superior | 26% | 28% | 3% | 43% |
| <i>j. Transfer advising/planning</i> | | | | |
| WITC | 12% | 12% | 6% | 70% |
| Ashland | 0% | 11% | 8% | 82% |
| New Richmond | 13% | 12% | 4% | 70% |
| Rice Lake | 13% | 11% | 4% | 73% |
| Superior | 13% | 13% | 9% | 65% |
| <i>k. Library resources and services</i> | | | | |
| WITC | 47% | 22% | 3% | 28% |
| Ashland | 54% | 13% | 3% | 31% |
| New Richmond | 35% | 26% | 3% | 36% |
| Rice Lake | 50% | 24% | 2% | 24% |
| Superior | 55% | 19% | 4% | 22% |
| <i>l. Services for students with disabilities</i> | | | | |
| WITC | 10% | 5% | 3% | 82% |
| Ashland | 8% | 3% | 0% | 90% |
| New Richmond | 6% | 6% | 4% | 85% |
| Rice Lake | 13% | 6% | 2% | 79% |
| Superior | 11% | 4% | 5% | 81% |
| <i>m. Services for active military and veterans</i> | | | | |
| WITC | 6% | 4% | 4% | 86% |
| Ashland | 3% | 5% | 8% | 85% |
| New Richmond | 6% | 7% | 3% | 85% |
| Rice Lake | 9% | 3% | 4% | 84% |
| Superior | 4% | 2% | 6% | 89% |

| (3) How Important | IMPORTANCE | | |
|--|------------|----------|------------|
| | Very | Somewhat | Not at all |
| a. Academic advising/planning | | | |
| WITC | 61% | 31% | 8% |
| Ashland | 68% | 33% | 0% |
| New Richmond | 56% | 32% | 12% |
| Rice Lake | 65% | 26% | 9% |
| Superior | 62% | 35% | 4% |
| b. Career counseling | | | |
| WITC | 46% | 33% | 21% |
| Ashland | 64% | 28% | 8% |
| New Richmond | 43% | 35% | 22% |
| Rice Lake | 46% | 30% | 24% |
| Superior | 46% | 33% | 21% |
| c. Job placement assistance | | | |
| WITC | 45% | 27% | 27% |
| Ashland | 65% | 28% | 8% |
| New Richmond | 46% | 25% | 29% |
| Rice Lake | 41% | 26% | 33% |
| Superior | 45% | 31% | 25% |
| d. Peer or other tutoring | | | |
| WITC | 37% | 32% | 31% |
| Ashland | 51% | 41% | 8% |
| New Richmond | 35% | 33% | 32% |
| Rice Lake | 35% | 26% | 39% |
| Superior | 37% | 35% | 28% |
| e. Skill labs (writing, math, etc.) | | | |
| WITC | 42% | 33% | 25% |
| Ashland | 55% | 30% | 15% |
| New Richmond | 35% | 35% | 30% |
| Rice Lake | 48% | 26% | 26% |
| Superior | 42% | 37% | 21% |
| f. Child care | | | |
| WITC | 29% | 17% | 54% |
| Ashland | 45% | 11% | 45% |
| New Richmond | 23% | 18% | 58% |
| Rice Lake | 31% | 13% | 56% |
| Superior | 29% | 20% | 51% |
| g. Financial aid advising | | | |
| WITC | 69% | 16% | 15% |
| Ashland | 74% | 18% | 8% |
| New Richmond | 57% | 20% | 23% |
| Rice Lake | 79% | 11% | 11% |
| Superior | 71% | 18% | 12% |
| h. Computer lab | | | |
| WITC | 64% | 23% | 14% |

| (3) How Important | IMPORTANCE | | |
|---|------------|----------|------------|
| | Very | Somewhat | Not at all |
| Ashland | 65% | 23% | 13% |
| New Richmond | 63% | 21% | 16% |
| Rice Lake | 64% | 22% | 14% |
| Superior | 64% | 25% | 11% |
| <i>i. Student organizations</i> | | | |
| WITC | 27% | 39% | 34% |
| Ashland | 26% | 49% | 26% |
| New Richmond | 24% | 38% | 38% |
| Rice Lake | 30% | 32% | 38% |
| Superior | 27% | 45% | 28% |
| <i>j. Transfer advising/planning</i> | | | |
| WITC | 33% | 30% | 37% |
| Ashland | 29% | 42% | 29% |
| New Richmond | 34% | 30% | 36% |
| Rice Lake | 36% | 23% | 41% |
| Superior | 31% | 33% | 36% |
| <i>k. Library resources and services</i> | | | |
| WITC | 55% | 27% | 18% |
| Ashland | 58% | 25% | 18% |
| New Richmond | 44% | 31% | 25% |
| Rice Lake | 60% | 26% | 14% |
| Superior | 63% | 24% | 13% |
| <i>l. Services for students with disabilities</i> | | | |
| WITC | 48% | 15% | 38% |
| Ashland | 59% | 10% | 31% |
| New Richmond | 41% | 18% | 41% |
| Rice Lake | 53% | 9% | 38% |
| Superior | 49% | 16% | 35% |

| (3) How Important | IMPORTANCE | | |
|---|------------|----------|------------|
| | Very | Somewhat | Not at all |
| <i>m. Services for active military and veterans</i> | | | |
| WITC | 45% | 15% | 40% |
| Ashland | 51% | 13% | 36% |
| New Richmond | 41% | 20% | 39% |
| Rice Lake | 47% | 11% | 42% |
| Superior | 46% | 15% | 39% |

| | | | | |
|---|--|--|--|--|
| 13. During the current academic term at this college, I completed registration before the first class session(s). | Yes, I was registered for <u>all</u> of my courses before the first class session(s) | Mostly; I was registered for <u>most</u> of my courses before the first class session(s) | Partly; I was registered for <u>some</u> of my courses before the first class session(s) | No, I was <u>not</u> registered for <u>any</u> of my courses before the first class session(s) |
| WITC | 95% | 3% | <1% | 1% |
| Ashland | 90% | 7% | 0% | 2% |
| New Richmond | 97% | 2% | 1% | 1% |
| Rice Lake | 96% | 3% | 0% | 1% |
| Superior | 95% | 4% | 0% | 1% |

| | | | | | |
|---|--|---|---|--|--|
| 14. The one response that <i>best</i> describes my experience with <u>orientation</u> when I first came to this college is: | I took part in an online orientation prior to the beginning of classes | I attended an on-campus orientation prior to the beginning of classes | I enrolled in an orientation course as part of my course schedule during my first academic term | I was not aware of a college orientation | I was unable to participate in orientation due to scheduling or other issues |
| WITC | 17% | 60% | 3% | 5% | 16% |
| Ashland | 12% | 71% | 0% | 0% | 17% |
| New Richmond | 16% | 58% | 3% | 6% | 16% |
| Rice Lake | 18% | 62% | 1% | 5% | 14% |
| Superior | 16% | 57% | 6% | 4% | 16% |

| | | |
|--|-----|-----|
| 15. During my first academic year at this college, I participated in a <u>first-year experience</u> program. | Yes | No |
| WITC | 14% | 86% |
| Ashland | 26% | 74% |
| New Richmond | 18% | 82% |
| Rice Lake | 9% | 91% |
| Superior | 11% | 89% |

| | | | |
|------|---|-----|-----|
| 16. | During my first academic year at this college, I participated in an <u>organized learning community</u> (a formal program in which groups of students take two or more classes together). | Yes | No |
| WITC | | 21% | 79% |
| | Ashland | 43% | 57% |
| | New Richmond | 22% | 78% |
| | Rice Lake | 16% | 84% |
| | Superior | 18% | 82% |

| | | | |
|------|---|-----|-----|
| 17. | During my first academic year at this college, I participated in a <u>student success course</u> (a course that teaches the skills needed to succeed in college). | Yes | No |
| WITC | | 15% | 85% |
| | Ashland | 14% | 86% |
| | New Richmond | 17% | 83% |
| | Rice Lake | 13% | 87% |
| | Superior | 15% | 85% |

| | | | | | |
|------|--|---|---|--|------|
| 18. | I was <u>told</u> that I should enroll in a developmental/remedial course (also referred to as Basic Skills, College Prep, etc.) in my first academic term at this college, and I... | Did enroll in <u>more than one</u> of these courses | Did enroll in <u>one</u> of these courses | Did not enroll in any of these courses | N.A. |
| WITC | | 6% | 14% | 23% | 57% |
| | Ashland | 5% | 19% | 17% | 60% |
| | New Richmond | 5% | 13% | 21% | 60% |
| | Rice Lake | 5% | 14% | 28% | 53% |
| | Superior | 8% | 14% | 22% | 56% |

| | | | | | |
|------|--|--|---|---|---|
| 19. | During the current academic term at this college, my instructors clearly explained a class attendance policy that specified how many classes I could miss without penalty. | <u>All</u> of my instructors explained a class attendance policy | <u>Most</u> of my instructors explained a class attendance policy | <u>Some</u> of my instructors explained a class attendance policy | <u>None</u> of my instructors explained a class attendance policy |
| WITC | | 80% | 10% | 7% | 3% |
| | Ashland | 76% | 12% | 10% | 2% |
| | New Richmond | 74% | 13% | 9% | 4% |
| | Rice Lake | 80% | 10% | 6% | 4% |
| | Superior | 86% | 7% | 5% | 2% |

| | | | | |
|--------------|--|-----|-----|---|
| 20. | Before the end of my first academic term at this college, an advisor helped me develop an academic plan (a personalized plan with a defined sequence of courses for completing a college certificate or degree and/or for transferring to a 4-year college or university). | Yes | No | I'm still in my first term; I have not yet developed an academic plan |
| WITC | | 42% | 34% | 24% |
| Ashland | | 40% | 45% | 14% |
| New Richmond | | 37% | 38% | 25% |
| Rice Lake | | 51% | 30% | 20% |
| Superior | | 40% | 31% | 28% |

| | | | | |
|--------------|--|-----|-----|------|
| 21. | Someone at this college contacts me if I am struggling with my studies to help me get the assistance I need. | Yes | No | N.A. |
| WITC | | 33% | 29% | 39% |
| Ashland | | 33% | 24% | 43% |
| New Richmond | | 26% | 34% | 41% |
| Rice Lake | | 41% | 27% | 32% |
| Superior | | 32% | 27% | 41% |

| | | | | | | |
|--------------|--|-------|-------------------------|---------------------|---------------------|--------------------------|
| 22. | During the current academic year at this college, I participated in supplemental instruction/supplemental learning (extra class sessions with the instructor or an experienced student). | Never | Less than 1 time a week | 1 to 2 times a week | 3 to 4 times a week | More than 4 times a week |
| WITC | | 80% | 11% | 7% | 1% | 1% |
| Ashland | | 74% | 12% | 10% | 2% | 2% |
| New Richmond | | 78% | 11% | 9% | 0% | 2% |
| Rice Lake | | 84% | 9% | 6% | 1% | 0% |
| Superior | | 80% | 13% | 6% | 1% | 0% |

| 23. | How likely is it that the following issues would cause you to withdraw from class or from WITC? | Very likely | Likely | Some-what likely | Not likely |
|--|---|-------------|--------|------------------|------------|
| <i>a. Working full-time</i> | | | | | |
| | WITC | 17% | 15% | 20% | 48% |
| | Ashland | 14% | 21% | 17% | 48% |
| | New Richmond | 15% | 16% | 21% | 49% |
| | Rice Lake | 18% | 15% | 21% | 47% |
| | Superior | 19% | 13% | 20% | 48% |
| <i>b. Caring for dependents</i> | | | | | |
| | WITC | 9% | 14% | 22% | 55% |
| | Ashland | 7% | 10% | 17% | 66% |
| | New Richmond | 7% | 14% | 21% | 59% |
| | Rice Lake | 10% | 20% | 25% | 45% |
| | Superior | 10% | 11% | 23% | 56% |
| <i>c. Academically unprepared</i> | | | | | |
| | WITC | 7% | 8% | 19% | 66% |
| | Ashland | 10% | 10% | 10% | 71% |
| | New Richmond | 4% | 5% | 17% | 75% |
| | Rice Lake | 10% | 11% | 20% | 60% |
| | Superior | 6% | 8% | 23% | 63% |
| <i>d. Lack of finances</i> | | | | | |
| | WITC | 25% | 16% | 23% | 36% |
| | Ashland | 40% | 14% | 10% | 36% |
| | New Richmond | 17% | 12% | 25% | 45% |
| | Rice Lake | 29% | 23% | 21% | 27% |
| | Superior | 26% | 14% | 25% | 35% |
| <i>e. Transfer to a 4-year college or university</i> | | | | | |
| | WITC | 8% | 8% | 15% | 68% |
| | Ashland | 7% | 7% | 19% | 67% |
| | New Richmond | 8% | 7% | 14% | 72% |
| | Rice Lake | 10% | 8% | 20% | 62% |
| | Superior | 6% | 10% | 13% | 71% |

| 24. | How supportive are your friends of your attending WITC? | Extremely | Quite a bit | Somewhat | Not very |
|-----|---|-----------|-------------|----------|----------|
| | WITC | 57% | 31% | 10% | 2% |
| | Ashland | 52% | 33% | 7% | 7% |
| | New Richmond | 54% | 33% | 9% | 3% |
| | Rice Lake | 63% | 25% | 11% | 1% |
| | Superior | 57% | 32% | 9% | 1% |

| 25. How supportive is your immediate family of your attending WITC? | Extremely | Quite a bit | Somewhat | Not Very |
|---|-----------|-------------|----------|----------|
| WITC | 74% | 20% | 5% | 1% |
| Ashland | 79% | 12% | 5% | 5% |
| New Richmond | 72% | 22% | 4% | 2% |
| Rice Lake | 76% | 18% | 5% | 1% |
| Superior | 73% | 21% | 5% | 1% |

| 26. Indicate which of the following are your reasons/goals for attending WITC. | Yes | No |
|--|-----|-----|
| <i>a. Complete a certificate program</i> | | |
| WITC | 66% | 34% |
| Ashland | 74% | 26% |
| New Richmond | 64% | 36% |
| Rice Lake | 65% | 35% |
| Superior | 66% | 34% |
| <i>b. Obtain an associate degree</i> | | |
| WITC | 72% | 28% |
| Ashland | 56% | 44% |
| New Richmond | 72% | 28% |
| Rice Lake | 80% | 20% |
| Superior | 67% | 33% |
| <i>c. Transfer to a 4-year college or university</i> | | |
| WITC | 32% | 68% |
| Ashland | 24% | 76% |
| New Richmond | 35% | 65% |
| Rice Lake | 30% | 70% |
| Superior | 33% | 67% |
| <i>d. Obtain or update job-related skills</i> | | |
| WITC | 74% | 26% |
| Ashland | 79% | 21% |
| New Richmond | 73% | 27% |
| Rice Lake | 71% | 29% |
| Superior | 77% | 23% |
| <i>e. Change careers</i> | | |
| WITC | 44% | 56% |
| Ashland | 52% | 48% |
| New Richmond | 42% | 58% |
| Rice Lake | 44% | 56% |
| Superior | 44% | 56% |
| <i>f. Self-improvement/personal enjoyment</i> | | |
| WITC | 73% | 27% |
| Ashland | 79% | 21% |
| New Richmond | 70% | 30% |
| Rice Lake | 70% | 30% |
| Superior | 76% | 24% |

| 27. | Indicate which of the following are sources you use to pay your tuition at WITC. | Major source | Minor source | Not a source |
|---|--|--------------|--------------|--------------|
| <i>a. My own income/savings</i> | | | | |
| | WITC | 36% | 41% | 23% |
| | Ashland | 34% | 32% | 34% |
| | New Richmond | 44% | 36% | 21% |
| | Rice Lake | 35% | 37% | 29% |
| | Superior | 31% | 50% | 18% |
| <i>b. Income/savings from family</i> | | | | |
| | WITC | 15% | 20% | 66% |
| | Ashland | 15% | 12% | 73% |
| | New Richmond | 18% | 18% | 64% |
| | Rice Lake | 12% | 18% | 70% |
| | Superior | 13% | 24% | 63% |
| <i>c. Employer contributions</i> | | | | |
| | WITC | 5% | 7% | 88% |
| | Ashland | 2% | 0% | 98% |
| | New Richmond | 7% | 7% | 86% |
| | Rice Lake | 2% | 6% | 92% |
| | Superior | 6% | 8% | 86% |
| <i>d. Active military or veteran benefits</i> | | | | |
| | WITC | 6% | 2% | 92% |
| | Ashland | 7% | 2% | 90% |
| | New Richmond | 8% | 1% | 91% |
| | Rice Lake | 5% | 2% | 93% |
| | Superior | 4% | 2% | 94% |
| <i>e. Grants</i> | | | | |
| | WITC | 41% | 13% | 46% |
| | Ashland | 51% | 10% | 39% |
| | New Richmond | 31% | 15% | 55% |
| | Rice Lake | 49% | 13% | 37% |
| | Superior | 42% | 12% | 46% |
| <i>f. Scholarships</i> | | | | |
| | WITC | 17% | 25% | 58% |
| | Ashland | 22% | 17% | 61% |
| | New Richmond | 14% | 26% | 60% |
| | Rice Lake | 20% | 21% | 59% |
| | Superior | 18% | 28% | 54% |
| <i>g. Student loans (bank, etc.)</i> | | | | |
| | WITC | 47% | 10% | 43% |
| | Ashland | 44% | 7% | 49% |
| | New Richmond | 41% | 8% | 51% |
| | Rice Lake | 46% | 14% | 40% |
| | Superior | 54% | 10% | 35% |
| <i>h. Public assistance</i> | | | | |
| | WITC | 5% | 5% | 91% |
| | Ashland | 5% | 0% | 95% |

| 27. Indicate which of the following are sources you use to pay your tuition at WITC. | Major source | Minor source | Not a source |
|--|--------------|--------------|--------------|
| New Richmond | 5% | 4% | 91% |
| Rice Lake | 6% | 6% | 88% |
| Superior | 3% | 5% | 92% |

| 28. When do you plan to take classes at WITC again? | I will accomplish my goal(s) during this academic term and will not be returning | I have no current plan to return | Within the next 12 months | Uncertain |
|---|--|----------------------------------|---------------------------|-----------|
| WITC | 17% | 8% | 57% | 18% |
| Ashland | 12% | 10% | 39% | 39% |
| New Richmond | 18% | 7% | 60% | 15% |
| Rice Lake | 13% | 8% | 68% | 11% |
| Superior | 19% | 10% | 49% | 22% |

| 29. At WITC, in what range is your overall college grade point average (GPA)? | A | B | C | D- or lower | I do not have a GPA at WITC |
|---|-----|-----|-----|-------------|-----------------------------|
| WITC | 40% | 49% | 8% | 1% | 2% |
| Ashland | 33% | 52% | 10% | 5% | 0% |
| New Richmond | 47% | 44% | 6% | 1% | 2% |
| Rice Lake | 39% | 50% | 9% | 0% | 3% |
| Superior | 36% | 52% | 9% | 2% | 1% |

| 30. In what range was your overall <u>high school</u> grade point average (GPA)? | A | B | C | D- or lower | I do not remember |
|--|-----|-----|-----|-------------|-------------------|
| WITC | 21% | 43% | 25% | 4% | 6% |
| Ashland | 19% | 31% | 26% | 12% | 12% |
| New Richmond | 18% | 44% | 29% | 4% | 4% |
| Rice Lake | 24% | 45% | 22% | 2% | 7% |
| Superior | 22% | 43% | 25% | 4% | 6% |

| 31. When do you most frequently take classes at WITC? | Day Classes (morning or afternoon) | Evening classes | Weekend classes |
|---|---------------------------------------|-----------------|-----------------|
| WITC | 96% | 4% | 0% |
| Ashland | 98% | 2% | 0% |
| New Richmond | 93% | 7% | 0% |
| Rice Lake | 97% | 3% | 0% |
| Superior | 97% | 3% | 0% |

| 32. During the current academic term, how many classes are you taking... | None | 1 | 2 | 3 | 4 | 5 or more |
|--|------|-----|-----|-----|-----|-----------|
| <i>a. Face-to-face (a class in which all instruction is face-to-face in a classroom)</i> | | | | | | |
| WITC | <1% | 8% | 16% | 17% | 27% | 31% |
| Ashland | 2% | 2% | 10% | 2% | 19% | 64% |
| New Richmond | 1% | 11% | 18% | 16% | 18% | 36% |
| Rice Lake | 0% | 10% | 24% | 16% | 28% | 22% |
| Superior | <1% | 5% | 10% | 23% | 35% | 26% |
| <i>b. Online (a class in which all instruction is online)</i> | | | | | | |
| WITC | 73% | 15% | 7% | 3% | 1% | 1% |
| Ashland | 69% | 13% | 13% | 3% | 0% | 3% |
| New Richmond | 70% | 13% | 8% | 5% | 2% | 1% |
| Rice Lake | 72% | 14% | 9% | 3% | 1% | 2% |
| Superior | 77% | 18% | 3% | 1% | 0% | 0% |
| <i>c. Hybrid (a class that is a mixture of face-to-face and online instruction)</i> | | | | | | |
| WITC | 73% | 17% | 4% | 2% | 2% | 2% |
| Ashland | 81% | 3% | 3% | 8% | 0% | 5% |
| New Richmond | 78% | 13% | 5% | 1% | 2% | 1% |
| Rice Lake | 69% | 21% | 4% | 2% | 1% | 4% |
| Superior | 70% | 21% | 5% | 2% | 3% | 0% |

| 33. How many <u>total</u> credit hours have you earned at WITC, not counting the courses you are currently taking this academic term? | None | 1-14 credits | 15-29 credits | 30-44 credits | 45-60 credits | Over 60 credits |
|---|------|--------------|---------------|---------------|---------------|-----------------|
| WITC | 9% | 32% | 27% | 15% | 10% | 7% |
| Ashland | 8% | 23% | 33% | 23% | 10% | 5% |
| New Richmond | 11% | 38% | 27% | 10% | 8% | 6% |
| Rice Lake | 13% | 31% | 28% | 15% | 7% | 6% |
| Superior | 6% | 30% | 25% | 18% | 14% | 7% |

| 34. How many <u>total</u> academic terms have you been enrolled at this college? | This is my first academic term | This is my second academic term | This is my third or fourth academic term | This is my fifth or sixth academic term | I have been enrolled more than six academic terms |
|--|--------------------------------|---------------------------------|--|---|---|
| WITC | 22% | 40% | 29% | 7% | 2% |
| Ashland | 12% | 38% | 38% | 7% | 5% |
| New Richmond | 25% | 43% | 25% | 5% | 4% |
| Rice Lake | 23% | 42% | 27% | 8% | 1% |
| Superior | 21% | 34% | 33% | 10% | 1% |

| 35. Would you recommend this college to a friend or family member? | Yes | No |
|--|------|----|
| WITC | 97% | 3% |
| Ashland | 100% | 0% |
| New Richmond | 96% | 4% |
| Rice Lake | 98% | 2% |
| Superior | 98% | 2% |

| 36. How would you evaluate your overall educational experience at WITC? | Excellent | Good | Fair | Poor |
|---|-----------|------|------|------|
| WITC | 54% | 40% | 5% | <1% |
| Ashland | 64% | 33% | 2% | 0% |
| New Richmond | 52% | 41% | 5% | 1% |
| Rice Lake | 50% | 43% | 7% | 0% |
| Superior | 58% | 38% | 4% | 0% |

| 37. Do you have children who live with you and depend on you for their care? | Yes | No |
|--|-----|-----|
| WITC | 25% | 75% |
| Ashland | 24% | 76% |
| New Richmond | 23% | 77% |
| Rice Lake | 29% | 71% |
| Superior | 25% | 75% |

| 38. Mark your age group. | Under 18 | 18-19 | 20-21 | 22-24 | 25-29 | 30-39 | 40-49 | 50-64 | 65+ |
|--------------------------|----------|-------|-------|-------|-------|-------|-------|-------|-----|
| WITC | 0% | 27% | 21% | 15% | 15% | 14% | 6% | 2% | <1% |
| Ashland | 0% | 29% | 17% | 12% | 17% | 19% | 7% | 0% | 0% |
| New Richmond | 0% | 29% | 24% | 15% | 12% | 13% | 5% | 4% | 0% |
| Rice Lake | 0% | 25% | 22% | 19% | 12% | 16% | 5% | 2% | 0% |
| Superior | 0% | 26% | 20% | 12% | 19% | 13% | 8% | 1% | <1% |

| 39. Your gender identity: | Man | Woman | Other | I prefer not to respond |
|---------------------------|-----|-------|-------|-------------------------|
| WITC | 45% | 54% | <1% | 1% |
| Ashland | 71% | 29% | 0% | 0% |
| New Richmond | 53% | 45% | 1% | 2% |
| Rice Lake | 25% | 73% | 1% | 1% |
| Superior | 48% | 51% | 0% | 1% |

| 40. Are you married? | Yes | No |
|----------------------|-----|-----|
| WITC | 17% | 83% |
| Ashland | 19% | 81% |
| New Richmond | 15% | 85% |
| Rice Lake | 19% | 81% |
| Superior | 17% | 83% |

| 41. Is English your native (first) language? | Yes | No |
|--|-----|----|
| WITC | 97% | 3% |
| Ashland | 98% | 2% |
| New Richmond | 98% | 2% |
| Rice Lake | 95% | 5% |
| Superior | 97% | 3% |

| 42. Are you a current or former member of the U.S. Armed Forces, Reserves, or National Guard? | Yes | No |
|---|-----|-----|
| WITC | 6% | 94% |
| Ashland | 5% | 95% |
| New Richmond | 7% | 94% |
| Rice Lake | 5% | 95% |
| Superior | 5% | 95% |

| 43. Are you an international student or non-resident alien? | Yes | No |
|---|-----|------|
| WITC | <1% | 100% |
| Ashland | 0% | 100% |
| New Richmond | 1% | 99% |
| Rice Lake | 0% | 100% |
| Superior | <1% | 100% |

| 44. Are you a student-athlete on a team sponsored by WITC's athletics department? | Yes | No |
|---|-----|------|
| WITC | 1% | 99% |
| Ashland | 0% | 100% |
| New Richmond | 1% | 99% |
| Rice Lake | 1% | 99% |
| Superior | <1% | 100% |

| 45. What is your racial or ethnic identification? | American Indian or Alaska Native | Asian | Black or African American | Hispanic or Latino | Native Hawaiian | Pacific Islander (non-Native Hawaiian) | White | Other | I prefer not to respond |
|---|----------------------------------|-------|---------------------------|--------------------|-----------------|--|-------|-------|-------------------------|
| WITC | 4% | 2% | 1% | 1% | <1% | <1% | 92% | 1% | 2% |
| Ashland | 19% | 0% | 5% | 2% | 0% | 0% | 81% | 0% | 0% |
| New Richmond | 2% | 4% | 1% | 1% | 1% | 1% | 94% | 1% | 1% |
| Rice Lake | 2% | 0% | 1% | 2% | 0% | 1% | 92% | 2% | 1% |
| Superior | 4% | 1% | 1% | 0% | 0% | 0% | 94% | 0% | 3% |

| 46. What is the highest academic credential you have earned? | None | GED | High school diploma | Vocational/technical certificate | Associate's degree | Bachelor's degree | Master's/doctoral/professional degree |
|--|------|-----|---------------------|----------------------------------|--------------------|-------------------|---------------------------------------|
| WITC | 1% | 5% | 67% | 18% | 5% | 5% | <1% |
| Ashland | 2% | 12% | 52% | 26% | 2% | 5% | 0% |
| New Richmond | 2% | 4% | 68% | 17% | 4% | 4% | 0% |
| Rice Lake | 0% | 3% | 69% | 19% | 5% | 2% | 1% |
| Superior | 0% | 4% | 65% | 16% | 7% | 7% | 0% |

| 47. Who in your family has attended at least some college? | Mother | Father | Brother/Sister | Child | Spouse/Partner | Legal Guardian | No one |
|--|--------|--------|----------------|-------|----------------|----------------|--------|
| WITC | 62% | 50% | 54% | 3% | 17% | <1% | 10% |
| Ashland | 69% | 50% | 60% | 2% | 33% | 0% | 5% |
| New Richmond | 65% | 56% | 54% | 3% | 13% | 1% | 6% |
| Rice Lake | 55% | 44% | 54% | 3% | 14% | 0% | 16% |
| Superior | 62% | 48% | 53% | 4% | 21% | <1% | 10% |

WTCS Consortium 2017 Special Focus Questions

| 1. Since your first academic term at WITC, have you met (in person or online) with an academic advisor before registering for classes each term? | Yes, before every academic term | Yes, before some academic terms, but not all | No |
|--|---------------------------------|--|-----|
| WITC | 44% | 30% | 26% |
| Ashland | 54% | 24% | 22% |
| New Richmond | 38% | 30% | 33% |
| Rice Lake | 45% | 30% | 24% |
| Superior | 48% | 32% | 20% |

| 2. Prior to registering for classes before this academic term at WITC, were you required to meet (in person or online) with an academic advisor? | Yes | No |
|--|-----|-----|
| WITC | 48% | 53% |
| Ashland | 60% | 40% |
| New Richmond | 37% | 63% |
| Rice Lake | 49% | 51% |
| Superior | 54% | 46% |

| 3. During this academic term at WITC, how many times have you met (in person or online) with an academic advisor? | None | Once | Twice | More than twice |
|---|------|------|-------|-----------------|
| WITC | 27% | 30% | 20% | 24% |
| Ashland | 10% | 24% | 22% | 44% |
| New Richmond | 34% | 31% | 19% | 18% |
| Rice Lake | 27% | 35% | 19% | 18% |
| Superior | 23% | 25% | 21% | 30% |

| 4. During this academic term at WITC, if you have met (in person or online) with an academic advisor more than once, did you meet with the same academic advisor each time? | Yes | No | I have only met with an academic advisor once this academic term at WITC | I have not met with an academic advisor during this academic term at WITC |
|---|-----|-----|--|---|
| WITC | 38% | 19% | 23% | 20% |
| Ashland | 63% | 12% | 20% | 5% |
| New Richmond | 31% | 18% | 25% | 27% |
| Rice Lake | 35% | 17% | 27% | 21% |
| Superior | 43% | 23% | 19% | 15% |

| 5. During your most recent meeting (in person or online) with an academic advisor during this academic term at WITC, he or she discussed when your next advising session should be. | Yes | No | I have not met with an academic advisor during this academic term at WITC |
|---|-----|-----|---|
| WITC | 25% | 51% | 24% |
| Ashland | 34% | 61% | 5% |
| New Richmond | 17% | 49% | 34% |
| Rice Lake | 22% | 54% | 24% |
| Superior | 32% | 49% | 19% |

| 6. I review progress toward my academic goals at WITC each time I meet (in person or online) with an academic advisor. | Strongly agree | Agree | Disagree | Strongly disagree | I have not met with an academic advisor at WITC |
|--|----------------|-------|----------|-------------------|---|
| WITC | 25% | 45% | 10% | 4% | 17% |
| Ashland | 60% | 30% | 0% | 5% | 5% |
| New Richmond | 13% | 46% | 12% | 5% | 25% |
| Rice Lake | 27% | 42% | 10% | 4% | 17% |
| Superior | 29% | 49% | 9% | 3% | 10% |

| 7. The first time I met with an academic advisor at WITC was... | In person, one-on-one | In person, in a group setting | Online | I have not met (in person or online) with an academic advisor at WITC |
|---|-----------------------|-------------------------------|--------|---|
| WITC | 78% | 9% | 2% | 12% |
| Ashland | 80% | 15% | 0% | 5% |
| New Richmond | 70% | 9% | 3% | 19% |
| Rice Lake | 81% | 7% | 1% | 11% |
| Superior | 83% | 9% | 1% | 7% |

| 8. How long did your first academic advising session at WITC last? | 15 minutes or less | 16-30 minutes | More than 30 minutes | I do not remember | I have not met (in person or online) with an academic advisor at WITC |
|--|--------------------|---------------|----------------------|-------------------|---|
| WITC | 30% | 38% | 13% | 8% | 11% |
| Ashland | 44% | 29% | 12% | 7% | 7% |
| New Richmond | 32% | 36% | 8% | 7% | 18% |
| Rice Lake | 25% | 36% | 19% | 10% | 10% |
| Superior | 30% | 42% | 13% | 9% | 6% |

| 9. If you were told you needed to take a developmental education class at WITC, did an academic advisor clearly explain why? | Yes | No | I was not told I needed to take developmental education classes at WITC | I have not met (in person or online) with an academic advisor at WITC |
|--|-----|-----|---|---|
| WITC | 18% | 8% | 62% | 12% |
| Ashland | 15% | 10% | 70% | 5% |
| New Richmond | 13% | 9% | 59% | 20% |
| Rice Lake | 21% | 9% | 61% | 9% |
| Superior | 21% | 6% | 65% | 8% |

| 10. Has an academic advisor at WITC helped you select a program, major, or pathway of study? | Yes, prior to starting classes my first academic term at WITC | Yes, but after classes began my first academic term at WITC | No | I have not met (in person or online) with an academic advisor at WITC |
|--|---|---|-----|---|
| WITC | 33% | 7% | 49% | 11% |
| Ashland | 35% | 18% | 40% | 8% |
| New Richmond | 25% | 7% | 50% | 18% |
| Rice Lake | 36% | 4% | 51% | 9% |
| Superior | 37% | 9% | 48% | 6% |

| 11. Prior to meeting (in person or online) with an academic advisor at WITC, I knew what I wanted my major to be. | Strongly agree | Agree | Disagree | Strongly disagree | I have not met with an academic advisor at WITC |
|---|----------------|-------|----------|-------------------|---|
| WITC | 59% | 22% | 6% | 3% | 11% |
| Ashland | 54% | 32% | 7% | 0% | 7% |
| New Richmond | 52% | 18% | 9% | 5% | 17% |
| Rice Lake | 64% | 21% | 3% | 2% | 11% |
| Superior | 63% | 25% | 5% | 2% | 5% |

| 12. After first meeting (in person or online) with an academic advisor at WITC, my understanding of how long it would take to complete my academic goals... | Changed to a shorter amount of time | Changed to a longer amount of time | Did not change | I do not remember | I have not met with an academic advisor at WITC |
|---|-------------------------------------|------------------------------------|----------------|-------------------|---|
| WITC | 8% | 21% | 50% | 9% | 12% |
| Ashland | 5% | 22% | 68% | 0% | 5% |
| New Richmond | 7% | 15% | 50% | 10% | 19% |
| Rice Lake | 7% | 28% | 43% | 10% | 12% |
| Superior | 11% | 20% | 52% | 11% | 7% |

| 13. An academic advisor at WITC has clearly explained to me which classes I need to take in order to reach my academic goals. | Strongly agree | Agree | Disagree | Strongly disagree | I have not met (in person or online) with an academic advisor at WITC |
|---|----------------|-------|----------|-------------------|---|
| WITC | 50% | 32% | 4% | 2% | 12% |
| Ashland | 63% | 29% | 2% | 0% | 5% |
| New Richmond | 39% | 33% | 6% | 2% | 20% |
| Rice Lake | 53% | 31% | 5% | 1% | 11% |
| Superior | 57% | 31% | 3% | 3% | 7% |

| 14. At WITC, an academic advisor has provided me with information about academic support services (tutoring services, writing center, math skill lab, etc.) | Strongly agree | Agree | Disagree | Strongly disagree | I have not met (in person or online) with an academic advisor at WITC |
|---|----------------|-------|----------|-------------------|---|
| WITC | 36% | 40% | 9% | 3% | 12% |
| Ashland | 46% | 39% | 2% | 5% | 7% |
| New Richmond | 27% | 44% | 7% | 4% | 19% |
| Rice Lake | 43% | 34% | 9% | 2% | 12% |
| Superior | 37% | 40% | 13% | 4% | 7% |

| 15. An academic advisor at WITC has talked with me about my commitments outside of school (work, children, dependents, etc.) to help me figure out how many courses to take. | Strongly agree | Agree | Disagree | Strongly disagree | I have not met (in person or online) with an academic advisor at WITC |
|--|----------------|-------|----------|-------------------|---|
| WITC | 20% | 36% | 23% | 7% | 13% |
| Ashland | 24% | 59% | 10% | 2% | 5% |
| New Richmond | 13% | 31% | 27% | 8% | 21% |
| Rice Lake | 22% | 35% | 25% | 5% | 12% |
| Superior | 25% | 38% | 22% | 7% | 8% |

| 16. At WITC, an academic advisor has discussed my career interests with me. | Strongly agree | Agree | Disagree | Strongly disagree |
|---|----------------|-------|----------|-------------------|
| WITC | 30% | 45% | 16% | 8% |
| Ashland | 43% | 50% | 8% | 0% |
| New Richmond | 23% | 42% | 19% | 16% |
| Rice Lake | 32% | 46% | 16% | 7% |
| Superior | 32% | 47% | 16% | 5% |

| 17. At WITC, an academic advisor has discussed with me regional employment opportunities based on my career interests. | Strongly agree | Agree | Disagree | Strongly disagree | I have not discussed employment opportunities with an academic advisor at WITC |
|--|----------------|-------|----------|-------------------|--|
| WITC | 18% | 28% | 26% | 5% | 22% |
| Ashland | 34% | 39% | 10% | 2% | 15% |
| New Richmond | 14% | 25% | 24% | 8% | 28% |
| Rice Lake | 13% | 29% | 33% | 3% | 22% |
| Superior | 22% | 28% | 26% | 6% | 18% |

| 18. At WITC, what has been your <u>main</u> source of academic advising (help with academic goal-setting, planning, course recommendations, graduation requirements, etc.)? | Instructors | Academic advisors (not instructors) | Friends, family, or other students | College website | Other college materials |
|---|-------------|-------------------------------------|------------------------------------|-----------------|-------------------------|
| WITC | 61% | 16% | 18% | 4% | 2% |
| Ashland | 88% | 5% | 5% | 3% | 0% |
| New Richmond | 57% | 11% | 24% | 4% | 4% |
| Rice Lake | 53% | 21% | 19% | 5% | 2% |
| Superior | 67% | 17% | 13% | 3% | 0% |

| 19. Has an academic advisor come to one of your classes at WITC to speak with you about your academic goals and planning? | Yes | No | I do not know |
|---|-----|-----|---------------|
| WITC | 29% | 54% | 17% |
| Ashland | 60% | 33% | 8% |
| New Richmond | 25% | 54% | 20% |
| Rice Lake | 26% | 58% | 16% |
| Superior | 30% | 55% | 15% |

| 20. Have any of your instructors at WITC recommended that you meet (in person or online) with an academic advisor? | Yes | No |
|--|-----|-----|
| WITC | 31% | 69% |
| Ashland | 51% | 49% |
| New Richmond | 26% | 74% |
| Rice Lake | 31% | 69% |
| Superior | 31% | 69% |

Appendix D

Appendix D - 2017 CCSSE Survey Results by Comparison Groups
Weighted Scores based on Student Enrollment Status (full-time/part-time)

| 1. Did you begin college at WITC or elsewhere? | Started Here | Started Elsewhere |
|--|--------------|-------------------|
| WITC | 68% | 32% |
| Small College Cohort | 72% | 28% |
| National | 71% | 29% |

| 2. Thinking about this current academic term, how would you characterize your enrollment at this college? | Full-time | Less than Full-time |
|---|-----------|---------------------|
| WITC | 81% | 19% |
| Small College Cohort - CCSSE does not provide data for this question. | | |
| National - CCSSE does not provide data for this question. | | |

| 3. Have you taken this survey in another class this term? |
|---|
| CCSSE does not provide weighted scores for this question. |

| 4. In your experiences at WITC during the current academic year, about how often have you done each of the following? | Very Often | Often | Some-times | Never |
|---|------------|-------|------------|-------|
| <i>a. Asked questions in class or contributed to class discussions</i> | | | | |
| WITC | 46% | 30% | 23% | 1% |
| Small College Cohort | 33% | 37% | 28% | 2% |
| National | 31% | 36% | 31% | 3% |
| <i>b. Made a class presentation</i> | | | | |
| WITC | 16% | 30% | 43% | 11% |
| Small College Cohort | 10% | 23% | 40% | 27% |
| National | 11% | 24% | 40% | 25% |
| <i>c. Prepared two or more drafts of a paper or assignment before turning it in</i> | | | | |
| WITC | 16% | 30% | 36% | 18% |
| Small College Cohort | 20% | 29% | 30% | 21% |
| National | 21% | 30% | 30% | 20% |
| <i>d. Worked on a paper or project that required integrating ideas or information from various sources</i> | | | | |
| WITC | 31% | 41% | 24% | 4% |
| Small College Cohort | 28% | 37% | 26% | 10% |
| National | 29% | 38% | 25% | 9% |
| <i>e. Come to class without completing readings or assignments</i> | | | | |
| WITC | 5% | 9% | 45% | 41% |
| Small College Cohort | 4% | 10% | 51% | 36% |
| National | 4% | 10% | 52% | 34% |
| <i>f. Worked with other students on projects during class</i> | | | | |
| WITC | 25% | 35% | 33% | 7% |

| 4. In your experiences at WITC during the current academic year, about how often have you done each of the following? | Very Often | Often | Sometimes | Never |
|---|------------|-------|-----------|-------|
| Small College Cohort | 19% | 34% | 36% | 11% |
| National | 18% | 35% | 37% | 11% |
| <i>g. Worked with classmates outside of class to prepare class assignments</i> | | | | |
| WITC | 11% | 18% | 43% | 28% |
| Small College Cohort | 9% | 18% | 37% | 36% |
| National | 8% | 18% | 38% | 36% |
| <i>h. Tutored or taught other students (paid or voluntary)</i> | | | | |
| WITC | 3% | 5% | 20% | 72% |
| Small College Cohort | 3% | 6% | 19% | 72% |
| National | 3% | 5% | 19% | 73% |
| <i>i. Participated in a community-based project as a part of a regular course</i> | | | | |
| WITC | 3% | 5% | 17% | 76% |
| Small College Cohort | 3% | 6% | 19% | 72% |
| National | 3% | 6% | 17% | 74% |
| <i>j. Used e-mail to communicate with an instructor</i> | | | | |
| WITC | 38% | 33% | 22% | 8% |
| Small College Cohort | 35% | 31% | 27% | 6% |
| National | 35% | 32% | 28% | 6% |
| <i>k. Discussed grades or assignments with an instructor</i> | | | | |
| WITC | 23% | 36% | 35% | 5% |
| Small College Cohort | 22% | 33% | 37% | 8% |
| National | 21% | 31% | 39% | 9% |
| <i>l. Talked about career plans with an instructor or advisor</i> | | | | |
| WITC | 14% | 22% | 44% | 21% |
| Small College Cohort | 13% | 24% | 42% | 21% |
| National | 12% | 22% | 42% | 24% |
| <i>m. Discussed ideas from your readings or classes with instructors outside of class</i> | | | | |
| WITC | 5% | 12% | 40% | 42% |
| Small College Cohort | 7% | 14% | 39% | 41% |
| National | 6% | 13% | 37% | 44% |
| <i>n. Received prompt feedback (written or oral) from instructors on your performance</i> | | | | |
| WITC | 31% | 45% | 21% | 3% |
| Small College Cohort | 23% | 40% | 30% | 6% |
| National | 23% | 40% | 31% | 7% |
| <i>o. Worked harder than you thought you could to meet an instructor's standards or expectations</i> | | | | |
| WITC | 19% | 38% | 36% | 7% |
| Small College Cohort | 19% | 36% | 36% | 9% |
| National | 18% | 35% | 37% | 10% |
| <i>p. Worked with instructors on activities other than coursework</i> | | | | |
| WITC | 4% | 10% | 30% | 56% |
| Small College Cohort | 4% | 10% | 25% | 61% |
| National | 4% | 8% | 23% | 66% |

| 4. | In your experiences at WITC during the current academic year, about how often have you done each of the following? | Very Often | Often | Sometimes | Never |
|---|--|------------|-------|-----------|-------|
| <i>q. Discussed ideas from your readings or classes with others outside of class (students, family members, co-workers, etc.)</i> | | | | | |
| WITC | | 20% | 32% | 38% | 10% |
| Small College Cohort | | 19% | 30% | 37% | 14% |
| National | | 19% | 29% | 38% | 14% |
| <i>r. Had serious conversations with students who differ from you</i> | | | | | |
| WITC | | 9% | 23% | 40% | 28% |
| Small College Cohort | | 10% | 19% | 41% | 30% |
| National | | 9% | 19% | 40% | 32% |
| <i>s. Skipped class</i> | | | | | |
| WITC | | 1% | 3% | 35% | 61% |
| Small College Cohort | | 2% | 4% | 38% | 56% |
| National | | 2% | 4% | 41% | 53% |

| 5. | During the current academic year, how much has your coursework at WITC emphasized the following mental activities? | Very Much | Quite A Bit | Some | Very Little |
|--|--|-----------|-------------|------|-------------|
| <i>a. Memorizing facts, ideas, or methods from your courses and readings so you can repeat them in pretty much the same form</i> | | | | | |
| WITC | | 28% | 36% | 30% | 7% |
| Small College Cohort | | 26% | 38% | 29% | 7% |
| National | | 26% | 38% | 28% | 7% |
| <i>b. Analyzing the basic elements of an idea, experience, or theory</i> | | | | | |
| WITC | | 32% | 41% | 24% | 4% |
| Small College Cohort | | 25% | 43% | 28% | 4% |
| National | | 26% | 43% | 26% | 4% |
| <i>c. Forming a new idea or understanding from various pieces of information</i> | | | | | |
| WITC | | 28% | 44% | 26% | 2% |
| Small College Cohort | | 25% | 42% | 28% | 5% |
| National | | 26% | 42% | 27% | 5% |
| <i>d. Making judgments about the value or soundness of information, arguments, or methods</i> | | | | | |
| WITC | | 19% | 38% | 31% | 12% |
| Small College Cohort | | 20% | 35% | 34% | 10% |
| National | | 20% | 35% | 33% | 11% |
| <i>e. Applying theories or concepts to practical problems or in new situations</i> | | | | | |
| WITC | | 34% | 36% | 26% | 5% |
| Small College Cohort | | 24% | 36% | 31% | 8% |
| National | | 24% | 36% | 31% | 9% |
| <i>f. Using information you have read or heard to perform a new skill</i> | | | | | |
| WITC | | 39% | 32% | 25% | 3% |
| Small College Cohort | | 30% | 36% | 27% | 7% |
| National | | 29% | 36% | 27% | 8% |

| 6. | During the current academic year, how much reading and writing have you done at WITC? | None | 1 to 4 | 5 to 10 | 11 to 20 | More than 20 |
|---|---|------|--------|---------|----------|--------------|
| <i>a. Number of assigned textbooks, manuals, books, or packets of course readings</i> | | | | | | |
| | WITC | 2% | 28% | 28% | 18% | 25% |
| | Small College Cohort | 3% | 36% | 29% | 16% | 16% |
| | National | 2% | 37% | 30% | 17% | 15% |
| <i>b. Number of books read on your own (not assigned) for personal enjoyment or academic enrichment</i> | | | | | | |
| | WITC | 41% | 39% | 11% | 4% | 4% |
| | Small College Cohort | 38% | 42% | 11% | 4% | 4% |
| | National | 36% | 44% | 12% | 5% | 4% |
| <i>c. Number of written papers or reports of any length</i> | | | | | | |
| | WITC | 7% | 33% | 28% | 20% | 13% |
| | Small College Cohort | 11% | 32% | 31% | 17% | 9% |
| | National | 10% | 32% | 32% | 17% | 9% |

| 7. | Mark the box that best represents the extent to which your examinations during the current academic year have challenged you to do your best work at WITC. | Extremely Challenging ← → Extremely Easy | | | | | | |
|----|--|--|-----|-----|-----|----|----|-----|
| | | 7 | 6 | 5 | 4 | 3 | 2 | 1 |
| | WITC | 11% | 24% | 36% | 21% | 5% | 2% | <1% |
| | Small College Cohort | 11% | 21% | 34% | 25% | 6% | 2% | 1% |
| | National | 9% | 20% | 35% | 26% | 7% | 2% | 1% |

| 8. | Which of the following have you done, or are you currently doing at WITC? | Yes | No |
|--|---|-----|-----|
| <i>a. Internship, field experience, co-op experience, or clinical assignment</i> | | | |
| | WITC | 33% | 67% |
| | Small College Cohort | 22% | 78% |
| | National | 17% | 83% |
| <i>b. An English course taught specifically for students whose first language is not English (ESL, ESOL)</i> | | | |
| | WITC | 4% | 96% |
| | Small College Cohort | 5% | 95% |
| | National | 6% | 94% |
| <i>c. Developmental/remedial reading course (also referred to as Basic Skills, College Prep, etc.)</i> | | | |
| | WITC | 15% | 85% |
| | Small College Cohort | 17% | 83% |
| | National | 18% | 82% |
| <i>d. Developmental/remedial writing course (also referred to as Basic Skills, College Prep, etc.)</i> | | | |
| | WITC | 24% | 76% |

| 8. Which of the following have you done, or are you currently doing at WITC? | Yes | No |
|---|-----|-----|
| Small College Cohort | 19% | 81% |
| National | 20% | 80% |
| <i>e. Developmental/remedial math course (also referred to as Basic Skills, College Prep, etc.)</i> | | |
| WITC | 22% | 78% |
| Small College Cohort | 28% | 72% |
| National | 29% | 71% |
| <i>f. Honors course</i> | | |
| WITC | 3% | 97% |
| Small College Cohort | 6% | 94% |
| National | 6% | 94% |

| 9. How much does WITC emphasize the following? | Very Much | Quite a Bit | Some | Very Little |
|--|-----------|-------------|------|-------------|
| <i>a. Encouraging you to spend significant amounts of time studying</i> | | | | |
| WITC | 33% | 37% | 27% | 4% |
| Small College Cohort | 32% | 43% | 22% | 4% |
| National | 32% | 43% | 22% | 4% |
| <i>b. Providing the support you need to help you succeed at this college</i> | | | | |
| WITC | 46% | 40% | 11% | 2% |
| Small College Cohort | 35% | 41% | 20% | 4% |
| National | 34% | 41% | 21% | 4% |
| <i>c. Encouraging contact among students from different economic, social, and racial or ethnic backgrounds</i> | | | | |
| WITC | 25% | 28% | 33% | 14% |
| Small College Cohort | 22% | 32% | 32% | 14% |
| National | 23% | 32% | 30% | 15% |
| <i>d. Helping you cope with your non-academic responsibilities (work, family, etc.)</i> | | | | |
| WITC | 12% | 24% | 39% | 25% |
| Small College Cohort | 11% | 20% | 35% | 34% |
| National | 10% | 19% | 34% | 36% |
| <i>e. Providing the support you need to thrive socially</i> | | | | |
| WITC | 14% | 34% | 36% | 17% |
| Small College Cohort | 13% | 26% | 38% | 23% |
| National | 12% | 24% | 38% | 25% |
| <i>f. Providing the financial support you need to afford your education</i> | | | | |
| WITC | 29% | 31% | 26% | 14% |
| Small College Cohort | 26% | 28% | 27% | 19% |
| National | 25% | 27% | 27% | 22% |

| 10. About how many hours do you spend in a typical 7-day week doing each of the following? | Hours Per Week | | | | | |
|--|----------------|-----|------|-------|-------|--------------|
| | None | 1-5 | 6-10 | 11-20 | 21-30 | More than 30 |
| <i>a. Preparing for class (studying, reading, writing, rehearsing, doing homework, etc.)</i> | | | | | | |
| WITC | 2% | 38% | 27% | 19% | 8% | 6% |
| Small College Cohort | 2% | 40% | 29% | 18% | 7% | 4% |
| National | 2% | 40% | 30% | 18% | 7% | 4% |
| <i>b. Working for pay</i> | | | | | | |
| WITC | 12% | 7% | 7% | 18% | 25% | 31% |
| Small College Cohort | 24% | 7% | 9% | 14% | 18% | 29% |
| National | 22% | 6% | 8% | 14% | 20% | 30% |
| <i>c. Participating in college-sponsored activities (organizations, campus publications, student government, intercollegiate or intramural sports, etc.)</i> | | | | | | |
| WITC | 77% | 20% | 1% | 1% | <1% | <1% |
| Small College Cohort | 75% | 17% | 4% | 2% | 1% | 1% |
| National | 79% | 14% | 3% | 2% | 1% | 1% |
| <i>d. Providing care for dependents living with you (parents, children, spouse, etc.)</i> | | | | | | |
| WITC | 45% | 15% | 8% | 5% | 3% | 24% |
| Small College Cohort | 47% | 15% | 8% | 5% | 4% | 21% |
| National | 48% | 16% | 8% | 6% | 4% | 18% |
| <i>e. Commuting to and from classes</i> | | | | | | |
| WITC | 7% | 68% | 18% | 5% | 1% | 2% |
| Small College Cohort | 9% | 66% | 16% | 5% | 2% | 2% |
| National | 7% | 68% | 16% | 5% | 2% | 2% |

| 11. How much has your experience at WITC contributed to your knowledge, skills, and personal development in the following areas? | Very Much | Quite a Bit | Some | Very Little |
|--|-----------|-------------|------|-------------|
| | | | | |
| WITC | 36% | 34% | 18% | 13% |
| Small College Cohort | 25% | 28% | 29% | 18% |
| National | 21% | 27% | 30% | 22% |
| <i>b. Writing clearly and effectively</i> | | | | |
| WITC | 21% | 37% | 26% | 16% |
| Small College Cohort | 23% | 37% | 29% | 11% |
| National | 23% | 37% | 29% | 11% |
| <i>c. Speaking clearly and effectively</i> | | | | |
| WITC | 24% | 35% | 29% | 13% |
| Small College Cohort | 22% | 35% | 30% | 13% |
| National | 22% | 35% | 30% | 14% |
| <i>d. Thinking critically and analytically</i> | | | | |
| WITC | 29% | 46% | 19% | 6% |
| Small College Cohort | 30% | 41% | 22% | 6% |
| National | 30% | 41% | 23% | 6% |

| | | | | | |
|--|--|-----------|-------------|------|-------------|
| 11. | How much has your experience at WITC contributed to your knowledge, skills, and personal development in the following areas? | Very Much | Quite a Bit | Some | Very Little |
| <i>e. Solving numerical problems</i> | | | | | |
| | WITC | 20% | 27% | 34% | 20% |
| | Small College Cohort | 22% | 33% | 29% | 16% |
| | National | 22% | 33% | 29% | 16% |
| <i>f. Working effectively with others</i> | | | | | |
| | WITC | 32% | 37% | 25% | 6% |
| | Small College Cohort | 27% | 37% | 27% | 9% |
| | National | 26% | 36% | 28% | 10% |
| <i>g. Learning effectively on your own</i> | | | | | |
| | WITC | 31% | 39% | 24% | 7% |
| | Small College Cohort | 32% | 39% | 22% | 6% |
| | National | 31% | 39% | 23% | 7% |
| <i>h. Developing clearer career goals</i> | | | | | |
| | WITC | 32% | 33% | 23% | 12% |
| | Small College Cohort | 29% | 32% | 26% | 14% |
| | National | 27% | 31% | 27% | 16% |
| <i>i. Gaining information about career opportunities</i> | | | | | |
| | WITC | 29% | 38% | 20% | 13% |
| | Small College Cohort | 25% | 29% | 28% | 18% |
| | National | 23% | 28% | 29% | 20% |

12. This section has three parts. Please answer all three parts, indicating (1) how often you have used the following services during the current academic year, (2) how satisfied you are with the services, and (3) how important the services are to you at WITC.

| (1) How Often | FREQUENCY OF USE | | | | |
|--------------------------------------|----------------------|-----------|--------|-------|-----|
| | 5 or more times | 2-4 times | 1 time | Never | |
| <i>a. Academic advising/planning</i> | | | | | |
| | WITC | 9% | 42% | 29% | 20% |
| | Small College Cohort | 14% | 49% | 23% | 14% |
| | National | 13% | 46% | 25% | 16% |
| <i>b. Career counseling</i> | | | | | |
| | WITC | 3% | 13% | 22% | 61% |
| | Small College Cohort | 4% | 15% | 17% | 65% |
| | National | 3% | 15% | 17% | 65% |
| <i>c. Job placement assistance</i> | | | | | |
| | WITC | 1% | 7% | 8% | 84% |
| | Small College Cohort | 2% | 5% | 7% | 87% |
| | National | 1% | 4% | 6% | 88% |
| <i>d. Peer or other tutoring</i> | | | | | |
| | WITC | 7% | 8% | 8% | 78% |

| (1) How Often | FREQUENCY OF USE | | | |
|---|------------------|-----------|--------|-------|
| | 5 or more times | 2-4 times | 1 time | Never |
| Small College Cohort | 10% | 14% | 11% | 65% |
| National | 11% | 14% | 11% | 64% |
| <i>e. Skill labs (writing, math, etc.)</i> | | | | |
| WITC | 17% | 15% | 9% | 59% |
| Small College Cohort | 18% | 16% | 10% | 56% |
| National | 16% | 16% | 11% | 58% |
| <i>f. Child care</i> | | | | |
| WITC | 3% | 2% | 1% | 93% |
| Small College Cohort | 2% | 2% | 2% | 94% |
| National | 2% | 2% | 2% | 95% |
| <i>g. Financial aid advising</i> | | | | |
| WITC | 5% | 31% | 29% | 35% |
| Small College Cohort | 12% | 30% | 21% | 36% |
| National | 11% | 27% | 20% | 42% |
| <i>h. Computer lab</i> | | | | |
| WITC | 42% | 18% | 12% | 28% |
| Small College Cohort | 34% | 21% | 11% | 34% |
| National | 32% | 21% | 11% | 35% |
| <i>i. Student organizations</i> | | | | |
| WITC | 8% | 15% | 11% | 66% |
| Small College Cohort | 7% | 10% | 10% | 73% |
| National | 5% | 8% | 9% | 77% |
| <i>j. Transfer advising/planning</i> | | | | |
| WITC | 1% | 8% | 16% | 75% |
| Small College Cohort | 4% | 13% | 17% | 65% |
| National | 5% | 14% | 18% | 64% |
| <i>k. Library resources and services</i> | | | | |
| WITC | 30% | 23% | 18% | 29% |
| Small College Cohort | 28% | 26% | 15% | 30% |
| National | 29% | 27% | 15% | 30% |
| <i>l. Services for students with disabilities</i> | | | | |
| WITC | 5% | 5% | 5% | 84% |
| Small College Cohort | 3% | 3% | 3% | 90% |
| National | 3% | 3% | 3% | 91% |
| <i>m. Services for active military and veterans</i> | | | | |
| WITC | 1% | 2% | 1% | 95% |
| Small College Cohort | 2% | 3% | 3% | 92% |
| National | 2% | 2% | 2% | 93% |

| (2) How Satisfied | SATISFACTION | | | |
|--------------------------------------|--------------|----------|------------|------|
| | Very | Somewhat | Not at all | N.A. |
| <i>a. Academic advising/planning</i> | | | | |
| WITC | 43% | 37% | 2% | 18% |
| Small College Cohort | 43% | 38% | 6% | 13% |

| (2) How Satisfied | SATISFACTION | | | |
|---|--------------|----------|------------|------|
| | Very | Somewhat | Not at all | N.A. |
| National | 39% | 39% | 7% | 15% |
| <i>b. Career counseling</i> | | | | |
| WITC | 22% | 18% | 6% | 54% |
| Small College Cohort | 17% | 18% | 7% | 58% |
| National | 16% | 18% | 7% | 58% |
| <i>c. Job placement assistance</i> | | | | |
| WITC | 12% | 9% | 5% | 74% |
| Small College Cohort | 7% | 10% | 8% | 75% |
| National | 6% | 9% | 7% | 78% |
| <i>d. Peer or other tutoring</i> | | | | |
| WITC | 15% | 9% | 4% | 72% |
| Small College Cohort | 20% | 16% | 6% | 58% |
| National | 20% | 17% | 6% | 57% |
| <i>e. Skill labs (writing, math, etc.)</i> | | | | |
| WITC | 24% | 19% | 4% | 53% |
| Small College Cohort | 24% | 21% | 5% | 51% |
| National | 23% | 20% | 5% | 53% |
| <i>f. Child care</i> | | | | |
| WITC | 4% | 4% | 3% | 90% |
| Small College Cohort | 5% | 5% | 6% | 84% |
| National | 4% | 5% | 5% | 86% |
| <i>g. Financial aid advising</i> | | | | |
| WITC | 43% | 21% | 4% | 32% |
| Small College Cohort | 35% | 25% | 8% | 32% |
| National | 30% | 23% | 9% | 38% |
| <i>h. Computer lab</i> | | | | |
| WITC | 51% | 19% | 3% | 27% |
| Small College Cohort | 43% | 23% | 4% | 31% |
| National | 42% | 22% | 4% | 33% |
| <i>i. Student organizations</i> | | | | |
| WITC | 17% | 18% | 4% | 61% |
| Small College Cohort | 13% | 16% | 6% | 65% |
| National | 11% | 14% | 6% | 69% |
| <i>j. Transfer advising/planning</i> | | | | |
| WITC | 12% | 12% | 6% | 70% |
| Small College Cohort | 17% | 18% | 7% | 58% |
| National | 17% | 18% | 7% | 57% |
| <i>k. Library resources and services</i> | | | | |
| WITC | 52% | 19% | 3% | 26% |
| Small College Cohort | 45% | 24% | 4% | 28% |
| National | 45% | 24% | 4% | 27% |
| <i>l. Services for students with disabilities</i> | | | | |
| WITC | 11% | 6% | 4% | 80% |
| Small College Cohort | 8% | 6% | 4% | 81% |
| National | 8% | 6% | 4% | 82% |

| (2) How Satisfied | SATISFACTION | | | |
|---|--------------|----------|------------|------|
| | Very | Somewhat | Not at all | N.A. |
| <i>m. Services for active military and veterans</i> | | | | |
| WITC | 5% | 2% | 4% | 89% |
| Small College Cohort | 7% | 6% | 5% | 82% |
| National | 6% | 5% | 5% | 84% |

| (3) How Important | IMPORTANCE | | |
|--|------------|----------|------------|
| | Very | Somewhat | Not at all |
| <i>a. Academic advising/planning</i> | | | |
| WITC | 61% | 31% | 8% |
| Small College Cohort | 69% | 24% | 7% |
| National | 68% | 24% | 8% |
| <i>b. Career counseling</i> | | | |
| WITC | 46% | 32% | 21% |
| Small College Cohort | 46% | 29% | 25% |
| National | 48% | 28% | 24% |
| <i>c. Job placement assistance</i> | | | |
| WITC | 42% | 29% | 29% |
| Small College Cohort | 35% | 30% | 35% |
| National | 35% | 30% | 35% |
| <i>d. Peer or other tutoring</i> | | | |
| WITC | 38% | 29% | 32% |
| Small College Cohort | 41% | 30% | 29% |
| National | 43% | 29% | 28% |
| <i>e. Skill labs (writing, math, etc.)</i> | | | |
| WITC | 42% | 33% | 25% |
| Small College Cohort | 43% | 32% | 26% |
| National | 43% | 31% | 26% |
| <i>f. Child care</i> | | | |
| WITC | 31% | 16% | 53% |
| Small College Cohort | 29% | 20% | 52% |
| National | 28% | 19% | 53% |
| <i>g. Financial aid advising</i> | | | |
| WITC | 70% | 14% | 15% |
| Small College Cohort | 65% | 18% | 17% |
| National | 63% | 18% | 19% |
| <i>h. Computer lab</i> | | | |
| WITC | 60% | 25% | 15% |
| Small College Cohort | 55% | 27% | 19% |
| National | 54% | 27% | 19% |
| <i>i. Student organizations</i> | | | |
| WITC | 26% | 38% | 36% |
| Small College Cohort | 27% | 35% | 38% |
| National | 26% | 34% | 40% |

| (3) How Important | IMPORTANCE | | |
|---|------------|----------|------------|
| | Very | Somewhat | Not at all |
| <i>j. Transfer advising/planning</i> | | | |
| WITC | 33% | 32% | 36% |
| Small College Cohort | 46% | 25% | 29% |
| National | 49% | 24% | 27% |
| <i>k. Library resources and services</i> | | | |
| WITC | 59% | 28% | 13% |
| Small College Cohort | 58% | 26% | 16% |
| National | 60% | 25% | 15% |
| <i>l. Services for students with disabilities</i> | | | |
| WITC | 52% | 14% | 34% |
| Small College Cohort | 45% | 15% | 39% |
| National | 45% | 15% | 40% |
| <i>m. Services for active military and veterans</i> | | | |
| WITC | 47% | 15% | 38% |
| Small College Cohort | 43% | 15% | 42% |
| National | 42% | 15% | 43% |

| | | | | |
|---|---|--|--|--|
| 13. During the current academic term at this college, I completed registration before the first class session(s). | Yes, I was registered for <u>all</u> of my courses before the first class sessions(s) | Mostly; I was registered for <u>most</u> of my courses before the first class session(s) | Partly; I was registered for <u>some</u> of my courses before the first class session(s) | No, I was <u>not</u> registered for <u>any</u> of my courses before the first class session(s) |
| WITC | 94% | 5% | 1% | 1% |
| Small College Cohort | 90% | 6% | 2% | 2% |
| National | 89% | 7% | 2% | 2% |

| | | | | | |
|---|--|---|---|--|--|
| 14. The one response that <i>best</i> describes my experience with <u>orientation</u> when I first came to this college is: | I took part in an online orientation prior to the beginning of classes | I attended an on-campus orientation prior to the beginning of classes | I enrolled in an orientation course as part of my course schedule during my first academic term | I was not aware of a college orientation | I was unable to participate in orientation due to scheduling or other issues |
| WITC | 18% | 55% | 2% | 7% | 17% |
| Small College Cohort | 11% | 47% | 10% | 15% | 18% |
| National | 14% | 45% | 7% | 16% | 17% |

| | | |
|--|-----|-----|
| 15. During my first academic year at this college, I participated in a <u>first-year experience</u> program. | Yes | No |
| WITC | 10% | 90% |

| | | |
|----------------------|-----|-----|
| Small College Cohort | 21% | 79% |
| National | 18% | 82% |

| | | |
|---|-----|-----|
| 16. During my first academic year at this college, I participated in an <u>organized learning community</u> (a formal program in which groups of students take two or more classes together). | Yes | No |
| WITC | 16% | 84% |
| Small College Cohort | 11% | 89% |
| National | 9% | 91% |

| | | |
|---|-----|-----|
| 17. During my first academic year at this college, I participated in a <u>student success course</u> (a course that teaches the skills needed to succeed in college). | Yes | No |
| WITC | 13% | 87% |
| Small College Cohort | 33% | 67% |
| National | 29% | 71% |

| | | | | |
|--|---|---|--|------|
| 18. I was <u>told</u> that I should enroll in a developmental/remedial course (also referred to as Basic Skills, College Prep, etc.) in my first academic term at this college, and I... | Did enroll in <u>more than one</u> of these courses | Did enroll in <u>one</u> of these courses | Did not enroll in any of these courses | N.A. |
| WITC | 5% | 15% | 21% | 59% |
| Small College Cohort | 14% | 21% | 18% | 47% |
| National | 14% | 21% | 17% | 48% |

| | | | | |
|--|--|---|---|---|
| 19. During the current academic term at this college, my instructors clearly explained a class attendance policy that specified how many classes I could miss without penalty. | <u>All</u> of my instructors explained a class attendance policy | <u>Most</u> of my instructors explained a class attendance policy | <u>Some</u> of my instructors explained a class attendance policy | <u>None</u> of my instructors explained a class attendance policy |
| WITC | 78% | 8% | 8% | 6% |
| Small College Cohort | 78% | 13% | 6% | 2% |
| National | 78% | 14% | 6% | 2% |

| | | | |
|--|-----|-----|---|
| 20. Before the end of my first academic term at this college, an advisor helped me develop an academic plan (a personalized plan with a defined sequence of courses for completing a college certificate or degree and/or for transferring to a 4-year college or university). | Yes | No | I'm still in my first term; I have not yet developed an academic plan |
| WITC | 38% | 33% | 29% |
| Small College Cohort | 53% | 31% | 16% |
| National | 50% | 36% | 15% |

| | | | |
|--|-----|-----|------|
| 21. Someone at this college contacts me if I am struggling with my studies to help me get the assistance I need. | Yes | No | N.A. |
| WITC | 31% | 32% | 37% |
| Small College Cohort | 26% | 44% | 30% |
| National | 21% | 50% | 29% |

| | | | | | |
|--|-------|-------------------------|---------------------|---------------------|--------------------------|
| 22. During the current academic year at this college, I participated in supplemental instruction/supplemental learning (extra class sessions with the instructor or an experienced student). | Never | Less than 1 time a week | 1 to 2 times a week | 3 to 4 times a week | More than 4 times a week |
| WITC | 81% | 11% | 6% | 1% | <1% |
| Small College Cohort | 78% | 11% | 8% | 1% | 1% |
| National | 79% | 11% | 8% | 1% | 1% |

| | | | | |
|---|-------------|--------|------------------|------------|
| 23. How likely is it that the following issues would cause you to withdraw from class or from WITC? | Very likely | Likely | Some-what likely | Not likely |
| <i>a. Working full-time</i> | | | | |
| WITC | 15% | 15% | 22% | 48% |
| Small College Cohort | 20% | 17% | 21% | 42% |
| National | 21% | 18% | 21% | 40% |
| <i>b. Caring for dependents</i> | | | | |
| WITC | 9% | 12% | 23% | 56% |
| Small College Cohort | 12% | 15% | 21% | 52% |
| National | 12% | 15% | 21% | 52% |
| <i>c. Academically unprepared</i> | | | | |
| WITC | 5% | 6% | 20% | 68% |
| Small College Cohort | 7% | 11% | 23% | 58% |
| National | 8% | 12% | 24% | 56% |

| 23. How likely is it that the following issues would cause you to withdraw from class or from WITC? | Very likely | Likely | Some-what likely | Not likely |
|---|-------------|--------|------------------|------------|
| <i>d. Lack of finances</i> | | | | |
| WITC | 27% | 15% | 22% | 36% |
| Small College Cohort | 26% | 18% | 23% | 33% |
| National | 27% | 18% | 22% | 33% |
| <i>e. Transfer to a 4-year college or university</i> | | | | |
| WITC | 7% | 8% | 16% | 69% |
| Small College Cohort | 22% | 15% | 18% | 46% |
| National | 25% | 16% | 18% | 40% |

| 24. How supportive are your friends of your attending WITC? | Extremely | Quite a bit | Somewhat | Not very |
|---|-----------|-------------|----------|----------|
| WITC | 60% | 26% | 11% | 4% |
| Small College Cohort | 52% | 29% | 14% | 4% |
| National | 51% | 30% | 15% | 4% |

| 25. How supportive is your immediate family of your attending WITC? | Extremely | Quite a bit | Somewhat | Not Very |
|---|-----------|-------------|----------|----------|
| WITC | 73% | 20% | 4% | 2% |
| Small College Cohort | 68% | 21% | 8% | 2% |
| National | 67% | 21% | 9% | 3% |

| 26. Indicate which of the following are your reasons/goals for attending WITC. | Yes | No |
|--|-----|-----|
| <i>a. Complete a certificate program</i> | | |
| WITC | 60% | 40% |
| Small College Cohort | 46% | 54% |
| National | 42% | 58% |
| <i>b. Obtain an associate degree</i> | | |
| WITC | 75% | 25% |
| Small College Cohort | 78% | 22% |
| National | 77% | 23% |
| <i>c. Transfer to a 4-year college or university</i> | | |
| WITC | 36% | 64% |
| Small College Cohort | 59% | 41% |
| National | 67% | 33% |
| <i>d. Obtain or update job-related skills</i> | | |
| WITC | 70% | 30% |
| Small College Cohort | 63% | 37% |
| National | 60% | 40% |

| 26. Indicate which of the following are your reasons/goals for attending WITC. | Yes | No |
|--|-----|-----|
| <i>e. Change careers</i> | | |
| WITC | 39% | 61% |
| Small College Cohort | 34% | 66% |
| National | 33% | 67% |
| <i>f. Self-improvement/personal enjoyment</i> | | |
| WITC | 70% | 30% |
| Small College Cohort | 67% | 33% |
| National | 66% | 34% |

| 27. Indicate which of the following are sources you use to pay your tuition at WITC. | Major source | Minor source | Not a source |
|--|--------------|--------------|--------------|
| <i>a. My own income/savings</i> | | | |
| WITC | 36% | 41% | 23% |
| Small College Cohort | 32% | 33% | 34% |
| National | 36% | 32% | 32% |
| <i>b. Income/savings from family</i> | | | |
| WITC | 16% | 16% | 68% |
| Small College Cohort | 23% | 20% | 58% |
| National | 26% | 19% | 55% |
| <i>c. Employer contributions</i> | | | |
| WITC | 5% | 9% | 86% |
| Small College Cohort | 6% | 7% | 88% |
| National | 5% | 7% | 88% |
| <i>d. Active military or veteran benefits</i> | | | |
| WITC | 4% | 1% | 95% |
| Small College Cohort | 5% | 2% | 93% |
| National | 5% | 2% | 93% |
| <i>e. Grants</i> | | | |
| WITC | 40% | 12% | 48% |
| Small College Cohort | 37% | 12% | 51% |
| National | 33% | 11% | 56% |
| <i>f. Scholarships</i> | | | |
| WITC | 14% | 26% | 63% |
| Small College Cohort | 22% | 16% | 62% |
| National | 17% | 13% | 70% |
| <i>g. Student loans (bank, etc.)</i> | | | |
| WITC | 42% | 10% | 48% |
| Small College Cohort | 26% | 9% | 65% |
| National | 22% | 9% | 70% |
| <i>h. Public assistance</i> | | | |
| WITC | 4% | 4% | 92% |
| Small College Cohort | 7% | 5% | 88% |
| National | 7% | 5% | 88% |

| 28. When do you plan to take classes at WITC again? | I will accomplish my goal(s) during this academic term and will not be returning | I have no current plan to return | Within the next 12 months | Uncertain |
|---|--|----------------------------------|---------------------------|-----------|
| WITC | 11% | 7% | 64% | 17% |
| Small College Cohort | 18% | 7% | 59% | 17% |
| National | 17% | 6% | 61% | 16% |

| 29. At WITC, in what range is your overall college grade average (GPA)? | A | B | C | D or lower | Do not have a GPA at WITC |
|---|-----|-----|-----|------------|---------------------------|
| WITC | 38% | 48% | 9% | 3% | 3% |
| Small College Cohort | 29% | 46% | 19% | 2% | 4% |
| National | 28% | 45% | 19% | 2% | 5% |

| 30. In what range was your overall high school grade average (GPA)? | A | B | C | D or lower | I do not remember |
|---|-----|-----|-----|------------|-------------------|
| WITC | 21% | 41% | 25% | 4% | 9% |
| Small College Cohort | 27% | 41% | 20% | 4% | 8% |
| National | 26% | 42% | 20% | 4% | 8% |

| 31. When do you most frequently take classes at WITC? | Day Classes (morning or afternoon) | Evening classes | Weekend classes |
|---|---------------------------------------|-----------------|-----------------|
| WITC | 96% | 4% | 0% |
| Small College Cohort | 82% | 18% | <1% |
| National | 79% | 20% | <1% |

| 32. During the current academic term, how many classes are you taking... | None | 1 | 2 | 3 | 4 | 5 or more |
|--|------|-----|-----|-----|-----|-----------|
| a. Face-to-face (a class in which all instruction is face-to-face in a classroom) | | | | | | |
| WITC | <1% | 17% | 25% | 21% | 19% | 19% |
| Small College Cohort | 4% | 21% | 26% | 21% | 15% | 14% |
| National | 2% | 19% | 28% | 23% | 16% | 11% |
| b. Online (a class in which all instruction is online) | | | | | | |
| WITC | 73% | 17% | 6% | 2% | 1% | 1% |
| Small College Cohort | 64% | 23% | 8% | 3% | 1% | 1% |
| National | 71% | 19% | 6% | 2% | 1% | 1% |

| | | | | | | |
|---|------|-----|----|----|----|-----------|
| 32. During the current academic term, how many classes are you taking... | None | 1 | 2 | 3 | 4 | 5 or more |
| <i>c. Hybrid (a class that is a mixture of face-to-face and online instruction)</i> | | | | | | |
| WITC | 77% | 14% | 5% | 1% | 1% | 1% |
| Small College Cohort | 73% | 17% | 6% | 3% | 1% | 1% |
| National | 77% | 14% | 5% | 2% | 1% | 1% |

| | | | | | | |
|---|------|--------------|---------------|---------------|---------------|-----------------|
| 33. How many TOTAL credit hours have you earned at WITC, not counting the courses you are currently taking this term? | None | 1-14 credits | 15-29 credits | 30-44 credits | 45-60 credits | Over 60 credits |
| WITC | 14% | 42% | 21% | 12% | 7% | 5% |
| Small College Cohort | 10% | 32% | 25% | 14% | 12% | 9% |
| National | 10% | 33% | 23% | 14% | 12% | 9% |

| | | | | | |
|--|--------------------------------|---------------------------------|--|---|---|
| 34. How many <u>total</u> academic terms have you been enrolled at this college? | This is my first academic term | This is my second academic term | This is my third or fourth academic term | This is my fifth or sixth academic term | I have been enrolled more than six academic terms |
| WITC | 30% | 36% | 23% | 7% | 4% |
| Small College Cohort | 21% | 31% | 29% | 12% | 7% |
| National | 19% | 29% | 29% | 13% | 9% |

| | | |
|--|-----|----|
| 35. Would you recommend WITC to a friend or family member? | Yes | No |
| WITC | 96% | 4% |
| Small College Cohort | 93% | 7% |
| National | 94% | 6% |

| | | | | |
|--|-----------|------|------|------|
| 36. How would you evaluate your entire educational experience at WITC? | Excellent | Good | Fair | Poor |
| WITC | 53% | 41% | 5% | 1% |
| Small College Cohort | 35% | 51% | 12% | 1% |
| National | 34% | 52% | 12% | 1% |

| | | |
|--|-----|-----|
| 37. Do you have children who live with you and depend on you for their care? | Yes | No |
| WITC | 30% | 70% |
| Small College Cohort | 25% | 75% |
| National | 22% | 78% |

| 38. Mark your age group | Under 18 | 18-19 | 20-21 | 22-24 | 25-29 | 30-39 | 40-49 | 50-64 | 65+ |
|---|----------|-------|-------|-------|-------|-------|-------|-------|-----|
| WITC | 0% | 27% | 21% | 15% | 15% | 14% | 6% | 2% | <1% |
| Small College Cohort - CCSSE does not provide data for this question. | | | | | | | | | |
| National - CCSSE does not provide data for this question. | | | | | | | | | |

| 39. Your gender identity: | Man | Woman | Other | I prefer not to respond |
|---|-----|-------|-------|-------------------------|
| WITC | 45% | 54% | <1% | 1% |
| Small College Cohort - CCSSE does not provide data for this question. | | | | |
| National - CCSSE does not provide data for this question. | | | | |

| 40. Are you married? | Yes | No |
|----------------------|-----|-----|
| WITC | 18% | 82% |
| Small College Cohort | 18% | 82% |
| National | 16% | 84% |

| 41. Is English your native (first) language? | Yes | No |
|--|-----|-----|
| WITC | 96% | 4% |
| Small College Cohort | 89% | 11% |
| National | 83% | 17% |

| 42. Are you a current or former member of the U.S. Armed Forces, Reserves, or National Guard? | Yes | No |
|---|-----|-----|
| WITC | 5% | 95% |
| Small College Cohort | 5% | 95% |
| National | 5% | 95% |

| 43. Are you an international student or non-resident alien? | Yes | No |
|---|-----|------|
| WITC | <1% | 100% |
| Small College Cohort - CCSSE does not provide data for this question. | | |
| National - CCSSE does not provide data for this question. | | |

| 44. Are you a student-athlete on a team sponsored by WITC's athletics department? | Yes | No |
|---|-----|------|
| WITC | <1% | 100% |
| Small College Cohort | 5% | 95% |
| National | 3% | 97% |

| 45. What is your racial or ethnic identification? | American Indian or Alaskan Native | Asian | Black or African American | Hispanic or Latino | Native Hawaiian | Pacific Islander (non-Native Hawaiian) | White | Other | I prefer not to respond |
|---|-----------------------------------|-------|---------------------------|--------------------|-----------------|--|-------|-------|-------------------------|
| WITC | 4% | 2% | 1% | 1% | <1% | <1% | 92% | 1% | 2% |
| Small College Cohort - CCSSE does not provide data for this question. | | | | | | | | | |
| National - CCSSE does not provide data for this question. | | | | | | | | | |

| 46. What is the highest academic credential you have earned? | None | GED | High School diploma | Vocational/technical certificate | Associate's degree | Bachelor's degree | Master's/doctoral/professional degree |
|--|------|-----|---------------------|----------------------------------|--------------------|-------------------|---------------------------------------|
| WITC | 1% | 5% | 66% | 17% | 4% | 5% | <1% |
| Small College Cohort | 4% | 5% | 69% | 10% | 8% | 4% | 1% |
| National | 3% | 5% | 71% | 8% | 8% | 5% | 1% |

| 47. Who in your family has attended at least some college? | Mother | Father | Brother/Sister | Child | Spouse/Partner | Legal Guardian | No one |
|--|--------|--------|----------------|-------|----------------|----------------|--------|
| WITC | 61% | 50% | 54% | 3% | 17% | 1% | 10% |
| Small College Cohort | 55% | 42% | 51% | 5% | 15% | 2% | 15% |
| National | 53% | 42% | 51% | 4% | 14% | 2% | 15% |

2017 Special Focus Questions

| 1. Since your first academic term at WITC, have you met (in person or online) with an academic advisor before registering for classes each term? | Yes, before every academic term | Yes, before some academic terms, but not all | No |
|--|---------------------------------|--|-----|
| WITC | 44% | 28% | 28% |
| Small College Cohort | 62% | 22% | 17% |
| National | 50% | 29% | 21% |

| 2. Prior to registering for classes before this academic term at WITC, were you required to meet (in person or online) with an academic advisor? | Yes | No |
|--|-----|-----|
| WITC | 43% | 57% |
| Small College Cohort | 60% | 40% |
| National | 50% | 50% |

| 3. During this academic term at WITC, how many times have you met (in person or online) with an academic advisor? | None | Once | Twice | More than twice |
|---|------|------|-------|-----------------|
| WITC | 29% | 31% | 19% | 21% |
| Small College Cohort | 21% | 27% | 24% | 29% |
| National | 26% | 29% | 22% | 23% |

| 4. During this academic term at WITC, if you have met (in person or online) with an academic advisor more than once, did you meet with the same academic advisor each time? | Yes | No | I have only met with an academic advisor once this academic term at WITC | I have not met with an academic advisor during this academic term at WITC |
|---|-----|-----|--|---|
| WITC | 37% | 19% | 24% | 20% |
| Small College Cohort | 42% | 25% | 18% | 14% |
| National | 32% | 29% | 20% | 19% |

| 5. During your most recent meeting (in person or online) with an academic advisor during this academic term at WITC, he or she discussed when your next advising session should be. | Yes | No | I have not met with an academic advisor during this academic term at WITC |
|---|-----|-----|---|
| WITC | 23% | 52% | 24% |
| Small College Cohort | 30% | 54% | 15% |
| National | 27% | 53% | 20% |

| 6. I review progress toward my academic goals at WITC each time I meet (in person or online) with an academic advisor. | Strongly agree | Agree | Disagree | Strongly disagree | I have not met with an academic advisor at WITC |
|--|----------------|-------|----------|-------------------|---|
| WITC | 26% | 41% | 11% | 4% | 19% |
| Small College Cohort | 31% | 41% | 13% | 5% | 10% |
| National | 29% | 40% | 13% | 5% | 13% |

| 7. The first time I met with an academic advisor at WITC was... | In person, one-on-one | In person, in a group setting | Online | I have not met (in person or online) with an academic advisor at WITC |
|---|-----------------------|-------------------------------|--------|---|
| WITC | 77% | 8% | 2% | 12% |
| Small College Cohort | 81% | 8% | 3% | 8% |
| National | 79% | 8% | 3% | 10% |

| 8. How long did your first academic advising session at WITC last? | 15 minutes or less | 16-30 minutes | More than 30 minutes | I do not remember | I have not met (in person or online) with an academic advisor at WITC |
|--|--------------------|---------------|----------------------|-------------------|---|
| WITC | 27% | 38% | 14% | 7% | 13% |
| Small College Cohort | 29% | 42% | 15% | 7% | 8% |
| National | 29% | 40% | 14% | 7% | 10% |

| 9. If you were told you needed to take a developmental education class at WITC, did an academic advisor clearly explain why? | Yes | No | I was not told I needed to take developmental education classes at WITC | I have not met (in person or online) with an academic advisor at WITC |
|--|-----|-----|---|---|
| WITC | 19% | 8% | 60% | 13% |
| Small College Cohort | 30% | 11% | 52% | 8% |
| National | 28% | 12% | 51% | 10% |

| 10. Has an academic advisor at WITC helped you select a program, major, or pathway of study? | Yes, prior to starting classes my first academic term at WITC | Yes, but after classes began my first academic term at WITC | No | I have not met (in person or online) with an academic advisor at WITC |
|--|---|---|-----|---|
| WITC | 35% | 7% | 46% | 12% |
| Small College Cohort | 45% | 12% | 35% | 7% |
| National | 40% | 14% | 37% | 10% |

| 11. Prior to meeting (in person or online) with an academic advisor at WITC, I knew what I wanted my major to be. | Strongly agree | Agree | Disagree | Strongly disagree | I have not met with an academic advisor at WITC |
|---|----------------|-------|----------|-------------------|---|
| WITC | 57% | 21% | 6% | 3% | 13% |
| Small College Cohort | 48% | 26% | 13% | 5% | 7% |
| National | 44% | 27% | 14% | 6% | 9% |

| 12. After first meeting (in person or online) with an academic advisor at WITC, my understanding of how long it would take to complete my academic goals... | Changed to a shorter amount of time | Changed to a longer amount of time | Did not change | I do not remember | I have not met with an academic advisor at WITC |
|---|-------------------------------------|------------------------------------|----------------|-------------------|---|
| WITC | 9% | 28% | 40% | 9% | 15% |
| Small College Cohort | 12% | 28% | 38% | 14% | 8% |
| National | 12% | 29% | 34% | 15% | 10% |

| | | | | | |
|---|----------------|-------|----------|-------------------|---|
| 13. An academic advisor at WITC has clearly explained to me which classes I need to take in order to reach my academic goals. | Strongly agree | Agree | Disagree | Strongly disagree | I have not met (in person or online) with an academic advisor at WITC |
| WITC | 50% | 30% | 5% | 1% | 14% |
| Small College Cohort | 48% | 32% | 8% | 3% | 8% |
| National | 43% | 32% | 10% | 4% | 11% |

| | | | | | |
|---|----------------|-------|----------|-------------------|---|
| 14. At WITC, an academic advisor has provided me with information about academic support services (tutoring services, writing center, math skill lab, etc.) | Strongly agree | Agree | Disagree | Strongly disagree | I have not met (in person or online) with an academic advisor at WITC |
| WITC | 37% | 37% | 9% | 3% | 14% |
| Small College Cohort | 35% | 37% | 15% | 5% | 8% |
| National | 31% | 35% | 17% | 6% | 11% |

| | | | | | |
|--|----------------|-------|----------|-------------------|---|
| 15. An academic advisor at WITC has talked with me about my commitments outside of school (work, children, dependents, etc.) to help me figure out how many courses to take. | Strongly agree | Agree | Disagree | Strongly disagree | I have not met (in person or online) with an academic advisor at WITC |
| WITC | 20% | 38% | 22% | 5% | 15% |
| Small College Cohort | 21% | 31% | 27% | 12% | 8% |
| National | 18% | 28% | 29% | 14% | 11% |

| | | | | |
|---|----------------|-------|----------|-------------------|
| 16. At WITC, an academic advisor has discussed my career interests with me. | Strongly agree | Agree | Disagree | Strongly disagree |
| WITC | 30% | 43% | 18% | 9% |
| Small College Cohort | 32% | 38% | 19% | 11% |
| National | 28% | 37% | 21% | 14% |

| 17. At WITC, an academic advisor has discussed with me regional employment opportunities based on my career interests. | Strongly agree | Agree | Disagree | Strongly disagree | I have not discussed employment opportunities with an academic advisor at WITC |
|--|----------------|-------|----------|-------------------|--|
| WITC | 16% | 28% | 26% | 6% | 25% |
| Small College Cohort | 14% | 23% | 32% | 13% | 18% |
| National | 11% | 19% | 33% | 16% | 20% |

| 18. At WITC, what has been your <u>main</u> source of academic advising (help with academic goal-setting, planning, course recommendations, graduation requirements, etc.)? | Instructors | Academic advisors (not instructors) | Friends, family, or other students | College website | Other college materials |
|---|-------------|-------------------------------------|------------------------------------|-----------------|-------------------------|
| WITC | 48% | 19% | 24% | 6% | 3% |
| Small College Cohort | 35% | 34% | 21% | 7% | 4% |
| National | 29% | 32% | 24% | 10% | 5% |

| 19. Has an academic advisor come to one of your classes at WITC to speak with you about your academic goals and planning? | Yes | No | I do not know |
|---|-----|-----|---------------|
| WITC | 22% | 62% | 16% |
| Small College Cohort | 22% | 67% | 11% |
| National | 19% | 71% | 11% |

| 20. Have any of your instructors at WITC recommended that you meet (in person or online) with an academic advisor? | Yes | No |
|--|-----|-----|
| WITC | 30% | 70% |
| Small College Cohort | 40% | 60% |
| National | 39% | 61% |