

# Northwood Tech First in Training Solutions Continuing Education

Professional Development / Life & Leisure

**Fall 2021**

**page 9**

**Wills & Trusts**

**page 12**

**Hatha Yoga**

**page 26**

**CPR/AED/Basic**

**First Aid**

**page 28**

**Cad Basics**



**Northwood**  
Technical College

ASHLAND • NEW RICHMOND • RICE LAKE • SUPERIOR  
BALSAM LAKE • HAYWARD • LADYSMITH

[NORTHWOODTECH.EDU](http://NORTHWOODTECH.EDU)

# NORTHWOOD TECH Continuing Education

## PROFESSIONAL DEVELOPMENT / LIFE & LEISURE

Welcome to Northwood Tech's Fall 2021 Continuing Education catalog. Inside you will find a variety of informative and exciting Professional Development and Life & Leisure courses, designed to enhance your learning experience. We are pleased to continue to provide these learning opportunities for you! Courses are offered in a variety of instructional formats, including:

### On Site

These courses are offered in person at a variety of campus locations throughout the district, providing face to face instruction and interaction with the instructor.

### Online Live

These courses are offered during a specific time period that can be accessed from your home or office computer or tablet using free web-conferencing software. You will receive log-in information about 3 days prior to class through the email address you provide when you register. Your computer must have a reliable internet connection, microphone and camera. You can interact with the teacher during the class.

### Online

These courses are offered via the Internet and accessed by using a web browser. You can access the course at any time. Offline supervised tests/exams at specified sites may be conducted in conjunction with these courses.

## It's Easy to Register!

ONLINE | PHONE | MAIL

*For complete registration information, please see page 35.*

You have likely heard that Wisconsin Indianhead Technical College has become **Northwood Technical College** as of August 2021.

Celebrate our new name with us as we continue to provide quality education and experiences for you!

Check out our new identifiers below and learn more about these changes and more at [northwoodtech.edu/name-change](https://northwoodtech.edu/name-change)



(New Logo)



(New Mascot)



(New Seal)

**LIFE & LEISURE pgs 4 – 12**

- Art
- Computers & Technology for Home
- Driver Safety
- Engine and Engine Repair
- Family & Consumer Services
- Financial Management
- Language
- Group Dynamics
- Lifelong Learning
- Manufacturing & Transportation
- Motorcycles/Mopeds
- Physical Education
- Wellness
- Writing

**BUSINESS, FINANCE & LEADERSHIP pgs 13 - 20**

- Business
- Computers & Technology
- Healthcare
- Insurance
- Insurance CE
- Leadership & Supervision
- Real Estate

**EARLY CHILDHOOD EDUCATION pgs 20 - 21**

- Early Childhood Education

**HEALTH SCIENCE pgs 21 - 22**

- Community Based Residential Facility

**HUMAN SERVICES pgs 22 - 23**

- Caregiving

**LAW, PUBLIC SAFETY & SECURITY pgs 24 - 28**

- Emergency Medical Services

**MANUFACTURING, TECHNOLOGY & ENGINEERING pgs 28 - 29**

- Manufacturing
- Safety

**TRANSPORTATION, DISTRIBUTION & LOGISTICS pg 30**

- Driver Training
- Engine & Engine Repair

**FEATURED CERTIFICATES pg 32**

**CUSTOMIZED TRAINING SOLUTIONS pg 33**

**YOUR INVESTMENT, THEIR FUTURE**



**The Northwood Tech Foundation Mission** is to encourage the success and achievement of Northwood Tech students, staff, faculty and alumni. For information on how you can take part in this mission & support students in your area, visit: [northwoodtech.edu/foundation](http://northwoodtech.edu/foundation)



## LIFE & LEISURE

### Art

#### Drawing the Garden's Harvest

60-815-605

In this three-session, weekly drawing class, explore the art elements of line, negative space, shape, and color. For inspiration you may use real vegetables or fruits, your own photos, and/or images from garden catalogs. Work with various materials including pencil, water-soluble drawing pen, watercolor pencils, watercolor with waterproof drawing pen, and/or (regular) color pencil. The instructor will demonstrate various drawing techniques and you'll have the opportunity to draw during class and share your work. The instructor will email you details about each upcoming session weekly and will recommend which art supplies to use. The complete supply list is at [www.NorthwoodTech.edu/supplies](http://www.NorthwoodTech.edu/supplies).

65626 Sep 13-Sep 27 M 3p-4:30p \$27.50/\$18.30  
*Online Live Diana Randolph*

#### Introduction to Guitar

Master basic guitar skills and become the musician you've always wanted to be. Ed2Go is the online delivery platform for this class, and all tech support and class assistance is handled directly through Ed2Go. Register and pay via Ed2Go at [northwoodtech.edu/continuing-education-and-training/professional-development/online-classes](http://northwoodtech.edu/continuing-education-and-training/professional-development/online-classes)

N/A Start Dates: Sep 15 | Oct 13 | Nov 17 \$100  
*Online Ed2Go Staff*

# Facebook

It's where we're at!



Up-to-date info on new classes and events!  
 @NorthwoodTechContinuingEducation

#### Introduction to Interior Design

Explore a career in interior design as you learn how to transform any room into a beautiful and functional space. Ed2Go is the online delivery platform for this class, and all tech support and class assistance is handled directly through Ed2Go. Register and pay via Ed2Go at [northwoodtech.edu/continuing-education-and-training/professional-development/online-classes](http://northwoodtech.edu/continuing-education-and-training/professional-development/online-classes)

N/A Start Dates: Sep 15 | Oct 13 | Nov 17 \$115  
*Online Ed2Go Staff*

#### Mastering Your Digital SLR Camera

Take your photography to the next level by learning how to master lenses, apertures, shutter speed, exposure settings, and more on your digital SLR camera. Ed2Go is the online delivery platform for this class, and all tech support and class assistance is handled directly through Ed2Go. Register and pay via Ed2Go at [northwoodtech.edu/continuing-education-and-training/professional-development/online-classes](http://northwoodtech.edu/continuing-education-and-training/professional-development/online-classes)

N/A Start Dates: Sep 15 | Oct 13 | Nov 17 \$100  
*Online Ed2Go Staff*

#### Pastel Painting: Focal Point

60-815-600

In this three-session, weekly class, paint along with the instructor as she shares many examples and shows how to layer dry pastel sticks (not oil pastels) on various types of pastel paper. Use your own landscape photos for inspiration and interpret them by selecting a focal point/center of interest. Then practice how to emphasize that area using many pastel painting techniques demonstrated by the instructor. Some drawing experience is helpful. The supply list may be viewed at [www.NorthwoodTech.edu/supplies](http://www.NorthwoodTech.edu/supplies).

65627 Oct 14-Oct 28 Th 3p-4:30p \$27.50/\$18.30  
*Online Live Diana Randolph*

### Computers & Technology for Home

#### Backing Up Your Computer

60-107-602

There are two types of hard drives: those about to fail, and those that will fail eventually. Plan accordingly. It goes without saying that backing up data is a sensible thing to get into the habit of doing. Not only does it make sense in case your laptop is stolen, or your hard disk fails, but it also means that you have more options for recovery should your

computer become infected. In this course you will learn many options available for backing up your data, and we will discuss the pros and cons of each method.

**65778** Oct 26 T 1p-3p \$16/\$11.40  
*Online Live Sara Reimann*

## Beginning Excel

60-103-602

You will be amazed at what Excel can do for you! Learn how to create worksheets for work and personal use. Understand the basics of navigating through the cells, formatting and setting up a spreadsheet for maximum efficiency. You will see how easy it is to have your numbers calculated for you in just seconds and how to sort through long, ponderous lists with absolute ease. There will be plenty of time to practice and ask questions. Basic computer skills required.

**65765** Nov 2-Nov 16 T 5:30p-7:30p \$39/\$25.20  
*Online Live Melissa Turngren*

## Beginning PowerPoint

60-103-602

In this introductory class you will get practice using the basic functions of Microsoft PowerPoint. Creating, editing and saving a slide presentation will be practiced along with simple functions that will help create professional looking presentations using graphics, text modifications, animation and other special effects. There will be plenty of time to practice and ask questions. Basic computer skills required.

**65764** Dec 2-Dec 9 TTh 4p-6p \$39/\$25.20  
*Online Live Allison Scheffel*

## Beginning Word

60-103-602

In this introductory class you will get practice using the basic functions of Microsoft Word. Creating, editing and saving a document will be practiced along with simple functions that will help create professional looking resumes, letters and other common documents. There will be plenty of time to practice and ask questions. Basic computer skills required.

**65762** Oct 5-Oct 12 TTh 4p-6p \$39/\$25.20  
*Online Live Allison Scheffel*

## Creating a Budget with Excel

60-107-602

Learn to use Microsoft Excel or Google Sheets spreadsheets for your personal use to create a family budget, track expenses, or create a list of personal items. The advantage of an electronic

spreadsheet is that the content can be easily edited and updated to reflect changing financial conditions. Basic computer skills required.

**65772** Oct 6 W 1p-3p \$16/\$11.40  
*Online Live Sara Reimann*

## Facebook Basics

60-107-602

Whether you have been using Facebook for years, or you are a newbie, there is always something to learn. In this class you will learn not only navigating around Facebook but also very important privacy and security settings as well as Facebook marketplace buying and selling.

**65774** Oct 13 W 1p-3p \$16/\$11.40  
*Online Live Sara Reimann*

## Intermediate Excel

60-103-602

This intermediate MS Excel class will pick up where the beginner class ends. The instructor will present topics and guide you through skills gathered at the request of students in the beginner class. This class will be offered via our free BlueJeans web conference software.

**65766** Nov 30-Dec 14 T 5:30p-7:30p \$39/\$25.20  
*Online Live Melissa Turngren*



We offer training for

# Firefighters

## INTERESTED?

Contact Carolyn

Carolyn.Anderson@northwoodtech.edu

715.246.1819

### Intermediate Word

60-103-602

This intermediate Microsoft Word class will pick up where our beginner class ends. We will cover specific skills requested by class members (gathered from the beginner class). This class will be offered via our free BlueJeans web conference software.

65763 Oct 21-Oct 28 TTh 4p-6p \$39/\$25.20  
*Online Live Allison Scheffel*

### Introduction to iPhone/iPad

60-107-602

Learn to use Apple's iPhone or iPad. Interact with your device, access different features, set up and manage your account, and access the Internet. Understand the capabilities and limitations of your device and why it may or may not replace your computer. Gain basic troubleshooting tips for when something goes awry. Have your phone or iPad fully charged at start of class and have your charging cable handy.

65769 Sep 27-Sep 28 MT 1p-3p \$27.50/\$18.30  
*Online Live Sara Reimann*

### iPhone/iPad Next Steps

60-107-602

Let's go beyond the basics with your Apple iPad and iPhone. There's so much more that you can use. We'll discuss handy apps that can make your life easier; be ready to share any favorites of yours. Have your iPad or iPhone fully charged at start of class and have your charging cable handy.

65770 Oct 4-Oct 5 MT 1p-3p \$27.50/\$18.30  
*Online Live Sara Reimann*

### Keeping Track of Passwords

60-107-602

A good password is easy to remember, but difficult to guess, both for people who know you, and for anonymous password-crackers. We all have so many different passwords to keep track of nowadays. Rather than taking the dangerous shortcuts of either using the same password for everything, or else writing passwords down and keeping them near your computer, this course will teach you tips to make it easier to create unique, memorable passwords for every different application. You will learn how to create good passwords, and what tools can help you store your passwords safely.

65779 Nov 1-Nov 2 MT 1p-3p \$27.50/\$18.30  
*Online Live Sara Reimann*

### Mac Basics

60-107-602

Your Mac includes macOS, the world's most advanced desktop operating system. macOS includes features and apps you'll use each day, and it enables your Mac, iPhone, iPad, iPod touch, and Apple Watch to work together. During this class, you will learn about the desktop, customizing your Mac, Apple ID and iCloud, using your Apple devices together, explore other Apps, find music and apps, create files, protect your data, explore the Mac hardware and much more!

65777 Oct 25 M 1p-3p \$16/\$11.40  
*Online Live Sara Reimann*



## Fill Your Talent Pipeline

### 5 Critical Factors to Attract the Modern Employee

Over 80% of people would be willing to take a pay cut to work for a company with a better culture. And 46% of Americans are passive candidates: never checking out the job boards but open to the right opportunity. So why don't more great companies take advantage of this and promote their culture to passive candidates? Dust off your marketing hat and learn the five top factors that are hurting your recruitment efforts (and how you can fix them).

Sep 16 | Oct 5

Pg 13

### Using All Google Has to Offer

60-107-602

What is the use of Google? Google offers Gmail, Chrome, Maps, Drive, Spreadsheets, Youtube, Calendar...and much more! With Google, you can upload and store all of your files online. You can then share these files with others and access them from any computer, smartphone, or tablet. With Google you can quickly and easily get answers on your smartphone or computer. Come and find out more about using Google has Everything. Please bring your laptop or device to class.

65780 Nov 15-Nov 16 MT 1p-3p \$27.50/\$18.30  
*Online Live Sara Reimann*

### Windows 10

60-103-602

Learn the essential components of Windows 10. Become familiar with how to customize the Start Menu and work with the mouse, touchscreen, and keyboard. Explore Apps, create and modify user account settings, and understand file storage including photo management.

65761 Sep 28-Sep 30 TTh 4p-6p \$27.50/\$18.30  
*Online Live Allison Scheffel*

## Driver Safety

### Driver Education - Theory

42-812-401

Students gain awareness of the driving task and the responsibilities that accompany it. They demonstrate knowledge of traffic laws and regulations that help provide safe and efficient patterns. Students understand the impact that natural forces and conditions have concerning driving. They learn to identify hazardous conditions and react appropriately to avoid or minimize problems. Students develop an attitude of safe, courteous, and defensive driving.

**\*\*Please note:** This is an online class with specific assignments to be completed each of the six weeks. Assignments open each Monday morning, and students can work on their assignments anytime throughout the week but must have the assignments completed by Sunday evening.

64326	Sep 20-Oct 31	24/7	\$115
	<i>Online</i>		<i>Jordee Reimer</i>
64327	Sep 20-Oct 31	24/7	\$115
	<i>Online</i>		<i>Jordee Reimer</i>
64328	Sep 20-Oct 31	24/7	\$115
	<i>Online</i>		<i>Jordee Reimer</i>
64329	Nov 8-Dec 19	24/7	\$115
	<i>Online</i>		<i>Jordee Reimer</i>

64330	Nov 8-Dec 19	24/7	\$115
	<i>Online</i>		<i>Jordee Reimer</i>
64331	Nov 8-Dec 19	24/7	\$115
	<i>Online</i>		<i>Jordee Reimer</i>

### Traffic Safety for Point Reduction

42-812-404

Participants of the Traffic Safety course will examine their driving behavior and review traffic laws and penalties. Emphasis will be placed on ways to drive responsibly. The Traffic Safety class will show participants how to develop a change plan to reduce their risk of traffic violations and crashes. Students who successfully complete this Traffic Safety class may be eligible to receive a three-point reduction from their driving record. This class also meets the requirements for anyone that has received a "Failure to Yield Right of Way Violation" 2011 Wisconsin Act 173-346.18.

64961	Oct 9-Oct 16	Sa 8a-2p	\$74.30/\$32
	<i>Superior: 111</i>		<i>Timothy Smith</i>
64960	Nov 6-Nov 13	Sa 8a-2p	\$74.30/\$32
	<i>Ashland: 203</i>		<i>Timothy Smith</i>
64962	Nov 10-Nov 18	WTh 6p-9p	\$74.30/\$32
	<i>Rice Lake: 221</i>		<i>Clifford Parr</i>
64959	Nov 29-Dec 8	MW 6p-9p	\$74.30/\$32
	<i>New Richmond: 1602</i>		<i>Davin Miller</i>



# Welding

Pgs 10 - 11 | Pg 29

## Engine & Engine Repair

### Auto Maintenance for Women **NEW!**

60-404-610

Do you feel prepared and safe in the case that you get a flat tire or your battery fails? Learn how to plan ahead for unknowns on the road and understand how some basic auto maintenance skills can apply to most vehicles. In this safe, team-oriented environment, learn basic safety skills, how to change oil, use jumper cables, jack and change a tire, and check fluids. Please wear close-toed shoes and clothing which can become stained.

65656 Sep 28-Oct 7 TTh 6:30p-8:30p \$50.50/\$32.10  
*Superior: 117 Todd Asanovich*

## Family & Consumer Services

### Budgeting 101

60-308-601

Budgeting can be difficult in the best of times and it's even harder now. In this short course you will learn to examine your spending "triggers" and begin to recognize them before they lead to unnecessary spending. You'll examine your current income level, create a manageable budget, and begin to determine ways you can get ahead to ease stress-related financial concerns. We may not solve all problems, but we'll likely make improvements. Using Excel to create your budget is a bonus, but not necessary; hand-written methods will also be discussed.

65767 Oct 12- 14 TTh 5:30p-7:30p \$27.50/\$18.30  
*Online Live Melissa Turngren*

### Stream Live Tv **NEW!**

60-308-601

Thinking about getting rid of another monthly bill? TV lovers have more budget-friendly options these days than they may realize. This class will teach you how to ditch cable and satellite TV - and save a bundle - without giving up your favorite shows or features. Netflix for old TV Shows and Movies, Hulu to watch LIVE TV, Amazon Prime Video and much much more! Learn how to use the devices you have to watch your favorite shows, rent/buy movies, view photos on your flatscreen TV and much more! This is a VERY fun class that fills up fast.

65773 Oct 12 T 1p-4p \$27.50/\$18.30  
*Online Live Sara Reimann*

65781 Nov 29 M 1p-4p \$27.50/\$18.30  
*Online Live Sara Reimann*

### Digital Photo Organization for Android

60-305-625

If your digital photo collections are a mess, the good news is that software and online services now have excellent tools for helping you organized your images fast. The goal is to be able to find and share the photos you love without a headache. Learn the concepts and techniques behind efficient photo management, photo editing, organizing, backup, and sharing. This class is for Android/PC users. Please have your devices ready to go for class.

65776 Oct 19 T 1p-3p \$16/\$11.40  
*Online Live Sara Reimann*

## The 5 C's | Pg 17

This isn't your father's workforce anymore! Many industries cannot find enough help, workers are demanding new flexibilities, young adults are grossly unprepared, and the Boomers that are still working aren't too interested in adapting to change. In the Five C's, Brad Gingras outlines how each generation views or prefers to work while identifying trends that are shaking up the workforce: Communication, change, choice, culture (including workforce culture), and centered (individualistic) preferences.





**Digital Photo Organization for Apple**

60-305-625

If your digital photo collections are a mess, the good news is that software and online services now have excellent tools for helping you organized your images fast. The goal is to be able to find and share the photos you love without a headache. Learn the concepts and techniques behind efficient photo management, photo editing, organizing, backup, and sharing. This class is for Apple/PC users. Please have your devices ready to go for class.

65775 Oct 18 M 1p-3p \$16/\$11.40  
*Online Live Sara Reimann*

**Financial Management****ABC's & Ds Medicare/Consumer**

42-162-409

Are you nearing Medicare age? Do you have questions about Medicare options and enrollment? Are you responsible for someone else's healthcare decisions? If so, this short seminar is for you. Join us to gain a fundamental understanding of the elements of Part A (Hospital Insurance), Part B (Medical Insurance), Part C (Medicare Advantage), and Part D (Medicare Drug Coverage) as it relates to consumers. Learn about initial enrollment options and additional enrollment periods as they pertain to the Medicare Plan types.

65655 Oct 5 T 6p-8p \$11.55/\$4.50  
*Online Live Dan Conrad*

**Wills and Trusts**

42-102-404

Understand what your current estate plan will achieve for you, how to avoid probate of your assets, and reduce or eliminate taxes to the extent possible. You will also learn how to effectively pass on your assets in the way that you desire.

65677 Oct 11 M 1p-3p \$11.55/\$4.50  
*Online Live Susan Miley*

**Language****American Sign Language Level 1**

42-533-400

Gain a greater appreciation for the language and culture. Learn to communicate on a basic level using common phrases, questions, negatives, the manual alphabet, signs of greeting, family signs,

pronouns, and numbers. Instruction will also include information on facial affect, sentence structure, yes/no responses, pluralizing, proper terminology related to deafness, and much more. This class will be taught by a Deaf instructor without voice. Suggested book for use in class: Learn American Sign Language - Complete Beginner's Guide (800+ Signs) by James W Guido.

65701 Sep 20-Oct 25 M 6p-9p \$67.95/\$4.50  
*Online Live Cheryl Blue*

**American Sign Language Level 2**

42-533-400

Continue your exploration of sign language and culture. Your instructor will provide additional vocabulary, help you polish existing signing skills, and continue with instruction on other aspects of sign language structure. Develop conversational skills and learn to construct dialogues based on common situations. This class will be taught by a Deaf instructor without voice. Suggested book for use in class: Learn American Sign Language - Complete Beginner's Guide (800+ Signs) by James W Guido..

65702 Nov 15-Dec 20 M 6p-9p \$67.95/\$4.50  
*Online Live Cheryl Blue*

**Sign Language - Beginning**

42-533-400

Learn to communicate on a basic level using common phrases, questions, negatives, the manual alphabet, signs of greeting, family signs, pronouns, and numbers. Instruction will also include information on facial affect, sentence structure, yes/no responses, pluralizing, proper terminology related to deafness, and much more. By communicating with deaf guests, you will gain a greater appreciation for their language and culture. Please bring pen and paper.

65699 Oct 4-Nov 8 M 6:30p-9:30p \$67.95/\$4.50  
*Rice Lake: 221 Betsy Wolford Phillips*



## Sign Language - Intermediate

42-533-400

This intermediate course is designed for students who have completed a beginning sign language class or those who possess a demonstrated knowledge of sign language. Your instructor will provide additional vocabulary, help you polish existing signing skills, and continue with instruction on other aspects of sign language structure. Develop conversational skills and learn to construct dialogues based on common situations. Deaf guests will be available for communication.

65700 Oct 5-Nov 9 T 6:30p-9:30p \$67.95/\$4.50  
Rice Lake: 221 Betsy Wolford Phillips

## Spanish II

60-802-600

Spanish II Part 1: This conversational course employs a wide variety of learning activities that build Spanish comprehension, vocabulary, and oral and writing skills in a highly interactive environment, in which individual, comprehensive participation is the norm. Learning materials are also highly varied, including total physical response, videos, the internet, written exercises, weekly "homework" assignments, and topical research and oral reporting. Individual requests for content related to professional, business, travel or other purposes are purposefully integrated into sessions. Instruction is nearly totally in Spanish. Participants having at least a basic skill level will be able to meet participation expectations and make personal advancement more rewarding. Hasta la vista! This class is offered through our web conferencing BlueJeans software.

65693 Sep 13-Dec 13 M 6p-7:30p \$131/\$80.40  
Online Live Gary Valley

## Group Dynamics

### AODA - 17 and Under

42-818-405

The mission of Wisconsin's Underage Alcohol and Other Drugs Education Program is to promote the well-being of underage violators by educating them about the risks and consequences of alcohol and other drug use and helping them to develop the skills and a personal action plan to avoid future problems.

65137 Dec 6-Dec 15 MW 6p-9:30p \$62.05/\$12.70  
New Richmond: 1208 Michael Kastens

## Lifelong Learning

### ACT Prep

42-890-415

The Wisconsin Department of Public Instruction is entering into a partnership with ACT® Inc. to comprehensively assess Wisconsin high school students. Prepare for the assessments with professional instruction specializing in grammar usage review, time maximization on reading comprehension passages, math, science, and test taking strategies. In session one, students will focus on English usage and mechanics including punctuation, grammar, word usage, and sentence structure; plus rhetorical skills including style, strategy, and organization. In session two, they will review four types of reading passages including Literary, Humanities, Natural Science, and Social Studies. Assessed skills will include recognizing cause/effect, main ideas and details, sequence, compare/contrast, interpreting words and phrases in context, making generalizations and inferences, and drawing conclusions. In session three, students will practice algebra, functions, geometry, statistics and probability, integrating essential skills, numbers/quantity, modeling, and trigonometry. Session four will prepare students for the recall of scientific content including interpretation of data, scientific investigation; plus evaluation of models, inferences, and experimental results.

65724 Oct 11-Oct 14 MTWTh 6p-8p \$32.70/\$4.50  
Online Live Northwood Tech Faculty

## Manufacturing & Technology

### Artistic Welding **NEW!**

60-442-600

Welding: An Artistic Perspective! Do you have little or no experience with welding? Explore welding in a safe environment with a focus on its artistic possibilities. Collaborative and individual projects are encouraged. No loose clothing and hair must be tied back. Leather closed-toe shoes, jeans and 100% cotton shirt preferred.

65727 Sep 10-Sep 24 F 1p-5p \$84.75/\$57.15  
New Richmond: 1209 Casey Wagner

**Welding for Women NEW!**

60-442-600

Learn to weld in the company of other women in a relaxed, but focused environment. Just in time for the holidays, make a gift or simply treat yourself. Bring out your creativity and weld an artistic piece using horseshoes create anything from a wine or boot rack, flowers, clovers, or unique garden ornaments! We will have the supplies for you to make one piece, but if you have horseshoes or find cool ones at an upcycle store, please bring them along. The more you have, the more creative you can be. Please wear hair tied back if applicable, work boots, no loose clothing; bring safety glasses and welding helmet and jacket if you have this safety gear. If you do not own welding equipment, we will have welding jackets, hoods, and gloves at class for you to borrow. While this one day event invites women, Northwood Tech offers other welding courses to serve everyone. Your instructor will provide time during class to eat lunch, so plan to bring food with you for a break during class. All material fees are now included in total registration fee.

65787 Sep 11 Sa 12p-5p \$62.38/\$48.58  
 New Richmond: 1209 Casey Wagner

and no refund will be given. It is strongly recommended that you take the eCourse before you start your Northwood Tech Motorcycle Safety Course as you will learn valuable information that will help you with the range portion of our class. Students are expected to have some basic understanding that is provided through the online course during the Northwood Tech Motorcycle Safety Course.

64914	Sep 11-Sep 12 Rice Lake: 212	SaSu 8a-5p	\$263.45 John Wright
65320	Sep 11-Sep 12 New Richmond: 1602	SaSu 8a-5p	\$263.45 Charli King
65321	Sep 18-Sep 19 New Richmond: 1602	SaSu 8a-5p	\$263.45 John Wright
66010	Sep 18-Sep 19 Rice Lake: 401	SaSu 8a-5p	\$263.45 Matthew Fitch
65322	Sep 25-Sep 26 New Richmond: 1602	SaSu 8a-5p	\$263.45 Richard Richter
66011	Oct 2-Oct 3 Rice Lake: 401	SaSu 8a-5p	\$263.45 Ernest Kolumbus
66012	Oct 16-Oct 17 Rice Lake: 401	SaSu 8a-5p	\$263.45 John Wright

**Motorcycle/Moped**

**Motorcycle - Basic Rider 1**

42-816-400

This 16-hour course is approved by the Department of Transportation. It is designed to teach the beginner or experienced rider the safe techniques to riding a motorcycle. It consists of 6 hours of classroom and 10 hours of on-cycle instruction. After Successful completion of this class you would receive a waiver to take to the DMV that may waive you from taking the road test in order to obtain your Motorcycle Endorsement. Due to a new curriculum set by the State of Wisconsin and MSF, you are now required to take an online course prior to the start of class. The cost of this course is \$19.99 and is separate from the cost of Northwood Tech's Motorcycle course. You can register for this course at <http://msf-usa.org/students.aspx>. Once there, you click 'Enroll Now' under Basic eCourse. After you complete the online course, please make sure to print your Completion Certificate as you are required to bring the certificate to the first day of class or provide a copy of the certificate to Northwood Tech within 5-7 days of completing the Motorcycle safety course. Failure to complete the online course within the 5-7 days of completing this course will result in a Failure to Northwood Tech's Motorcycle course



CEU'S FOR  
**Caregiver**  
 PROFESSIONALS

- Sep 23 - 24 | The Teepa Snow Experience
- Sep 23 | Using Positive Approach to Care
- Sep 24 | Understanding Your Needs as a Caregiver
- Nov 18 | Resiliency in Caregiving

**Pgs 22 - 23**

## Physical Education

### Hatha Yoga

60-807-628

Hatha Yoga is a very gentle style of yoga that combines stretching (postures) with breath work and meditation to connect you to all parts of yourself. A few of the many benefits include improved flexibility, mobility, strength, circulation, relaxation, balance and energy. Yoga helps to bring awareness and trust to your body, calmness to your restless mind and joy to your spirit. Please bring your own mat, a blanket, two yoga blocks and a 6-8 foot strap. As always, please check with your physician before starting this or any other exercise class. This class will be offered online using our free BlueJeans software; you will need reliable internet service, a microphone and camera to successfully take this class.

65644	Sep 20-Oct 25 Online Live	M 9a-10a	\$39/\$25.20 Mary Jo Jirik
65645	Sep 21-Oct 12 Oct 26 Online Live	T 9a-10a T 9a-10a	\$39/\$25.20 Mary Jo Jirik
65646	Sep 22-Oct 27 Online Live	W 9a-10a	\$39/\$25.20 Mary Jo Jirik
65647	Sep 23-Oct 28 Online Live	Th 9a-10a	\$39/\$25.20 Mary Jo Jirik
65648	Nov 1-Nov 15 Nov 22-Dec 13 Online Live	M 9a-10a M 9a-10a	\$39/\$25.20 Mary Jo Jirik
65649	Nov 2-Nov 16 Nov 23-Dec 14 Online Live	T 9a-10a T 9a-10a	\$39/\$25.20 Mary Jo Jirik
65650	Nov 3-Nov 17 Nov 24-Dec 15 Online Live	W 9a-10a W 9a-10a	\$39/\$25.20 Mary Jo Jirik
65651	Nov 4-Nov 18 Online Live	Th 9a-10a	\$39/\$25.20 Mary Jo Jirik

## Wellness

### Certificate in Meditation

In this online course, you'll explore the many meditation techniques that can be used to support the mind-body connection and promote healing, health, and wellness. (8 contact hours) Ed2Go is the online delivery platform for this class, and all tech support and class assistance is handled directly through Ed2Go. Register and pay via Ed2Go at northwoodtech.edu/continuing-education-and-training/professional-development/online-classes

N/A	Start Dates: Sep 15   Oct 13   Nov 17 Online	\$68 Ed2Go Staff
-----	---	---------------------

### Lose Weight and Keep It Off

Discover how to establish a healthy approach to successful weight loss and weight maintenance for a lifetime. Ed2Go is the online delivery platform for this class, and all tech support and class assistance is handled directly through Ed2Go. Register and pay via Ed2Go at northwoodtech.edu/continuing-education-and-training/professional-development/online-classes

N/A	Start Dates: Sep 15   Oct 13   Nov 17 Online	\$100 Ed2Go Staff
-----	---	----------------------

### Marriage and Relationships: Keys to Success

Getting married is just the first step! Learn how to build a solid foundation for a healthy partnership that will last far beyond "I do." Ed2Go is the online delivery platform for this class, and all tech support and class assistance is handled directly through Ed2Go. Register and pay via Ed2Go at northwoodtech.edu/continuing-education-and-training/professional-development/online-classes

N/A	Start Dates: Sep 15   Oct 13   Nov 17 Online	\$115 Ed2Go Staff
-----	---	----------------------

## Writing

### Advanced Fiction Writing

Explore advanced fiction writing techniques with a published novelist. Ed2Go is the online delivery platform for this class, and all tech support and class assistance is handled directly through Ed2Go. Register and pay via Ed2Go at northwoodtech.edu/continuing-education-and-training/professional-development/online-classes

N/A	Start Dates: Sep 15   Oct 13   Nov 17 Online	\$100 Ed2Go Staff
-----	---	----------------------

### Publish! In Literary Journals

60-801-601

With over 4,000 literary journals in print and online in North America, there are terrific opportunities to get your work published. Join in this workshop with an experienced writer and editor to find your niche. Create opportunities for success. Discover ways to find journals, structure your advantages, and use online submission systems, plus other ideas for getting published.

65652	Nov 8 Online Live	M 6p-8p	\$16/\$11.40 Catherine Young
-------	----------------------	---------	---------------------------------

# BUSINESS, FINANCE & LEADERSHIP

## Business

### Grammar Refresher

Develop your English grammar skills and take your writing and speaking to the next level of excellence in this course. Ed2Go is the online delivery platform for this class, and all tech support and class assistance is handled directly through Ed2Go. Register and pay via Ed2Go at [northwoodtech.edu/continuing-education-and-training/professional-development/online-classes](http://northwoodtech.edu/continuing-education-and-training/professional-development/online-classes)

N/A Start Dates: Sep 15 | Oct 13 | Nov 17 \$100  
*Online Ed2Go Staff*

### Learn to Buy and Sell on eBay

Auction pros teach you how to work from home or earn extra income by buying and selling goods online. Ed2Go is the online delivery platform for this class, and all tech support and class assistance is handled directly through Ed2Go. Register and pay via Ed2Go at [northwoodtech.edu/continuing-education-and-training/professional-development/online-classes](http://northwoodtech.edu/continuing-education-and-training/professional-development/online-classes)

N/A Start Dates: Sep 15 | Oct 13 | Nov 17 \$100  
*Online Ed2Go Staff*

### Fill Your Talent Pipeline: 5 Critical Factors to Attract the Modern Employee **NEW!**

47-196-422

Over 80% of people would be willing to take a pay cut to work for a company with a better culture. And 46% of Americans are passive candidates: never checking out the job boards but open to the right opportunity. So why don't more great companies take advantage of this and promote their culture to passive candidates? Dust off your marketing hat and learn the five top factors that are hurting your recruitment efforts (and how you can fix them). Choose from on-site option with networking lunch to follow (included in registration fee), or online live/webinar. Registration deadline for in-person classes is 7 business days prior to class.

66359 Sep 16 Th 8a-12p \$49/\$34.90  
*New Richmond: Conference Ctr Justin Vajko*

66360 Sep 16 Th 8a-12p \$35/\$20.90  
*Online Live Justin Vajko*

66362 Oct 5 T 8a:30-11:30p \$49/\$34.90  
*Rice Lake: Conference Ctr Justin Vajko*

66363 Oct 5 T 8a:30-11:30p \$35/\$20.90  
*Online Live Justin Vajko*

### Start and Operate Your Own Home-Based Business

This course will teach you how to develop the motivation, discipline, and creativity to be your own boss and start your own home-based business. Ed2Go is the online delivery platform for this class, and all tech support and class assistance is handled directly through Ed2Go. Register and pay via Ed2Go at [northwoodtech.edu/continuing-education-and-training/professional-development/online-classes](http://northwoodtech.edu/continuing-education-and-training/professional-development/online-classes)

N/A Start Dates: Sep 15 | Oct 13 | Nov 17 \$115  
*Online Ed2Go Staff*

### Start Your Your Small Business

Stop dreaming and learn how to start your own successful small business. Ed2Go is the online delivery platform for this class, and all tech support and class assistance is handled directly through Ed2Go. Register and pay via Ed2Go at [northwoodtech.edu/continuing-education-and-training/professional-development/online-classes](http://northwoodtech.edu/continuing-education-and-training/professional-development/online-classes)

N/A Start Dates: Sep 15 | Oct 13 | Nov 17 \$115  
*Online Ed2Go Staff*

## EMERGENCY MEDICAL SERVICES TRAINING

Contact Northwood Tech for all your EMS training needs.



Search courses online at [northwoodtech.edu](http://northwoodtech.edu) or contact:

**Tim Salo, EMS Director**  
[timothy.salo@northwoodtech.edu](mailto:timothy.salo@northwoodtech.edu)

## Computers & Technology

### Blogging and Podcasting for Beginners

Learn how to create your very own blog and podcast using the tools that you already have available on your computer. Ed2Go is the online delivery platform for this class, and all tech support and class assistance is handled directly through Ed2Go. Register and pay via Ed2Go at [northwoodtech.edu/continuing-education-and-training/professional-development/online-classes](http://northwoodtech.edu/continuing-education-and-training/professional-development/online-classes)

N/A Start Dates: Sep 15 | Oct 13 | Nov 17 \$100  
*Online Ed2Go Staff*

### Designing Effective Websites

Learn powerful graphic design techniques and build websites that are both attractive and wickedly effective. Ed2Go is the online delivery platform for this class, and all tech support and class assistance is handled directly through Ed2Go. Register and pay via Ed2Go at [northwoodtech.edu/continuing-education-and-training/professional-development/online-classes](http://northwoodtech.edu/continuing-education-and-training/professional-development/online-classes)

N/A Start Dates: Sep 15 | Oct 13 | Nov 17 \$115  
*Online Ed2Go Staff*

### Introduction to InDesign CC

Learn how to use Adobe InDesign CC to design and create professional-quality letterhead, brochures, forms, eBooks, business materials and more. Ed2Go is the online delivery platform for this class, and all tech support and class assistance is handled directly through Ed2Go. Register and pay via Ed2Go at [northwoodtech.edu/continuing-education-and-training/professional-development/online-classes](http://northwoodtech.edu/continuing-education-and-training/professional-development/online-classes)

N/A Start Dates: Sep 15 | Oct 13 | Nov 17 \$115  
*Online Ed2Go Staff*

### Quickbooks Beginner

47-103-439

Learn the essentials of QuickBooks Desktop software. Learning outcomes include creating a new company file, understanding the flow of customers and vendors, reviewing banking activities, and exploring reports. Payroll is not part of this class. Students will watch and learn from the instructor and may choose to follow along with their current QuickBooks Desktop software. QuickBooks Online and QuickBooks for Mac are not compatible for this course.

65756 Sep 23-Oct 14 Th 9a-11a \$32.70/\$4.50  
*Online Live Maryann Ledin*

### Using Social Media in Business

Learn how to use the five most popular social media platforms: Facebook, Twitter, LinkedIn, Pinterest, and Instagram, to grow and promote your business. Ed2Go is the online delivery platform for this class, and all tech support and class assistance is handled directly through Ed2Go. Register and pay via Ed2Go at [northwoodtech.edu/continuing-education-and-training/professional-development/online-classes](http://northwoodtech.edu/continuing-education-and-training/professional-development/online-classes)

N/A Start Dates: Sep 15 | Oct 13 | Nov 17 \$115  
*Online Ed2Go Staff*

## Healthcare

### Spanish for Medical Professionals

Learn medical Spanish quickly and easily, honing your basic conversational skills and mastering key healthcare words and phrases. Ed2Go is the online delivery platform for this class, and all tech support and class assistance is handled directly through Ed2Go. Register and pay via Ed2Go at [northwoodtech.edu/continuing-education-and-training/professional-development/online-classes](http://northwoodtech.edu/continuing-education-and-training/professional-development/online-classes)

N/A Start Dates: Sep 15 | Oct 13 | Nov 17 \$115  
*Online Ed2Go Staff*



Stay **connected**, stay **informed**  
 with our biweekly e-newsletter.

Don't miss out! Sign up today!

[bit.ly/northwoodtechcenews](http://bit.ly/northwoodtechcenews)

## Insurance

### Insurance: Principles/Laws & Ethics

47-162-425

This course is designed to meet the Section A, eight-hour, pre-licensing requirement. This includes the areas of the principles of insurance, general Wisconsin insurance laws, and ethics. You are required to purchase your books at the Northwood Tech bookstore before class.

65704 Sep 13 M 8:30a-5:30p \$79/\$50.80  
*Online Live* *Rodney Schultz*

### Insurance: Property

47-162-428

This course is designed to meet the 20-hour requirement for pre-licensing education in the area of property insurance. Prerequisite: You must take the 8-hour Principles Law & Ethics course to apply for your license. If it is past a year since having the laws course and you are taking additional pre-licensing classes, the OCI requires you take the class again before testing. You are required to purchase the textbook at the Northwood Tech bookstore before class.

65712 Sep 14 T 8:30a-5:30p \$95/\$52.70  
 Sep 15 W 8:30a-12:30p  
*Online Live* *Rodney Schultz*

65716 Nov 9 T 8:30a-5:30p \$95/\$52.70  
 Nov 10 W 8:30a-12:30p  
*Online Live* *Rodney Schultz*

### Insurance: Casualty

47-162-429

This course is designed to meet the 20-hour requirement for pre-licensing education in the area of casualty insurance. Prerequisite: You must take the 8-hour Principles Law & Ethics course to apply for your license. If it is past a year since having the laws course and you are taking additional pre-licensing classes, the OCI requires you take the class again before testing. You are required to purchase the textbook at the Northwood Tech bookstore before class.

65713 Sep 15 W 1:30p-5:30p \$95/\$52.70  
 Sep 16 Th 8:30a-5:30p  
*Online Live* *Rodney Schultz*

65717 Nov 10 W 1:30p-5:30p \$95/\$52.70  
 Nov 11 Th 8:30a-5:30p  
*Online Live* *Rodney Schultz*

### Insurance: Accident and Health

47-162-426

This course is designed to meet the 20-hour requirement for pre-licensing education in the area of accident and health insurance. Prerequisite: You must take the 8-hour Principles Law & Ethics course to apply for your license. If it is past a year since having the laws course and you are taking additional pre-licensing classes, the OCI requires you take the class again before testing. You are required to purchase the textbook at the Northwood Tech bookstore before class.

65714 Oct 12 T 8:30a-5:30p \$95/\$52.70  
 Oct 13 W 8:30a-12:30p  
*Online Live* *Rodney Schultz*

65718 Dec 14 T 8:30a-5:30p \$95/\$52.70  
 Dec 15 W 8:30a-12:30p  
*Online Live* *Rodney Schultz*

### Insurance: Life

47-162-427

This course is designed to meet the 20-hour requirement for pre-licensing education in the area of life insurance. Prerequisite: You must take the 8-hour Principles Law & Ethics course to apply for your license. If it is past a year since having the laws course and you are taking additional pre-licensing classes, the OCI requires you take the class again before testing. You are required to purchase the textbook at the Northwood Tech bookstore before class.

65715 Oct 13 W 1:30p-5:30p \$95/\$52.70  
 Oct 14 Th 8:30a-5:30p  
*Online Live* *Rodney Schultz*

65719 Dec 15 W 1:30p-5:30p \$95/\$52.70  
 Dec 16 Th 8:30a-5:30p  
*Online Live* *Rodney Schultz*



Auto Mechanics for

# Mechanics

Pg 30

## Insurance CE

The following courses are for licensed insurance agents and approval for continuing education applied for through Prometric.

### Ins CE: Comprehensive Estate Planning

47-162-497

Learn about estate tax planning including calculations and solutions for reducing estate tax. Discover advantages of buy-sell agreements. Understand gifting, trusts, and special planning considerations.

65673 Oct 1 F 8:30a-12:30p \$65/\$50.90  
*Online Live Brad Charles*

### Ins CE: Tax Strategies

47-162-497

Dig into life insurance tax consequences and policies along with annuities. Find out what constitutes a Modified Endowment Contract and how to use one. Discuss qualified and non-qualified retirement plans and IRAs and learn about tax-favored health accounts.

65674 Oct 1 F 1p-5p \$65/\$50.90  
*Online Live Brad Charles*

### Ins CE: Estate Planning

47-162-497

Medicare is a Federal health insurance program for people 65 years of age or older, under 65 with certain disabilities, and any age with end-stage renal disease (permanent kidney failure requiring dialysis or a kidney transplant).

65681 Nov 19 F 1p-5p \$65/\$50.90  
*Online Live Brad Charles*

### Ins CE: SS and Medicare

47-162-497

Social Security is a United States federal program of social insurance and benefits developed in 1935. The Social Security program's benefits include retirement income, disability income, Medicare and Medicaid, and death and survivorship benefits. Social Security is one of the largest government programs in the world, paying out hundreds of billions of dollars per year.

65680 Nov 19 F 8:30a-12:30p \$65/\$50.90  
*Online Live Brad Charles*

### Ins CE: Ethics/Health Professional

47-162-497

Society has historically high expectations of health care professionals and also accords them elevated social status. Ethical behavior based on scientific training and a moral belief system is an essential underpinning of individual trust in our health care professionals. This class will explore the origin of ethics in health care, current challenges, and draw parallels to the ethical challenges for insurance agents.

65786 Oct 28 Th 1p-5p \$65/\$50.90  
*Online Live Robert Wierman*

### Ins CE: Healthcare Issues

47-162-497

Ethical decision making and health care issues has become increasingly complex with high health care costs, end of life planning, and accelerating and diverse research and discoveries in biotechnology. The purpose of this class is to reaffirm the foundations of ethical behavior for insurance and financial professionals, and explore unique ethical issues of health costs, end of life planning and new and emerging technologies aimed at improving and extending life.

65784 Nov 4 Th 1p-5p \$65/\$50.90  
*Online Live Robert Wierman*

### Ins CE: Principles/Law & Ethics

47-162-425

See how ethics play a role in the daily operations of agents and their agencies. This course will focus on the areas of the principles of insurance and general Wisconsin insurance laws and ethics. You are required to purchase the textbook at the Northwood Tech bookstore before the start of class in order to receive CE credit.

65705 Sep 13 M 8:30a-5:30p \$79/\$50.80  
*Online Live Rodney Schultz*

65707 Oct 11 M 8:30a-5:30p \$79/\$50.80  
*Online Live Rodney Schultz*

65709 Nov 8 M 8:30a-5:30p \$79/\$50.80  
*Online Live Rodney Schultz*

65711 Dec 13 M 8:30a-5:30p \$79/\$50.80  
*Online Live Rodney Schultz*



**Ins CE: Individual Health Plan**

47-162-497

Health Plans available for individual purchase encompass a broad range of policy contracts. These include major medical, short term health plans, long term care insurance, Medicare supplement Insurance, Medicare Advantage Plans, Medicare Prescription Drug Plans, Disability Insurance, and Accidental Death and Dismemberment Insurance, among others. The purpose of this class is to review content, options and costs among these and other individual policies to gain understanding of the broad range and suitability of multiple choices in individual health plans. Agents licensed for Accident and Health Insurance are qualified to present these individual policies to their clients.

**65785** Oct 28 Th 8:30a-12:30p \$65/\$50.90  
*Online Live Robert Wierman*

**Ins CE: Social Security**

47-162-497

Social Security is a United States federal program of social insurance and benefits developed in 1935. The Social Security program's benefits include retirement income, disability income, Medicare and Medicaid, and death and survivorship benefits. Social Security is one of the largest government programs in the world, paying out hundreds of billions of dollars per year.

**65783** Nov 4 Th 8:30a-12:30p \$65/\$50.90  
*Online Live Robert Wierman*

**Leadership & Supervision**

**The 5 Cs NEW!**

47-196-421

Join us virtually and from anywhere to get current with the trends that are transforming the workforce. This isn't your father's workforce anymore! Many industries cannot find enough help, workers are demanding new flexibilities, young adults are grossly unprepared, and the Boomers that are still working aren't too interested in adapting to change. In the Five C's, Brad Gingras outlines how each generation views or prefers to work while identifying trends that are shaking up the workforce: Communication, change, choice, culture (including workforce culture), and centered (individualistic) preferences. Brad is the owner of Superior Strategies and Executive Director of Northwest Wisconsin AHEC, which inspires youth to consider healthcare careers and connects students to local employment. He has been providing career and professional development workshops, presentations, and strategic planning facilitation to thousands of professionals and youth throughout the upper Midwest. His enthusiasm, passion, and wit transform workshops creating a fun, interactive, and thought-provoking experience.

**65782** Sep 27 M 9a-11a \$29/\$21.95  
*Online Live Brad Gingras*



**Truck Driving | Class B | CDL Permit Prep**

Visit [northwoodtech.edu](http://northwoodtech.edu) or contact an Admissions Advisor to learn more at **800.243.9482**

**Practical Productivity Skills NEW!**

47-196-521

As companies are constantly challenged to do more with less, increasing individual worker productivity is a must. The Practical Workplace Productivity Skills modules are designed to give your business a competitive edge by optimizing individual performance. The training design is interactive with practical skill applications, individual and small group exercises, and real-life examples. This course includes all 4 modules, and price is discounted the individual sessions. Course offered in online live (webinar) format; you will receive log-in information and class details 2 days prior to class through the email address you provide when you register.

65792	Sep 21-Sep 30	TTh 9a-11a	\$119/\$90.80
	Online Live		Nancy Brede

**PWS-Work Productively NEW!**

47-196-447

In this Working Productively course, participants learn the importance of completing projects within specified resource parameters and time frames. Learning activities focus on prioritizing tasks, applying industry standards and practices to ensure quality work, and seeking out opportunities to increase individual productivity. Register for this module individually, or the full 4-part series Practical Productivity Skills. Offered in online live (webinar) format; you will receive log-in information and class details 2 days prior to class through the email address you provide when you register.

65793	Sep 21	T 9a-11a	\$35/\$27.95
	Online Live		Nancy Brede

**PWS-Communicate Clearly NEW!**

47-196-477

As part of the Communicate Clearly course, participants learn to be clear and concise when giving directions and presenting information in an organized format and communicate in writing using appropriate grammar, spelling, format, and technical terms, according to established writing standards. Register for this module individually, or the full 4-part series Practical Productivity Skills. Offered in online live (webinar) format; you will receive log-in information and class details 2 days prior to class through the email address you provide when you register.

65794	Sep 23	Th 9a-11a	\$35/\$27.95
	Online Live		Nancy Brede

**PWS-Listen Effectively NEW!**

47-196-479

In Listening Effectively, participants learn to listen

so that specific and complicated directions are not misunderstood or misapplied. Learning activities help participants listen so that the message can be accurately interpreted, provide feedback while listening to demonstrate active receipt of a message, and incorporate appropriate body language into the listening process. Register for this module individually, or the full 4-part series Practical Productivity Skills. Offered in online live (webinar) format; you will receive log-in information and class details 2 days prior to class through the email address you provide when you register.

65795	Sep 28	T 9a-11a	\$35/\$27.95
	Online Live		Nancy Brede

**PWS-Directions & Safety NEW!**

47-196-449

In the Following Directions and Workplace Safety course, participants learn to interpret both written and verbal instructions accurately, evaluate directions to uncover potential problems, and apply step-by-step procedures to produce a product to exact specifications. Students also learn to accept responsibility for providing their own safe environment by identifying and correcting unsafe conditions, carrying out safety procedures, and maintaining an organized, clutter free work area. Learning activities help participants evaluate safety procedures and suggest ways to improve them. Register for this module individually, or the full 4-part series Practical Productivity Skills. Offered in online live (webinar) format; you will receive log-in information and class details 2 days prior to class through the email address you provide when you register.

65796	Sep 30	Th 9a-11a	\$35/\$27.95
	Online Live		Nancy Brede

**Practical Adaptability Skills NEW!**

47-196-523

With the rapid pace of change in business today, employees need to think on their feet and adapt quickly to shifting expectations. The Practical Workplace Adaptability Skills modules help workers respond quickly to unexpected events, contribute to innovative solutions, and think creatively. The training design is interactive with practical skill applications, individual and small group exercises, and real-life examples. This course includes all 4 modules; register and receive a price break over the individual sessions. Course offered in online live (webinar) format; you will receive log-in information and class details 2 days prior to class through the email address you provide when you register.

65797	Oct 6-Oct 27	W 9a-11a	\$119/\$90.80
	Online Live		Nancy Brede

**PWS-Work Cooperatively/Teams**

**NEW!**

47-196-472

In Work Cooperatively in Teams, participants learn to work with others on a team to solve problems by identifying their responsibilities as team members, participating in group decision making, and applying the strengths and opinions of others to complete projects. Register for this module individually, or the full 4-part series Practical Adaptability Skills. Offered in online live (webinar) format; you will receive log-in information and class details 2 days prior to class through the email address you provide when you register.

65798 Oct 6 W 9a-11a \$35/\$27.95  
*Online Live Nancy Brede*

**PWS-Demonstrate Integrity** **NEW!**

47-196-484

In this course on Demonstrate Integrity, participants learn to demonstrate trustworthiness by being honest, dependable, and reliable. Learning activities help participants apply ethical standards of business and industry to workplace conduct and consistently produce high quality work. Register for this module individually, or the full 4-part series Practical Adaptability Skills. Offered in online live (webinar) format; you will receive log-in information and class details 2 days prior to class through the email address you provide when you register.

65799 Oct 13 W 9a-11a \$35/\$27.95  
*Online Live Nancy Brede*

**PWS-Positive Attitude** **NEW!**

47-196-487

As part of the Demonstrate a Positive Attitude course, participants learn to maintain control of their attitudes, accept constructive criticism in a positive manner, react to negativity in a neutral tone, volunteer for tasks, and be better prepared for changing work responsibilities. Register for this module individually, or the full 4-part series Practical Adaptability Skills. Offered in online live (webinar) format; you will receive log-in information and class details 2 days prior to class through the email address you provide when you register.

65800 Oct 20 W 9a-11a \$35/\$27.95  
*Online Live Nancy Brede*

**PWS-Adapt to Change** **NEW!**

47-196-493

In Adapt to Change, participants learn to apply a change model and its methodology to the business environment. Learning activities help partic-

ipants respond quickly to unexpected events, contribute to innovative approaches, and think creatively. Participants are encouraged to adopt a personal philosophy incorporating lifelong learning as a means of maintaining adaptability. Register for this module individually, or the full 4-part series Practical Adaptability Skills. Offered in online live (webinar) format; you will receive log-in information and class details 2 days prior to class through the email address you provide when you register.

65801 Oct 27 W 9a-11a \$35/\$27.95  
*Online Live Nancy Brede*

**Real Estate**

**Real Estate Law for Salespersons**

47-194-442

This course meets the 72 classroom hours of pre-license education required for a real estate salespersons license as required in Section 452.09(2)(a) of the Wisconsin Statutes. Completing this course will prepare you for the WI Real Estate license exam. Contents include principles of real estate, real estate law, forms, real estate business operations concepts, ethics, land use control and development, environmental concerns, and miscellaneous additional content. The required book costs approximately \$85 and is available at the Northwood Tech bookstore.

65642 Sep 14-Nov 16 TTh 6p-10p \$272.40/\$4.50  
*Online Live Steven McConnell*



**ACT Test Prep**

**Pg 10**

## RE Law for Salespersons Online

47-194-442

This course meets the 72 classroom hours of pre-license education required for a real estate salespersons license as required in Section 452.09(2)(a) of the Wisconsin Statutes. Completing this course will prepare you for the WI Real Estate license exam. Contents include principles of real estate, real estate law, forms, real estate business operations concepts, ethics, land use control and development, environmental concerns, and miscellaneous additional content. You will have one year to complete this course. Please note that regardless of the date you sign up, you will need to complete by December 18, 2021. If you are signing up closer to that date, consider waiting for the next session of classes. Upon registration, you will receive a password to enter the online REI course and will then receive your textbook and forms book via US Mail. \*This class is non-refundable. To register, email sara.dobberschutz@northwood-tech.edu

65643 Aug 23-Dec 18 24/7 \$258.30/\$4.50  
Online Ron Nyhus

# EARLY CHILDHOOD EDUCATION

## Early Childhood Education

### Child Care: Intro to Child Care Profession

47-307-461

Provides entry level knowledge and skills for individuals as they begin to or intend to care for children in group or family child care. Learners explore rules and regulations governing group and family child care and the responsibilities of child care providers. This course fulfills introductory non-credit course requirements as specified in HFS Chapters 45 and 46 for family and group day care in Wisconsin's Administrative Code. This is an online course. Learners must have a computer, plus access to the internet and Microsoft Word in order to complete the course assignments. Last day to register for this course is Nov. 3, 2021.

65483 Sep 8-Dec 8 24/7 \$166.65/\$4.50  
Online Karen Pesik

### Child Care: Profession Mod A

47-307-461

Provides entry level knowledge and skills for individuals as they begin to or intend to care for children in group or family child care. Learners explore rules and regulations governing group and family child care and the responsibilities of child care providers. This course fulfills introductory non-credit course requirements as specified in HFS Chapters 45 and 46 for family and group day care in Wisconsin's Administrative Code. This is an online course. Learners must have a computer, plus access to the internet and Microsoft Word in order to complete the course assignments. Last day to register for this course is Nov. 3, 2021.

65484 Sep 8-Dec 8 24/7 \$89.10/\$4.50  
Online Karen Pesik

### Child Care: Profession Mod B

47-307-461

Provides entry level knowledge and skills for individuals as they begin to or intend to care for children in group or family child care. Learners explore rules and regulations governing group and family child care and the responsibilities of child care providers. This course fulfills introductory non-credit course requirements as specified in HFS Chapters 45 and 46 for family and group day care in Wisconsin's Administrative Code. This is an online course. Learners must have a computer, plus access to the internet and Microsoft Word in order to complete the course assignments. Last day to register for this course is Nov. 3, 2021.

65485 Sep 8-Dec 8 24/7 \$82.05/\$4.50  
Online Karen Pesik

### Child Care: Fundamentals Infant & Toddler Care

47-307-470

Provides requirements and practices for entry level childcare providers who are or will work with infants and toddlers. Course fulfills requirements as specified by Wisconsin's State Law. Wisconsin day care regulations require that individuals working with infants and toddlers must complete infant and toddler training within six months of assuming a position. This is an online course. Learners must have a computer, plus access to the internet and Microsoft Word in order to complete the course assignments. Last day to register for this course is Nov. 3, 2021.

65487 Sep 8-Dec 8 24/7 \$75/\$4.50  
Online Karen Pesik

**Child Care: Skills and Strategies for Child Care Teacher**

47-307-462

Focuses on skills and strategies for the child care teacher with emphasis on selecting developmentally appropriate activities, planning lessons, and facilitating children's activities. This course meets Wisconsin's requirements for Child Care Teacher. Prerequisite: Introduction to the Child Care Profession. This is an online course. Learners must have a computer, plus access to the internet and Microsoft Word in order to complete the course assignments. Last day to register for this course is Nov. 3, 2021.

<b>65486</b>	Sep 8-Dec 8	24/7	\$166.65/\$4.50
	Online		Karen Pesik

**Child Care: Fundamentals of Family Child Care**

47-307-420

Provides essential information about establishing a family child care that is in accordance with Wisconsin's State Law. A toolkit is included in the cost of this class and will be provided from the instructor at class. Lunch is on your own.

<b>65323</b>	Oct 9	Sa 8:30a-3:30p	\$92.80/\$50.50
	Rice Lake: 225		Rebecca Elbert

**HEALTH SCIENCE****Community Based Residential Facility****CBRF Challenging Behaviors**

47-575-405

This course identifies causes and preventive measures of challenging behaviors, how to intervene when challenging behaviors occur, and how to document the behavior incident.

<b>65755</b>	Dec 16	Th 9a-4p	\$32.70/\$4.50
	Rice Lake: TBD		Renee Anderson

**CBRF Fire Safety Training**

47-503-432

This course is designed to instruct community-based residential facility (CBRF) operators and staff on how to prepare themselves to react effectively for staff and resident preservation in resi-

dential fires of different origins and intensities. Participants will be taught to understand the nature of fire, recognize fire hazards, learn about early warning systems and understand the use of fire extinguishers. They will be taught to focus on the evacuation needs of the residents, follow the CBRF emergency and disaster plan and how to respond well in an emergency. Participants must successfully complete this 4-hour training to meet the requirements of DHS 83.20 (2) (b) Fire Safety. Tuition includes the state registry fee.

<b>65731</b>	Oct 14	Th 5:30p-8:30p	\$38.60/\$24.50
	New Richmond: 1201		Renee Anderson

<b>65732</b>	Dec 9	Th 5:30p-8:30p	\$38.60/\$24.50
	Rice Lake: 221		Renee Anderson

**CBRF First Aid and Choking**

47-531-401

Initial training applicable to the responsibilities of CBRF caregivers designed to meet the requirements of administrative rule DHS 83 for CBRF's in the area of 1st aid and choking. The student will be taught how to handle life-threatening emergencies which also includes how to alleviate choking. Tuition includes the state registry fee.

<b>65751</b>	Oct 13	W 1p-5p	\$38.60/\$24.50
	Rice Lake: 221		Bambi Forcey

<b>65739</b>	Nov 13	Sa 9a-1p	\$38.60/\$24.50
	New Richmond: 1602		Sara Oratch

<b>65749</b>	Dec 18	Sa 9a-1p	\$38.60/\$24.50
	Rice Lake: 225		Sara Oratch

**Stream Live TV**

Oct 12 | Online Live

**Pg 8**

**CBRF Medications**

47-575-401

Initial training applicable to the responsibilities of CBRF caregivers designed to meet the requirements of administrative rule HFS 83 for CBRF's in the area of medication administration and documentation. The learner will be taught general categories of medications, effects and side effects, documentation, proper administration, legal issues of controlled substances and the proper procedure for handling medication errors. Successful completion of this course meets the requirements of administrative rule DHS 83 for CBRF in the area of Medication Administration and documentation. Tuition includes the state registry fee.

65734	Oct 5-Oct 6	TW 9a-5p	\$73.85/\$24.50
	<i>New Richmond: 1602</i>		<i>Renee Anderson</i>
65733	Nov 2-Nov 3	TW 9a-5p	\$73.85/\$24.50
	<i>Rice Lake: 221</i>		<i>Renee Anderson</i>

**CBRF Resident's Rights**

47-575-403

This course covers respect for and promotion of resident rights. Participants learn how to report violations of residents rights.

65754	Dec 2	Th 9a-4p	\$32.70/\$4.50
	<i>Rice Lake: TBD</i>		<i>Renee Anderson</i>

**CBRF Standard Precautions Training**

47-531-479

This class will teach a person how to handle potential exposure to bloodborne pathogens. You will learn about standard precautions and why they are important in your work. You will understand how bloodborne diseases and other communicable diseases spread from person to person, how to prevent the spread of communicable diseases and learn what to do during and after an exposure incident. Participants must successfully complete this two-hour training to meet the CBRF training requirements of CH DHS 83.20 (2)(a) Standard Precautions. Tuition includes the state registry fee.

65752	Oct 13	W 6p-8p	\$31.55/\$24.50
	<i>Rice Lake: 221</i>		<i>Bambi Forcey</i>
65741	Nov 13	Sa 1:30p-3:30p	\$31.55/\$24.50
	<i>New Richmond: 1602</i>		<i>Sara Oratch</i>
65750	Dec 18	Sa 1:30p-3:30p	\$31.55/\$24.50
	<i>Rice Lake: 225</i>		<i>Sara Oratch</i>

**HUMAN SERVICES**

**Caregiving**

**Professional Caregiver CEU: The Teepa Experience **NEW!****

47-520-405

If you're a professional caregiver in need of CEU hours and you love Teepa Snow, this is the class for you! Register for this session and you'll have access to the 3-hour Using Positive Approach to Care workshop on Thursday morning, plus the 6-hour Virtual Caregiver Conference Friday.

65820	Sep 23	Th 9a-12p	\$125/\$89.75
	Sep 24	F 9a-3p	
	<i>Online Live</i>		<i>Guest Presenter</i>

**Professional Caregiver CEU: Using Positive Approach to Care **NEW!****

47-520-405

This virtual workshop on Using Positive Approach to Care is designed for professional caregivers employed at agencies or facilities that provide care or support. The goal of this session is to help attendees manage their own attitude and behavior for improved outcomes and interactions. The session will provide learners strategies and meth-



**Practical Productivity Skills & Practical Adaptability Skills**

with Instructor Nancy Brede

Sep 21 - Sep 30 | Online Live

Oct 6 - Oct 27 | Online Live

**Pgs 18 - 19**

ods of providing assistance to individuals living with dementia using their retained abilities to promote positive outcomes in interactions. Emphasis will be placed on helping learners to approach people with dementia safely and consistently, provide verbal support and responses that reduce distress, and improve social engagement. The session will be interactive with the goal of providing knowledge, skills and attitudes that will change daily outcomes of dementia care. Log-in link will be provided 2-3 days prior to workshop.

65819 Sep 23 Th 9a-12p \$49/\$34.90  
*Online Live Guest Presenter*

**Professional Caregiver CEU: Understanding Your Needs as a Caregiver **NEW!****

47-520-405

The 2021-2022 Virtual Caregiver Conference series kicks off with the theme "Understanding Your Needs as a Caregiver." This online live/webinar event features 6 sessions presented by national dementia expert, Teepa Snow, including Why Do They Do That, Understanding Different Dementias, Understanding Yourself as a Caregiver, Pain and Dementia, and more. This webinar is available live or via recorded video link for 7 days following the live event. NOTE: This course is for those who want to enroll for Continuing Education Units (CEUs).

65818 Sep 24 F 9a-3p \$99/\$77.85  
*Online Live Teepa Snow*

**Virtual Caregiver Conference: Understanding Your Needs as a Caregiver **NEW!****

47-520-405

The 2021-2022 Virtual Caregiver Conference series kicks off with the theme "Understanding Your Needs as a Caregiver." This online live/webinar event features 6 sessions presented by national dementia expert, Teepa Snow, including Why Do They Do That, Understanding Different Dementias, Understanding Yourself as a Caregiver, Pain and Dementia, and more. This webinar is available live or via recorded video link for 7 days following the live event. NOTE: This class section is for family caregivers and/or those who **do not** need Continuing Education Units (CEUs).

65817 Sep 24 F 9a-3p \$30.65/\$9.50  
*Online Live Teepa Snow*

**Professional Caregiver CEU: Resiliency in Caregiving **NEW!****

47-520-405

The theme of this Virtual Caregiver Conference session is "Resiliency in Caregiving" and features two sessions: Refocus, Rejuvenate & Re-Energize For the Caregiver, and Building Your Caregiver Resilience Toolbox. This webinar is available live or via recorded video link for 7 days following the live event. NOTE: This course is for those who want to enroll for Continuing Education Units (CEUs). Class link will be emailed 2-3 days prior to the session.

65835 Nov 18 Th 1p-4p \$39/\$24.90  
*Online Live Guest Presenters*

**Virtual Caregiver Conference: Resiliency in Caregiving **NEW!****

47-520-405

The theme of this Virtual Caregiver Conference session is "Resiliency in Caregiving" and features two sessions: Refocus, Rejuvenate & Re-Energize For the Caregiver, and Building Your Caregiver Resilience Toolbox. This webinar is available live or via recorded video link for 7 days following the live event. NOTE: This class section is for family caregivers and/or those who **do not** need Continuing Education Units (CEUs). Class link will be emailed 2-3 days prior to the session.

65834 Nov 18 Th 1p-4p \$18.60/\$4.50  
*Online Live Guest Presenters*



**Child Care Courses**

Sept 8 - Dec 8 | Online

**Pgs 20 - 21**

# LAW, PUBLIC SAFETY & SECURITY

## Emergency Medical Services

### ACLS Provider

47-531-429

Upon successful completion of this American Heart Association class, students will be proficient in the advanced skills necessary to manage an adult patient suffering from a cardiovascular or cerebrovascular event. Certification as an ACLS Provider requires successful completion of the cognitive and psychomotor portions of the class. Textbook required.

65788	Oct 13	W 8a-12p	\$199/\$156.70
	Oct 15	F 8a-5p	
	<i>Rice Lake: 178</i>		<i>Crystal Thome</i>

### ACLS Renewal

47-531-430

This American Heart Association class will update students on the 2020 AHA guidelines plus recertify them in the skills and competencies needed to manage an adult cardiovascular or cerebrovascular emergency. Students must pass both the cognitive exam and the psychomotor portions of the class to obtain their two year recertification. Students should complete the AHA pre-test prior to class and bring a copy of their test results along with their current ACLS Provider manual to all sessions.

### ASHI Pediatric 1st Aid/CPR Renewal

47-531-417

ASHI Pediatric CPR, AED, and First Aid training program provides an ideal training solution for schools, child care providers, youth sports coaches, and others required to learn how to respond to medical emergencies involving children. This versatile program is based upon the 2015 CPR and First Aid Guidelines, Caring for Our Children, 3rd Ed; and other evidence-based treatment recommendations.

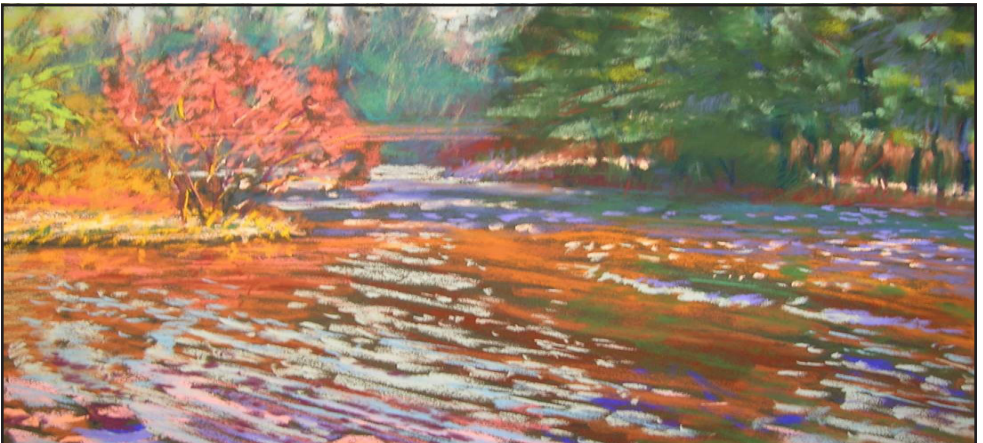
65480	Oct 20	W 6p-10p	\$36/\$21.90
	<i>Ashland: 306</i>		
65481	Oct 28	Th 6p-10p	\$36/\$21.90
	<i>Superior: 111</i>		

### ASHI Pediatric 1st Aid and CPR

47-531-420

This course will help students gain the knowledge, skills and confidence necessary to respond to and manage medical emergencies involving children and infants until more advanced help is available. A student will be taught the updated guidelines of CPR, and an automated external defibrillator (AED), and first aid for children and infants. This course will certify a student for 2 years in CPR/AED/First Aid. Students will have the option to download a book from the internet after successful completion of the course.

65479	Oct 16	Sa 8a-4p	\$44.20/\$16
	<i>Superior: 136</i>		
65478	Nov 13	Sa 8a-4p	\$44.20/\$16
	<i>Ashland: 3</i>		



# Love Art?

Explore the beautiful and magical world of drawing and painting with our talented instructor, Diana Randolph.

**Pg 4**



**CPR Health Care Provider - AHA**

47-531-437

The AHA for Health Care Providers Course is designed to teach the skills of CPR for victims of all ages including ventilation with a barrier device and use of an automated external defibrillator (AED), and relief of foreign-body airway obstruction (FBAO). It is intended for participants who provide health care to patients in a hospital setting and out-of-hospital settings. This course is for anyone that is required to take a health care provider course for employment. All participants who successfully complete the course, including the written examination and skill demonstrations will receive a BLS for Health Care provider completion card that will certify them for two years (credential.) Book provided at class.

65004	Sep 11	Sa 8:30a-4:30p	\$55.05/\$26.85
	<i>Rice Lake: 225</i>		<i>Judith Balog</i>
65438	Sep 11	Sa 8a-4p	\$55.05/\$26.85
	<i>Ashland: 306</i>		<i>Nicholas Sawyer</i>
65836	Sep 11	Sa 9a-5p	\$55.05/\$26.85
	<i>New Richmond: 1605</i>		<i>Nicholas Bilderback</i>
65442	Sep 14-Sep 16	TTh 6p-10p	\$55.05/\$26.85
	<i>Superior: 111</i>		<i>Thomas Renz</i>
65439	Sep 21-Sep 23	TTh 6p-10p	\$55.05/\$26.85
	<i>Ashland: 427</i>		<i>Thomas Renz</i>
65008	Sep 25	Sa 8:30a-4:30p	\$55.05/\$26.85
	<i>Hayward-Ojibwa: 106</i>		<i>Matthew Fitch</i>
65440	Oct 11-Oct 13	MW 6p-10p	\$55.05/\$26.85
	<i>Ashland: 306</i>		<i>Thomas Renz</i>
65838	Oct 13-Oct 14	WTh 6p-10p	\$55.05/\$26.85
	<i>New Richmond: 1605</i>		<i>Nicholas Bilderback</i>
65443	Oct 19-Oct 21	TTh 6p-10p	\$55.05/\$26.85
	<i>Superior: 111</i>		<i>Thomas Renz</i>
65010	Oct 26-27	TW 5:30p-9:30p	\$55.05/\$26.85
	<i>Rice Lake: 225</i>		<i>Judith Balog</i>
65441	Nov 13	Sa 8a-4p	\$55.05/\$26.85
	<i>Ashland: 306</i>		<i>Thomas Renz</i>
65444	Nov 13	Sa 8a-4p	\$55.05/\$26.85
	<i>Superior: 112</i>		<i>Thomas Renz</i>
65837	Nov 13	Sa 9a-5p	\$55.05/\$26.85
	<i>New Richmond: 1605</i>		<i>Nicholas Bilderback</i>
65839	Dec 8-Dec 9	WTh 6p-10p	\$55.05/\$26.85
	<i>New Richmond: 1605</i>		<i>Nicholas Bilderback</i>
65011	Dec 11	Sa 8:30a-4:30p	\$55.05/\$26.85
	<i>Rice Lake: 225</i>		<i>Judith Balog</i>
65445	Dec 11	Sa 8a-4p	\$55.05/\$26.85
	<i>Superior: 112</i>		<i>Thomas Renz</i>

**CPR Health Care Provider Renewal - AHA**

47-531-439

This course is intended for the biennial renewal of the CPR Healthcare Provider. Students must successfully complete skills testing on one-and two-rescuer CPR (adult, child, infant), foreign body airway obstruction (FBAO) procedures (adult, child, infant), and mask with one-way valve usage. A minimum of 84 percent must be attained on the written test. (PREREQUISITE: CPR Healthcare Provider successful completion within previous two years.)

65012	Sep 11	Sa 12:30p-4:30p	\$38/\$23.90
	<i>Rice Lake: 225</i>		<i>Judith Balog</i>
65456	Sep 14	T 6p-10p	\$38/\$23.90
	<i>Superior: 112</i>		<i>Gary Winters</i>
65447	Sep 16	Th 6p-10p	\$38/\$23.90
	<i>Ashland: 306</i>		<i>Melissa Talsma</i>
65013	Sep 25	Sa 12:30p-4:30p	\$38/\$23.90
	<i>Hayward-Ojibwa: 106</i>		<i>Matthew Fitch</i>
65448	Sep 30	Th 6p-10p	\$38/\$23.90
	<i>Ashland: 427</i>		<i>Thomas Renz</i>
65457	Oct 5	T 6p-10p	\$38/\$23.90
	<i>Superior: 111</i>		<i>Thomas Renz</i>
65449	Oct 6	W 6p-10p	\$38/\$23.90
	<i>Ashland: 306</i>		<i>Thomas Renz</i>
65842	Oct 6	W 6p-10p	\$38/\$23.90
	<i>New Richmond: 1605</i>		<i>Nicholas Bilderback</i>
65450	Oct 14	Th 6p-10p	\$38/\$23.90
	<i>Ashland: 427</i>		<i>Thomas Renz</i>
65451	Oct 25	M 6p-10p	\$38/\$23.90
	<i>Ashland: 306</i>		<i>Thomas Renz</i>
65014	Oct 27	W 5:30p-9:30p	\$38/\$23.90
	<i>Rice Lake: 225</i>		<i>Judith Balog</i>
65458	Oct 27	W 6p-10p	\$38/\$23.90
	<i>Superior: 112</i>		<i>Thomas Renz</i>
65452	Nov 2	T 6p-10p	\$38/\$23.90
	<i>Ashland: 427</i>		<i>Thomas Renz</i>
65843	Nov 4	Th 6p-10p	\$38/\$23.90
	<i>New Richmond: 1605</i>		<i>Nicholas Bilderback</i>
65459	Nov 9	T 6p-10p	\$38/\$23.90
	<i>Superior: 111</i>		<i>Thomas Renz</i>
65460	Dec 2	Th 6p-10p	\$38/\$23.90
	<i>Superior: 111</i>		<i>Thomas Renz</i>
65015	Dec 11	Sa 12:30p-4:30p	\$38/\$23.90
	<i>Rice Lake: 225</i>		<i>Judith Balog</i>
65461	Dec 13	M 6p-10p	\$38/\$23.90
	<i>Superior: 112</i>		<i>Thomas Renz</i>
65844	Dec 15	W 6p-10p	\$38/\$23.90
	<i>New Richmond: 1605</i>		<i>Nicholas Bilderback</i>
65453	Dec 16	Th 6p-10p	\$38/\$23.90
	<i>Ashland: 427</i>		<i>Thomas Renz</i>

**CPR/AED/Basic First Aid  
Renewal-ASHI**

47-531-459

This course will recertify students in CPR/AED & Basic First Aid. Students will renew their skills in CPR/AED and First Aid. **PREREQUISITE:** Students must have taken the original course within the last 2 years.

65470	Sep 8 Ashland: 306	W 6p-10p	\$36/\$21.90 Nicholas Sawyer
65474	Sep 9 Superior: 111	Th 6p-10p	\$36/\$21.90 Thomas Renz
65847	Sep 16 New Richmond: 1605	Th 6p-10p	\$36/\$21.90 Nicholas Bilderback
65471	Sep 27 Ashland: 306	M 6p-10p	\$36/\$21.90 Nicholas Sawyer
65472	Oct 7 Ashland: 306	Th 6p-10p	\$36/\$21.90 Nicholas Sawyer
65475	Oct 13 Superior: 112	W 6p-10p	\$36/\$21.90 Nicholas Sawyer
65473	Nov 11 Ashland: 427	Th 6p-10p	\$36/\$21.90 Thomas Renz
65476	Nov 11 Superior: 111	Th 6p-10p	\$36/\$21.90 Thomas Renz
65024	Nov 13 Hayward-Ojibwa: 106	Sa 8:30a-12:30p	\$36/\$21.90 Matthew Fitch
65848	Dec 2 New Richmond: 1605	Th 6p-10p	\$36/\$21.90 Nicholas Bilderback
65477	Dec 6 Superior: 112	M 6p-10p	\$36/\$21.90 Thomas Renz
65025	Dec 14 Rice Lake: 225	T 5:30p-9:30p	\$36/\$21.90 Judith Balog

**CPR/AED/Basic First Aid-ASHI**

47-531-419

This course is a combined CPR/AED/ Basic First Aid program designed specifically for laypeople. The program is good for the community and the workplace setting. This course is designed to teach people the knowledge and skills that they need to recognize emergencies and perform CPR and use an AED and perform First Aid until EMS arrives. This course will certify a person for 2 years in CPR/AED/Basic First Aid.

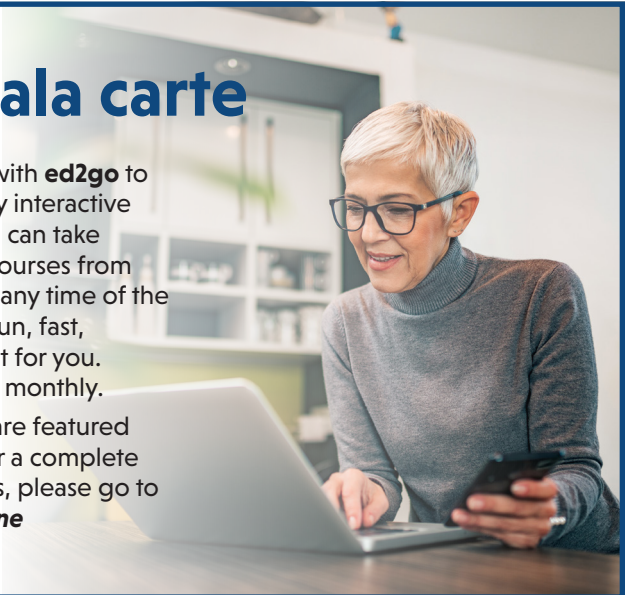
This class will cover adult/infant/child skills.

65845	Sep 28 Sep 30 New Richmond: 1605	T 6p-10p Th 6p-10p	\$44.20/\$16 Nicholas Bilderback
65846	Nov 6 Balsam Lake: 106	Sa 9a-5p	\$44.20/\$16 Nicholas Bilderback
65462	Aug 30-Sep 1 Ashland: 306	MW 6p-10p	\$44.20/\$16 Nicholas Sawyer
65463	Sep 7-Sep 9 Ashland: 306	TTh 6p-10p	\$44.20/\$16 Nicholas Sawyer
65466	Sep 11 Superior: 112	Sa 8a-4p	\$44.20/\$16 Thomas Renz
65467	Oct 2 Superior: 112	Sa 8a-4p	\$44.20/\$16 Nicholas Sawyer
65468	Oct 12-Oct 14 Superior: 111	TTh 6p-10p	\$44.20/\$16 Nicholas Sawyer
65464	Oct 16 Ashland: 427	Sa 8a-4p	\$44.20/\$16 Thomas Renz
65469	Nov 8-Nov 10 Superior: 112	MW 6p-10p	\$44.20/\$16 Thomas Renz
65022	Nov 13 Hayward-Ojibwa: 106	Sa 8:30a-4:30p	\$44.20/\$16 Matthew Fitch
65465	Nov 16-Nov 18 Ashland: 427	TTh 6p-10p	\$44.20/\$16 Thomas Renz
65023	Dec 14-Dec 15 Rice Lake: 225	TW 5:30p-9:30p	\$44.20/\$16 Judith Balog

**Education ala carte**

Northwood Tech partners with **ed2go** to offer a wide range of highly interactive non-credit courses that you can take entirely online. Complete courses from your home or office and at any time of the day or night – affordable, fun, fast, convenient, and geared just for you. New course sessions begin monthly.

A variety of Ed2Go classes are featured throughout this catalog. For a complete list of classes and start dates, please go to [bit.ly/northwoodtech\\_online](http://bit.ly/northwoodtech_online)



## Dementia Awareness & Response

**NEW!**

47-531-452

Teepa Snow, a national expert on dementia care, presents this special session designed for all public safety personnel, including those involved in fire response, law, and emergency medicine, including both direct service providers and administrative team members. In this session you will learn symptoms of dementia that impact care initiation and provision and behaviors that are indicative of dementia and may require special approaches and handling. Teepa will also share techniques that reduce distress, encourage acceptance of assistance, and improve outcomes for both patients and providers. The link to access this webinar presentation will be emailed to you 2-3 days prior to the session.

65816 Sep 23 Th 2p-4p \$21/\$13.95  
*Online Live Teepa Snow*

## Medic First Aid

47-531-404

This course will help students gain the knowledge, skills, and confidence necessary to manage a medical emergency using CPR, an automated external defibrillator (AED), and first aid until more advanced help is available. This course will certify a student for two years in CPR/AED/1st Aid. Book is provided at the class.

65020 Oct 9 Sa 8:30a-2:30p \$37.15/\$16  
*Rice Lake: 225 Judith Balog*

## Medic First Aid Recertification

47-531-405

This course will recertify students in Medic First Aid. Students will renew skills in CPR, an automated external defibrillator (AED) and first aid. **PRE-REQUISITE:** Students must have taken the original course, 47531404 Medic First Aid within the last two years. This course will renew your certification for two years. Book is provided at class.

65021 Oct 9 Sa 8:30a-12:30p \$36/\$21.90  
*Rice Lake: 225 Judith Balog*

## PALS - Pediatric Advanced Life Support (Initial Provider)

47-531-409

Upon successful completion of this American Heart Association class will certify students who pass its cognitive and psychomotor exams in the infant and child resuscitation skills necessary to recognize and treat cardiac, respiratory, and shock emergencies in the pediatric setting. Students must take the PALS pre-test prior to the first day of class and bring their results along with the PALS Provider manual to class.

65790 Oct 13 W 1p-5p \$199/\$156.70  
 Oct 14 Th 8a-5p  
*Rice Lake: 178 Crystal Thome*

## PALS-Pediatric Advanced Life Support (Renewal)

47-531-410

This American Heart Association class will update students on the 2020 AHA guidelines plus recertify them in the skills and competencies needed to manage an adult cardiovascular or cerebrovascular emergency. Students must pass both the cognitive exam and the psychomotor portions of the class to obtain their two year recertification. Students should complete the AHA pre-test prior to class and bring a copy of their test results along with their current PALS Provider manual to all sessions.

65791 Oct 14 Th 8a-5p \$159/\$130.80  
*Rice Lake: 178 Crystal Thome*

## Pediatric Medic First Aid & CPR

47-531-464

This course will help students gain the knowledge, skills and confidence necessary to respond to and manage medical emergencies involving children and infants until more advanced help is available. A student will be taught the updated guidelines of CPR, and an automated external defibrillator (AED), and first aid for children and infants. This course will certify a student for 2 years in CPR/AED/First Aid. Book is provided at class.

65016 Sep 18 Sa 8:30a-4:30p \$44.20/\$16  
*Rice Lake: 225 Judith Balog*

65017 Dec 4 Sa 8:30a-4:30p \$44.20/\$16  
*Rice Lake: 225 Instructor TBD*



## Budgeting 101 | pg 8

Examine your current income level, create a manageable budget, and begin to determine ways you can get ahead to ease stress-related financial concerns.

### Pediatric Medic First Aid & CPR Recertification

47-531-477

This course will recertify a student in Pediatric Medic First Aid & CPR. Students will renew their skills in CPR, an automated external defibrillator (AED) and first aid for infants and children. Students must have taken the original course, Pediatric Medic First Aid & CPR 47531464 within the last two years. This course will renew a student's certification for 2 years.

<b>65018</b>	Sep 18	Sa 8:30a-12:30p	\$39/\$24.90
	<i>Rice Lake: 225</i>		<i>Judith Balog</i>
<b>65019</b>	Dec 4	Sa 8:30a-12:30p	\$39/\$24.90
	<i>Rice Lake: 225</i>		<i>Instructor TBD</i>



## VIRTUAL Caregiver CONFERENCES

**Sep 24** | Understanding Your Needs as a Caregiver with Teepa Snow

**Nov 18** | Resiliency in Caregiving

For family caregivers. | Pgs 22 - 23

We are here for your Caregiving needs! View these events and more online at:

[bit.ly/northwoodtechCEevents](https://bit.ly/northwoodtechCEevents)

# MANUFACTURING, TECHNOLOGY & ENGINEERING

## Manufacturing

### CAD Basics

47-606-425

Whether you are new to AutoCAD, are trained in some previous version, or need refresher training, you will benefit from hands-on learning and practice. AutoCAD is a computer-aided drafting and design technology. Your instructor will guide you through functions including input of geometric entities, rotate, zoom, window and dimension drawing, use of layering, managing xref's, creating drawing templates, and creation of dimensional drawings. Your instructor has 30 years of CAD Technician experience in commercial and high-end residential architecture, including the use of Revit. You will need AutoCAD LT 2016 or a more updated version.

<b>65659</b>	Oct 7-Nov 11	Th 6p-8p	\$55/\$12.70
	<i>Online Live</i>		<i>William Armstrong</i>

### Machine Tool Operation

47-420-455

Gain the basic skills necessary to safely operate machine tool equipment at the beginning and intermediate levels. Through group lecture and demonstrations, learn safety, set ups, proper feeds, and speeds of machine tool equipment. An advanced lab opportunity is available for students demonstrating competency in safe operation of machines. You may be approved to work independently on selected vocational objectives with assistance from your instructor. Safety glasses required; work boots and ear protection recommended. \*Class size is temporarily limited and available only for students in need of professional development hours for workplace or plumbing apprenticeship related instruction requirements.

<b>65758</b>	Sep 30-Nov 18	Th 5:30-9:30p	\$161.55/\$34.65
	Dec 2	Th 5:30-9:30p	
	<i>Ashland: 119</i>		<i>David Olson</i>
<b>65862</b>	Oct 6-Nov 17	W 5p-9p	\$161.55/\$34.65
	Dec 1-Dec 8	W 5p-9p	
	<i>Superior: 119</i>		<i>Paul Kalin</i>

**Welding**

47-442-406

Learn oxy-fuel, shielded metal arc, gas metal arc and gas tungsten arc welding processes. This course is designed for beginner or intermediate students who wish to advance their present skills. Individual projects need prior approval from instructor. Please bring a notebook, pliers, safety glasses, work boots, goggles and welding helmet to class. This course meets the 30 hour requirement for apprentices. \*Class size is temporarily limited and available only for students in need of professional development hours for workplace or plumbing apprenticeship related instruction requirements.

65678	Sep 24-Nov 19 Dec 3-Dec 17	F 6p-9p F 6p-9p	\$193.50/\$52.50
	<i>Superior: 128</i>		<i>Paul Renman</i>
65679	Oct 1-Nov 19	F 4p-8p	\$154.80/\$42
	<i>Rice Lake: 189</i>		<i>Ric Eckstein</i>

**Beyond Welding - MIG NEW!**

47-442-406

Enhance your welding skills beyond the basics during this one day aluminum/stainless MIG workshop. Practice gas metal arc welding in a state-of-the-art welding lab. Learn advanced techniques while understanding theory and safety, metallurgy, distortion control, heat treatment, and machine control. Please bring a lunch, notebook, pliers, safety glasses, work boots, and welding helmet to class.

65653	Sep 18	Sa 9a-3p	\$29.03/\$7.88
	<i>New Richmond: 1209</i>		<i>Daniel Wilkinson</i>
65657	Nov 6	Sa 9a-3p	\$29.03/\$7.88
	<i>Superior: 128</i>		<i>John Palmer</i>

**Beyond Welding - TIG NEW!**

47-442-406

Enhance your welding skills beyond the basics during this one day aluminum/stainless MIG workshop. Practice gas metal arc welding in a state-of-the-art welding lab. Learn advanced techniques while understanding theory and safety, metallurgy, distortion control, heat treatment, and machine control. Please bring a lunch, notebook, pliers, safety glasses, work boots, and welding helmet to class.

65658	Oct 16	Sa 9a-3p	\$29.03/\$7.88
	<i>Superior: 128</i>		<i>John Palmer</i>
65654	Sep 25	Sa 9a-3p	\$29.03/\$7.88
	<i>New Richmond: 1209</i>		<i>Daniel Wilkinson</i>

**Safety**

**OSHA 30 Gen Industry Part A NEW!**

47-449-425

The OSHA 30-hour General Industry Part A and Part B training is intended for supervisors and workers with some safety responsibility. Students who complete the course will receive DOL issued student course completion cards. Students must complete Part A and Part B in consecutive order to receive their OSHA card. Lunch is on your own.

65802	Sep 9-Sep 16	Th 8a-4:30p	\$199/\$142.60
	<i>Rice Lake: 241</i>		<i>Todd Larson</i>

**OSHA 30 Gen Industry Part B NEW!**

47-449-425

The OSHA 30-hour General Industry Part A and Part B training is intended for supervisors and workers with some safety responsibility. Students who complete the course will receive DOL issued student course completion cards. Students must complete Part A and Part B in consecutive order to receive their OSHA card. Lunch is on your own.

65803	Sep 30-Oct 7	Th 8a-4:30p	\$199/\$142.60
	<i>Rice Lake: 241</i>		<i>Todd Larson</i>



**Sign Language Classes**

Online Live | Sept 20 | Nov 15  
On Site | Oct 4 | Oct 5

**Pg 9**

# TRANSPORTATION, DISTRIBUTION & LOGISTICS

## Driver Training

### CDL B License - Behind the Wheel

47-458-407

The CDL Commercial Driver's License Class B course is designed to prepare students to earn a Class B License and operate straight trucks such as: short-haul delivery trucks, construction and excavating vehicles and trucks used in the sand mining, concrete, or other similar industries. Professional drivers are responsible for the safe and efficient delivery of goods. This course will prepare you for that through a driving simulator and behind-the-wheel activities. The course includes an introduction to the industry, vehicle inspections and systems overview, safe driving techniques, cargo documentation and employer/employee relations. The Class B License does not allow a driver to operate tractor-trailers or other combination vehicles. A student must have their Class B permit before starting this course.

Behind-the-Wheel Times will vary and will be determined between the instructor and the students

- 62377 Aug 23-Dec 18 M-F 7a-7:30a \$950/\$879.50  
New Richmond: Parking Lot Brian Hudson
- 65675 Aug 23-Dec 18 M-F 7a-7:30a \$950/\$879.50  
Ashland: Parking Lot Robert Miller
- 65697 Aug 23-Dec 18 M-F 7a-7:30a \$950/\$879.50  
Balsam Lake: Parking Lot  
John Murtha/Allen Jorgenson
- 62379 Aug 23-Dec 18 M-F 7a-7:30a \$950/\$879.50  
Rice Lake: Parking Lot Janine Running

### CDL Permit Prep Online

47-458-405

Are you interested in obtaining your Commercial Driver's License? Did you know that before learning how to drive a rig, you need to get a learning permit? Ensure that you are better prepared before attempting the CDL test when you visit your local DMV service center. If you prefer to learn with a schedule convenient for you, Northwood Tech also offers an online option. The online course is designed for you to progress at your own pace. Receive links to WI Commercial Driver's Manual (WI CDM), suggested readings and study aids, and sample tests which will help prepare you for the CDL Permit Exam. There are no deadlines other than you must be completed with all tests and activities before the end of the academic semester.

- 65670 Aug 23-Dec 17 24/7 \$69/\$19.65  
Online Janine Running

### Truck Driving Simulator

47-458-408

Practice or refresh your truck driving skills on a state-of-the-art driving simulator. This two hour simulated driving experience provides a highly realistic, no-risk learning environment. Choose from a library of real-world options, including terrain, hazards, weather, and breakdown scenarios, along with several shifting options.

- 65696 Aug 23-Dec 18 M-F 7a-7:30a \$119/\$111.95  
Rice Lake: 136 Janine Running

## Engine & Engine Repair

### Auto Mechanics for Mechanics **NEW!**

47-404-411

Learn component identification, basic tune-up, oil change, fuel systems, basic electrical system troubleshooting, tires and suspension and drive line maintenance. Plan to work on your own vehicle in coordination with instructor.

- 65728 Sep 1-Oct 20 W 1p-4p \$97.20/\$12.60  
Superior: 117 Todd Asanovich



# Real Estate

Real Estate courses offered in new **ONLINE** format! Learn from the comfort and safety of your own home or office.

**Pgs 19 - 20**

# FALL 2021 CALENDAR

Look inside or online at [bit.ly/northwoodtechCEevents](https://bit.ly/northwoodtechCEevents) for full descriptions and details.

- **Fill Your Talent Pipeline**  
Sep 16 | New Richmond Conference Center -OR- Online Live  
5 Critical Factors to Attract the Modern Employee.
- **Caregiver Professional Development CEU**  
Sep 23 | Online Live  
Using a Positive Approach to Dementia Care with Teepa Snow.
- **Dementia Awareness and Response for Public Safety Personnel**  
Sep 23 | Online Live  
Special presentation by Teepa Snow specifically for fire, law and emergency services professionals.
- **Virtual Caregiver Conference: Understanding Your Needs as a Caregiver**  
Sep 24 | Online Live  
Virtual Caregiver Conference for family caregivers and professionals with Teepa Snow.
- **The 5 C's**  
Sep 27 | Online Live  
Learn the trends that are transforming today's workforce.
- **Fill Your Talent Pipeline**  
Oct 5 | Rice Lake Conference Center -OR- Online Live  
5 Critical Factors to Attract the Modern Employee.
- **Virtual Caregiver Conference: Resiliency in Caregiving**  
Nov 18 | Online Live  
Virtual Caregiver Conference for family caregivers and professionals.

*Register early as events fill quickly!*

# Featured Certificates 2021

## Leadership Essentials

Technical diploma 12 credits

A series of courses to assist you in developing the skills of current and future supervisors to lead today's workforce, Leadership Essentials focuses on leading people within an organization toward strategic goals, through corporate changes, or in directing processes and procedures.

10196164	Personal Skills for Supervisors	3 credits
10196190	Leadership Development	3 credits
10196189	Team Building and Problem Solving	3 credits
10196191	Supervision	3 credits

## Dementia Care

Pathway certificate 12 credits

Gain relevant and emerging information related to dementia types, symptoms and progression. You will be provided with practical tools and strategies that promote effective communication, honor human dignity, and support the importance of advanced planning. You will examine ways to positively impact your community through advocacy, education and other cutting edge initiatives based on coursework and experiential learning activities.

10544100	Communication of Aging	3 credits
10544105	Alzheimer's and Dementia	3 credits
10544107	Death and Dying	3 credits
10544111	Legal and Financial Issues of Aging	3 credits

## Business Graphics Certificate

Technical certificate 10 credits

This certificate provides you with the fundamental skills necessary to provide support or be a part of a team responsible for publishing, document design and preparation, web design and media development. As part of the program, you'll complete projects and compile a portfolio that incorporates the use of graphics technology and software.

10103156	Adobe Photoshop	2 credits
10106127	Desktop Publishing	2 credits
10106129	Web Technologies	3 credits
10106147	Advanced Graphics Applications	3 credits

## Group Child Care Essentials Certificate

Pathway certificate 6 credits

As a student in the Group Child Care Essentials certificate, you will gain a better understanding of the knowledge and skills required of a child care teacher. Completers of this certificate will meet the Wisconsin Department of Children and Families licensing guidelines for teachers in group child care centers and will be recognized as Wisconsin Registry Career Level 7.

10307167	ECE: Health, Safety, & Nutrition	3 credits
10307179	ECE: Child Development	3 credits

## Agricultural Business Fundamentals Certificate

Pathway certificate 12 credits

The business side of the farm operation is often times the most critical part of any farm regardless of focus. In this pathway certificate, you will learn what financial records to keep, how to market commodities, analyze financial benchmarks and assess new technology.

31080375	Farm Records and Analysis	3 credits
10094101	Farm Commodities	3 credits
31080370	Operating the Farm Business	3 credits
31080378	Emerging Trends in Agriculture	3 credits

Contact your local campus Student Services office for more information and registration details about any certificate.

*Academic support services are available.*



**NORTHWOOD TECH BUSINESS TRAINING**  
FIRST IN TRAINING SOLUTIONS



**Flexible**

**Convenient**

**Customized**

**26 fully online programs**

➤ **Solve complex problems.**

To compete in today's global marketplace, your employees need to be well trained and current. Northwood Tech can help you get there.

➤ **We start by listening.**

Northwood Tech takes the time to understand your needs. We know how to assess and design your customized training supported by business experts and instructional staff. Our experts will be there, every step of the way, keeping in touch, so you can focus on your day-to-day operations.

➤ **Delivering the solution.**

Courses meet the training and certification needs of today's workforce, with convenient locations and a variety of delivery formats to fit your schedule.

**Contact your regional associate dean today for a free, no obligation customized training assessment!**

**Dan Miller**

800.243.9482 ext. 6339

Ashland and Superior campuses including counties of Ashland, Bayfield, Douglas, Iron

Dan.Miller@northwoodtech.edu

**BJ Williams**

800.243.9482 ext. 5179

Rice Lake campus including counties of Barron, Rusk, Sawyer, Washburn

BJ.Williams@northwoodtech.edu

**Liz Pizzi**

800.243.9482 ext. 4376

New Richmond campus including counties of Burnett, Polk, St. Croix

Liz.Pizzi@northwoodtech.edu

# It's Easy to Register!

**ONLINE** Register and submit your credit card payment online at [northwoodtech.edu](http://northwoodtech.edu). Then click, 'Find a Class'.

**PHONE** Register by phone using a credit card.

**MAIL** Fill out the registration and mail it with your payment to the appropriate campus. Your registration must be received before you begin courses.

## Registration Locations

### Northwood Tech

2100 Beaser Ave, Ashland, WI 54806  
715.682.4591 ext. 3050

### Northwood Tech

1019 S. Knowles Ave, New Richmond, WI 54017  
715.246.6561 ext. 4145

### Northwood Tech

1900 College Drive, Rice Lake, WI 54868  
715.234.7082 ext. 5045

### Northwood Tech

600 N. 21<sup>st</sup> Street, Superior, WI 54880  
715.394.6677 ext. 6050

### Northwood Tech Outreach Center

400 Polk County Plaza  
Balsam Lake, WI 54810  
715.485.3044

### Northwood Tech Outreach Center

15618 Windrose Ln. Suite 106  
Hayward, WI 54843  
715.634.5167

### Northwood Tech Outreach Center

1104 Lake Avenue Suite 1  
Ladysmith, WI 54848  
715.532.3399

## REGISTRATION POLICIES

### Nondiscrimination Notice

Northwood Technical College is an equal opportunity employer/educator functioning under the affirmative action plan. Northwood Technical College does not discriminate on the basis of race, color, ancestry, religion, sex, service in the uniformed services, veteran status, national origin, age, disability, sexual orientation, marital or family status, pregnancy, pregnancy-related conditions or status in any group protected by federal, state or local law in employment, admissions or its programs, services or activities, including but not limited to admissions, treatment and access. The following person has been designated to handle inquiries regarding the nondiscrimination policies: Amanda Gohde, Director, Human Resources, Equal Opportunity/Access & Affirmative Action Officer, 1900 College Drive, Rice Lake WI 54868, 715-645-7042, [Amanda.Gohde@northwoodtech.edu](mailto:Amanda.Gohde@northwoodtech.edu).

### Accommodations for Persons With Disabilities

Reasonable accommodations for persons with disabilities will be made to ensure access to academic programs, activities, services and employment in accordance with 504 of the Rehabilitation Act of 1973, the Americans With Disabilities Act of 1990 and the Americans with Disabilities Act (ADA) Amendments Act of 2008. If accommodations are needed, the student should contact the campus Accommodations Specialist or Amanda Gohde, Director, Human Resources, Equal Opportunity/Access & Affirmative Action Officer, at 715.645.7042, 30 days in advance of needed assistance.

### Senior Fees

Northwood Technical College has implemented a waiver for students ages 62 plus. This waiver is for personal enrichment courses only (the catalog number begins with 60) and provides up to a 40% discount. (Amount varies based on material fees.) Students age must be 62 plus at the start of the term (6/1 for summer, 8/23 for fall, 12/19 for spring). Students ages 62 plus who are enrolled in professional courses (catalog number begins with 42 or 47) are still exempt from program fees under State Statute 38.24 (1)(b) and only required to pay material fees, which is approximately \$4.50 for many courses.

# ARE YOU AN ALUM?



Follow the Alumni Community on Facebook:  
[@NorthwoodTechAlumni](#)



Sign up for the e-newsletter:  
[bit.ly/northwoodtechalum](http://bit.ly/northwoodtechalum)



Make a difference; give today:  
[northwoodtech.edu/donate](http://northwoodtech.edu/donate)



# REGISTRATION FORM

For Continuing Education (non-credit) Courses

\_\_\_\_\_  
 Last Name                      First Name                      M.I.                      Former Last Name (if applicable)                      Date of Birth

Student ID No. \_\_\_\_\_ No student ID, or don't remember? Provide Social Security No. \_\_\_\_\_  
 \*Why do we ask for SSN? NorthwoodTech.edu/SSN

I've taken classes at Northwood Technical College and/or WITC in the past.

\_\_\_\_\_  
 Email address (required as email is primary method of communication by the college)

\_\_\_\_\_  
 Home phone                      Cell phone

\_\_\_\_\_  
 Home address

\_\_\_\_\_  
 City                      State                      ZIP Code

Resident of (check one):  Township  Village  City                      County                      School District

\_\_\_\_\_  
 Last high school attended:

Highest grade COMPLETED (K-12): \_\_\_\_\_

The following information is required for state and federal reporting purposes and will be kept confidential.

**Gender:**  Male  Female

**Ethnicity:** Hispanic/Latino origin?  Yes  No

**Race (check all that apply):**

- American Indian/Alaska Native
- Asian
- Black/African American
- Native Hawaiian/Other Pacific Islander
- White

**OFFICE USE ONLY**

Term \_\_\_\_\_

Received by \_\_\_\_\_

Date registration entered \_\_\_\_\_

**Highest Credential Earned**

- No Credential
- GED
- HSED
- High School Diploma
- Some college credit
- Short-term diploma or certificate
- 1yr Diploma
- 2yr Diploma
- Associate Degree
- Associate Degree  
    Plus Additional Credential
- Baccalaureate
- More than Baccalaureate
- Student Declined/Unknown

It is your responsibility to contact Northwood Tech to officially drop a class. If you decide to drop, you should do so immediately as a single day can affect your refund amount. A full refund will be given if you notify Northwood Tech prior to the first scheduled class meeting.

CLASS NO.	CATALOG NO.	CLASS TITLE	LOCATION	START DATE	CLASS FEE
Once registered for a course(s), you have created a liability with Northwood Tech and a promise to pay.					<b>TOTAL</b>

A full detailed Annual Security Report can be located at the following link: [www.northwoodtech.edu/annualsecurityreport](http://www.northwoodtech.edu/annualsecurityreport)  
 Northwood Tech is an Equal Opportunity/Access/Affirmative Action/Veterans/Disability Employer and Educator.

**Traffic-Related Registration:** Motorcycle, Traffic Safety, Group Dynamics, Multiple Offender

Driver's License Number \_\_\_\_\_ Assessment Agency and Date \_\_\_\_\_

**Youth Registration:** With parent/guardian approval, Northwood Tech courses are open to students age 16 or younger when the course meets outside student's normal school hours. Some courses may have minimum age prerequisites.

Parent/Legal Guardian name: \_\_\_\_\_ (please print)                      Signature: \_\_\_\_\_                      Date: \_\_\_\_\_

**Agency Bill/Sponsored Registration:** If an agency or employer has agreed to pay your tuition, provide organization name, signature and attach written authorization.

Name of Business/Agency or EMS/Fire Sponsor: \_\_\_\_\_

I authorize Northwood Tech to forward information regarding the completion of this course to the sponsor listed on the line above.

Student Signature \_\_\_\_\_ 07.23.21

PAYMENT METHOD:  Check/money order payable to Northwood Technical College CK # \_\_\_\_\_  Cash  
 Agency bill (complete section above)

Credit Card No. \_\_\_\_\_ Exp. Date \_\_\_\_\_ Security Code \_\_\_\_\_  
    (Mastercard/Visa/Discover)                      (month/year)

Name on Card \_\_\_\_\_ Cardholder Signature \_\_\_\_\_

You have likely heard that Wisconsin Indianhead Technical College has become **Northwood Technical College** as of August 2021.

Celebrate our new name with us as we continue to provide quality education and experiences for you!

Check out our new identifiers below and learn more about these changes and more at [northwoodtech.edu/name-change](http://northwoodtech.edu/name-change)



**Northwood**  
Technical College

(New Logo)



(New Mascot)



(New Seal)



Northwood Technical College  
1900 College Drive  
Rice Lake, WI 54868