

**Northwood Tech** First in Training Solutions

# Continuing Education

Professional Development / Life & Leisure



**FALL 2022**

**page 6**

**Wild Mushrooms**

**page 7**

**Artistic Welding**

**page 10**

**Microsoft Teams**

**page 26**

**Safety Seminar**



**Northwood**  
Technical College

ASHLAND • NEW RICHMOND • RICE LAKE • SUPERIOR  
BALSAM LAKE • HAYWARD • LADYSMITH

[NORTHWOODTECH.EDU](http://NORTHWOODTECH.EDU)

# NORTHWOOD TECH Continuing Education

## PROFESSIONAL DEVELOPMENT / LIFE & LEISURE

Welcome to Northwood Tech's Fall 2022 Continuing Education catalog. Inside you will find a variety of informative and exciting Professional Development and Life & Leisure courses, designed to enhance your learning experience. We are pleased to continue to provide these learning opportunities for you! Courses are offered in a variety of instructional formats, including:

### On Site

These courses are offered in person at a variety of campus locations throughout the district, providing face to face instruction and interaction with the instructor.

### Online Live

These courses are offered during a specific time period that can be accessed from your home or office computer or tablet using free web-conferencing software. You will receive log-in information about 1 - 3 days prior to class through the email address you provide when you register. Your computer must have a reliable internet connection, microphone and camera. You can interact with the teacher during the class.

### Online

These courses are offered via the Internet and accessed by using a web browser. You can access the course at any time. Offline supervised tests/exams at specified sites may be conducted in conjunction with these courses.

## It's Easy to Register!

ONLINE | PHONE | MAIL

*For complete registration information, please see page 30.*

You have likely heard that Wisconsin Indianhead Technical College has become **Northwood Technical College** as of August 2021.

Celebrate our new name with us as we continue to provide quality education and experiences for you!

Check out our new identifiers below and learn more about these changes and more at [northwoodtech.edu/name-change](https://northwoodtech.edu/name-change)



(New Logo)



(New Mascot)



(New Seal)

## LIFE & LEISURE pgs 4 - 9

- Art
- Financial Management
- Driver Safety
- Gardening
- Language
- Manufacturing & Technology
- Motorcycle
- Physical Education
- Wellness
- Writing

## COMPUTERS & TECHNOLOGY pgs 9 - 13

- Computer Software
- Technology for Personal Use

## BROADBAND pg 14

- Broadband

## EARLY CHILDHOOD EDUCATION pg 15

- Child Care

## BUSINESS, FINANCE & LEADERSHIP pgs 16 - 19

- Business
- Insurance
- Insurance CE
- Leadership
- Real Estate

## HUMAN SERVICES pgs 20 - 21

- Caregiving
- Medical Assistant

## LAW, PUBLIC SAFETY & SECURITY pgs 21 - 25

- Emergency Medical Services

## MANUFACTURING, TECHNOLOGY & ENGINEERING pg 25 - 26

- Manufacturing
- Safety

## TRANSPORTATION, DISTRIBUTION & LOGISTICS pg 26 - 27

- Driver Training

### YOUR INVESTMENT, THEIR FUTURE



**The Northwood Tech Foundation Mission** is to encourage the success and achievement of Northwood Tech students, staff, faculty and alumni.

Our students are pursuing an education for a chance at a better life – for themselves and for their families. Together, we help them achieve their dreams. For information on how you can take part in this mission & support students in your area, visit: [northwoodtech.edu/foundation](http://northwoodtech.edu/foundation)



## LIFE & LEISURE

### Art

#### Art: Drawing Flowers **NEW!**

60-815-605

In this three-session, weekly class, observe and interpret flowers using your own close-up photos, images from garden catalogs, or real flowers. Draw along with the instructor as she demonstrates different techniques during each session. Practice using pencil and a drawing pen to explore the art element of line. Use a water-soluble pen and a brush dipped in water to capture the form of the flower. She'll show you how to create a watercolor wash with permanent pen to create whimsical, fun works of art. You may also use watercolor pencils with drawing pen and/or regular color pencils to capture the visual essence of vibrant flowers. You'll have the opportunity to share your work during class. The supply list may be viewed at [www.NorthwoodTech.edu/supplies](http://www.NorthwoodTech.edu/supplies)

65781 Oct 10-Oct 24 M 3p-4:30p \$39.75/\$25.65  
*Online Live Diana Randolph*

#### Drawing for the Absolute Beginner

Gain a solid foundation in the basics of drawing to become the artist you've always wanted to be. This course will help you become familiar with paper type, drawing styles, techniques, and basic principles of perspective, layout and design. Ed2Go is the online delivery platform for this class and all tech support and class assistance is handled directly through Ed2Go. Register and pay via Ed2Go at [northwoodtech.edu/continuing-education-and-training/professional-development/online-classes](http://northwoodtech.edu/continuing-education-and-training/professional-development/online-classes)

N/A Start dates vary \$100  
*Online Ed2GoStaff*

#### Introduction to Digital Scrapbooking

Make the most of your scrapbooking talents to show off your photos and memorabilia with digital scrapbooking. Build scrapbook pages, use artistic journaling and produce your own artwork with Photoshop Elements. Ed2Go is the online delivery platform for this class and all tech support and class assistance is handled directly through Ed2Go. Register and pay via Ed2Go at [northwoodtech.edu/continuing-education-and-training/professional-development/online-classes](http://northwoodtech.edu/continuing-education-and-training/professional-development/online-classes)

N/A Start dates vary \$100  
*Online Ed2GoStaff*

#### Introduction to Interior Design

Learn to transform plain living spaces into beautiful and functional rooms. This course will teach you how to design every aspect of a room while taking into account color theory, industry trends, special arrangements, floor plans, design ideas, and interior design basics. Ed2Go is the online delivery platform for this class and all tech support and class assistance is handled directly through Ed2Go. Register and pay via Ed2Go at [northwoodtech.edu/continuing-education-and-training/professional-development/online-classes](http://northwoodtech.edu/continuing-education-and-training/professional-development/online-classes)

N/A Start dates vary \$115  
*Online Ed2GoStaff*

#### Photographing Nature with Your Digital Camera

Discover how your nature photos can become works of art rather than just snapshots. This course will help you explore composition and lighting as you master your digital camera's controls and features to take exceptional nature photos in no time. Ed2Go is the online delivery platform for this class and all tech support and class assistance is handled directly through Ed2Go. Register and pay via Ed2Go at [northwoodtech.edu/continuing-education-and-training/professional-development/online-classes](http://northwoodtech.edu/continuing-education-and-training/professional-development/online-classes)

N/A Start dates vary \$100  
*Online Ed2GoStaff*

## Save the Date!

Emergency Services Conference '23

March 24-25, 2023 | Rice Lake

Registration and course details will be available January 2023.

[bit.ly/northwoodtechCEevents](http://bit.ly/northwoodtechCEevents)





### Secrets of Better Photography

Learn to take outstanding photos and get the best results whether you are using a DSLR, a point-and-shoot, or your phone camera. Each lesson contains exercises and assignments that will help you apply new techniques to your own camera and make a distinctive difference in your photos. Ed2Go is the online delivery platform for this class and all tech support and class assistance is handled directly through Ed2Go. Register and pay via Ed2Go at [northwoodtech.edu/continuing-education-and-training/professional-development/online-classes](http://northwoodtech.edu/continuing-education-and-training/professional-development/online-classes)

N/A Start dates vary \$100  
 Online Ed2GoStaff

## Financial Management

### ABC's & Ds Medicare

47-162-478

Are you nearing Medicare age? Do you have questions about Medicare options and enrollment? Are you responsible for someone else's healthcare decisions? If so, this short seminar is for you. Join us to gain a fundamental understanding of the elements of Part A (Hospital Insurance), Part B (Medical Insurance), Part C (Medicare Advantage), and Part D (Medicare Drug Coverage) as it relates to consumers. Learn about initial enrollment options and additional enrollment periods as they pertain to the Medicare Plan types.

65252 Nov 8 T 6p-8p \$11.67/\$4.50  
 Online Live Dan Conrad

### Personal Finance

Set clear financial goals, make the right investments, increase financial security and be prepared to retire someday. Gain control over the financial impact of your choices with tools that are useful, realistic, and easy to work into your regular routine. Ed2Go is the online delivery platform for this class and all tech support and class assistance is handled directly through Ed2Go. Register and pay via Ed2Go at [northwoodtech.edu/continuing-education-and-training/professional-development/online-classes](http://northwoodtech.edu/continuing-education-and-training/professional-development/online-classes)

N/A Start dates vary \$115  
 Online Ed2GoStaff

### Wills and Trusts

47-102-441

Understand what your current estate plan will achieve for you, how to avoid probate of your assets, and reduce or eliminate taxes to the extent possible. You will also learn how to effectively pass on your assets in the way that you desire.

65342 Oct 17 M 1p-3p \$11.67/\$4.50  
 Online Live Susan Miley

## Driver Safety

### Driver Education - Theory

42-812-401

Students gain awareness of the driving task and the responsibilities that accompany it. They demonstrate knowledge of traffic laws and regulations that help provide safe and efficient patterns. Students understand the impact that natural forces and conditions have concerning driving. They learn to identify hazardous conditions and react appropriately to avoid or minimize problems. Students develop an attitude of safe, courteous, and defensive driving. \*\*Please note - This is an online class with specific assignments to be completed each of the six weeks. Assignments open each Monday morning, and students can work on their assignments anytime throughout the week but must have the assignments completed by Sunday evening.

65489	Sep 12-Oct 23	24/7	\$120
	Online		Jordee Reimer
65490	Sep 12-Oct 23	24/7	\$120
	Online		Jordee Reimer
65491	Sep 12-Oct 23	24/7	\$120
	Online		Jordee Reimer
65492	Oct 24-Dec 4	24/7	\$120
	Online		Jordee Reimer
65493	Oct 24-Dec 4	24/7	\$120
	Online		Jordee Reimer
65494	Oct 24-Dec 4	24/7	\$120
	Online		Jordee Reimer
65495	Dec 5-Jan 22	24/7	\$120
	Online		Jordee Reimer
65496	Dec 5-Jan 22	24/7	\$120
	Online		Jordee Reimer
65497	Dec 5-Jan 22	24/7	\$120
	Online		Jordee Reimer



**Real Estate | Pgs 18-19**

### Traffic Safety for Point Reduction

42-812-404

Participants of the Traffic Safety course will examine their driving behavior and review traffic laws and penalties. Emphasis will be placed on ways to drive responsibly. The Traffic Safety class will show participants how to develop a change plan to reduce their risk of traffic violations and crashes. Students who successfully complete this Traffic Safety class may be eligible to receive a three-point reduction from their driving record. This class also meets the requirements for anyone that has received a "Failure to Yield Right of Way Violation" 2011 Wisconsin Act 173-346.18.

64866	Oct 8-Oct 15 <i>Ashland: 203</i>	Sa 8a-2p	\$75.54/\$32.50 <i>Timothy Smith</i>
64867	Nov 5-Nov 12 <i>Superior: 112</i>	Sa 8a-2p	\$75.54/\$32.50 <i>Timothy Smith</i>
64868	Nov 9-Nov 17 <i>Rice Lake: 155</i>	WTh 6p-9p	\$75.54/\$32.50 <i>Clifford Parr</i>
64869	Dec 5-Dec 14 <i>New Richmond: 1210</i>	MW 6p-9p	\$75.54/\$32.50 <i>Davin Miller</i>

## Gardening

### Growing Plants for Fun and Profit

Turn your love of plants into an enjoyable and profitable home business. This course provides information on licensing, site preparation, equipment, how and where to find supplies, how to select and produce plants, how to produce quality material, and how to market your product. Ed2Go is the online delivery platform for this class and all tech support and class assistance is handled directly through Ed2Go. Register and pay via Ed2Go at [northwoodtech.edu/continuing-education-and-training/professional-development/online-classes](http://northwoodtech.edu/continuing-education-and-training/professional-development/online-classes)

N/A	Start dates vary	\$100
	<i>Online</i>	<i>Ed2GoStaff</i>

### Wild Mushrooms 101

60-001-601

Wild mushrooms 101 - Interested in learning how to identify wild mushrooms? This course offers information on the practice of harvesting wild mushrooms for consumer use. You will learn how to identify your mushrooms. Learn about WI common edible mushrooms, as well as the toxic species to avoid. Your instructor is a self-taught mushroom identification expert, studying fungi since 2016. She is now a Co-Founder of the Lake Superior Mycological Society, an instructor at the Duluth Folk School, and gives presentations or teaches at events around the country.

65563	Oct 13 <i>Online Live</i>	Th 6p-8p	\$16.25/\$11.55 <i>Ariel Bonkoski</i>
65564	Nov 17 <i>Online Live</i>	Th 6p-8p	\$16.25/\$11.55 <i>Ariel Bonkoski</i>

## Language

### Beginning Conversational French

Proper pronunciation is essential for excellent communication. So, whether you intend to travel abroad or simply want to learn a fun new skill, the Beginning Conversational French course will help you master the basics of French pronunciation. Ed2Go is the online delivery platform for this class and all tech support and class assistance is handled directly through Ed2Go. Register and pay via Ed2Go at [northwoodtech.edu/continuing-education-and-training/professional-development/online-classes](http://northwoodtech.edu/continuing-education-and-training/professional-development/online-classes)

N/A	Start dates vary	\$100
	<i>Online</i>	<i>Ed2GoStaff</i>



**CERTIFIED  
MEDICAL  
ASSISTANT**

---

**Virtual CEU Workshop**

**Oct 29 | Pg 21**

Save the date for spring workshops:

- February 18, 2023
- April 15, 2023

[bit.ly/northwoodtechCEvents](http://bit.ly/northwoodtechCEvents)

## Conversational Japanese

Prepare for your next trip to Japan by learning the basics of conversational Japanese. Learn useful words and phrases for conversing as you master the essentials of the Japanese language. Ed2Go is the online delivery platform for this class and all tech support and class assistance is handled directly through Ed2Go. Register and pay via Ed2Go at [northwoodtech.edu/continuing-education-and-training/professional-development/online-classes](http://northwoodtech.edu/continuing-education-and-training/professional-development/online-classes)

N/A Start dates vary \$100  
*Online Ed2GoStaff*

## Speed Spanish

Learn six easy recipes to glue Spanish words together into sentences, and you'll be engaging in conversational Spanish in no time. Ed2Go is the online delivery platform for this class and all tech support and class assistance is handled directly through Ed2Go. Register and pay via Ed2Go at [northwoodtech.edu/continuing-education-and-training/professional-development/online-classes](http://northwoodtech.edu/continuing-education-and-training/professional-development/online-classes)

N/A Start dates vary \$115  
*Online Ed2GoStaff*

## Manufacturing & Technology

### Artistic Welding

60-442-600

Do you have little or no experience with welding? Explore welding in a safe environment with a focus on its artistic possibilities. Collaborative and individual projects are encouraged. No loose clothing and hair must be tied back.

65301 Oct 13-Nov 17 Th 5p-8p \$174.60/\$118.20  
 Dec 1-Dec 8 Th 5p-8p  
*Spooner HS Samuel Woods*

### Auto Maintenance for Women

60-404-610

Do you feel prepared and safe in the case that you get a flat tire or your battery fails? Learn how to plan ahead for unknowns on the road and understand how some basic auto maintenance skills can apply to most vehicles. In this safe, team-oriented environment, learn basic safety skills, how to change oil, use jumper cables, jack and change a tire, and check fluids.

65353 Oct 4-Oct 13 TTh 6:30p-8:30p \$51.50/\$32.70  
*Superior: 117 Todd Asanovich*

## Motorcycle

### 3-Wheel Basic Rider Course

42-816-404

The MSF 3-Wheel Basic Rider Course (3WBRC) is a basic, entry-level, learn-to-ride 3-wheel motorcycle (3WMC) training and education course. It provides fundamental skills similar to the MSF Basic Rider Course but on 3-wheel, 3-track motorcycles (not motorcycles with a sidecar or car-based motorcycles). 3WBRC Rider Coaches who have been trained and certified by the MSF conduct the 3WBRC. Registration for this class is handled online at: [LearntoRide3wheel.com](http://LearntoRide3wheel.com)

Sep 17-Sep 18 SaSu 8a-5p  
*Rice Lake: 155 Richard Richter*

### Motorcycle - Basic Rider 1

42-816-400

This 16-hour course is approved by the Department of Transportation. It is designed to teach the beginner or experienced rider the safe techniques to riding a motorcycle. It consists of 6 hours of classroom and 10 hours of on-cycle instruction. After Successful completion of this class you would receive a "waiver" to take to the DMV that may waive you from taking the road test in order to obtain your Motorcycle Endorsement. Due to a new curriculum set by the State of Wisconsin and MSF, you are now required to take an online course prior to the start of class. The cost of this course is \$19.99 and is separate from the cost of Northwood Tech Motorcycle course. You can register for this course at <http://msf-usa.org/students.aspx>. Once there, you click "Enroll Now" under Basic eCourse. After you complete the online course, please make sure to print your Completion Certificate as you are required to bring the certificate to the first day of class or provide a copy of the certificate to Northwood Tech within 5-7 days of completing the Motorcycle safety course. Failure to complete the online course within the 5-7 days of completing this course will result in a Failure to Northwood Tech Motorcycle course and no refund will be given. It is strongly recommended that you take the eCourse before you start your Northwood Tech Motorcycle Safety Course as you will learn valuable information that will help you with the range portion of our class. Students are expected to have some basic understanding that is provided through the online course during the Motorcycle Safety Course.

65651 Sep 17-Sep 18 SaSu 8a-5p \$263.45  
*Rice Lake: 401 Matthew Fitch*

65653 Sep 17-Sep 18 SaSu 8a-5p \$263.45  
*New Richmond: 1210 Timothy Busse*

65652 Sep 24-Sep 25 SaSu 8a-5p \$263.45  
*Rice Lake: 401 Richard Richter*

## Physical Education

### Hatha Yoga

60-807-628

Hatha Yoga is a very gentle style of yoga that combines stretching (postures) with breath work and meditation to connect you to all parts of yourself. A few of the many benefits include improved flexibility, mobility, strength, circulation, relaxation, balance and energy. Yoga helps to bring awareness and trust to your body, calmness to your restless mind and joy to your spirit. Please bring your own mat, a blanket, two yoga blocks and a 6-8 foot strap. As always, please check with your physician before starting this or any other exercise class.

65638	Sep 12-Oct 17 Online Live	M 9a-10a	\$39.75/\$25.65 Mary Jirik
65639	Sep 13-Oct 18 Online Live	T 9a-10a	\$39.75/\$25.65 Mary Jirik
65640	Sep 14-Oct 19 Online Live	W 9a-10a	\$39.75/\$25.65 Mary Jirik
65641	Sep 15-Oct 20 Online Live	Th 9a-10a	\$39.75/\$25.65 Mary Jirik
65642	Oct 24-Nov 14 Online Live	M 9a-10a	\$28/\$18.60 Mary Jirik
65643	Oct 25-Nov 15 Online Live	T 9a-10a	\$28/\$18.60 Mary Jirik
65644	Oct 26-Nov 16 Online Live	W 9a-10a	\$28/\$18.60 Mary Jirik
65645	Oct 27-Nov 17 Online Live	Th 9a-10a	\$28/\$18.60 Mary Jirik
65646	Nov 28-Dec 19 Online Live	M 9a-10a	\$28/\$18.60 Mary Jirik
65647	Nov 29-Dec 20 Online Live	T 9a-10a	\$28/\$18.60 Mary Jirik
65648	Nov 30-Dec 21 Online Live	W 9a-10a	\$28/\$18.60 Mary Jirik
65649	Dec 1-Dec 22 Online Live	Th 9a-10a	\$28/\$18.60 Mary Jirik

## Wellness

### Boosting Brain Botanically **NEW!**

60-560-610

Brain Boosting Herbs. Concerned about cognitive decline or mental foginess due to issues such as excess stress, menopause, dementia, COVID or Lyme Disease? This workshop may be for you. Nootropics are a special category of herbs that target cognitive health, enhancing emotional and mental well-being and acuity. They have recently received much attention in clinical research as significant supports for the brain. Nootropic derives from the Greek word noos (mind) and topos (blend); meaning acting on the mind. These herbs, supplements and even pharmaceuticals are used to enhance memory, improve mood, prevent and slow the onset of dementia or Alzheimer's. Master Herbalist and Naturopath Gigi Stafne will introduce and explain a variety of Nootropic herbs such as Bacopa, Gotu Kola, Rosemary among others. Attend either in person at the Rice Lake campus or virtually via BlueJeans. Pre-registration required; details will be emailed to you prior to class start.

65802	Dec 6 Rice Lake: 155	T 1p-3p	\$16.25/\$11.55 Gigi Stafne
65803	Dec 6 Online Live	T 1p-3p	\$16.25/\$11.55 Gigi Stafne

### Lose Weight and Keep It Off

Discover how to establish a healthy approach to weight loss and weight management. By the end of this course, you'll know how to set effective goals for eating, exercise, and many other elements that affect your weight, and be on your way to losing weight and keeping it off for good. Ed2Go is the online delivery platform for this class and all tech support and class assistance is handled directly through Ed2Go. Register and pay via Ed2Go at [northwoodtech.edu/continuing-education-and-training/professional-development/online-classes](http://northwoodtech.edu/continuing-education-and-training/professional-development/online-classes)

N/A	Start dates vary Online	\$100 Ed2GoStaff
-----	----------------------------	---------------------



## 3 Ways to Improve Allyship

A workshop to help shape your work culture to be more welcoming and inclusive.

**Pg 18**



**Lucious, Low-Fat, Lighting Quick Meals**

Learn to create delicious and nutritious meals by reducing fat without sacrificing flavor. Gain tips on menu planning and quicker cooking, while trying out over 50 exciting lower-fat recipes. Ed2Go is the online delivery platform for this class and all tech support and class assistance is handled directly through Ed2Go. Register and pay via Ed2Go at [northwoodtech.edu/continuing-education-and-training/professional-development/online-classes](http://northwoodtech.edu/continuing-education-and-training/professional-development/online-classes)

N/A Start dates vary \$100  
 Online Ed2GoStaff

**Writing****Do You Enjoy Poetry & Writing? NEW!**

60-801-601

Are you passionate about ecology? Do you enjoy poetry and writing. Explore how to write poetry with an ecological emphasis or message. We will read examples of ecopoetry, write to prompts, then share and shape our writing.

65782 Nov 7-Nov 14 M 6:30p-8p \$28/\$18.60  
 Online Live Catherine Young

**COMPUTERS & TECHNOLOGY****Computer Software****Beginning Excel**

60-103-602

You will be amazed at what Excel can do for you! Learn how to create worksheets for work and personal use. Understand the basics of navigating through the cells, formatting and setting up a spreadsheet for maximum efficiency. You will see how easy it is to have your numbers calculated for you in just seconds and how to sort through long, ponderous lists with absolute ease. There will be plenty of time to practice and ask questions. Basic computer skills required.

65694 Oct 4-Oct 18 T 5:30p-7:30p \$39.75/\$25.65  
 Online Live Melissa Turngren

**Introduction to InDesign CC**

Learn how to use Adobe InDesign CC software to create professional-quality letterhead, brochures, forms, eBooks, business materials and more. Hands-on exercises and expert instruction will help you discover how the program features relate to producing actual usable documents. Ed2Go is the online delivery platform for this class and all tech support and class assistance is handled directly through Ed2Go. Register and pay via Ed2Go at [northwoodtech.edu/continuing-education-and-training/professional-development/online-classes](http://northwoodtech.edu/continuing-education-and-training/professional-development/online-classes)

N/A Start dates vary \$115  
 Online Ed2GoStaff

**KEEP ON TRUCKIN'****Truck Driving | Class B CDL Permit Prep**

See courses on pages 26-27, visit [NorthwoodTech.edu](http://NorthwoodTech.edu) or contact an Admissions Advisor at **800.243.9482** to learn more.

### Mac Basics

60-107-602

Your Mac includes macOS, the world's most advanced desktop operating system. macOS includes features and apps you'll use each day, and it enables your Mac, iPhone, iPad, iPod touch, and Apple Watch to work together. During this class, you will learn about the desktop, customizing your Mac, Apple ID and iCloud, using your Apple devices together, explore other Apps, find music and apps, create files, protect your data, explore the Mac hardware and much more!

65673 Sep 28 W 1p-3p \$16.25/\$11.55  
*Online Live Sara Reimann*

### Microsoft Teams Intro **NEW!**

47-103-410

Learn the basics of Teams! Chat, meetings, teams, and channels will be covered. Completing this class will give you the foundation you need to use Teams in our rapidly changing technological world. A Teams class invitation will be sent to you at the email address provided during registration.

65779 Sep 27 T 2p-4p \$19/\$11.83  
*Online Live Laurie Simon*

### Microsoft Teams

47-103-410

Are you ready to learn everything you need to know about Microsoft Teams? If so, let's get you beyond the basics. Each class session will be highly interactive. Topics may include: create and set-up teams; channels, posts and messages; files and management; chat and calls; meetings, live events and calendars; apps and tools. Ensure a valid email address is used in registration as you will receive your class invite through your email account prior to start of class.

65780 Oct 4-Oct 11 TTh 2p-4p \$49/\$27.48  
*Online Live Laurie Simon*

### Microsoft OneDrive **NEW!**

47-103-409

OneDrive is an online personal storage that you get when you set up a Microsoft account to use services such as Outlook. Use OneDrive to save documents, photos and other files in the cloud, share them with friends and even collaborate on the content.

65657 Sep 29 Th 11:30a-1p \$19/\$11.83  
*Online Live Sara Reimann*

### Microsoft OneNote **NEW!**

47-103-409

OneNote is a digital notebook that automatically saves and syncs your notes as you work. OneNote is available on Windows or Mac as well as your smartphone and tablets. Instead of grabbing a piece of paper and a pen to jot down notes, simply use your device instead.

65658 Nov 17 Th 11:30a-1p \$19/\$11.83  
*Online Live Sara Reimann*

### Windows 11 **NEW!**

47-103-409

Learn the essential components of Windows 11. Become familiar with how to customize the Start Menu and work with the mouse, touchscreen, and keyboard. Explore Apps, create and modify user account settings, and understand file storage including photo management.

65580 Sep 27 T 1p-3p \$11.67/\$4.50  
*Online Live Sara Reimann*

### Windows vs Mac **NEW!**

60-107-602

Windows vs Mac: The Big Debate. The difference between the two computers have become more subtle and revolve around the personal taste; however, Windows and Macs do offer some clear-cut differences. This course will compare those differences.

65669 Oct 25 T 1p-3p \$16.25/\$11.55  
*Online Live Sara Reimann*

## Technology for Personal Use

### Android Intro

60-107-602

Getting to know a new mobile device can be exciting, especially if this is your first smartphone or tablet. The key is to start with the basics and take it one step at a time, so you don't get overwhelmed. First, make sure you're comfortable with the interface, including the screen, some of the built-in apps. Then you can move on to some other fundamental tasks, like connecting to the Internet.

65664 Nov 7 M 1p-3p \$16.25/\$11.55  
*Online Live Sara Reimann*

### Backing Up Your Computer

60-107-602

There are two types of hard drives: those about to fail, and those that will fail eventually. Plan accord-



ingly. It goes without saying that backing up data is a sensible thing to get into the habit of doing. Not only does it make sense in case your laptop is stolen, or your hard disk fails, but it also means that you have more options for recovery should your computer become infected. In this course you will learn many options available for backing up your data, and we will discuss the pros and cons of each method.

65579	Oct 31 <i>Online Live</i>	M 1p-3p	\$16.25/\$11.55 <i>Sara Reimann</i>
65581	Dec 7 <i>Online Live</i>	W 1p-3p	\$16.25/\$11.55 <i>Sara Reimann</i>

### Buy/Sell on Facebook **NEW!**

60-107-602

Facebook took on Etsy and eBay in 2016 with the launch of Marketplace, a feature within the main Facebook app that you can use to buy and sell goods. We've seen it work really well on a local basis because it's so simple to see free and paid-for items that are around where you live and around the stuff you're interested in. Before marketplace, people used Facebook Groups to buy, sell and trade even barter. You could set up a garage sale-type group for your community, for instance, so that people in your local neighborhood could post things they had for sale and look for items from others. It was a bit clunky though, with Marketplace offering a much more streamlined approach.

65670	Nov 2 <i>Online Live</i>	W 1p-3p	\$16.25/\$11.55 <i>Sara Reimann</i>
65672	Dec 5 <i>Online Live</i>	M 1p-3p	\$16.25/\$11.55 <i>Sara Reimann</i>

### Computer Security/Privacy Protection

60-107-602

Whether you realize it or not, the Internet touches almost all aspects of your daily life and you need the tools, resources and education to stay safe online. In this class you will learn how you can protect your computers, mobile devices, information and identity. Topics include Internet browsing & tracking, USB devices, authentication, phishing attacks, scams, identity theft, malware, backups, Wi-Fi security, anti-virus software, deleting files securely and more.

65571	Oct 11 <i>Online Live</i>	T 1p-3p	\$16.25/\$11.55 <i>Sara Reimann</i>
-------	------------------------------	---------	--

### Create Custom Photo Gifts **NEW!**

60-107-602

Personalized home decor is the best way to display the images that mean the most to you. Turn your captured memories of your wedding day,

your children's milestones, and favorite vacations into custom home decor items perfect for your living space. Explore our selection of wall art such as canvas prints and photo tiles, cozy items like photo pillows and fleece blankets. Shutterfly has the perfect home decor elements to compliment your space's style - from elegant and modern pieces to farmhouse wall decor. Add a unique touch to your home with one-of-a-kind drinkware, framed prints, personalized cookbooks, and other home goods that will double as unique keepsakes. No matter what room you're looking to design home decor for. Shutterfly has the perfect product to suit you and family's style.

65668	Nov 17 <i>Online Live</i>	Th 5:30p-7:30p	\$16.25/\$11.55 <i>Sara Reimann</i>
-------	------------------------------	----------------	--

### Digital Photo Organization Android/PC

60-305-625

If your digital photo collections are a mess, the good news is that software and online services now have excellent tools for helping you organized your images fast. The goal is to be able to find and share the photos you love without a headache. Learn the concepts and techniques behind efficient photo management, photo editing, organizing, backup, and sharing. This class is for Android/PC users. Please have your devices ready to go for class.

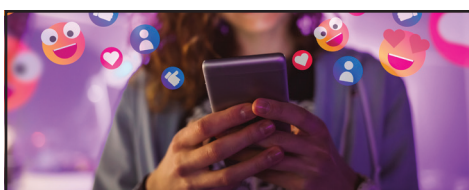
65573	Oct 18 <i>Online Live</i>	T 1p-3p	\$16.25/\$11.55 <i>Sara Reimann</i>
-------	------------------------------	---------	--

### Digital Photo Organization Apple/PC

60-305-625

If your digital photo collections are a mess, the good news is that software and online services now have excellent tools for helping you organized your images fast. The goal is to be able to find and share the photos you love without a headache. Learn the concepts and techniques behind efficient photo management, photo editing, organizing, backup, and sharing. This class is for Apple/PC users. Please have your devices ready to go for class.

65572	Oct 24 <i>Online Live</i>	M 1p-3p	\$16.25/\$11.55 <i>Sara Reimann</i>
-------	------------------------------	---------	--



**Use Social Media Privately**

**Pg 13**

### Explore Voice Assist. Tech **NEW!**

60-107-602

Alexa is Amazon's voice AI. Alexa lives in the cloud and is happy to help anywhere there's Internet access and a device that can connect. Making Alexa part of your life is as simple as asking a question. Alexa can play your favorite song, read the latest headlines, dim the lights in your living room and more. Basically, Alexa wants to make life easier, more meaningful, and more fun by helping you voice control your world - both at home and work.

65659	Sep 29	Th 5:30p-7:30p	\$16.25/\$11.55
	Online Live		Sara Reimann
65671	Dec 8	Th 1p-3p	\$16.25/\$11.55
	Online Live		Sara Reimann

### Facebook Basics

60-107-602

Whether you have been using Facebook for years, or you are a newbie, there is always something to learn. In this class you will learn not only navigating around Facebook but also very important privacy and security settings as well as Facebook marketplace buying and selling.

65583	Nov 1	T 1p-3p	\$16.25/\$11.55
	Online Live		Sara Reimann
65584	Dec 6	T 1p-3p	\$16.25/\$11.55
	Online Live		Sara Reimann

### Genealogy Basics

Learn to trace your family history and make it come alive. Experience hands-on examples that help you dig deeper into your family's past using several subscription-based websites that you will be able to access during the course. Ed2Go is the online delivery platform for this class and all tech support and class assistance is handled directly through Ed2Go. Register and pay via Ed2Go at [northwoodtech.edu/continuing-education-and-training/professional-development/online-classes](http://northwoodtech.edu/continuing-education-and-training/professional-development/online-classes)

N/A	Start dates vary	\$100
	Online	Ed2GoStaff

### Introduction to iPhone/iPad

60-107-602

Let's go beyond the basics with your Apple iPad and iPhone. There's so much more that you can use. We'll discuss handy apps that can make your life easier; be ready to share any favorites of yours. Have your iPad or iPhone fully charged at start of class and have your charging cable handy.

65576	Oct 6	Th 1p-3p	\$16.25/\$11.55
	Online Live		Sara Reimann
65578	Nov 16	W 5:30p-7:30p	\$16.25/\$11.55
	Online Live		Sara Reimann

### iPad Beyond the Basics

60-107-602

Let's go beyond the basics with your Apple iPad and iPhone. There's so much more that you can use. We'll discuss handy apps that can make your life easier; be ready to share any favorites of yours. Have your iPad or iPhone fully charged at start of class and have your charging cable handy.


65586	Oct 13	Th 5:30p-7:30p	\$16.25/\$11.55
	Online Live		Sara Reimann

### ipad/Iphone Advanced

60-107-602

When you're ready to take things further, we will show you some of iPad's/iPhones more advanced features. Did you know your iPad can multitask, using more than one app on the screen at once? Or that you can store documents and data in the cloud with iCloud Drive? Or that you can customize your iPad's screen and sounds? We will show you how to do all this and more.

65660	Oct 20	Th 5:30p-7:30p	\$16.25/\$11.55
	Online Live		Sara Reimann
65661	Oct 26	W 1p-3p	\$16.25/\$11.55
	Online Live		Sara Reimann



Stay **connected & informed** with our biweekly e-newsletter.

Sign up at:

[bit.ly/northwoodtechnews](http://bit.ly/northwoodtechnews)



**Ipad/Iphone Camera & Video NEW!**

60-107-602

Your iPhone/iPad now have advanced hardware and software for taking pictures and recording video. It's able to recognize faces, analyze lighting conditions, record slow-motion video and so much more. This class will show you all the tips and tricks to using the camera, taking video. With just one fingertip, it's possible to edit those photos and videos, create albums, move, and delete images and view memories.

65662	Oct 27	Th 5:30p-7:30p	\$16.25/\$11.55
	<i>Online Live</i>		<i>Sara Reimann</i>

65663	Nov 3	Th 1p-3p	\$16.25/\$11.55
	<i>Online Live</i>		<i>Sara Reimann</i>

**Keeping Track of Passwords**

60-107-602

A good password is easy to remember, but difficult to guess, both for people who know you, and for anonymous password-crackers. We all have so many different passwords to keep track of nowadays. Rather than taking the dangerous shortcuts of either using the same password for everything, or else writing passwords down and keeping them near your computer, this course will teach you tips to make it easier to create unique, memorable passwords for every different application. You will learn how to create good passwords, and what tools can help you store your passwords safely.

65567	Oct 3	M 1p-3p	\$16.25/\$11.55
	<i>Online Live</i>		<i>Sara Reimann</i>

65582	Oct 31	M 5:30p-7:30p	\$16.25/\$11.55
	<i>Online Live</i>		<i>Sara Reimann</i>

**Stream Live Tv**

60-308-601

Thinking about getting rid of another monthly bill? TV lovers have more budget-friendly options these days than they may realize. This class will teach you how to ditch cable and satellite TV - and save a bundle - without giving up your favorite shows or features. Netflix for old TV Shows and Movies, Hulu to watch LIVE TV, Amazon Prime Video and much more! Learn how to use the devices you have to watch your favorite shows, rent/buy movies, view photos on your flat screen TV and much more! This is a VERY fun class that fills up fast.

65569	Oct 4	T 1p-3p	\$16.25/\$11.55
	<i>Online Live</i>		<i>Sara Reimann</i>

65570	Dec 1	Th 5:30p-7:30p	\$16.25/\$11.55
	<i>Online Live</i>		<i>Sara Reimann</i>

**Use Social Media Privately NEW!**

60-107-602

How safe is social media? If you use social media, is your personal information at risk? Can you be harmed using social media? The reality is that social media is as safe, or as risky, as anything on the Internet. If you use social media intelligently and responsibly, you can minimize whatever risks exist.

65667	Nov 14	M 1p-3p	\$16.25/\$11.55
	<i>Online Live</i>		<i>Sara Reimann</i>

**Using All Google Has to Offer**

60-107-602

What is the use of Google? Google offers Gmail, Chrome, Maps, Drive, Spreadsheets, YouTube, Calendar...and much more! With Google, you can upload and store all of your files online. You can then share these files with others and access them from any computer, smartphone, or tablet. With Google you can quickly and easily get answers on your smartphone or computer. Come and find out more about using Google has Everything. Please bring your laptop or device to class.

65574	Oct 17	M 1p-3p	\$16.25/\$11.55
	<i>Online Live</i>		<i>Sara Reimann</i>

65575	Dec 8	Th 5:30p-7:30p	\$16.25/\$11.55
	<i>Online Live</i>		<i>Sara Reimann</i>

**What Not to Share Social Media NEW!**

60-107-602

Using social media is all about being social and sharing your thoughts, experiences, photos and more. That said, is everything you do and think right for sharing? What do your online friends want to see and what would they rather not see from you. Deciding what to share on social media is a delicate dance. Share too much or the wrong things and your friends will quit reading your post and maybe even unfriend you. Share too little and your friends will forget you even there. You need to figure out just what kinds of things to share and how often to share them.

65665	Nov 8	T 1p-3p	\$16.25/\$11.55
	<i>Online Live</i>		<i>Sara Reimann</i>

65666	Dec 13	T 1p-3p	\$16.25/\$11.55
	<i>Online Live</i>		<i>Sara Reimann</i>



## Drawing Flowers

Pg 4

# BROADBAND

## Broadband Technology

### Broadband Cable Installation 201 **NEW!**

47-451-457

The student will design and identify installation practices for network cabling. The focus will be to understand voice and data networking. The basic cable installer will be able to build and administer the physical layer of network infrastructure and gain a deeper understanding of the networking devices that this layer interconnects. This course is 100% online. *Prerequisite: Successful completion of Telco 101 or current employment by a telecommunications company.*

64665 Aug 29-Dec 23 24/7 \$440.85  
*Online Paul Kostner*

### Broadband Fiber Service 101 **NEW!**

47-451-454

This course is an introduction to the evolution of fiber optics. Students will be introduced to the physical characteristics of cable and the transmission of light through fiber optic cable. Students will view basic installation and troubleshooting methods while being introduced to industry color codes, print reading, system maps and a variety of fiber optic services. This course is 100% online. *Prerequisite for Fiber 201.*

64663 Aug 29-Dec 23 24/7 \$147.95  
*Online Trent Givens*

### Broadband Fiber Service 201 **NEW!**

47-451-456

This course will introduce the students to fiber optic communication systems. Topics covered include fiber optic design, installation, test and maintenance for multi-mode and single-mode networks. This course is 100% online. *Prerequisite: Successful completion of Fiber Service 101 or current employment by a telecommunications company.*

64664 Aug 29-Dec 23 24/7 \$440.85  
*Online Paul Kostner*

### Broadband Internet Service 101 **NEW!**

47-451-452

This course is an introduction to the evolution of Internet services. Students will be introduced to the different types of broadband Internet delivery methods, installation and troubleshooting methods, Internet transmission types, safety issues, government regulatory services, the "Internet of Things" (IoT) and future trends. This course is 100% online.

64661 Aug 29-Dec 23 24/7 \$147.95  
*Online Trent Givens*

### Broadband Telco Service 101 **NEW!**

47-451-451

This course is an introduction to the evolution of POTS (Plain Old Telephone Service) and Public Northwood Tech Telephone Networks. Students will be introduced to the physical and electrical design of cables, basic installation, troubleshooting, industry color codes, print reading, system maps and telco service procedures. This course is 100% online. *Prerequisite for Cable 201.*

64660 Aug 29-Dec 23 24/7 \$147.95  
*Online Trent Givens*

### Broadband Television Service 101 **NEW!**

47-451-453

This course is an introduction to the evolution of hybrid fiber coaxial and IPTV systems within the broadband industry. Students will be introduced to RF & IPTV networks, basic installation, print reading and set-top box administration. Students will address the importance of proper installation of customer equipment, troubleshooting and customer service. This course is 100% online.

64662 Aug 29-Dec 23 24/7 \$147.95  
*Online Trent Givens*

## EMERGENCY MEDICAL SERVICES TRAINING

Contact Northwood Tech for all your EMS training needs.



Search courses online at northwoodtech.edu or contact:

**Dee Folie, Paramedic/EMS  
 Clinical Coordinator**

dee.folie@northwoodtech.edu

# FREE Child Care Classes

Child Care licensing classes are being offered at **NO CHARGE** to students for the 2022-23 school year, thanks to a generous grant by Dept. of Children and Family.

For more information and to register, contact:

**gina.monicken@northwoodtech.edu**

**715.246.1885**



## Child Care: Intro to Child Care Profession

47-307-461

This class is a hybrid offering, utilizing Blackboard for course assignments. There is required attendance in online live sessions on Sept. 26, Oct. 3, 10 and 17, from 6-9 pm. Learners must have access to the Internet and a computer to participate in this hybrid course, as well as Microsoft Word to complete the course assignments.

Sep 19-Oct 28	M-F 7a-7:30a	
Online: 24/7		Haley Hennlich
Sep 26	M 6p-9p	
Oct 3	M 6p-9p	
Oct 10	M 6p-9p	
Oct 17	M 6p-9p	
Online Live		Haley Hennlich

## Child Care: Fundamentals Family Child Care

47-307-420

Provides essential information about establishing a family child care that is in accordance with Wisconsin's State Law.

Oct 22	Sa 8:30a-3:30p	
New Richmond: 1210		Rebecca Elbert



## Toddler Care

47-307-470

This class is a hybrid offering, utilizing Blackboard for course assignments. There is required attendance in online live sessions on Nov. 7 and 14, from 6-9 pm. Learners must have access to the Internet and a computer to participate in this hybrid course, as well as Microsoft Word to complete the course assignments.

Oct 31-Nov 18	M-F 7a-7:30a	
Online: 24/7		Haley Hennlich
Nov 7	M 6p-8:30p	
Nov 14	M 6p-8:30p	
Online Live		Haley Hennlich

## Child Care: Skills and Strategies for Child Care Teacher

47-307-462

This class is a hybrid offering, utilizing Blackboard for course assignments. There is required attendance in online live sessions on Nov. 10, 17, Dec. 1, 8, from 6-9 pm. Learners must have access to the Internet and a computer to participate in this hybrid course, as well as Microsoft Word to complete the course assignments.

Nov 7-Dec 16	M-F 7a-7:30a	
Online: 24/7		Haley Hennlich
Nov 10	Th 6p-9p	
Nov 17	Th 6p-9p	
Dec 1	Th 6p-9p	
Dec 8	Th 6p-9p	
Online Live		Haley Hennlich

# BUSINESS, FINANCE & LEADERSHIP

## Business

### Accounting Fundamentals

If you want to increase your financial awareness and gain a marketable skill, this course is for you. You will learn the double-entry bookkeeping, financial transactions, financial reporting, and more. Ed2Go is the online delivery platform for this class and all tech support and class assistance is handled directly through Ed2Go. Register and pay via Ed2Go at [northwoodtech.edu/continuing-education-and-training/professional-development/online-classes](http://northwoodtech.edu/continuing-education-and-training/professional-development/online-classes)

N/A Start dates vary \$115  
 Online Ed2GoStaff

### Everyday Math

Learn how to use math to your advantage in everyday life. The lessons in this course are filled with practical exercises and information that you can put to immediate use. Ed2Go is the online delivery platform for this class and all tech support and class assistance is handled directly through Ed2Go. Register and pay via Ed2Go at [northwoodtech.edu/continuing-education-and-training/professional-development/online-classes](http://northwoodtech.edu/continuing-education-and-training/professional-development/online-classes)

N/A Start dates vary \$115  
 Online Ed2GoStaff

### Keys to Effective Communication

Become more confident, make great first impressions, get along with others, and create better personal and professional relationships. This course provides a step by step process to become a great conversationalist as you use communication to build rapport and create trust, warmth, and respect. Ed2Go is the online delivery platform for this class and all tech support and class assistance is handled directly through Ed2Go. Register and pay via Ed2Go at [northwoodtech.edu/continuing-education-and-training/professional-development/online-classes](http://northwoodtech.edu/continuing-education-and-training/professional-development/online-classes)

N/A Start dates vary \$100  
 Online Ed2GoStaff

## Insurance

### Ins: Principles, Laws & Ethics

47-162-501

This course is designed to meet the Section A, eight-hour, pre-licensing requirement. This includes the areas of the principles of insurance, general Wisconsin insurance laws, and ethics. You are required to purchase your books at the Northwood Technical College bookstore before class.

65285	Sep 12	M 8:30a-5:30p	\$125/\$96.31
	Online Live		Rodney Schultz
65287	Oct 3	M 8:30a-5:30p	\$125/\$96.31
	Online Live		Rodney Schultz
65305	Oct 31	M 8:30a-5:30p	\$125/\$96.31
	Online Live		Rodney Schultz
65307	Dec 5	M 8:30a-5:30p	\$125/\$96.31
	Online Live		Rodney Schultz

### Insurance: Accident & Health

47-162-479

This course is designed to meet the 20-hour requirement for pre-licensing education in the area of accident and health insurance. Prerequisite: You must take the 8-hour Principles Law & Ethics course to apply for your license. If it is past a year since having the laws course and you are taking additional pre-licensing classes, the OCI requires you take the class again before testing. You are required to purchase the textbook at the Northwood Technical College bookstore before class.

65338	Oct 4	T 8:30a-5:30p	\$149/\$105.96
	Oct 5	W 8:30a-12:30p	
	Online Live		Rodney Schultz
65339	Dec 6	T 8:30a-5:30p	\$149/\$105.96
	Dec 7	W 8:30a-12:30p	
	Online Live		Rodney Schultz



# Welding

Pgs 7 & 26



**Insurance: Life**

47-162-481

This course is designed to meet the 20-hour requirement for pre-licensing education in the area of life insurance. Prerequisite: You must take the 8-hour Principles Law & Ethics course to apply for your license. If it is past a year since having the laws course and you are taking additional pre-licensing classes, the OCI requires you take the class again before testing. You are required to purchase the textbook at the Northwood Technical College bookstore before class.

65340	Oct 5	W 1:30p-5:30p	\$149/\$105.96
	Oct 6	Th 8:30a-5:30p	
	<i>Online Live</i>		<i>Rodney Schultz</i>
65341	Dec 7	W 1:30p-5:30p	\$149/\$105.96
	Dec 8	Th 8:30a-5:30p	
	<i>Online Live</i>		<i>Rodney Schultz</i>

**Insurance: Property**

47-162-480

This course is designed to meet the 20-hour requirement for pre-licensing education in the area of property insurance. Prerequisite: You must take the 8-hour Principles Law & Ethics course to apply for your license. If it is past a year since having the laws course and you are taking additional pre-licensing classes, the OCI requires you take the class again before testing. You are required to purchase the textbook at the Northwood Technical College bookstore before class.

65334	Sep 13	T 8:30a-5:30p	\$149/\$105.96
	Sep 14	W 8:30a-12:30p	
	<i>Online Live</i>		<i>Rodney Schultz</i>
65335	Nov 1	T 8:30a-5:30p	\$149/\$105.96
	Nov 2	W 8:30a-12:30p	
	<i>Online Live</i>		<i>Rodney Schultz</i>

**Insurance: Casualty**

47-162-500

This course is designed to meet the 20-hour requirement for pre-licensing education in the area of casualty insurance. Prerequisite: You must take the 8-hour Principles Law & Ethics course to apply for your license. If it is past a year since having the laws course and you are taking additional pre-licensing classes, the OCI requires you take the class again before testing. You are required to purchase the textbook at the Northwood Technical College bookstore before class.

65336	Sep 14	W 1:30p-5:30p	\$149/\$105.96
	Sep 15	Th 8:30a-5:30p	
	<i>Online Live</i>		<i>Rodney Schultz</i>
65337	Nov 2	W 1:30p-5:30p	\$149/\$105.96
	Nov 3	Th 8:30a-5:30p	
	<i>Online Live</i>		<i>Rodney Schultz</i>

**Insurance CE****Comprehensive Estate Planning**

47-162-482

Learn about estate tax planning including calculations and solutions for reducing estate tax. Discover advantages of buy-sell agreements. Understand gifting, trusts, and special planning considerations.

65261	Oct 7	F 8:30a-12:30p	\$65/\$50.65
	<i>Online Live</i>		<i>Brad Charles</i>

**Ins CE: Principles, Laws & Ethics**

47-162-501

See how ethics play a role in the daily operations of agents and their agencies. This course will focus on the areas of the principles of insurance and general Wisconsin insurance laws and ethics. You are required to purchase the textbook at the Northwood Technical College bookstore before the start of class in order to receive CE credit.

65286	Sep 12	M 8:30a-5:30p	\$125/\$96.31
	<i>Online Live</i>		
65288	Oct 3	M 8:30a-5:30p	\$125/\$96.31
	<i>Online Live</i>		
65306	Oct 31	M 8:30a-5:30p	\$125/\$96.31
	<i>Online Live</i>		
65308	Dec 5	M 8:30a-5:30p	\$125/\$96.31
	<i>Online Live</i>		

**Estate Planning**

47-162-482

Take an in-depth look at estate planning and understand the process. Your instructor will help you determine who needs to plan, what information needs to be compiled, and the steps involved in estate planning.

65272	Nov 18	F 1p-5p	\$65/\$50.65
	<i>Online Live</i>		<i>Brad Charles</i>



Start your career journey today.

# Broadband

Pg 14

## Social Security/Medicare

47-162-482

Social Security is a United States federal program of social insurance and benefits developed in 1935. The Social Security program's benefits include retirement income, disability income, Medicare and Medicaid, and death and survivorship benefits. Social Security is one of the largest government programs in the world, paying out hundreds of billions of dollars per year.

65271 Nov 18 F 8:30a-12:30p \$65/\$50.65  
*Online Live Guest Presenter*

## Tax Strategies

47-162-482

Dig into life insurance tax consequences and policies along with annuities. Find out what constitutes a Modified Endowment Contract and how to use one. Discuss qualified and non-qualified retirement plans and IRAs and learn about tax-favored health accounts.

65262 Oct 7 F 1p-5p \$65/\$50.65  
*Online Live Guest Presenter*

## Leadership

### 3 Ways to Improve Allyship **NEW!**

47-196-421

How can you shape your work culture to be more welcoming and inclusive? Are there ways you could invite awareness and interdependence? Understand allyship and intersectionality and how to promote support for the LGBTQ+ community. Learn the power of sharing stories to promote equality. In this lively, interactive session, we will learn current vocabulary and statistics to make a difference and watch our communities thrive! Lisa Koenecke is an experienced and energetic Diversity, Equity, and Inclusion (DEI) professional speaker and facilitator. She specializes in counteracting unconscious bias and LGBTQ+ inclusion in business. Her impact is amplified by strengthening each person's allyship. With a demonstrated history of working in secondary education and a passion for community and social services, she is an expert in counseling, crisis intervention, educational leadership, and program development.

65592 Oct 25 T 11:30a-12:30p \$19/\$11.83  
*Online Live Lisa Koenecke*



## Real Estate

### WI Real Estate Transactions

47-194-484

This course covers vacant land offer to purchase and several areas related to the purchase of vacant land. The course also covers risk management. Contract drafting, broker supervision, and independent contractors are discussed. The course concludes with a discussion of delivery issues including actual receipt, forms of delivery, and binding acceptance. Wisconsin state law requires each licensed agent and broker to complete 18 hours of CE before renewing a license. All licenses expire on Dec 14, 2022. All classes have been approved by the DSPS and will only be available during the fall semester.

65359 Oct 26 W 1p-4p \$65/\$50.65  
*Online Live Mark Kopp*

### WI Listing Contracts

47-194-401

This course covers items involving listing contracts. Subjects covered include inspection and disclosure requirements, real estate condition reports, pre agency, disclosure duties, dual agency, and a discussion of personal property and fixtures. Wisconsin state law requires each licensed agent and broker to complete 18 hours of CE before renewing a license. All licenses expire on Dec 14, 2022. All classes have been approved by the DSPS and will only be available during the fall semester.

65354 Oct 12 W 8:30a-11:30a \$65/\$50.65  
*Online Live Mark Kopp*

### WI Offers to Purchase

47-194-487

This course covers the Residential Offer to Purchase and various contingencies and areas related to the Offer. Items covered include inspection and testing, financing and appraisal contingencies, notice and amendments relating to discovery of defects, secondary offers, bump clauses, and multiple offers. Wisconsin state law requires each licensed agent and broker to complete 18 hours of CE before renewing a license. All licenses expire on Dec 14, 2022. All classes have been approved by the DSPS and will only be available during the fall semester.

65355 Oct 12 W 1p-4p \$65/\$50.65  
*Online Live Mark Kopp*

[Auto Maintenance for Women | Pg 7](#)

**WI New Developments**

47-194-403

This course reviews changes that have occurred in the past two years relating to real estate practice. The course begins with a review of procuring cause, enforcement of ethical violations and license law violations. The course reviews a licensee’s requirement to report criminal convictions. The course covers the following items: Administrative fees, types of agency, protected buyers, advertising a future property, and a class action law suit which could have a long term impact on real estate. Wisconsin state law requires each licensed agent and broker to complete 18 hours of CE before renewing a license. All classes have been approved by the DSPS and will only be available during the fall semester. Wisconsin state law requires each licensed agent and broker to complete 18 hours of CE before renewing a license. All licenses expire on Dec 14, 2022.

65356 Oct 19 W 8:30a-11:30a \$65/\$50.65  
*Online Live Mark Kopp*

**WI Risk Reduction Through Professionalism**

47-194-421

This course covers areas of ethical behavior. Areas covered include disclosure duties of licensees, reliance on third party inspectors, fair housing, assistance animals, and reasonable accommodation. The course also covers agent to agent relations. Wisconsin state law requires each licensed agent and broker to complete 18 hours of CE before renewing a license. All licenses expire on Dec 14, 2020. All classes have been approved by the DSPS and will only be available during the fall semester.

65357 Oct 19 W 1p-4p \$65/\$50.65  
*Online Live Mark Kopp*

**WI Law & Practice**

47-194-483

This is a wide ranging course that covers three different areas of real estate. The three areas covered are condominium listing agreements and condo ownership, waterfront properties which includes a discussion of shoreland zoning laws and lake districts, and the residential buyer agency agreement (WB – 36). Wisconsin state law requires each licensed agent and broker to complete 18 hours of CE before renewing a license. All licenses expire on Dec 14, 2022. All classes have been approved by the DSPS and will only be available during the fall semester.

65358 Oct 26 W 8:30a-11:30a \$65/\$50.65  
*Online Live Mark Kopp*

**Real Estate Law for Salespersons**

47-194-497

This course meets the 72 classroom hours of pre-license education required for a real estate salespersons license as required in Section 452.09(2)(a) of the Wisconsin Statutes. Completing this course will prepare you for the WI Real Estate license exam. Contents include principles of real estate, real estate law, forms, real estate business operations concepts, ethics, land use control and development, environmental concerns, and miscellaneous additional content. The required book costs approximately \$85 and is available at the Northwood Tech bookstore.

65393 Oct 11-Nov 17 TTh 6p-10p \$277.06/\$4.50  
 Nov 29-Dec 20 TTh 6p-10p  
*Online Live Eric Nyhus*

**RE Law for Salespersons Online**

47-194-497

This course meets the 72 classroom hours of pre-license education required for a real estate salespersons license as required in Section 452.09(2)(a) of the Wisconsin Statutes. Completing this course will prepare you for the WI Real Estate license exam. Contents include principles of real estate, real estate law, forms, real estate business operations concepts, ethics, land use control and development, environmental concerns, and miscellaneous additional content. You will have one year to complete this course. Please note that regardless of the date you sign up, you will need to complete by December 25, 2022. If you are signing up closer to that date, consider waiting for the next session of classes. Upon registration, you will receive a password to enter the online REI course and will then receive your textbook and forms book via US Mail. To register, email Sara.Dobberschutz@northwoodtech.edu. \*This class is non-refundable.

65299 Aug 22-Dec 25 24/7 \$262.71/\$4.50  
*Online Ron Nyhus*



**Safety Seminar:  
 Machine Guarding  
 for Manufacturing**

**Sept 21 - Rice Lake | Pg 26**

# HUMAN SERVICES

## Caregiving

### New Richmond Regional Caregiver Conference

47-520-405

16th Annual Regional Caregiver Conference: Finding Hope, Humor & Heart in Caregiving. Don't miss this empowering and educational conference with inspirational keynote speaker, Elaine Sanchez.

This class is for family caregivers attending in-person at the New Richmond campus. This special day will include vendors, breakout sessions, and lunch. Limited seating available for this in-person conference.

**65690** Sep 23 F 8a-3p \$35/\$13.48  
*New Richmond: Conf Center Guest Presenter*

This virtual/Zoom class is for family caregivers and/or those who do not need Continuing Education Units (CEUs). Class link will be emailed 2-3 days prior to the session.

**65692** Sep 23 F 9a-12p \$18.85/\$4.50  
*Online Live Guest Presenter*

This course is for those who want to enroll for Continuing Education Units (CEUs). In-person at Northwood Tech-New Richmond.

**65691** Sep 23 F 8a-3p \$65/\$43.48  
*New Richmond: Conf Center Guest Presenter*

This course is for those who want to enroll for Continuing Education Units (CEUs). Virtual conference via Zoom.

**65693** Sep 23 F 9a-12p \$35/\$20.65  
*Online Live Guest Presenter*

### Rice Lake Regional Caregiver Conference

47-520-405

Empowering Family Caregivers is the theme for this virtual event, held in conjunction with the Rice Lake Regional Caregiver Conference. Topics will include Know Us Before You Need Us, scams and frauds, and music therapy.

This class is for family caregivers attending in-person at the Rice Lake campus. This special event will include interactive breakout sessions and a light snack. Limited seating available; pre-registration required.

**65716** Oct 28 F 8:30a-12p \$20.35/\$6  
*Rice Lake: Conf Center Guest Presenter*

This virtual/Zoom class is for family caregivers and/or those who do not need Continuing Education Units (CEUs). Class link will be emailed 2-3 days prior to the session.

**65718** Oct 28 F 9a-12p \$20.35/\$6  
*Online Live Guest Presenter*

This course is for those who want to enroll for Continuing Education Units (CEUs). In-person at Northwood Tech-Rice Lake.

**65717** Oct 28 F 8:30a-12p \$35/\$20.65  
*Rice Lake: Conf Center Guest Presenter*

This course is for those who want to enroll for Continuing Education Units (CEUs). Virtual conference via Zoom.

**65719** Oct 28 F 9a-12p \$35/\$20.65  
*Online Live Guest Presenter*

### Sawyer County Regional Caregiver Conference

47-520-405

Don't miss the 2022 Sawyer County Regional Caregiver Conference, held in person at Flat Creek Eatery in Hayward or virtually via Zoom. The theme of the event is Navigating the Journey of Aging and Memory Loss Together.

This class is for family caregivers attending in-person at Flat Creek Eatery in Hayward. This special event will include vendors, interactive presentations, and a light snack. Limited seating available for this in-person conference.

**66055** Nov 15 T 2p-6p \$20.35/\$6  
*Hayward: Flat Creek Eatery Guest Presenter*

This virtual/Zoom class is for family caregivers and/or those who do not need Continuing Education Units (CEUs). Class link will be emailed 2-3 days prior to the session.

**66057** Nov 15 T 3p-6p \$20.35/\$6  
*Online Live Guest Presenter*

This course is for those who want to enroll for Continuing Education Units (CEUs). In-person at Flat Creek Eatery, Hayward.

**66056** Nov 15 T 2p-6p \$35/\$20.65  
*Hayward: Flat Creek Eatery Guest Presenter*

This course is for those who want to enroll for Continuing Education Units (CEUs). Virtual conference via Zoom.

**66058** Nov 15 T 3p-6p \$35/\$20.65  
*Online Live Guest Presenter*





### ACLS Renewal

47-531-430

This American Heart Association class will update students on the 2020 AHA guidelines plus recertify them in the skills and competencies needed to manage an adult cardiovascular or cerebrovascular emergency. Students must pass both the cognitive exam and the psychomotor portions of the class to obtain their two year recertification. Students should complete the AHA pre-test prior to class and bring a copy of their test results along with their current ACLS Provider manual to all sessions.

65721	Oct 28	F 8a-5p	\$159/\$130.31
	Rice Lake: 178		Crystal Thome

### Advanced EMT Refresher

47-531-516

This 50 hour refresher will include the review and revision of the Advanced Emergency Medical Technician with inclusion of the National Emergency Medical Services Education Standards. This program is designed to serve as a refresher for Advanced Emergency Medical Technicians who have successfully completed the Advanced Emergency Medical Technician program. PREREQUISITES: Previous completion of a recognized Emergency Medical Technician program. Must also be 18 years of age.

64742	Sep 23	F 6p-10p	\$40.36/\$4.50
	Sep 24	Sa 9a-3p	
	Birchwood Fire Dept.		Marlene Dirkes

This 10 Hour AEMT Refresher course is only for those students who have previously attended a 40 hour EMT Refresher class.

64703	Sep 9-Sep 23	F 6p-10p	\$201.19/\$21.88
	Sep 10-Sep 18	SaSu 9a-3p	
	Sep 24	Sa 9a-3p	
	Birchwood Fire Dept.		Marlene Dirkes

### ASHI Pediatric 1st Aid/CPR Renewal

47-531-417

ASHI Pediatric CPR, AED, and First Aid training program provides an ideal training solution for schools, child care providers, youth sports coaches, and others required to learn how to respond to medical emergencies involving children. This versatile program is based upon the 2022 CPR and First Aid Guidelines, Caring for Our Children, 3rd Ed; and other evidence-based treatment recommendations.

65226	Sep 24	Sa 8:30a-12:30p	\$36/\$21.65
	Rice Lake: 225		Judith Balog

65240	Nov 12	Sa 8:30a-12:30p	\$36/\$21.65
	Hayward-Ojibwa: 107		Matthew Fitch

65247	Dec 3	Sa 8:30a-12:30p	\$36/\$21.65
	Rice Lake: 225		Diana Wymer

65537	Dec 14	W 6p-10p	\$36/\$21.65
	Superior: 111		Instructor TBD

65536	Dec 22	Th 6p-10p	\$36/\$21.65
	Ashland: 427		Instructor TBD

### ASHI Pediatric 1st Aid and CPR

47-531-420

This course will help students gain the knowledge, skills and confidence necessary to respond to and manage medical emergencies involving children and infants until more advanced help is available. A student will be taught the updated guidelines of CPR, and an automated external defibrillator (AED), and first aid for children and infants. This course will certify a student for 2 years in CPR/AED/First Aid. Students will have the option to download a book from the Internet after successful completion of the course.

65234	Nov 12	Sa 8:30a-4:30p	\$44.69/\$16
	Hayward-Ojibwa: 107		Matthew Fitch

65225	Sep 24	Sa 8:30a-4:30p	\$44.69/\$16
	Rice Lake: 225		Judith Balog

65534	Oct 8	Sa 8a-4:30p	\$44.69/\$16
	Ashland: 427		Instructor TBD

65535	Oct 15	Sa 8a-4:30p	\$44.69/\$16
	Superior: 136		Instructor TBD
	Oct 15	Sa 8a-4:30p	
	Superior: 135		Instructor TBD

65246	Dec 3	Sa 8:30a-4:30p	\$44.69/\$16
	Rice Lake: 225		Diana Wymer

### BLS Basic Life Support

47-531-437

The BLS Basic Life Support Course is designed to teach the skills of CPR for victims of all ages including ventilation with a barrier device and use of an automated external defibrillator (AED), and relief of foreign-body airway obstruction (FBAO). It is intended for participants who provide health care

# Facebook

It's where we're at!



Up-to-date info on new classes and events!  
@NorthwoodTechContinuingEducation

to patients in a hospital setting and out-of-hospital settings. This course is for anyone that is required to take a health care provider course for employment. All participants who successfully complete the course, including the written examination and skill demonstrations will receive a BLS Basic Life Support provider completion card that will certify them for two years (credential.) Book provided at class.

65333	Aug 25	Th 8a-4:30p	\$55.54/\$26.85
	<i>Ashland: 427 Instructor TBD</i>		
65222	Sep 10	Sa 8:30a-4:30p	\$55.54/\$26.85
	<i>Rice Lake: 225 Diana Wymer</i>		
65471	Sep 13-Sep 15	TTh 6p-10p	\$55.54/\$26.85
	<i>Ashland: 203 Nicholas Sawyer</i>		
65474	Sep 17	Sa 8a-4:30p	\$55.54/\$26.85
	<i>Superior: 111 Nicholas Sawyer</i>		
65541	Sep 24	Sa 9a-5p	\$55.54/\$26.85
	<i>New Richmond: 1201 Instructor TBD</i>		
65538	Oct 8	Sa 9a-5p	\$55.54/\$26.85
	<i>Balsam Lake: 106 Instructor TBD</i>		
65244	Oct 25-Oct 26	TW 5:30p-9:30p	\$55.54/\$26.85
	<i>Rice Lake: 225 Judith Balog</i>		
65475	Oct 25-Oct 27	TTh 6p-10p	\$55.54/\$26.85
	<i>Superior: 112 Instructor TBD</i>		
65542	Oct 26-Oct 27	WTh 6p-10p	\$55.54/\$26.85
	<i>New Richmond: 1201 Nicholas Sawyer</i>		
65472	Oct 29	Sa 8a-4:30p	\$55.54/\$26.85
	<i>Ashland: 203 Lynette Hoopman-Cornelius</i>		
65473	Dec 6-Dec 8	TTh 6p-10p	\$55.54/\$26.85
	<i>Ashland: 203 Lynette Hoopman-Cornelius</i>		
65543	Dec 6-Dec 7	TW 6p-10p	\$55.54/\$26.85
	<i>New Richmond: 1201 Instructor TBD</i>		
65248	Dec 10	Sa 8:30a-4:30p	\$55.54/\$26.85
	<i>Rice Lake: 221 Diana Wymer</i>		
65476	Dec 10	Sa 8a-4:30p	\$55.54/\$26.85
	<i>Superior: 112 Instructor TBD</i>		

### BLS Basic Life Support Renewal

47-531-439

This course is intended for the biennial renewal of the BLS Basic Life Support. Students must successfully complete skills testing on one-and two-rescuer CPR (adult, child, infant), foreign body airway obstruction (FBAO) procedures (adult, child, infant), and mask with one-way valve usage. A minimum of 84 percent must be attained on the written test. (PREREQUISITE: BLS Basic Life Support completion within previous two years.)

65224	Sep 10	Sa 12:30p-4:30p	\$42/\$27.65
	<i>Rice Lake: 225 Diana Wymer</i>		
65544	Sep 14	W 6p-10p	\$42/\$27.65
	<i>New Richmond: 1201 Instructor TBD</i>		
65481	Sep 20	T 6p-10p	\$42/\$27.65
	<i>Superior: 112 Nicholas Sawyer</i>		
65477	Sep 29	Th 6p-10p	\$42/\$27.65
	<i>Ashland: 427 Instructor TBD</i>		

65232	Oct 1	Sa 12:30p-4:30p	\$42/\$27.65
	<i>Hayward-Ojibwa: 106 Matthew Fitch</i>		
65545	Oct 18	T 6p-10p	\$42/\$27.65
	<i>New Richmond: 1201 Instructor TBD</i>		
65482	Oct 20	Th 6p-10p	\$42/\$27.65
	<i>Superior: 112 Instructor TBD</i>		
65539	Oct 24	M 6p-10p	\$42/\$27.65
	<i>Balsam Lake: 106 Instructor TBD</i>		
65478	Oct 25	T 6p-10p	\$42/\$27.65
	<i>Ashland: 203 Lynette Hoopman-Cornelius</i>		
65245	Oct 26	W 5:30p-9:30p	\$42/\$27.65
	<i>Rice Lake: 225 Judith Balog</i>		
65546	Nov 17	Th 6p-10p	\$42/\$27.65
	<i>New Richmond: 1201 Instructor TBD</i>		
65479	Nov 29	T 6p-10p	\$42/\$27.65
	<i>Ashland: 203 Lynette Hoopman-Cornelius</i>		
65483	Dec 1	Th 6p-10p	\$42/\$27.65
	<i>Superior: 111 Instructor TBD</i>		
65249	Dec 10	Sa 12:30p-4:30p	\$42/\$27.65
	<i>Rice Lake: 221 Diana Wymer</i>		
65480	Dec 15	Th 6p-10p	\$42/\$27.65
	<i>Ashland: 203 Lynette Hoopman-Cornelius</i>		
65547	Dec 15	Th 6p-10p	\$42/\$27.65
	<i>New Richmond: 1201 Instructor TBD</i>		



We offer training for

# Firefighters

## INTERESTED?

Contact Carolyn

Carolyn.Anderson@northwoodtech.edu

715.752.8202

**CPR/AED/Basic First Aid Renewal-ASHI**

47-531-459

This course will recertify students in CPR/AED & Basic First Aid. Students will renew their skills in CPR/AED and First Aid. **PREREQUISITE:** Students must have taken the original course within the last 2 years. *This class will cover adult/child/infant skills.*

65531	Sep 21	W 6p-10p	\$39/\$24.65
	<i>Superior: 111</i>		<i>Nicholas Sawyer</i>
65528	Sep 28	W 6p-10p	\$39/\$24.65
	<i>Ashland: 203</i>		<i>Nicholas Sawyer</i>
65550	Oct 5	W 6p-10p	\$39/\$24.65
	<i>New Richmond: 1201</i>		<i>Instructor TBD</i>
65228	Oct 8	Sa 8:30a-12:30p	\$39/\$24.65
	<i>Rice Lake: 225</i>		<i>Diana Wymer</i>
65532	Oct 26	W 6p-10p	\$39/\$24.65
	<i>Superior: 111</i>		<i>Instructor TBD</i>
65529	Nov 10	Th 6p-10p	\$39/\$24.65
	<i>Ashland: 203</i>		<i>Instructor TBD</i>
65251	Dec 13	T 5:30p-9:30p	\$39/\$24.65
	<i>Rice Lake: 225</i>		<i>Judith Balog</i>
65530	Dec 15	Th 6p-10p	\$39/\$24.65
	<i>Ashland: 204</i>		<i>Instructor TBD</i>
65533	Dec 21	W 6p-10p	\$39/\$24.65
	<i>Superior: 111</i>		<i>Instructor TBD</i>

**CPR/AED/Basic First Aid-ASHI**

47-531-419

This course is a combined CPR/AED/ Basic First Aid program designed specifically for laypeople. The program is good for the community and the workplace setting. This course is designed to teach people the knowledge and skills that they need to recognize emergencies and perform CPR and use an AED and perform First Aid until EMS arrives. This course will certify a person for 2 years in CPR/AED/Basic First Aid. *This class can be taken if a refresher is needed also. This class will cover adult/child/infant skills.*

65548	Sep 17	Sa 9a-5p	\$44.69/\$16
	<i>New Richmond: 1201</i>		<i>Instructor TBD</i>
65549	Nov 8-Nov 9	TW 6p-10p	\$44.69/\$16
	<i>New Richmond: 1201</i>		<i>Instructor TBD</i>
65540	Nov 12	Sa 9a-5p	\$44.69/\$16
	<i>Balsam Lake: 106</i>		<i>Instructor TBD</i>
65522	Sep 24	Sa 8a-4:30p	\$44.69/\$16
	<i>Ashland: 427</i>		<i>Instructor TBD</i>
65525	Oct 1	Sa 8a-4:30p	\$44.69/\$16
	<i>Superior: 112</i>		<i>Instructor TBD</i>
65523	Oct 4-Oct 6	TTh 6p-10p	\$44.69/\$16
	<i>Ashland: 427</i>		<i>Nicholas Sawyer</i>
65227	Oct 8	Sa 8:30a-4:30p	\$44.69/\$16
	<i>Rice Lake: 225</i>		<i>Diana Wymer</i>
65526	Nov 28-Nov 30	MW 6p-10p	\$44.69/\$16
	<i>Superior: 112</i>		<i>Instructor TBD</i>

65524	Dec 3	Sa 8a-4:30p	\$44.69/\$16
	<i>Ashland: 427</i>		<i>Lynette Hoopman-Cornelius</i>
65250	Dec 13-Dec 14	TW 5:30p-9:30p	\$44.69/\$16
	<i>Rice Lake: 225</i>		<i>Judith Balog</i>

**Emergency Medical Responder**

47-531-486

This course is designed to present the student with basic life support skills that may be used at the scene of an accident or illness, until advanced level care and transport can be arranged. This class will include the review and revision of the Emergency Medical Responder (First Responder) curriculum with inclusion of the National Emergency Medical Services Education Standards. Textbooks required.

65790	Sep 6-Nov 15	T 6p-10p	\$289.71/\$31.50
	Sep 24	Sa 8:30a-4:30p	
	Oct 22	Sa 8:30a-4:30p	
	Nov 29	T 6p-10p	
	Dec 3	Sa 8:30a-4:30p	
	<i>New Richmond: 1602</i>		<i>Craig Nelson</i>
65791	Sep 19-Oct 24	M 6p-10p	\$289.71/\$31.50
	Oct 8	Sa 8:30a-4:30p	
	Nov 5	Sa 8:30a-4:30p	
	Nov 7-Nov 14	M 6p-10p	
	Nov 28-Dec 19	M 6p-10p	
	Dec 3	Sa 8:30a-4:30p	
	<i>Balsam Lake: 102</i>		<i>Marie Bernatz</i>

**EMT Refresher**

47-531-515

This 40 hour refresher will include the review and revision of the Emergency Medical Technician with inclusion of the National Emergency Medical Services Education Standards. This program is designed to serve as a refresher for Emergency Medical Technicians who have successfully completed the Emergency Medical Technician program. **PREREQUISITES:** Previous completion of a recognized Emergency Medical Technician program. Must also be 18 years of age. *\*Barnes class only: This course is a Blackboard course with one in-person skills date.*

64702	Sep 9-Sep 16	F 6p-10p	\$160.95/\$17.50
	Sep 10-Sep 18	SaSu 9a-5p	
	<i>Birchwood Fire Dept.</i>		<i>Marlene Dirkes</i>
64798	Oct 1-Nov 30	24/7	\$160.95/\$17.50
	Nov 5	Sa 8a-5p	
	<i>Barnes Ambulance Hall</i>		<i>Instructor TBD</i>

**PALS - Pediatric Advanced Life Support (Initial Provider)**

47-531-409

American Heart Association and American Academy of Pediatrics course designed for Advanced Life Support of Pediatric Emergencies and Illnesses. Prerequisite: EMT-I, EMT-P, RN, Physician. Prior



to attending the class, a pre-test must be taken and completed. That test is located on the AHA website. A link to that website is provided in the front of the Providerís manual. That manual must accompany the student to class. The student must print off a copy of their pre-test certificate and bring it to class with them.

Upon successful completion of this American Heart Association class will certify students who pass its cognitive and psychomotor exams in the infant and child resuscitation skills necessary to recognize and treat cardiac, respiratory, and shock emergencies in the pediatric setting. Students must take the PALS pre-test prior to the first day of class and bring their results along with the PALS Provider manual to class.

**65722** Oct 26 W 1p-5p \$199/\$155.96  
 Oct 27 Th 8a-5p  
*Rice Lake: 178 Crystal Thome*

**PALS-Pediatric Advanced Life Support (Renewal)**

47-531-410

American Heart Association and American Academy of Pediatrics course designed for Advanced Life Support of Pediatric Emergencies and Illnesses. Prerequisite: Current AHA PALS - Provider card. Prior to attending the class, a pre-test must be taken and completed. That test is located on the AHA website. A link to that website is provided in the front of the Providerís manual. That manual must accompany the student to class. The student must print off a copy of their pre-test certificate and bring it to class with them.

This American Heart Association class will update students on the 2020 AHA guidelines plus recertify them in the skills and competencies needed to manage an adult cardiovascular or cerebrovascular emergency. Students must pass both the cognitive exam and the psychomotor portions of the class to obtain their two year recertification. Students should complete the AHA pre-test prior to class and bring a copy of their test results along with their current PALS Provider manual to all sessions.

**65723** Oct 27 Th 8a-5p \$159/\$130.31  
*Rice Lake: 178 James Tinman*

Northwood Tech partners with **Ed2Go** to offer a wide range of highly interactive, fun, affordable, non-credit courses that you can take entirely online. A variety of Ed2Go classes are featured throughout this catalog. For a complete list of classes and start dates, please visit [bit.ly/northwoodtech\\_online](http://bit.ly/northwoodtech_online)

# MANUFACTURING, TECHNOLOGY & ENGINEERING

## Manufacturing

**Auto Mechanics for Mechanics**

47-404-411

Learn component identification, basic tune-up, oil change, fuel systems, basic electrical system troubleshooting, tires and suspension and drive line maintenance. Plan to work on your own vehicle in coordination with instructor.

**65352** Oct 12-Nov 16 W 1p-4p \$98.67/\$12.60  
 Nov 30-Dec 7 W 1p-4p  
*Superior: 117 Todd Asanovich*

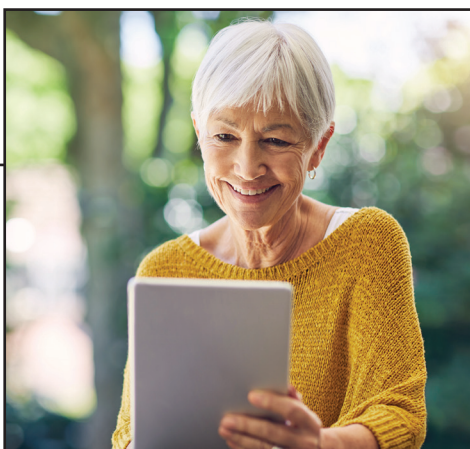
**Machine Tool Operation**

47-420-493

Gain the basic skills necessary to safely operate machine tool equipment at the beginning and intermediate levels. Through group lecture and demonstrations, learn safety, set ups, proper feeds, and speeds of machine tool equipment. An advanced lab opportunity is available for students demonstrating competency in safe operation of machines. You may be approved to work independently on selected vocational objectives with assistance from your instructor. Safety glasses required; work boots and ear protection recommended.

**65295** Oct 6-Nov 17 Th 5p-9p \$166.91/\$37.80  
 Dec 1-Dec 8 Th 5p-9p  
*Superior: 118 Paul Kalin*

**65296** Oct 6-Nov 17 Th 5:30p-9:30p \$166.91/\$37.80  
 Dec 1-Dec 8 Th 5:30p-9:30p  
*Ashland: 119 David Olson*





## Welding

47-442-406

Learn oxy-fuel, shielded metal arc, gas metal arc and gas tungsten arc welding processes. This course is designed for beginner or intermediate students who wish to advance their present skills. Individual projects need prior approval from instructor. Please bring a notebook, pliers, safety glasses, work boots, goggles and welding helmet to class. This course meets the 30 hour requirement for apprentices. \*Class size is temporarily limited and available only for students in need of professional development hours for workplace or plumbing apprenticeship related instruction requirements.

65298	Sep 23-Sep 30 Oct 14-Nov 18 Dec 2-Dec 23	F 6p-9p F 6p-9p F 6p-9p	\$179.51/\$50.40
	<i>Ashland: 118</i>		<i>Stephen Geiger</i>
65345	Sep 23-Nov 18 Dec 2-Dec 16	F 6p-9p F 6p-9p	\$179.51/\$50.40
	<i>Superior: 118</i>		<i>Paul Renman</i>
65300	Oct 4-Nov 15 Nov 29-Dec 13	T 5p-8p T 5p-8p	\$149.59/\$42
	<i>Spooner HS</i>		<i>Samuel Woods</i>
65297	Oct 7-Nov 18 Dec 2-Dec 9	F 4p-8p F 4p-8p	\$179.51/\$50.40
	<i>Rice Lake: 189</i>		<i>Ric Eckstein</i>

## Safety

### Safety Seminar

47-449-431

Machine Guarding for Manufacturing. This seminar will focus on identification and correction of the top hazards at manufacturing facilities: machine guarding and lockout/tagout. OSHA has an ongoing National Emphasis Program on amputations along with a newer, local emphasis program on Food Manufacturing for Wisconsin that will last for five years. The seminar will also address thermal burns from processing and chemical burns from sanitation, particularly food manufacturing. The goal of the seminar is to provide education for company Safety and Health leadership and professionals, and to support the Safety Teams' continuous improvement and safety management programs. Light snack included.

65804	Sep 21	W 10a-12p	\$25/\$17.83
	<i>Rice Lake: Conf Center</i>	<i>Guest Presenter</i>	

## TRANSPORTATION, DISTRIBUTION & LOGISTICS

### Driver Training

#### CDL B License - Behind the Wheel

47-458-407

The CDL Commercial Driver's License Class B course is designed to prepare students to earn a Class B License and operate straight trucks such as: short-haul delivery trucks, construction and excavating vehicles and trucks used in the sand mining, concrete, or other similar industries. Professional drivers are responsible for the safe and efficient delivery of goods. This course will prepare you for that through a driving simulator and behind-the-wheel activities. The course includes an introduction to the industry, vehicle inspections and systems overview, safe driving techniques, cargo documentation and employer/employee relations. The Class B License does not allow a driver to operate tractor-trailers or other combination vehicles. A student must have their Class B permit before starting this course.

Behind-the-Wheel Times will vary and will be determined between the instructor and the students.

65265	Aug 22-Dec 25	M-F 7a-7:30a	\$1550/\$1406.55
	<i>Balsam Lake: Parking Lot</i>	<i>John Murtha</i>	
65267	Aug 22-Dec 25	M-F 7a-7:30a	\$1550/\$1406.55
	<i>New Richmond: Parking Lot</i>	<i>Brian Hudson</i>	
65269	Aug 22-Dec 25	M-F 7a-7:30a	\$1550/\$1406.55
	<i>Rice Lake: Parking Lot</i>	<i>Janine Running</i>	

#### CDL Permit Prep Online

47-458-405

This is a self-study online course. You may study at your own pace for the written Commercial Driver's License Permit test. This is applicable to Class A or Class B students.

Are you interested in obtaining your Commercial Driver's License? Did you know that before learning how to drive a rig, you need to get a learning permit? Ensure that you are better prepared before attempting the CDL test when you visit your local DMV service center. If you prefer to learn with a schedule convenient for you, Northwood Tech also offers an online option. The online course is designed for you to progress at your own pace. Receive links to WI Commercial Driver's Manual (WI CDM), suggested readings and



Hatha Yoga

Pg 8

study aids, and sample tests which will help prepare you for the CDL Permit Exam. There are no deadlines other than you must be completed with all tests and activities before the end of the academic semester.

65383 Aug 22-Dec 25 24/7 \$69/\$18.79  
*Online Janine Running*

**Haz Mat Training**

47-458-412

This course meets the FMCSA standards for ELDT theory education for HazMat. Completion deadline is the end of each semester. If you are registering toward the end of the semester, consider waiting for the next session.

65804 Aug22-Dec 25 24/7 \$49  
*Online Brian Hudson*

**Truck Driving Simulator**

47-458-408

This course provides behind the wheel professional driver training for learners who already hold a CDL. The learner will enhance their existing driving skills plus refresh on industry regulations, trip planning, hours of service, driver safety, advanced operations, and technical backing skills.

Practice or refresh your truck driving skills on a state-of-the-art driving simulator. This two hour simulated driving experience provides a highly realistic, no-risk learning environment. Choose from a library of real-world options, including terrain, hazards, weather, and breakdown scenarios, along with several shifting options.

65273 Aug 22-Dec 25 M-F 7a-7:30a \$119/\$111.83  
*Rice Lake: 136 Janine Running*

**Truck Driving Theory Class A**

47-458-410

This course meets the FMCSA standards for ELDT theory education for Class A vehicles. Completion deadline is the end of each semester. If you are registering toward the end of the semester, consider waiting for the next session.

66094 Aug22-Dec 25 24/7 \$199/\$55.55  
*Online Brian Hudson*

**Truck Driving Theory Class B**

47-458-410

This course meets the FMCSA standards for ELDT theory education for Class B vehicles. Completion deadline is the end of each semester. If you are registering toward the end of the semester, consider waiting for the next session.

66095 Aug22-Dec 25 24/7 \$199/\$55.55  
*Online Brian Hudson*



**Motorcycle Courses**

**Basic Rider 1 & 3-Wheel Basic Rider**

Pg 7

# Featured Certificates 2022

## Gerontology for Healthcare Professionals Pathway certificate 12 credits

You will be able to directly apply your acquired theory, knowledge and practical skills within a variety of professional settings. This pathway certificate is designed to enhance the education and experience of practitioners who work directly with older adults in healthcare and clinical settings, community-based programs, residential facilities, and private or for-profit business and industry.

10544100	Communication of Aging	3 credits
10544101	Social Gerontology	3 credits
10544105	Alzheimer's and Dementia	3 credits
10544110	Programs of Aging Services	3 credits

## Livestock Production Pathway certificate 9 credits

The Livestock Production pathway certificate will give you the fundamentals of livestock management and husbandry along with an understanding of nutrition. Coupled with a class in farm records and analysis, you will complete this program with the skill set to manage and make critical decisions surrounding the day-to-day business of a livestock operation.

31080373	Livestock Nutrition	3 credits
31080374	Livestock Management	3 credits
31080375	Farm Records and Analysis	3 credits

## Management Certificate Technical certificate 11 credits

The Management Certificate is a series of courses to develop the practical skills for dealing with the day-to-day management of a business or organization.

10116100	Human Resource Management	3 credits
10116105	Employee Relations and Labor Law	2 credits
10196136	Safety in the Workplace	3 credits
10196192	Managing for Quality	3 credits

## Nonprofit Essentials Pathway certificate 15 credits

As a student in the Nonprofit Essentials career pathway program, you will explore the role of nonprofit organizations, develop volunteer and Board relationships and coordinate grant and fundraising strategies. Graduates of this certificate can find work with assisted living centers, hospice and home care agencies, childcare programs, domestic abuse and homeless shelters and many more nonprofit organizations, both locally and nationally.

10104189	Social Media Marketing	3 credits
10196123	Grant Writing and Management	2 credits
10196127	Fundraising and Event Planning	3 credits
10196131	Fundamentals of Nonprofit Management	3 credits
10196149	Dynamics of Board Relations	1 credits
10196158	Managing Volunteers	2 credits
10196159	Nonprofit Field Experience	1 credits

## Personal Care Worker Technical certificate 1 credit

The Personal Care Worker (PCW) course is a combination of online coursework coupled with a final 8-hour lab session with the course instructor. The online portion of the course is directed through a series of eight learning plans that carefully detail learning activities to help students learn the course content. Upon completion of the learning activities, students will contact the campus contact to schedule an 8-hour lab session that concludes with skill competency testing and the final written exam. The lab sessions are held on Saturdays and scheduled at the various Northwood Tech campuses (Ashland, New Richmond, Rice Lake, and Superior).

30510308	Personal Care Worker	1 credit
----------	----------------------	----------

Contact your local campus Student Services office for more information and registration details about any certificate. Visit [www.northwoodtech.edu/certificate](http://www.northwoodtech.edu/certificate) for the full list of offered certificates. *\*Academic support services are available.*



## Categories:

Map your employee training. Take one— take them all! Mix and match all 18 badges in the three categories.

### Supervision

- Roles and Responsibilities
- Outcome Management
- Planning Skills
- Teambuilding Skills
- Problem Solving Skills
- Performance Management

### Team Building & Problem Solving

- Group Decision Making
- Stages of Team Development
- Systematic Problem Solving
- Constructing Solutions
- Solution Implementation
- Conducting Team Meetings

### Personal Skills for Supervisors

(Available April 25, 2022)

- Goal Setting
- Communication
- Time Management
- Stress Management
- Change Management
- Interpersonal Skills



NorthwoodTech.edu

## Employee Leadership Skills

—Verified through digital badges!

### Invest in your leaders

Enhance your employees' leadership skills through professional development.

### Consistent skill development

Same practical, real-world skills for all employees no matter when they are trained.

### Microlearning

Small focused segments of learning. Pre-work, eight hours of content delivery and post-work per badge.

### Choose the delivery method that works best for your staff

Choose in person, web conferencing or online class delivery.

### BONUS!

Individuals who earn all 18 badges earn nine undergraduate credits – just one course away from earning the **Leadership Essentials Technical Diploma**.



Co-branding the badge is available. Ask for more details.

**For more information or to schedule your training, contact your regional associate dean!**

#### Dan Miller

Associate Dean, Workforce and Community Development  
Serving Ashland, Bayfield, Douglas and Iron counties

715.319.7335 | dan.miller@northwoodtech.edu

#### Liz Pizzi

Associate Dean, Workforce and Community Development  
Serving Burnett, Polk and St. Croix counties

715.752.8127 | liz.pizzi@northwoodtech.edu

#### BJ Williams

Associate Dean, Workforce and Community Development  
Serving Barron, Rusk, Sawyer and Washburn counties

715.788.7046 | bj.williams@northwoodtech.edu

## REGISTRATION INFORMATION

---

# It's Easy to Register!

**ONLINE** Register and submit your credit card payment online at [northwoodtech.edu](http://northwoodtech.edu). Then click, 'Find a Class'.

**PHONE** Register by phone using a credit card.

**MAIL** Fill out the registration and mail it with your payment to the appropriate campus. Your registration must be received before you begin courses.

## Registration Locations

### Northwood Tech

2100 Beaser Ave, Ashland, WI 54806  
715.682.4591

### Northwood Tech

1019 S. Knowles Ave, New Richmond, WI 54017  
715.246.6561

### Northwood Tech

1900 College Drive, Rice Lake, WI 54868  
715.234.7082

### Northwood Tech

600 N. 21<sup>st</sup> Street, Superior, WI 54880  
715.394.6677

### Northwood Tech Outreach Center

400 Polk County Plaza  
Balsam Lake, WI 54810  
715.485.3044

### Northwood Tech Outreach Center

15618 Windrose Ln. Suite 106  
Hayward, WI 54843  
715.634.5167

### Northwood Tech Outreach Center

1104 Lake Avenue Suite 1  
Ladysmith, WI 54848  
715.532.3399

## REGISTRATION POLICIES

### Nondiscrimination Notice

Northwood Technical College is an equal opportunity employer/educator functioning under the affirmative action plan. Northwood Technical College does not discriminate on the basis of race, color, ancestry, religion, sex, service in the uniformed services, veteran status, national origin, age, disability, sexual orientation, marital or family status, pregnancy, pregnancy-related conditions or status in any group protected by federal, state or local law in employment, admissions or its programs, services or activities, including but not limited to admissions, treatment and access. The following person has been designated to handle inquiries regarding the nondiscrimination policies: Amanda Gohde, Director, Human Resources, Equal Opportunity/Access & Affirmative Action Officer, 1900 College Drive, Rice Lake WI 54868, 715-645-7042, [Amanda.Gohde@northwoodtech.edu](mailto:Amanda.Gohde@northwoodtech.edu).

### Accommodations for Persons With Disabilities

Reasonable accommodations for persons with disabilities will be made to ensure access to academic programs, activities, services and employment in accordance with 504 of the Rehabilitation Act of 1973, the Americans With Disabilities Act of 1990 and the Americans with Disabilities Act (ADA) Amendments Act of 2008. If accommodations are needed, the student should contact the campus Accommodations Specialist or Amanda Gohde, Director, Human Resources, Equal Opportunity/Access & Affirmative Action Officer, at 715.645.7042, 30 days in advance of needed assistance.

### Senior Fees

Northwood Technical College has implemented a waiver for students ages 62 plus. This waiver is for personal enrichment courses only (the catalog number begins with 60) and provides up to a 40% discount. (Amount varies based on material fees.) Students age must be 62 plus at the start of the term (6/1 for summer, 8/29 for fall, 12/24 for spring). Students ages 62 plus who are enrolled in professional courses (catalog number begins with 42 or 47) are still exempt from program fees under State Statute 38.24 (1)(b) and only required to pay material fees, which is approximately \$4.50 for many courses.

# ARE YOU AN ALUM?



Follow the Alumni Community on Facebook:  
[@NorthwoodTechAlumni](https://www.facebook.com/NorthwoodTechAlumni)



Sign up for the e-newsletter:  
[bit.ly/northwoodtechalum](http://bit.ly/northwoodtechalum)



Make a difference; give today:  
[northwoodtech.edu/donate](http://northwoodtech.edu/donate)





**Northwood**  
Technical College

# REGISTRATION FORM

For Continuing Education (non-credit) Courses

\_\_\_\_\_  
Last Name                      First Name                      M.I.                      Former Last Name (if applicable)                      Date of Birth

Student ID No. \_\_\_\_\_ No student ID, or don't remember? Provide Social Security No. \_\_\_\_\_  
\*Why do we ask for SSN? NorthwoodTech.edu/SSN

I've taken classes at Northwood Technical College and/or WITC in the past.

\_\_\_\_\_  
Email address (required as email is primary method of communication by the college)

\_\_\_\_\_  
Home phone                      Cell phone

\_\_\_\_\_  
Home address

\_\_\_\_\_  
City                      State                      ZIP Code

Resident of (check one): Township Village City                      County                      School District

Last high school attended: \_\_\_\_\_

Highest grade COMPLETED (K-12): \_\_\_\_\_

The following information is required for state and federal reporting purposes and will be kept confidential.

**Gender:** Male Female

**Ethnicity:** Hispanic/Latino origin? Yes No

**Race (check all that apply):**

- American Indian/Alaska Native
- Asian
- Black/African American
- Native Hawaiian/Other Pacific Islander
- White

OFFICE USE ONLY	
Term _____	
Received by _____	
Date registration entered _____	

**Highest Credential Earned**

- No Credential
- GED
- HSED
- High School Diploma
- Some college credit
- Short-term diploma or certificate
- 1yr Diploma
- 2yr Diploma
- Associate Degree
- Associate Degree  
    Plus Additional Credential
- Baccalaureate
- More than Baccalaureate
- Student Declined/Unknown

It is your responsibility to contact Northwood Tech to officially drop a class. If you decide to drop, you should do so immediately as a single day can affect your refund amount. A full refund will be given if you notify Northwood Tech prior to the first scheduled class meeting.

CLASS NO.	CATALOG NO.	CLASS TITLE	LOCATION	START DATE	CLASS FEE
Once registered for a course(s), you have created a liability with Northwood Tech and a promise to pay.					<b>TOTAL</b>

A full detailed Annual Security Report can be located at the following link: [www.northwoodtech.edu/annualsecurityreport](http://www.northwoodtech.edu/annualsecurityreport)  
Northwood Tech is an Equal Opportunity/Access/Affirmative Action/Veterans/Disability Employer and Educator.

**Traffic-Related Registration:** Motorcycle, Traffic Safety, Group Dynamics, Multiple Offender

Driver's License Number \_\_\_\_\_ Assessment Agency and Date \_\_\_\_\_

**Youth Registration:** With parent/guardian approval, Northwood Tech courses are open to students age 16 or younger when the course meets outside student's normal school hours. Some courses may have minimum age prerequisites.

Parent/Legal Guardian name: \_\_\_\_\_ (please print)                      Signature: \_\_\_\_\_                      Date: \_\_\_\_\_

**Agency Bill/Sponsored Registration:** If an agency or employer has agreed to pay your tuition, provide organization name, signature and attach written authorization.

Name of Business/Agency or EMS/Fire Sponsor: \_\_\_\_\_

I authorize Northwood Tech to forward information regarding the completion of this course to the sponsor listed on the line above.

Student Signature \_\_\_\_\_ 07.23.21

PAYMENT METHOD: <input type="checkbox"/> Check/money order payable to Northwood Technical College CK # _____ <input type="checkbox"/> Cash <input type="checkbox"/> Agency bill (complete section above)	
<input type="checkbox"/> Credit Card No. _____ (Mastercard/Visa/Discover)	Exp. Date _____ Security Code _____ (month/year)
Name on Card _____	Cardholder Signature _____



Northwood Technical College  
1900 College Drive  
Rice Lake, WI 54868

# FALL 2022 CALENDAR

Look inside online at [bit.ly/northwoodtechCEevents](https://bit.ly/northwoodtechCEevents) for full descriptions & details.

- **Safety Seminar: Machine Guarding for Manufacturing**  
Sept 21 | Rice Lake  
*Seminar on identification and correction of the top hazards at manufacturing facilities.*
- **New Richmond Regional Caregiver Conference**  
Sept 23 | New Richmond -or- Online Live  
*Educational conference for family caregivers and professionals.*
- **Non-Profit Leadership Clinic**  
Oct 14 | Ashland Conference Center  
*A workshop in partnership with Ashland Area Development Corp.*
- **3 Ways to Improve Allyship**  
Oct 25 | Online Live  
*A workshop to help shape your work culture to be more welcoming and inclusive.*
- **Rice Lake Caregiver Conference**  
Oct 28 | Rice Lake -or- Online Live  
*Educational conference for family caregivers and professionals.*
- **CMA CE Conference**  
Oct 29 | Online Live  
*Providing new information on current trends in healthcare.*
- **Sawyer County Regional Caregiver Conference**  
Nov 15 | Hayward -or- Online Live  
*Educational conference for family caregivers and professionals.*

Register early as events fill quickly!