

Northwood Tech First in Training Solutions Continuing Education

Professional Development / Life & Leisure

Spring 2023

page 6

Spring Garden Expo

page 8

Google Docs Intro

page 12

Basic Web Design

page 17

Ethics & Boundaries



Northwood
Technical College

ASHLAND • NEW RICHMOND • RICE LAKE • SUPERIOR
BALSAM LAKE • HAYWARD • LADYSMITH

NORTHWOODTECH.EDU

NORTHWOOD TECH Continuing Education

PROFESSIONAL DEVELOPMENT / LIFE & LEISURE

Welcome to Northwood Tech's Spring 2023 Continuing Education catalog. Inside you will find a variety of informative and exciting Professional Development and Life & Leisure courses, designed to enhance your learning experience. We are pleased to continue to provide these learning opportunities for you! Courses are offered in a variety of instructional formats, including:

On Site

These courses are offered in person at a variety of campus locations throughout the district, providing face to face instruction and interaction with the instructor.

Online Live

These courses are offered during a specific time period that can be accessed from your home or office computer or tablet using free web-conferencing software. You will receive log-in information about 1 - 3 days prior to class through the email address you provide when you register. Your computer must have a reliable internet connection, microphone and camera. You can interact with the teacher during the class.

Online

These courses are offered via the Internet and accessed by using a web browser. You can access the course at any time. Offline supervised tests/exams at specified sites may be conducted in conjunction with these courses.

It's Easy to Register!

ONLINE | PHONE | MAIL

For complete registration information, please see page 30.

YOUR INVESTMENT, THEIR FUTURE



The **Northwood Tech Foundation**

Mission is to encourage the success and achievement of Northwood Tech students, staff, faculty and alumni.

Our students are pursuing an education for a chance at a better life – for themselves and for their families. Together, we help them achieve their dreams. For information on how you can take part in this mission & support students in your area, visit: northwoodtech.edu/foundation

LIFE & LEISURE pgs 4 - 8

- Art
- Driver Safety
- Financial Management
- Gardening
- Language
- Manufacturing & Technology
- Motorcycle
- Physical Education
- Wellness

COMPUTERS & TECHNOLOGY pgs 8 - 12

- Computer Software
- Technology for Personal Use
- Web-based Tools

BROADBAND pgs 12 - 13

- Broadband

COSMETOLOGY pg 13

- Cosmetology

EARLY CHILDHOOD EDUCATION pg 14

- Child Care

BUSINESS, FINANCE & LEADERSHIP pgs 15 - 17

- Business
- Insurance
- Insurance CE
- Real Estate

HEALTH & HUMAN SERVICES pgs 17 - 19

- Professional Caregiver CEU
- Caregiving
- Medical Assistant

LAW, PUBLIC SAFETY & SECURITY pgs 19 - 24

- Emergency Medical Services

MANUFACTURING, TECHNOLOGY & ENGINEERING pgs 24 - 25

- Manufacturing
- Safety
- Welding

TRANSPORTATION, DISTRIBUTION & LOGISTICS pgs 25 - 26

- Driver Training



We offer training for

Firefighters

INTERESTED?

Contact Michelle

Michelle.Marshall@northwoodtech.edu

715.246.1877

LIFE & LEISURE

Art

Art: Pastels-Paint Landscapes

60-815-605

In this three-session weekly class, paint along with the instructor as she shares many examples and demonstrates using dry pastel sticks (not oil pastels) on various types of pastel paper. Use your own photos of your favorite, beloved landscapes for inspiration. You will focus on different art elements in each session to plan your composition. These include line, shape, color, space, and texture. The instructor's subject matter will cover various seasons, but you may focus on any season. You'll have the opportunity to share your work in class. Some drawing experience is helpful.

25129 Apr 17-May 1 M 3p-4:30p \$39.75/\$25.65
Online Live Diana Randolph

Drawing for the Absolute Beginner

Gain a solid foundation in the basics of drawing to become the artist you've always wanted to be. This course will help you become familiar with paper type, drawing styles, techniques, and basic principles of perspective, layout and design. Ed2Go is the online delivery platform for this class and all tech support and class assistance is handled directly through Ed2Go. Register and pay via Ed2Go at northwoodtech.edu/continuing-education-and-training/professional-development/online-classes

N/A Start dates vary \$100
Online Ed2GoStaff

Introduction to Digital Scrapbooking

Make the most of your scrapbooking talents to show off your photos and memorabilia with digital scrapbooking. Build scrapbook pages, use artistic journaling and produce your own artwork with Photoshop Elements. Ed2Go is the online delivery platform for this class and all tech support and class assistance is handled directly through Ed2Go. Register and pay via Ed2Go at northwoodtech.edu/continuing-education-and-training/professional-development/online-classes

N/A Start dates vary \$100
Online Ed2GoStaff

Introduction to Interior Design

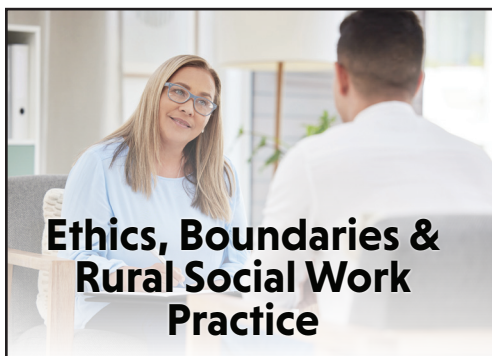
Learn to transform plain living spaces into beautiful and functional rooms. This course will teach you how to design every aspect of a room while taking into account color theory, industry trends, special arrangements, floor plans, design ideas, and interior design basics. Ed2Go is the online delivery platform for this class and all tech support and class assistance is handled directly through Ed2Go. Register and pay via Ed2Go at northwoodtech.edu/continuing-education-and-training/professional-development/online-classes

N/A Start dates vary \$115
Online Ed2GoStaff

Photographing Nature with Your Digital Camera

Discover how your nature photos can become works of art rather than just snapshots. This course will help you explore composition and lighting as you master your digital camera's controls and features to take exceptional nature photos in no time. Ed2Go is the online delivery platform for this class and all tech support and class assistance is handled directly through Ed2Go. Register and pay via Ed2Go at northwoodtech.edu/continuing-education-and-training/professional-development/online-classes

N/A Start dates vary \$100
Online Ed2GoStaff



Ethics, Boundaries & Rural Social Work Practice

Jan 20 | Online Live

The four-hour workshop will discuss the specific challenges and considerations with ethical social work practice in rural settings.

For more information, visit bit.ly/ethicsboundaries_2023

Secrets of Better Photography

Learn to take outstanding photos and get the best results whether you are using a DSLR, a point-and-shoot, or your phone camera. Each lesson contains exercises and assignments that will help you apply new techniques to your own camera and make a distinctive difference in your photos. Ed2Go is the online delivery platform for this class and all tech support and class assistance is handled directly through Ed2Go. Register and pay via Ed2Go at northwoodtech.edu/continuing-education-and-training/professional-development/online-classes

N/A	Start dates vary	\$100
	Online	Ed2GoStaff

Driver Safety

Driver Education - Theory

42-812-401

Students gain awareness of the driving task and the responsibilities that accompany it. They demonstrate knowledge of traffic laws and regulations that help provide safe and efficient patterns. Students understand the impact that natural forces and conditions have concerning driving. They learn to identify hazardous conditions and react appropriately to avoid or minimize problems. Students develop an attitude of safe, courteous, and defensive driving. **Please note - This is an online class with specific assignments to be completed each of the six weeks. Assignments open each Monday morning, and students can work on their assignments anytime throughout the week but must have the assignments completed by Sunday evening.

24384	Jan 16-Feb 26	24/7	\$120
	Online		Jordee Reimer
24385	Jan 16-Feb 26	24/7	\$120
	Online		Jordee Reimer
24386	Jan 16-Feb 26	24/7	\$120
	Online		Jordee Reimer
24387	Feb 27-Apr 9	24/7	\$120
	Online		Jordee Reimer
24388	Feb 27-Apr 9	24/7	\$120
	Online		Jordee Reimer
24389	Feb 27-Apr 9	24/7	\$120
	Online		Jordee Reimer
24390	Apr 10-May 22	24/7	\$120
	Online		Jordee Reimer
24391	Apr 10-May 22	24/7	\$120
	Online		Jordee Reimer
24392	Apr 10-May 22	24/7	\$120
	Online		Jordee Reimer

Traffic Safety for Point Reduction

42-812-404

Participants of the Traffic Safety course will examine their driving behavior and review traffic laws and penalties. Emphasis will be placed on ways to drive responsibly. The Traffic Safety class will show participants how to develop a change plan to reduce their risk of traffic violations and crashes. Students who successfully complete this Traffic Safety class may be eligible to receive a three-point reduction from their driving record. This class also meets the requirements for anyone that has received a "Failure to Yield Right of Way Violation" 2011 Wisconsin Act 173-346.18.

24656	Feb 18-Feb 25	Sa 8a-2p	\$75.54/\$32.50
	Rice Lake: 214		Timothy Smith
24655	Mar 11-Mar 18	Sa 8a-2p	\$75.54/\$32.50
	Ashland: 204		Timothy Smith
24654	Apr 15-Apr 22	Sa 8a-2p	\$75.54/\$32.50
	Superior: 136		Timothy Smith
24658	May 6-May 13	Sa 8a-2p	\$75.54/\$32.50
	New Richmond: 1210		Timothy Smith
24657	May 20	Sa 8a-2p	\$75.54/\$32.50
	Jun 3	Sa 8a-2p	
	Rice Lake: 214		Timothy Smith

Financial Management

ABC's & Ds Medicare

47-162-478

Are you nearing Medicare age? Do you have questions about Medicare options and enrollment? Are you responsible for someone else's healthcare decisions? If so, this short seminar is for you. Join us to gain a fundamental understanding of the elements of Part A (Hospital Insurance), Part B (Medical Insurance), Part C (Medicare Advantage), and Part D (Medicare Drug Coverage) as it relates to consumers. Learn about initial enrollment options and additional enrollment periods as they pertain to the Medicare Plan types.

25765	Feb 7	T 6p-8p	\$11.67/\$4.50
	Online Live		Dan Conrad
25766	Apr 11	T 6p-8p	\$11.67/\$4.50
	Online Live		Dan Conrad



Welding | Pg 25

Personal Finance

Set clear financial goals, make the right investments, increase financial security and be prepared to retire someday. Gain control over the financial impact of your choices with tools that are useful, realistic, and easy to work into your regular routine. Ed2Go is the online delivery platform for this class and all tech support and class assistance is handled directly through Ed2Go. Register and pay via Ed2Go at northwoodtech.edu/continuing-education-and-training/professional-development/online-classes

N/A Start dates vary \$115
 Online Ed2GoStaff

Wills and Trusts

47-102-441

Understand what your current estate plan will achieve for you, how to avoid probate of your assets, and reduce or eliminate taxes to the extent possible. You will also learn how to effectively pass on your assets in the way that you desire.

25116 Apr 10 M 1p-3p \$11.67/\$4.50
 Online Live Susan Miley

Gardening

Growing Plants for Fun and Profit

Turn your love of plants into an enjoyable and profitable home business. This course provides information on licensing, site preparation, equipment, how and where to find supplies, how to select and produce plants, how to produce quality material, and how to market your product. Ed2Go is the online delivery platform for this class and all tech support and class assistance is handled directly through Ed2Go. Register and pay via Ed2Go at northwoodtech.edu/continuing-education-and-training/professional-development/online-classes

N/A Start dates vary \$100
 Online Ed2GoStaff

Spring Garden Expo **NEW!**

47-001-415

Get ready for gardening season with the Barron County Master Gardener volunteers at this all-day garden expo. Lisa Hinzman Howard will present Cheap Tricks: because you don't need to spend a fortune for fabulous. Explore using found items in unique, beautiful, funky and whimsical ways in the garden. Learn how to take it a step further and follow the seasons sharing tricks to use in your garden all year round. Lisa will also present everything you need to know about growing clematis. Horticultural Extension Educator Diana Alfuth will talk about garden pests, from Japanese beetles to squash borers, and from powdery mildew to tomato blight. The final presenter is Dora Wood of Home Oasis Farm, Chippewa Falls. Learn to enjoy beauty and bounty from the same space, with edible perennials. Lunch included.

25498 Apr 1 Sa 9a-3p \$50/\$35.65
 Rice Lake: Conf Center Guest Presenters

Language

Discover Sign Language

Gain confidence in your ability to sign with the Deaf community. This course immerses you in silence to help you gain an understanding of the perspective of the hearing impaired and uses videos to demonstrate not only how to make signs, but how to communicate with facial expression. Ed2Go is the online delivery platform for this class and all tech support and class assistance is handled directly through Ed2Go. Register and pay via Ed2Go at northwoodtech.edu/continuing-education-and-training/professional-development/online-classes

N/A Start dates vary \$100
 Online Ed2GoStaff

Speed Spanish

Learn six easy recipes to glue Spanish words together into sentences, and you'll be engaging in conversational Spanish in no time. Ed2Go is the online delivery platform for this class and all tech support and class assistance is handled directly through Ed2Go. Register and pay via Ed2Go at northwoodtech.edu/continuing-education-and-training/professional-development/online-classes

N/A Start dates vary \$115
 Online Ed2GoStaff



Social Media for Business | Pg 12
Canva for Business

Manufacturing & Technology

Auto Maintenance for Women

60-404-610

Do you feel prepared and safe in the case that you get a flat tire or your battery fails? Learn how to plan ahead for unknowns on the road and understand how some basic auto maintenance skills can apply to most vehicles. In this safe, team-oriented environment, learn basic safety skills, how to change oil, use jumper cables, jack and change a tire, and check fluids. Please wear close-toed shoes and clothing which can become stained.

25412 Apr 4-Apr 13 TTh 6:30p-8:30p \$51.50/\$32.70
 Superior: 117 Todd Asanovich

Basic Vehicle Maintenance **NEW!**

60-404-610

Are you a first-time vehicle owner? Do you wish to learn more about maintaining the basic aspects of your vehicle? This is a great way to learn in a safe and comfortable professional setting. Learn how to check and maintain fluid levels, change bulbs and wipers, check and maintain tires, and change a tire.

25102 Feb 8 W 6p-8p \$16.25/\$11.55
 New Richmond: 1211 Jade Peckels

Motorcycle

Motorcycle - Basic Rider 1

42-816-400

This 16-hour course is approved by the Department of Transportation. It is designed to teach the beginner or experienced rider the safe techniques to riding a motorcycle. It consists of 6 hours of classroom and 10 hours of on-cycle instruction. For pre-class instructions, please go to bit.ly/northwoodtech_motorcyclesafety

25692 Apr 15-Apr 16 SaSu 8a-5p \$263.45
 New Richmond: 1604 Richard Richter

25752 Apr 15-Apr 16 SaSu 8a-5p \$263.45
 Rice Lake: 1604 Cody Sandmann

25695 Apr 22-Apr 23 SaSu 8a-5p \$263.45
 New Richmond: 1604 John Wright

25753 Apr 22-Apr 23 SaSu 8a-5p \$263.45
 Rice Lake: 1208 Judith Anderson

25697 Apr 29-Apr 30 SaSu 8a-5p \$263.45
 New Richmond: 1604 John Wright

25754 Apr 29-Apr 30 SaSu 8a-5p \$263.45
 Rice Lake: 1208 Judith Anderson

25747 May 6-May 7 SaSu 8a-5p \$263.45
 New Richmond: 401 John Wright

25755 May 6-May 7 SaSu 8a-5p \$263.45
 Rice Lake: 401 Judith Anderson

25757 May 6-May 7 SaSu 8a-5p \$263.45
 Superior: 401 Richard Richter

25750 May 13-May 14 SaSu 8a-5p \$263.45
 New Richmond: 401 John Wright

25759 May 13-May 14 SaSu 8a-5p \$263.45
 Ashland: 401 Richard Richter

25751 May 20-May 21 SaSu 8a-5p \$263.45
 New Richmond: 126 John Wright

25756 May 20-May 21 SaSu 8a-5p \$263.45
 New Richmond: 1604 Judith Anderson

25758 May 20-May 21 MT 8a-5p \$263.45
 Superior: 427 Todd Ruprecht

Physical Education

Hatha Yoga

60-807-628

Hatha Yoga is a very gentle style of yoga that combines stretching (postures) with breath work and meditation. Benefits include improved flexibility, mobility, strength, circulation, relaxation, balance, energy, etc. Yoga helps to bring awareness and trust to your body, calmness to your restless mind and joy to your spirit. Please bring your own mat, a blanket, two yoga blocks and a 6-8 foot strap. As always, please check with your physician before starting this or any other exercise class.

25059 Jan 2-Feb 6 M 9a-10a \$39.75/\$25.65
 Online Live Mary Jirik

25060 Jan 3-Feb 7 T 9a-10a \$39.75/\$25.65
 Online Live Mary Jirik

25061 Jan 4-Feb 8 W 9a-10a \$39.75/\$25.65
 Online Live Mary Jirik

25062 Jan 5-Feb 9 Th 9a-10a \$39.75/\$25.65
 Online Live Mary Jirik

25063 Feb 20-Mar 27 M 9a-10a \$39.75/\$25.65
 Online Live Mary Jirik

25064 Feb 21-Mar 28 T 9a-10a \$39.75/\$25.65
 Online Live Mary Jirik

25065 Feb 22-Mar 29 W 9a-10a \$39.75/\$25.65
 Online Live Mary Jirik

25066 Feb 23-Mar 30 Th 9a-10a \$39.75/\$25.65
 Online Live Mary Jirik

25067 Apr 10-May 22 M 9a-10a \$51.50/\$32.70
 Online Live Mary Jirik

25068 Apr 11-May 23 T 9a-10a \$51.50/\$32.70
 Online Live Mary Jirik

25069 Apr 12-May 24 W 9a-10a \$51.50/\$32.70
 Online Live Mary Jirik

25070 Apr 13-May 25 Th 9a-10a \$51.50/\$32.70
 Online Live Mary Jirik

Wellness

Balance Your Loaded Life **NEW!**

60-560-610

Are you experiencing stress overload as a caregiver? Whether you are a family caregiver or in a service profession, caring compassionately is both an honor and very hard work. Caregiving may stress and strain your body, mind and emotions. The good news is that there are effective means of coping with this special type of stress. Learn from an experienced caregiver and clinician, Gigi Stafne, about proven naturopathic and herbal supports to add to your daily routine for wellness. Attend either in person at the Rice Lake campus or virtually via BlueJeans. Pre-registration required; details will be emailed to you prior to class start.

25784	Mar 1 <i>Rice Lake: TBD</i>	W 1p-3p	\$16.25/\$11.55 <i>Gigi Stafne</i>
25785	Mar 1 <i>Online Live</i>	W 1p-3p	\$16.25/\$11.55 <i>Gigi Stafne</i>

Lucious, Low-Fat, Lighting Quick Meals

Learn to create delicious and nutritious meals by reducing fat without sacrificing flavor. Gain tips on menu planning and quicker cooking, while trying out over 50 exciting lower-fat recipes. Ed2Go is the online delivery platform for this class and all tech support and class assistance is handled directly through Ed2Go. Register and pay via Ed2Go at northwoodtech.edu/continuing-education-and-training/professional-development/online-classes

N/A	Start dates vary <i>Online</i>	\$100 <i>Ed2GoStaff</i>
-----	-----------------------------------	----------------------------



Spring Garden Expo

Apr 1 | Pg 6

Winter Wellness **NEW!**

60-560-610

Living Well Late Winter. Does ol' man winter feel like it is dragging out and depleting you? Late winter season can be a time of feeling either anxious or a bit blue. What can you do? Liven up your life with some stress-reducing foods, winter lifestyle tips, and herbs for health and happiness. Join longtime clinician and natural medicine educator, Gigi Stafne, for this uplifting class. Attend either in person at the Rice Lake campus or virtually via BlueJeans. Pre-registration required; details will be emailed to you prior to class start.

25782	Feb 1 <i>Rice Lake: TBD</i>	W 1p-3p	\$16.25/\$11.55 <i>Gigi Stafne</i>
25783	Feb 1 <i>Online Live</i>	W 1p-3p	\$16.25/\$11.55 <i>Gigi Stafne</i>

COMPUTERS & TECHNOLOGY

Computer Software

Excel Beginning

60-103-602

You will be amazed at what Excel can do for you! Learn how to create worksheets for work and personal use. Understand the basics of navigating through the cells, formatting and setting up a spreadsheet for maximum efficiency. You will see how easy it is to have your numbers calculated for you in just seconds and how to sort through long, ponderous lists with absolute ease. There will be plenty of time to practice and ask questions. Basic computer skills required.

25563	Mar 1-Mar 15 <i>Online Live</i>	W 5:30p-7:30p	\$39.75/\$25.65 <i>Melissa Turngren</i>
-------	------------------------------------	---------------	--

Google Docs Intro **NEW!**

60-107-602

Google Docs is one of the top word processing apps for both individual and collaborative use. Google Docs is comparable to Microsoft Word but it is completely free to use! In this class, we'll take a close look at what Google Docs has to offer along with comparing it side by side with Microsoft Word.

25617	Apr 26 <i>Online Live</i>	W 4p-6p	\$16.25/\$11.55 <i>Sara Reimann</i>
-------	------------------------------	---------	--

Google Sheets Intro NEW!

60-107-602

Learn about Google Sheets; it has the best features from Microsoft Excel, and it is completely free to use with a Gmail account! Google Sheets has nearly all the functions as Excel, including data management, plots, graphs, charts and even advanced features like pivot tables and macros. Google Sheets is a collaborative document so you can work together with other people in the same file without having to manually save and share.

25616	Mar 14	T 1p-3p	\$16.25/\$11.55
	<i>Online Live</i>		<i>Sara Reimann</i>

Introduction to InDesign CC

Learn how to use Adobe InDesign CC software to create professional-quality letterhead, brochures, forms, eBooks, business materials and more. Hands-on exercises and expert instruction will help you discover how the program features relate to producing actual usable documents. Ed2Go is the online delivery platform for this class and all tech support and class assistance is handled directly through Ed2Go. Register and pay via Ed2Go at northwoodtech.edu/continuing-education-and-training/professional-development/online-classes

N/A	Start dates vary		\$115
	<i>Online</i>		<i>Ed2GoStaff</i>

Mac Basics

60-107-602

Your Mac includes macOS, the world's most advanced desktop operating system. macOS includes features and apps you'll use each day, and it enables your Mac, iPhone, iPad, iPod touch, and Apple Watch to work together. During this class, you will learn about the desktop, customizing your Mac, Apple ID and iCloud, using your Apple devices together, explore other Apps, find music and apps, create files, protect your data, explore the Mac hardware and much more!

25614	May 2	T 1p-3p	\$16.25/\$11.55
	<i>Online Live</i>		<i>Sara Reimann</i>

Microsoft OneDrive

47-103-409

OneDrive is an online personal storage that you get when you set up a Microsoft account to use services such as Outlook.com Use OneDrive to save documents, photos and other files in the cloud, share them with friends and even collaborate on the content.

25589	Feb 22	W 11:30a-1p	\$19/\$11.83
	<i>Online Live</i>		<i>Sara Reimann</i>

Microsoft OneNote

47-103-409

OneNote is a digital notebook that automatically saves and syncs your notes as you work. OneNote is available on Windows or Mac as well as your smartphone and tablets. Instead of grabbing a piece of paper and a pen to jot down notes, simply use your device instead.

25590	Mar 8	W 11:30a-1p	\$19/\$11.83
	<i>Online Live</i>		<i>Sara Reimann</i>

Microsoft Teams Intro

47-103-410

Learn the basics of Teams! Chat, meetings, teams, and channels will be covered. Completing this class will give you the foundation you need to use Teams in our rapidly changing technological world. A Teams class invitation will be sent to you at the email address provided during registration.

25786	Feb 23	Th 9a-11a	\$19/\$11.83
	<i>Online Live</i>		<i>Laurie Simon</i>

Microsoft Teams

47-103-410

Are you ready to learn everything you need to know about Microsoft Teams? If so, let's get you beyond the basics. Each class session will be highly interactive. Topics may include: create and set-up teams; channels, posts and messages; files and management; chat and calls; meetings, live events and calendars; apps and tools. Ensure a valid email address is used in registration as you will receive your class invite through your email account prior to start of class.

25787	Mar 2-Mar 9	Th 9a-12p	\$49/\$27.48
	<i>Online Live</i>		<i>Laurie Simon</i>

Windows 11

47-103-409

Learn the essential components of Windows 11. Become familiar with how to customize the Start Menu and work with the mouse, touchscreen, and keyboard. Explore Apps, create and modify user account settings, and understand file storage including photo management.

25592	Feb 15	W 1p-3p	\$19/\$11.83
	<i>Online Live</i>		<i>Sara Reimann</i>

25593	May 16	T 1p-3p	\$19/\$11.83
	<i>Online Live</i>		<i>Sara Reimann</i>

Technology for Personal Use

Android Intro

60-107-602

Getting to know a new mobile device can be exciting, especially if this is your first smartphone or tablet. The key is to start with the basics and take it one step at a time, so you don't get overwhelmed. First, make sure you're comfortable with the interface, including the screen, some of the built-in apps. Then you can move on to some other fundamental tasks, like connecting to the internet.

25613 Feb 28 T 1p-3p \$16.25/\$11.55
Online Live Sara Reimann

Backing Up Your Computer

60-107-602

There are two types of hard drives: those about to fail, and those that will fail eventually. Plan accordingly. It goes without saying that backing up data is a sensible thing to get into the habit of doing. Not only does it make sense in case your laptop is stolen, or your hard disk fails, but it also means that you have more options for recovery should your computer become infected. In this course you will learn many options available for backing up your data, and we will discuss the pros and cons of each method.

25604 Mar 21 T 1p-3p \$16.25/\$11.55
Online Live Sara Reimann

25605 Apr 12 W 4p-6p \$16.25/\$11.55
Online Live Sara Reimann

Facebook

It's where we're at!



Up-to-date info on new classes and events!

[@NorthwoodTechContinuingEducation](#)

Computer Security/Privacy Protection

60-107-602

Whether you realize it or not, the Internet touches almost all aspects of your daily life and you need the tools, resources and education to stay safe online. In this class you will learn how you can protect your computers, mobile devices, information and identity. Topics include Internet browsing & tracking, USB devices, authentication, phishing attacks, scams, identity theft, malware, backups, Wi-Fi security, anti-virus software, deleting files securely and more.

25615 May 3 W 4p-6p \$16.25/\$11.55
Online Live Sara Reimann

Facebook Basics

60-107-602

Whether you have been using Facebook for years, or you are a newbie, there is always something to learn. In this class you will learn not only navigating around Facebook but also very important privacy and security settings as well as Facebook marketplace buying and selling.

25612 Apr 26 W 1p-3p \$16.25/\$11.55
Online Live Sara Reimann

Digital Photo Organization Apple/PC

60-305-625

If your digital photo collections are a mess, the good news is that software and online services now have excellent tools for helping you organized your images fast. The goal is to be able to find and share the photos you love without a headache. Learn the concepts and techniques behind efficient photo management, photo editing, organizing, backup, and sharing. This class is for Apple/PC users. Please have your devices ready to go for class.

25621 Feb 21 T 1p-3p \$16.25/\$11.55
Online Live Sara Reimann

25622 Mar 22 W 4p-6p \$16.25/\$11.55
Online Live Sara Reimann

Explore Voice Assist. Tech **NEW!**

60-107-602

Alexa is Amazon's voice AI. Alexa lives in the cloud and is happy to help anywhere there's internet access and a device that can connect. Making Alexa part of your is as simple as asking a question. Alexa can play your favorite song, read the latest headlines, dim the lights in your living room and more. Basically, Alexa wants to make life easier, more meaningful, and more fun by helping you voice control your world - both at home and work.

25594 Feb 14 T 1p-3p \$16.25/\$11.55
Online Live Sara Reimann

Introduction to iPhone/iPad

60-107-602

Learn to use Apple's iPhone or iPad. Interact with your device, access different features, set up and manage your account, and access the Internet. Understand the capabilities and limitations of your device and why it may or may not replace your computer. Gain basic troubleshooting tips for when something goes awry. Have your phone or iPad fully charged at start of class and have your charging cable handy.

25606	Mar 7	T 1p-3p	\$16.25/\$11.55
	Online Live		Sara Reimann
25607	Apr 19	W 4p-6p	\$16.25/\$11.55
	Online Live		Sara Reimann

iPad Beyond the Basics

60-107-602

Let's go beyond the basics with your Apple iPad and iPhone. There's so much more that you can use. We'll discuss handy apps that can make your life easier; be ready to share any favorites of yours. Have your iPad or iPhone fully charged at start of class and have your charging cable handy.

25611	Apr 5	W 4p-6p	\$16.25/\$11.55
	Online Live		Sara Reimann

Keeping Track of Passwords

60-107-602

A good password is easy to remember, but difficult to guess, both for people who know you, and for anonymous password-crackers. We all have so many different passwords to keep track of nowadays, rather than taking the dangerous shortcuts of either using the same password for everything, or else writing passwords down and keeping them near your computer, this course will teach you tips to make it easier to create unique, memorable passwords for every different application. You will learn how to create good passwords, and what tools can help you store your passwords safely.

25597	Mar 8	W 4p-6p	\$16.25/\$11.55
	Online Live		Sara Reimann
25603	Apr 25	T 1p-3p	\$16.25/\$11.55
	Online Live		Sara Reimann

Stream Live Tv

60-308-601

Thinking about getting rid of another monthly bill? TV lovers have more budget-friendly options these days than they may realize. This class will teach you how to ditch cable and satellite TV - and save a bundle - without giving up your favorite shows or features. Netflix for old TV Shows and Movies, Hulu to watch LIVE TV, Amazon Prime

Video and much, much more! Learn how to use the devices you have to watch your favorite shows, rent/buy movies, view photos on your flat-screen TV and much more! This is a VERY fun class that fills up fast.

25618	Jan 25	W 4p-6p	\$16.25/\$11.55
	Online Live		Sara Reimann
25619	Mar 28	T 1p-3p	\$16.25/\$11.55
	Online Live		Sara Reimann
25620	May 23	T 1p-3p	\$16.25/\$11.55
	Online Live		Sara Reimann

Using All Google Has to Offer

60-107-602

What is the use of Google? Google offers Gmail, Chrome, Maps, Drive, Spreadsheets, YouTube, Calendar...and much more! With Google, you can upload and store all of your files online. You can then share these files with others and access them from any computer, smartphone, or tablet. With Google you can quickly and easily get answers on your smartphone or computer. Come and find out more about using Google has Everything. Please bring your laptop or device to class.

25608	Apr 11	T 1p-3p	\$16.25/\$11.55
	Online Live		Sara Reimann

**Save the Date!****Emergency Services Conference****March 24-25, 2023 | Rice Lake**

For full details and registration, visit

bit.ly/esc2023

Web-based Tools

Basic Web Design **NEW!**

47-107-492

This course will teach you how to use wix.com to create a free, stunning, simple, and effective website. Easy drag and drop, designer-made templates, beautiful galleries, mobile optimized, domains, huge image collection, secure hosting, SEO all wrapped up in one free website builder. Just pick a template, change anything you want, add your images, videos, text and more.

25549 Feb 21-Mar 2 TTh 6p-8p \$65/\$36.31
Online Live Abigail Brueggen

Buy/Sell on Facebook **NEW!**

60-107-602

Facebook took on Etsy and eBay in 2016 with the launch of Marketplace, a feature within the main Facebook app that you can use to buy and sell goods. We've seen it work really well on a local basis because it's so simple to see free and paid-for items that are around where you live and around the stuff you're interested in. Before marketplace, people used Facebook Groups to buy, sell and trade even barter. You could set up a garage sale-type group for your community, for instance, so that people in your local neighborhood could post things they had for sale and look for items from others. It was a bit clunky though, with Marketplace offering a much more streamlined approach.

25595 Feb 15 W 1p-3p \$16.25/\$11.55
Online Live Sara Reimann

25596 Apr 4 T 4p-6p \$16.25/\$11.55
Online Live Sara Reimann

Canva For Business **NEW!**

47-107-492

This course will look at how to use the site Canva.com to create and design posts for your social media accounts. This is a free tool that allows you to work with photo editing, design layout, and more, all within an easy-to-use platform.

25552 Feb 7-Feb 9 TTh 6p-8p \$35/\$20.65
Online Live Abigail Brueggen

Social Media for Business **NEW!**

47-107-491

This course will look at various social media platforms. We'll cover Facebook and Twitter. We will also explore how to create, share and/or exchange information, ideas, pictures/videos and hashtag posts. Many of these platforms come with apps for your phone in which we will also be looking at how to install and operate. We will also use the free site, Canva to create and design posts for your social media accounts.

25547 Feb 14-Feb 16 TTh 6p-8p \$35/\$20.65
Online Live Abigail Brueggen

BROADBAND

Broadband

Broadband Cable Installation 201

47-451-457

The student will design and install network cabling. The focus will be to understand voice and data networking. The basic cable installer will be able to build and administrate the physical layer of network infrastructure and gain a deeper understanding of the networking devices that this layer interconnects. Contact Dan.Schullo@northwoodtech.edu before registering. *Prerequisite: Successful completion of Telco 101 or current employment by a telecommunications company.*

25032 Jan 23-May 19 24/7 \$440.85/\$10.50
Online Paul Kostner

Broadband Fiber Service 101

47-451-454

This course is an introduction to the evolution of fiber optics. Students will be introduced to the physical characteristics of cable and the transmission of light through fiber optic cable. Students will view basic installation and troubleshooting methods while being introduced to industry color codes, print reading, system maps and a variety of fiber optic services. Contact Dan.Schullo@northwoodtech.edu before registering. *Prerequisite for Fiber 201.*

25030 Jan 23-May 19 24/7 \$147.95/\$4.50
Online Trent Givens



Basic Vehicle Maintenance | Pg 7

Broadband Fiber Service 201

47-451-456

This course will introduce the students to fiber optic communication systems. Topics covered include fiber optic design, installation, test and maintenance for multimode and singlemode networks. This class will benefit those with little or no fiber experience. Contact Dan.Schullo@northwoodtech.edu before registering. *Prerequisite: Successful completion of Fiber Service 101 or current employment by a telecommunications company.*

25031	Jan 23-May 19	24/7	\$440.85/\$10.50
	Online		Paul Kostner

Broadband Internet Service 101

47-451-452

This course is an introduction to the evolution of Internet services. Students will be introduced to the different types of broadband Internet delivery methods, installation and troubleshooting methods, Internet transmission types, safety issues, government regulatory services, the "Internet of Things" (IoT) and future trends. Contact Dan.Schullo@northwoodtech.edu before registering.

25027	Jan 23-May 19	24/7	\$147.95/\$4.50
	Online		Trent Givens

Broadband Telco Service 101

47-451-451

This course is an introduction to the evolution of POTS (Plain Old Telephone Service) and Public Switch Telephone Networks. Students will be introduced to the physical and electrical design of cables, basic installation, troubleshooting, industry color codes, print reading, system maps and telco service procedures. Contact Dan.Schullo@northwoodtech.edu before registering.

25026	Jan 23-May 19	24/7	\$147.95/\$4.50
	Online		Trent Givens

Broadband Television Service 101

47-451-453

This course is an introduction to the evolution of hybrid fiber coaxial and IPTV systems within the broadband industry. Students will be introduced to RF & IPTV networks, basic installation, print reading and set-top box administration. Students will address the importance of proper installation of customer equipment, troubleshooting and customer service. Contact Dan.Schullo@northwoodtech.edu before registering.

25029	Jan 23-May 19	24/7	\$147.95/\$4.50
	Online		Trent Givens

Overhead Construction Practices NEW!

47-451-461

The Overhead Utility Installer Technician (OUIT) is a member of a crew with skills in the construction and maintenance of overhead telecom utility and broadband systems. Depending on the service provided, the OUIT will work with a wide variety of cabling, including fiber optic cable, as part of their daily work routine. In addition, the OUIT may be required to operate overhead equipment. Contact dan.schullo@northwoodtech.edu before registering.

25033	Jan 23-May 19	24/7	\$255.54/\$4.50
	Online		Anthony Rohde

Underground Construction Practices NEW!

47-451-460

The Underground Utility Installer Technician (UUIT) is a member of a crew with skills in the construction and maintenance of underground or buried telecom utility systems. The UUIT will use skills such as underground utility location, fiber optic technology, and industry regulations as part of their daily work routine. In addition, the UUIT may be required to operate underground equipment. Contact dan.schullo@northwoodtech.edu before registering.

25034	Jan 23-May 19	24/7	\$291.40/\$4.50
	Online		Anthony Rohde

COSMETOLOGY**Cosmetology****Cosmetology Expo NEW!**

47-502-410

Update your cosmetology skills and learn advanced techniques in all aspects of hair, skin and nails. The day will include main stage speakers, breakout sessions, vendor exhibits, professional networking and more. For full agenda and registration, visit bit.ly/cosmoexpo_2023

25564	May 1	M 10a-4p	\$65/\$43.48
	Rice Lake: Conf Center		Guest Presenter

FREE Child Care Foundational Training

Child Care licensing classes being offered at **NO CHARGE** to students for the 2023-24 school year, thanks to a generous grant by Dept. of Children and Family.

For more information and to register, contact:

Gina.monicken@northwoodtech.edu

715.246.1885



Child Care: Intro to Child Care Profession

47-307-461

This class is a hybrid offering, utilizing Blackboard for course assignments. There is required attendance in online live sessions (dates TBD 1 month prior to class start date). Learners must have access to the Internet and a computer to participate in this hybrid course, as well as Microsoft Word to complete the course assignments.

Jan 16-Feb 24

Online: 24/7

M-F 7a-7:30a

Haley Hennlich

4 Bluejeans dates TBD

Dates TBD 1 month prior to class start Haley Hennlich

Child Care: Fundamentals Infant & Toddler Care

47-307-470

This class is a hybrid offering, utilizing Blackboard for course assignments. There is required attendance in online live sessions (dates TBD 1 month prior to class start date). Learners must have access to the Internet and a computer to participate in this hybrid course, as well as Microsoft Word to complete the course assignments.

Feb 27-Mar 17

Online: 24/7

M-F 7a-7:30a

Haley Hennlich

4 Bluejeans dates TBD

Dates TBD 1 month prior to class start Haley Hennlich

Child Care: Fundamentals Family Child Care

47-307-420

Provides essential information about establishing a family child care that is in accordance with Wisconsin's State Law.

Apr 22

Rice Lake

Sa 8:30a-3:30p

Rebecca Elbert



Child Care: Skills and Strategies for Child Care Teacher

47-307-462

This class is a hybrid offering, utilizing Blackboard for course assignments. There is required attendance in online live sessions (dates TBD 1 month prior to class start date). Learners must have access to the Internet and a computer to participate in this hybrid course, as well as Microsoft Word to complete the course assignments.

Mar 27-May 5

Online: 24/7

M-F 7a-7:30a

Haley Hennlich

4 Bluejeans dates TBD

Dates TBD 1 month prior to class start Haley Hennlich



Wisconsin Department of Children and Families

BUSINESS, FINANCE & LEADERSHIP

Business

Accounting Fundamentals

If you want to increase your financial awareness and gain a marketable skill, this course is for you. You will learn the double-entry bookkeeping, financial transactions, financial reporting, and more. Ed2Go is the online delivery platform for this class and all tech support and class assistance is handled directly through Ed2Go. Register and pay via Ed2Go at northwoodtech.edu/continuing-education-and-training/professional-development/online-classes

N/A Start dates vary \$115
Online Ed2GoStaff

Keys to Effective Communication

Become more confident, make great first impressions, get along with others, and create better personal and professional relationships. This course provides a step by step process to become a great conversationalist as you use communication to build rapport and create trust, warmth, and respect. Ed2Go is the online delivery platform for this class and all tech support and class assistance is handled directly through Ed2Go. Register and pay via Ed2Go at northwoodtech.edu/continuing-education-and-training/professional-development/online-classes

N/A Start dates vary \$100
Online Ed2GoStaff

Small Business Marketing 101 **NEW!**

47-104-480

In this course, you'll walk through everything you need to know about marketing your service or product effectively. You'll also learn how to identify your target market, formulate your brand message, and figure out the best marketing channels.

25550 Jan 31-Feb 2 TTh 6p-8p \$35/\$20.65
Online Live Abigail Brueggen

Insurance

Insurance: Principles, Laws & Ethics

47-162-501

This course is designed to meet the Section A, eight-hour, pre-licensing requirement. This includes the areas of the principles of insurance, general Wisconsin insurance laws, and ethics. You are required to purchase your books at the Northwood Technical College bookstore before class.

25296 Feb 6 M 8:30a-5:30p \$125/\$96.31
Online Rodney Schultz

25364 Mar 6 M 8:30a-5:30p \$125/\$96.31
Online Live Rodney Schultz

25374 Apr 3 M 8:30a-5:30p \$125/\$96.31
Online Live Rodney Schultz

25398 May 8 M 8:30a-5:30p \$125/\$96.31
Online Live Rodney Schultz

Insurance: Accident & Health

47-162-479

This course is designed to meet the 20-hour requirement for pre-licensing education in the area of accident and health insurance. Prerequisite: You must take the 8-hour Principles Law & Ethics course to apply for your license. If it is past a year since having the laws course and you are taking additional pre-licensing classes, the OCI requires you take the class again before testing. You are required to purchase the textbook at the Northwood Technical College bookstore before class.

25404 Mar 7 T 8:30a-5:30p \$149/\$105.96
Mar 8 W 8:30a-12:30p
Online Live Rodney Schultz

25405 May 9 T 8:30a-5:30p \$149/\$105.96
May 10 W 8:30a-12:30p
Online Live Rodney Schultz

Insurance: Life

47-162-481

This course is designed to meet the 20-hour requirement for pre-licensing education in the area of life insurance. Prerequisite: You must take the 8-hour Principles Law & Ethics course to apply for your license. If it is past a year since having the laws course and you are taking additional pre-licensing classes, the OCI requires you take the class again before testing. You are required to purchase the textbook at the Northwood Technical College bookstore before class.

25406 Mar 8 W 1:30p-5:30p \$149/\$105.96
Mar 9 W 8:30a-5:30p
Online Live Rodney Schultz

25407 May 10 W 1:30p-5:30p \$149/\$105.96
May 11 W 8:30a-5:30p
Online Live Rodney Schultz

Insurance: Property

47-162-480

This course is designed to meet the 20-hour requirement for pre-licensing education in the area of property insurance. Prerequisite: You must take the 8-hour Principles Law & Ethics course to apply for your license. If it is past a year since having the laws course and you are taking additional pre-licensing classes, the OCI requires you take the class again before testing. You are required to purchase the textbook at the Northwood Technical College bookstore before class.

25400	Feb 7	T 8:30a-5:30p	\$149/\$105.96
	Feb 8	W 8:30a-12:30p	
	<i>Online Live</i>		<i>Rodney Schultz</i>
25401	Apr 4	T 8:30a-5:30p	\$149/\$105.96
	Apr 5	W 8:30a-12:30p	
	<i>Online Live</i>		<i>Rodney Schultz</i>

Insurance: Casualty

47-162-500

This course is designed to meet the 20-hour requirement for pre-licensing education in the area of casualty insurance. Prerequisite: You must take the 8-hour Principles Law & Ethics course to apply for your license. If it is past a year since having the laws course and you are taking additional pre-licensing classes, the OCI requires you take the class again before testing. You are required to purchase the textbook at the Northwood Technical College bookstore before class.

25402	Feb 8	W 1:30p-5:30p	\$149/\$105.96
	Feb 9	W 8:30a-5:30p	
	<i>Online Live</i>		<i>Rodney Schultz</i>
25403	Apr 5	W 1:30p-5:30p	\$149/\$105.96
	Apr 6	W 8:30a-5:30p	
	<i>Online Live</i>		<i>Rodney Schultz</i>

Insurance CE

Comprehensive Estate Planning

47-162-482

Learn about estate tax planning including calculations and solutions for reducing estate tax. Discover advantages of buy-sell agreements. Understand gifting, trusts, and special planning considerations.

25155	Feb 17	F 8:30a-12:30p	\$65/\$50.65
	<i>Online Live</i>		<i>Brad Charles</i>

Ins CE: Principles, Laws & Ethics

47-162-501

See how ethics play a role in the daily operations of agents and their agencies. This course will focus on the areas of the principles of insurance and general Wisconsin insurance laws and ethics. You are required to purchase the textbook at the Northwood Technical College bookstore before the start of class in order to receive CE credit.

25345	Feb 6	M 8:30a-5:30p	\$125/\$96.31
	<i>Online Live</i>		<i>Rodney Schultz</i>
25367	Mar 6	M 8:30a-5:30p	\$125/\$96.31
	<i>Online Live</i>		<i>Rodney Schultz</i>
25375	Apr 3	M 8:30a-5:30p	\$125/\$96.31
	<i>Online Live</i>		<i>Rodney Schultz</i>
25399	May 8	M 8:30a-5:30p	\$125/\$96.31
	<i>Online Live</i>		<i>Rodney Schultz</i>

Estate Planning

47-162-482

Take an in-depth look at estate planning. Understand the process of estate planning and discuss various considerations.

25154	Mar 10	F 1p-5p	\$65/\$50.65
	<i>Online Live</i>		<i>Brad Charles</i>

Social Security/Medicare

47-162-482

Social Security is a United States federal program of social insurance and benefits developed in 1935. The Social Security program's benefits include retirement income, disability income, Medicare and Medicaid, and death and survivorship benefits. Social Security is one of the largest government programs in the world, paying out hundreds of billions of dollars per year.

25142	Mar 10	F 8:30a-12:30p	\$65/\$50.65
	<i>Online Live</i>		<i>Brad Charles</i>



Safety Day

Learn about a wide range of safety and health related topics.

Mar 30 | New Richmond | Pg 25

Tax Strategies

47-162-482

Dig into life insurance tax consequences and policies along with annuities. Find out what constitutes a Modified Endowment Contract and how to use one. Discuss qualified and non-qualified retirement plans and IRAs and learn about tax-favored health accounts.

25156 Feb 17 F 1p-5p \$65/\$50.65
Online Live Brad Charles

Real Estate

Real Estate Law for Salespersons

47-194-497

This course meets the 72 classroom hours of pre-license education required for a real estate salespersons license as required in Section 452.09(2)(a) of the Wisconsin Statutes. Completing this course will prepare you for the WI Real Estate license exam. Contents include principles of real estate, real estate law, forms, real estate business operations concepts, ethics, land use control and development, environmental concerns, and miscellaneous additional content. Please be prepared to pay an additional \$50 for required books.

25262 Jan 3-Mar 7 TTh 6p-10p \$277.06/\$4.50
Online Live Eric Nyhus

RE Law for Salespersons Online

47-194-497

This course meets the 72 classroom hours of pre-license education required for a real estate salespersons license as required in Section 452.09(2)(a) of the Wisconsin Statutes. Completing this course will prepare you for the WI Real Estate license exam. Contents include principles of real estate, real estate law, forms, real estate business operations concepts, ethics, land use control and development, environmental concerns, and miscellaneous additional content. You will have one year to complete this course. Please note that regardless of the date you sign up, you will need to complete by May 23, 2023. If you are signing up closer to that date, consider waiting for the next session of classes. Upon registration, you will receive a password to enter the online REI course and will then receive your textbook and forms book via US Mail. To register, email Sara.Dobberschutz@Northwoodtech.edu *This class is non-refundable.

25128 Dec 26-May 31 24/7 \$262.71/\$4.50
Online Ron Nyhus

HEALTH & HUMAN SERVICES

Professional Caregiver CEU

Ethics & Boundaries

47-520-405

Ethics, Boundaries & Rural Social Work Practice. This four-hour workshop will discuss the specific challenges and considerations with ethical social work practice in rural settings. As technology connects more people in different ways, maintaining privacy and healthy boundaries can be increasingly challenging. We will discuss healthy boundaries, dual relationships, and use the NASW Code of Ethics and Reamer's Ethical Decision-Making Model to assess the ways technology and rural social practice intersect. Class link will be sent to the email provided with registration 2-3 days prior to class. The complete live, 4-hour session is required for CEU attainment.

25497 Jan 20 F 8:30a-12:30p \$79/\$64.65
Online Live Kate Kipp



Stay **connected & informed** with our biweekly e-newsletter.

Sign up at:
bit.ly/northwoodtechcenews

Caregiving

Douglas County Regional Caregiver Conference

47-520-405

Interactive Caregiver Workshop: Tools for Transitions is the theme for the annual Regional Caregiver Conference, hosted by the Douglas County Caregiver Coalition. This special day will include interactive presentations, a local resource fair, snacks and much more.

This class is for family caregivers attending in-person at the Superior campus. Limited seating available for this in-person conference.

25587	May 11	Th 3p-6p	\$20.35/\$6
	<i>Superior: 108E, 108F</i>		<i>Guest Presenter</i>

This virtual/Zoom class is for family caregivers and/or those who do not need Continuing Education Units (CEUs). This webinar is available live or via recorded video link for 7 days following the live event. Class link will be emailed 2-3 days prior to the session.

25588	May 11	Th 3p-6p	\$20.35/\$6
	<i>Online Live</i>		<i>Guest Presenter</i>

Ashland Caregiver Conference: Technically Speaking & Financially Speaking

47-520-405

Enjoy a full day just for caregivers! The morning theme is Technically Speaking and the afternoon theme is Financially Speaking, all hosted by the Ashland and Bayfield County Dementia and Caregiver Network. This special day will include interactive presentations, a local resource fair, snacks and much more. *Lunch is on your own and not included in the session fee.

This class is for caregivers attending the morning and afternoon sessions, in-person at the Ashland campus. Limited seating available for this in-person conference.

25972	April 19	W 9a-4p	\$35.02/\$13.50
	<i>Ashland: 305, 306, 307</i>		<i>Guest Presenter</i>

This virtual/Zoom class is for caregivers attending the morning and afternoon sessions online. This webinar is available live or via recorded video link for 7 days following the live event. Class link will be emailed 2-3 days prior to the session.

25973	April 19	W 9a-4p	\$35.02/\$13.50
	<i>Online Live</i>		<i>Guest Presenter</i>

Ashland Caregiver Conference: Technically Speaking

47-520-405

Technically Speaking is the theme for the morning session of the Regional Caregiver Conference, hosted by the Ashland and Bayfield County Dementia and Caregiver Network. This event includes interactive presentations, a local resource fair, snacks and much more. Limited seating available for this in-person conference.

This class is for caregivers attending the morning session "Technically Speaking", in-person at the Ashland campus. Limited seating available for this in-person conference.

25966	April 19	W 9a-12p	\$20.35/\$6
	<i>Ashland: 305, 306, 307</i>		<i>Guest Presenter</i>

This virtual/Zoom class is for caregivers attending the morning session "Technically Speaking", online. This webinar is available live or via recorded video link for 7 days following the live event. Class link will be emailed 2-3 days prior to the session.

25969	April 19	W 9a-12p	\$20.35/\$6
	<i>Online Live</i>		<i>Guest Presenter</i>

Ashland Caregiver Conference: Financially Speaking

47-520-405

Financially Speaking is the theme for the afternoon session of the Regional Caregiver Conference, hosted by the Ashland and Bayfield County Dementia and Caregiver Network. This event includes interactive presentations, a local resource fair, snacks and much more. Limited seating available for this in-person conference.

This class is for caregivers attending the afternoon session "Financially Speaking", in-person at the Ashland campus. Limited seating available for this in-person conference.

25970	April 19	W 1p-4p	\$20.35/\$6
	<i>Ashland: 305, 306, 307</i>		<i>Guest Presenter</i>

This virtual/Zoom class is for caregivers attending the afternoon session "Financially Speaking", online. This webinar is available live or via recorded video link for 7 days following the live event. Class link will be emailed 2-3 days prior to the session.

25971	April 19	W 1p-4p	\$20.35/\$6
	<i>Online Live</i>		<i>Guest Presenter</i>

Medical Assistant

CMA CE Conference

47-509-409

This program is designed to enhance the learning of CMAs working in area health facilities providing new information on current trends in healthcare. This conference will be approved for 4 hours of CEU's through AAMA. Online live webinar format via Zoom. Each participant must log-in separately to the Zoom session via their own computer or device to document virtual attendance. The complete live, 4-hour session is required for CEU attainment. Zoom link will be sent to participants via email 2-3 days prior to the event.

25037	Feb 18 <i>Online Live</i>	Sa 8a-12p	\$30/\$15.65 <i>Guest Presenter</i>
25038	Apr 15 <i>Online Live</i>	Sa 8a-12p	\$30/\$15.65 <i>Guest Presenter</i>

LAW, PUBLIC SAFETY & SECURITY

Emergency Medical Services

ACLS Provider

47-531-429

Upon successful completion of this American Heart Association class, students will be proficient in the advanced skills necessary to manage an adult patient suffering from a cardiovascular or cerebrovascular event. Certification as an ACLS Provider requires successful completion of the cognitive and psychomotor portions of the class. Textbook required.

25567	Jan 25 Jan 27 <i>Rice Lake: 178</i>	W 8a-12p F 8a-5p	\$199/\$155.96 <i>Crystal Thome</i>
25580	Apr 5 Apr 7 <i>Rice Lake: 178</i>	W 8a-12p F 8a-5p	\$199/\$155.96 <i>Crystal Thome</i>

CAREGIVERS: SAVE THE DATE!

Join us for these exciting and informative Caregiver Conferences, for both family caregivers and professionals. These events are available **In-Person -or- Online Live**. See complete details, agendas, and online registration at: bit.ly/northwoodtechCEevents

Upcoming Caregiver Conferences:

- **April 19** | Ashland Regional Caregiver Conference
- **May 11** | Douglas County Regional Caregiver Conference



ACLS Renewal

47-531-430

This American Heart Association class will update students on the 2020 AHA guidelines plus recertify them in the skills and competencies needed to manage an adult cardiovascular or cerebrovascular emergency. Students must pass both the cognitive exam and the psychomotor portions of the class to obtain their two year recertification. Students should complete the AHA pre-test prior to class and bring a copy of their test results along with their current ACLS Provider manual to all sessions.

25627	Jan 27 <i>Rice Lake: 178</i>	F 8a-5p	\$159/\$130.31 <i>Crystal Thome</i>
25629	Apr 7 <i>Rice Lake: 178</i>	F 8a-5p	\$159/\$130.31 <i>Crystal Thome</i>

Advanced EMT Refresher

47-531-516

This 50 hour refresher will include the review and revision of the Advanced Emergency Medical Technician with inclusion of the National Emergency Medical Services Education Standards. This program is designed to serve as a refresher for Advanced Emergency Medical Technicians who have successfully completed the Advanced Emergency Medical Technician program. PREREQUISITES: Previous completion of a recognized Emergency Medical Technician program. Must also be 18 years of age.

25448	Jan 6-Feb 3 Jan 21 Feb 4	WF 5p-9p Sa 9a-5p Sa 9a-5p	\$201.19/\$21.88 <i>Sawyer County Ambulance</i>	 <i>Kevin Frey</i>
-------	--------------------------------	----------------------------------	--	-------------------------------

ASHI Pediatric 1st Aid/CPR Renewal

47-531-417

ASHI Pediatric CPR, AED, and First Aid training program provides an ideal training solution for schools, child care providers, youth sports coaches, and others required to learn how to respond to medical emergencies involving children. This versatile program is based upon the 2022 CPR and First Aid Guidelines, Caring for Our Children, 3rd Ed; and other evidence-based treatment recommendations.

24753	Feb 11 <i>Rice Lake: 221</i>	Sa 8:30a-12:30p	\$36/\$21.65 <i>Judith Balog</i>
24834	Mar 14 <i>Ashland: 203</i>	T 6p-10p	\$36/\$21.65 <i>Instructor TBD</i>
24835	Apr 18 <i>Superior: 135 - 136</i>	T 6p-10p	\$36/\$21.65 <i>Instructor TBD</i>
24754	May 6 <i>Rice Lake: 221</i>	Sa 8:30a-12:30p	\$36/\$21.65 <i>Judith Balog</i>

ASHI Pediatric 1st Aid and CPR

47-531-420

This course will help students gain the knowledge, skills and confidence necessary to respond to and manage medical emergencies involving children and infants until more advanced help is available. A student will be taught the updated guidelines of CPR, and an automated external defibrillator (AED), and first aid for children and infants. This course will certify a student for 2 years in CPR/AED/First Aid. Students will have the option to download a book from the Internet after successful completion of the course.

24751	Feb 11 <i>Rice Lake: 221</i>	Sa 8:30a-4:30p	\$44.69/\$16 <i>Judith Balog</i>
24832	Mar 18 <i>Ashland: 427</i>	Sa 8a-4p	\$44.69/\$16 <i>Instructor TBD</i>
24833	Apr 15 <i>Superior: 111</i>	Sa 8a-4p	\$44.69/\$16 <i>Instructor TBD</i>
24752	May 6 <i>Rice Lake: 221</i>	Sa 8:30a-4:30p	\$44.69/\$16 <i>Judith Balog</i>

2023 Employer Symposium

January 24 | New Richmond | 10 a.m. - 4 p.m.

Join us for our 2023 Employer Symposium to learn how dynamic preventive health care plan designs bring savings to employers and employees.

Perfect for Human Resources Professionals, CEOs, Administrators, CFOs, Business Managers and Business Owners.



For more information, visit bit.ly/employersymposium_2023

BLS Basic Life Support

47-531-437

The BLS Basic Life Support Course is designed to teach the skills of CPR for victims of all ages including ventilation with a barrier device and use of an automated external defibrillator (AED), and relief of foreign-body airway obstruction (FBAO). It is intended for participants who provide health care to patients in a hospital setting and out-of-hospital settings. This course is for anyone that is required to take a health care provider course for employment. All participants who successfully complete the course, including the written examination and skill demonstrations will receive a BLS Basic Life Support provider completion card that will certify them for two years (credential.) Book provided at class.

24735	Jan 7	Sa 8:30a-4:30p	\$55.54/\$26.85
	Rice Lake: 221		Judith Balog
24795	Jan 10-Jan 12	TTh 6p-10p	\$55.54/\$26.85
	Ashland: 427		Instructor TBD
24799	Jan 21	Sa 8a-4p	\$55.54/\$26.85
	Superior: 135-136		Instructor TBD
24374	Jan 28	Sa 9a-5p	\$55.54/\$26.85
	Ashland: 427		Instructor TBD
24375	Jan 28	Sa 9a-5p	\$55.54/\$26.85
	Superior: 135-136		Instructor TBD
24376	Jan 28	Sa 9a-5p	\$55.54/\$26.85
	Rice Lake: 178		Diana Wymer
24377	Jan 28	Sa 9a-5p	\$55.54/\$26.85
	New Richmond: 1602		Instructor TBD
25004	Feb 4	Sa 9a-5p	\$55.54/\$26.85
	New Richmond: 1604		Instructor TBD
24796	Feb 11	Sa 8a-4p	\$55.54/\$26.85
	Ashland: 203		Instructor TBD
24737	Feb 25	Sa 8:30a-4:30p	\$55.54/\$26.85
	Rice Lake: 221		Judith Balog
24800	Mar 7-Mar 9	TTh 6p-10p	\$55.54/\$26.85
	Superior: 135-136		Instructor TBD
25006	Mar 15-Mar 16	WTh 6p-10p	\$55.54/\$26.85
	New Richmond: 1201		Instructor TBD
24741	Apr 1	Sa 8:30a-4:30p	\$55.54/\$26.85
	Rice Lake: 155		Judith Balog
25042	Apr 1	Sa 8a-5p	\$55.54/\$26.85
	Balsam Lake: 102		Instructor TBD
24797	Apr 8	Sa 8a-4p	\$55.54/\$26.85
	Ashland: 427		Instructor TBD
25011	Apr 29	Sa 9a-5p	\$55.54/\$26.85
	New Richmond: 1201		Instructor TBD
24742	May 13	Sa 8:30a-4:30p	\$55.54/\$26.85
	Rice Lake: 221		Diana Wymer
24801	May 20	Sa 8a-4p	\$55.54/\$26.85
	Superior: 111		Instructor TBD
24798	May 23-May 25	TTh 6p-10p	\$55.54/\$26.85
	Ashland: 427		Instructor TBD

BLS Basic Life Support Renewal

47-531-439

This course is intended for the biennial renewal of the BLS Basic Life Support. Students must successfully complete skills testing on one-and two-rescuer CPR (adult, child, infant), foreign body airway obstruction (FBAO) procedures (adult, child, infant), and mask with one-way valve usage. A minimum of 84 percent must be attained on the written test. (PREREQUISITE: BLS Basic Life Support completion within previous two years.)

24378	Jan 2	M 6p-10p	\$42/\$27.65
	Bayfield Fire Dept.		Lynette Hoopman-Cornelius
24736	Jan 7	Sa 12:30p-4:30p	\$42/\$27.65
	Rice Lake: 221		Judith Balog
24802	Jan 19	Th 6p-10p	\$42/\$27.65
	Ashland: 427		Instructor TBD
24817	Jan 31	T 6p-10p	\$42/\$27.65
	Superior: 135-136		Instructor TBD
25012	Feb 9	Th 6p-10p	\$42/\$27.65
	New Richmond: 1201		Instructor TBD
24738	Feb 25	Sa 12:30p-4:30p	\$42/\$27.65
	Rice Lake: 221		Judith Balog
24815	Mar 14	T 6p-10p	\$42/\$27.65
	Ashland: 427		Instructor TBD
25013	Mar 23	Th 6p-10p	\$42/\$27.65
	New Richmond: 1201		Instructor TBD
24739	Apr 1	Sa 12:30p-4:30p	\$42/\$27.65
	Rice Lake: 155		Judith Balog
25015	Apr 27	Th 6p-10p	\$42/\$27.65
	New Richmond: 1201		Instructor TBD
24818	May 4	Th 6p-10p	\$42/\$27.65
	Superior: 135-136		Instructor TBD
24740	May 13	Sa 12:30p-4:30p	\$42/\$27.65
	Rice Lake: 221		Diana Wymer
24816	May 30	T 6p-10p	\$42/\$27.65
	Ashland: 427		Instructor TBD



Cosmetology Expo

May 1 | Pg 13

CPR/AED/Basic First Aid Renewal-ASHI

47-531-459

This course will recertify students in CPR/AED & Basic First Aid. Students will renew their skills in CPR/AED and First Aid. PREREQUISITE: Students must have taken the original course within the last 2 years.

24825	Jan 17	T 6p-10p	\$39/\$24.65
	Ashland: 427		Instructor TBD
24747	Jan 28	Sa 8:30a-12:30p	\$39/\$24.65
	Rice Lake: 221		Judith Balog
24830	Feb 7	T 6p-10p	\$39/\$24.65
	Superior: 135-136		Instructor TBD
25021	Feb 20	M 6p-10p	\$39/\$24.65
	New Richmond: 1201		Instructor TBD
24750	Mar 18	Sa 8:30a-12:30p	\$39/\$24.65
	Hayward-Ojibwa: 106		Diana Wymer
24827	Mar 21	T 6p-10p	\$39/\$24.65
	Ashland: 427		Instructor TBD
25022	Apr 13	Th 6p-10p	\$39/\$24.65
	New Richmond: 1201		Instructor TBD
24748	Apr 22	Sa 8:30a-12:30p	\$39/\$24.65
	Rice Lake: 221		Judith Balog
24829	Apr 27	Th 6p-10p	\$39/\$24.65
	Ashland: 427		Instructor TBD
24831	May 18	Th 6p-10p	\$39/\$24.65
	Superior: 135-136		Instructor TBD
24749	May 20	Sa 8:30a-12:30p	\$39/\$24.65
	Rice Lake: 221		Diana Wymer

CPR/AED/Basic First Aid-ASHI

47-531-419

This course is a combined CPR/AED/ Basic First Aid program designed specifically for laypeople. The program is good for the community and the workplace setting. This course is designed to teach people the knowledge and skills that they need to recognize emergencies and perform CPR and use an AED and perform First Aid until EMS arrives. This course will certify a person for 2 years in CPR/AED/Basic First Aid. This course will cover Adult/Child and Infant skills.

25020	Mar 11	Sa 9a-5p	\$44.69/\$16
	Balsam Lake: 102		Instructor TBD
25019	Mar 25	Sa 9a-5p	\$44.69/\$16
	New Richmond: 1201		Instructor TBD
24820	Jan 24-Jan 26	TTh 6p-10p	\$44.69/\$16
	Ashland: 427		Instructor TBD
24743	Jan 28	Sa 8:30a-4:30p	\$44.69/\$16
	Rice Lake: 221		Judith Balog
24822	Jan 28	Sa 8a-4p	\$44.69/\$16
	Superior: 111		Instructor TBD
24746	Mar 18	Sa 8:30a-4:30p	\$44.69/\$16
	Hayward-Ojibwa: 106		Diana Wymer

24823	Apr 11-Apr 13	TTh 6p-10p	\$44.69/\$16
	Superior: 135-136		Instructor TBD
24744	Apr 22	Sa 8:30a-4:30p	\$44.69/\$16
	Rice Lake: 221		Judith Balog
24821	May 6	Sa 8a-4p	\$44.69/\$16
	Ashland: 203		Instructor TBD
24745	May 20	Sa 8:30a-4:30p	\$44.69/\$16
	Rice Lake: 221		Diana Wymer

Emergency Medical Responder Refresher

47-531-446

This class will include the review and revision of the Emergency Medical Responder (EMR) curriculum with inclusion of the National Emergency Medical Services Education Standards to allow students to transition. This program is designed to serve as a refresher for the student who has previously attended and completed the EMR course. PREREQUISITE: Certification as a First Responder as evidenced by successful completion of the Department of Transportation (DOT) EMR course.

24974	Jan 2-Feb 28	M-F 7a-7:30a	\$64.38/\$7
	Online		Instructor TBD
	Feb 11	Sa 8a-5p	
	Iron River Ambulance Hall		Instructor TBD
24548	Jan 7	Sa 8a-4p	\$64.38/\$7
	Jan 21	Sa 8a-4p	
	Brule Fire Hall		Nova Nordrum
24547	Jan 10-Jan 12	TTh 6p-10p	\$64.38/\$7
	Jan 10-Jan 31	M-F 7a-7:30a	
	Bennett Town Hall		Stacey Vig

EMT Refresher

47-531-515

This 40 hour refresher will include the review and revision of the Emergency Medical Technician with inclusion of the National Emergency Medical Services Education Standards. This program is designed to serve as a refresher for Emergency Medical Technicians who have successfully completed the Emergency Medical Technician program. PREREQUISITES: Previous completion of a recognized Emergency Medical Technician program. Must also be 18 years of age.

24712	Jan 1-Mar 4	M-F 7a-7:30a	\$160.95/\$17.50
	Online: WCCB		Thomas Renz
	Mar 4	Sa 8a-5p	
	Washburn Ambulance Hall		Thomas Renz
24884	Jan 2-Feb 28	M-F 7a-7:30a	\$160.95/\$17.50
	Online		Sherry Carlson
	Jan 21	Sa 8a-5p	
	Bayfield Ambulance Hall		Sherry Carlson
24885	Jan 2-Feb 28	M-F 7a-7:30a	\$160.95/\$17.50
	Online		Instructor TBD
	Feb 11	Sa 8a-5p	
	Iron River Ambulance Hall		Instructor TBD

24886	Jan 2-Feb 28	M-F 7a-7:30a	\$160.95/\$17.50
	Online		Sherry Carlson
	Feb 25	Sa 8a-5p	
	Mason Ambulance Hall		Sherry Carlson
25447	Jan 6-Feb 1	WF 5p-9p	\$160.95/\$17.50
	Jan 21	Sa 9a-5p	
	Sawyer County Ambulance		Kevin Frey

Instructor Renewal: ACLS

47-531-502

Instructor recertification for American Heart Association Advanced Cardiac Life Support.

25494	Jan 21	Sa 8:30a-12:30p	\$91.83/\$77.48
	Rice Lake: 210		Stephen Mackiewicz

Instructor Renewal: CPR - AHA

47-531-458

This course is designed to renew current expiring certification of American Heart Association (AHA) CPR instructors. (PREREQUISITE: Current AHA-CPR instructor credentials or expired AHA-CPR instructor within AHA Guidelines expiration.)

24551	Jan 14	Sa 10a-1p	\$42/\$27.65
	New Richmond: 1602		Stephen Mackiewicz
24552	Jan 14	Sa 1p-4p	\$42/\$27.65
	New Richmond: 1602		Stephen Mackiewicz
24554	Feb 4	Sa 10a-1p	\$42/\$27.65
	Ashland: 306		Stephen Mackiewicz
24555	Feb 4	Sa 1:30p-4:30p	\$42/\$27.65
	Ashland: 306		Stephen Mackiewicz
24556	Feb 11	Sa 10a-1p	\$42/\$27.65
	Superior: 111		Stephen Mackiewicz
24557	Feb 18	Sa 9a-12p	\$42/\$27.65
	Rice Lake: 225		Stephen Mackiewicz
24558	Feb 18	Sa 12:30p-3:30p	\$42/\$27.65
	Rice Lake: 225		Stephen Mackiewicz
24559	Feb 21	T 10a-1p	\$42/\$27.65
	Rice Lake: 225		Stephen Mackiewicz
24560	Feb 21	T 1:30p-4:30p	\$42/\$27.65
	Rice Lake: 225		Stephen Mackiewicz
24561	Feb 21	T 5p-8p	\$42/\$27.65
	Rice Lake: 223		Stephen Mackiewicz

Instructor Renewal: PALS

47-531-503

Instructor recertification for American Heart Association Pediatric Advanced Cardiac Life Support.

25495	Jan 21	Sa 1p-5p	\$91.83/\$77.48
	Rice Lake: 210		Stephen Mackiewicz

PALS - Pediatric Advanced Life Support (Initial Provider)

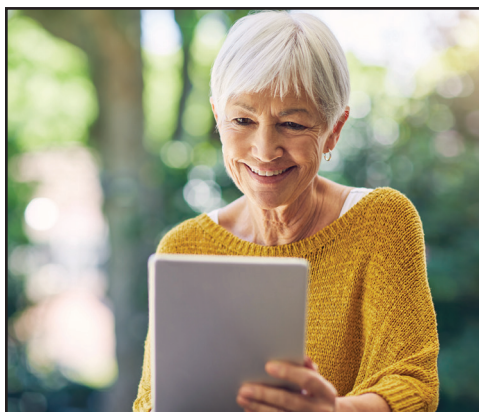
47-531-409

American Heart Association and American Academy of Pediatrics course designed for Advanced

Life Support of Pediatric Emergencies and Illnesses. Prerequisite: EMT-I, EMT-P, RN, Physician. Prior to attending the class, a pre-test must be taken and completed. That test is located on the AHA website. A link to that website is provided in the front of the Provider’s manual. That manual must accompany the student to class. The student must print off a copy of their pre-test certificate and bring it to class with them.

This American Heart Association class will update students on the 2020 AHA guidelines plus recertify them in the skills and competencies needed to manage an adult cardiovascular or cerebrovascular emergency. Students must pass both the cognitive exam and the psychomotor portions of the class to obtain their two year recertification. Students should complete the AHA pre-test prior to class and bring a copy of their test results along with their current ACLS Provider manual to all sessions.

25572	Jan 25	W 1p-5p	\$199/\$155.96
	Jan 26	Th 8a-5p	
	Rice Lake: 178		Crystal Thome
25575	Apr 5	W 1p-5p	\$199/\$155.96
	Apr 6	Th 8a-5p	
	Rice Lake: 178		Crystal Thome



Northwood Tech partners with **Ed2Go** to offer a wide range of highly interactive non-credit courses that you can take entirely online. Complete courses from your home or office and at any time of the day or night – affordable, fun, fast, convenient, and geared just for you. New course sessions begin monthly.

A variety of Ed2Go classes are featured throughout this catalog. For a complete list of classes and start dates, visit bit.ly/northwoodtech_online

PALS-Pediatric Advanced Life Support (Renewal)

47-531-410

American Heart Association and American Academy of Pediatrics course designed for Advanced Life Support of Pediatric Emergencies and Illnesses. Prerequisite: Current AHA PALS - Provider card. Prior to attending the class, a pre-test must be taken and completed. That test is located on the AHA website. A link to that website is provided in the front of the Provider's manual. That manual must accompany the student to class. The student must print off a copy of their pre-test certificate and bring it to class with them.

This American Heart Association class will update students on the 2020 AHA guidelines plus recertify them in the skills and competencies needed to manage an adult cardiovascular or cerebrovascular emergency. Students must pass both the cognitive exam and the psychomotor portions of the class to obtain their two year recertification. Students should complete the AHA pre-test prior to class and bring a copy of their test results along with their current PALS Provider manual to all sessions.

25577	Jan 26	Th 8a-5p	\$159/\$130.31
	<i>Rice Lake: 178</i>		<i>Crystal Thome</i>
.....			
25578	Apr 6	Th 8a-5p	\$159/\$130.31
	<i>Rice Lake: 178</i>		<i>Crystal Thome</i>

Paramedic Refresher

47-531-517

This 50 hour refresher will include the review and revision of the Advanced Emergency Medical Technician with inclusion of the National Emergency Medical Services Education Standards. This program is designed to serve as a refresher for Advanced Emergency Medical Technicians who have successfully completed the Advanced Emergency Medical Technician program. PREREQUISITES: Previous completion of a recognized Emergency Medical Technician program. Must also be 18 years of age.

25449	Jan 6-Feb 10	WF 5p-9p	\$241.43/\$26.25
	Jan 21	Sa 9a-5p	
	Feb 4	Sa 9a-5p	
	<i>Sawyer County Ambulance</i>		<i>Kevin Frey</i>

MANUFACTURING, TECHNOLOGY & ENGINEERING

Manufacturing

Machine Tool Operation

47-420-493

Gain the basic skills necessary to safely operate machine tool equipment at the beginning and intermediate levels. Through group lecture and demonstrations, learn safety, set ups, proper feeds, and speeds of machine tool equipment. An advanced lab opportunity is available for students demonstrating competency in safe operation of machines. You may be approved to work independently on selected vocational objectives with assistance from your instructor. Safety glasses required; work boots and ear protection recommended.

25130	Jan 12	Th 5:30p-9:30p	\$166.91/\$37.80
	Jan 26-Mar 9	Th 5:30p-9:30p	
	<i>Ashland: 119</i>		<i>David Olson</i>
.....			
25131	Jan 12	Th 5p-9p	\$166.91/\$37.80
	Jan 26-Mar 9	Th 5p-9p	
	<i>Superior: 119</i>		<i>Instructor TBD</i>

Safety

OSHA Safety: General Ind-10hr

47-449-425

This introductory course is for people in the general industry sector that covers the following subjects which are necessary for compliance with the Occupational Safety & Health Act: hazard communication, hazardous materials, means of egress and fire protection, walking and working surfaces, machine guarding, lock out/tag out, personal protective equipment, introduction to OSHA inspections, citations, and penalties. Upon completion you will receive Dept of Labor (DOL) issued completion card. Class approved for CEUs by WI DSPS.

26016	Feb 16-17	Th F 4:30p-6:30p	\$149/\$113.75
	Feb 23-24	Th F 4:30p-6:30p	
	Mar 2	Th 4:30p-6:30p	
	<i>Balsam Lake Outreach Center</i>		<i>Ellie Nelson</i>



Safety Day

47-449-431

Safety Day is a conference designed for participants to learn about a wide range of safety and health related topics in a single day long conference, to raise awareness of the importance of personal safety for workers; exploring the risks that workers may encounter during their working day. Sessions are fast paced and provide the most relevant, up-to-date information based on today's OSHA standards and regulations. Several workshops will give participants practical experience in applying standards and concepts. Lunch and snacks included.

25503 Mar 30 Th 8a-3p \$55/\$33.48
New Richmond: Conf Center Guest Presenters

techniques while understanding theory and safety, metallurgy, distortion control, heat treatment, and machine control. Please bring a lunch, notebook, pliers, safety glasses, work boots, and welding helmet to class.

25118 Jan 28 Sa 9a-3p \$29.92/\$8.40
New Richmond: 1209 Daniel Wilkinson

TRANSPORTATION, DISTRIBUTION & LOGISTICS

Welding

Welding

47-442-406

Learn oxy-fuel and plasma cutting, shielded metal arc, gas metal arc, and gas tungsten arc welding processes. This class is designed for beginners and individuals looking to advance present welding skills. Please bring notebook, pliers, safety glasses, welding gloves, welding jacket/helmet and leather boots.

25119 Jan 20-Apr 7 F 6p-9p \$179.51/\$50.40
Superior: 128 Paul Renman

25121 Jan 20-Apr 7 F 6p-9p \$179.51/\$50.40
Ashland: 118 Stephen Geiger

Beyond Welding - MIG **NEW!**

47-442-406

Enhance your welding skills beyond the basics during this one day aluminum/stainless MIG workshop. Practice gas metal arc welding in a state-of-the-art welding lab. Learn advanced techniques while understanding theory and safety, metallurgy, distortion control, heat treatment, and machine control. Please bring a lunch, notebook, pliers, safety glasses, work boots, and welding helmet to class.

25117 Jan 21 Sa 9a-3p \$29.92/\$8.40
New Richmond: 1209 Daniel Wilkinson

Beyond Welding - TIG **NEW!**

47-442-406

Enhance your welding skills beyond the basics during this one day aluminum/stainless MIG workshop. Practice gas metal arc welding in a state-of-the-art welding lab. Learn advanced

Driver Training

CDL B License - Behind the Wheel

47-458-407

Professional drivers are responsible for the safe and efficient delivery of goods. This course will prepare you for that through a driving simulator and behind-the-wheel activities. The course includes an introduction to the industry, vehicle inspections and systems overview, safe driving techniques, cargo documentation and employer/employee relations. The Class B license does not allow a driver to operate tractor-trailers or other combination vehicles. A student must have their Class B permit before starting this course. Behind-the-Wheel Times will vary and will be determined between the instructor and the students.

25157 Dec 26-May 31 M-F 7a-7:30a \$1550/\$1406.55
Rice Lake: Parking Lot Janine Running

25408 Dec 26-May 31 M-F 7a-7:30a \$1550/\$1406.55
New Richmond: Parking Lot Steven Ford

25410 Dec 26-May 31 M-F 7a-7:30a \$1550/\$1406.55
Balsam Lake: Parking Lot John Murtha



Broadband
 Pgs 12 - 13

CDL Permit Prep Online

47-458-405

This is a self-study online course. You may study at your own pace for the written Commercial Driver's License Permit test. This is applicable to Class A or Class B students.

Are you interested in obtaining your Commercial Driver's License? Did you know that before learning how to drive a rig, you need to get a learning permit? Ensure that you are better prepared before attempting the CDL test when you visit your local DMV service center. If you prefer to learn with a schedule convenient for you, Northwood Technical College also offers an online option. The online course is designed for you to progress at your own pace. Receive links to WI Commercial Driver's Manual (WI CDM), suggested readings and study aids, and sample tests which will help prepare you for the CDL Permit Exam. There are no deadlines other than you must be completed with all tests and activities before the end of the academic semester.

25167 Dec 26-May 31 24/7 \$69/\$18.79
Online Janine Running

Haz Mat Training

47-458-412

This course meets the FMCSA standards for ELDT theory education for Haz Mat. Completion deadline is the end of each semester. If you are registering toward the end of the semester, consider waiting for the next session.

25132 Dec 26-May 31 24/7 \$49/\$20.31
Online Janine Running

Truck Driving Simulator

47-458-408

This course provides behind the wheel professional driver training for learners who already hold a CDL. The learner will enhance their existing driving skills plus refresh on industry regulations, trip planning, hours of service, driver safety, advanced operations, and technical backing skills.

Practice or refresh your truck driving skills on a state-of-the-art driving simulator. This two hour simulated driving experience provides a highly realistic, no-risk learning environment. Choose from a library of real-world options, including terrain, hazards, weather, and breakdown scenarios, along with several shifting options.

25126 Dec 26-May 31 M-F 7a-7:30a \$119/\$111.83
Rice Lake: 136 Janine Running

Truck Driving Theory Class A

47-458-410

This course meets the FMCSA standards for ELDT theory education for Class A vehicles. Completion deadline is the end of each semester. If you are registering toward the end of the semester, consider waiting for the next session.

25123 Dec 26-May 31 24/7 \$199/\$55.55
Online Janine Running

Truck Driving Theory Class B

47-458-410

This course meets the FMCSA standards for ELDT theory education for Class B vehicles. Completion deadline is the end of each semester. If you are registering toward the end of the semester, consider waiting for the next session.

25124 Dec 26-May 31 24/7 \$199/\$55.55
Online Janine Running

EMERGENCY MEDICAL SERVICES TRAINING

Contact Northwood Tech for all your EMS training needs.



Questions? Contact:

**Dee Folie, Paramedic/EMS
 Clinical Coordinator**

dee.folie@northwoodtech.edu

SPRING 2023 CALENDAR

Look inside or online at bit.ly/northwoodtechCEevents for full descriptions and details.

- **Ethics, Boundaries & Rural Social Work Practice**
Jan 20 | Online Live
Explore the challenges and considerations with ethical social work practice in rural settings.
- **2023 Employer Symposium**
Jan 24 | New Richmond
Explore the benefits of dynamic preventive health care plans.
- **Certified Medical Assistant CE Conferences**
Feb 18 | Online Live
Apr 15 | Online Live
Conferences approved for 4 hours of CEU's through AAMA.
- **Emergency Services Conference**
Mar 24 - 25 | Rice Lake
For Fire and EMS professionals.
- **Safety Day**
Mar 30 | New Richmond
Explore workplace safety and health related topics.
- **Spring Garden Expo**
Apr 1 | Rice Lake
Get ready for gardening season!
- **Caregiver Conferences**
Apr 19 | Ashland -OR- Online Live
May 11 | Superior -OR- Online Live
For family and professional caregivers.
- **Cosmetology Expo**
May 1 | Rice Lake
Update your cosmetology skills & learn advanced techniques.

Register early as events fill quickly!

Featured Certificates 2023

Phlebotomy

Technical certificate 13-14 credits

Work in the exciting area of healthcare by becoming a Phlebotomist. You will receive para-practical training in the collection of blood specimens by venipuncture and capillary puncture for the purpose of lab analysis. There is also training in non-blood specimen collection procedures, specimen processing and basic laboratory skills. Job opportunities for phlebotomist exist in hospital and clinical laboratories.

10160143	Medical Office Procedures and Customer Service	2 credits
10513110	Basic Lab Skills	1 credit
10513111	Phlebotomy	2 credits
10513112	Phlebotomy Clinical	2 credits
10501101	Medical Terminology	3 credits
10806177	General Anatomy and Physiology	4 credits
10801196	Oral/Interpersonal Communication	3 credits

Prof Credential for Infants/Toddlers (WI)

Technical certificate 12 credits

Infant and toddler teachers, assistant teachers, program directors, administrators and anyone who works with children under the age of three will benefit greatly from this credential program. Early care and education professionals wishing to build upon their skills in the infant and toddler setting will find this credential invaluable.

10307115	ECE: Infant Toddler Capstone	3 credits
10307151	ECE: Infant & Toddler Development	3 credits
10307169	ECE: Infant Toddler Group Care	3 credits
10307195	ECE: Family and Community Relationships	3 credits

Supervisory Leadership

Technical certificate 18 credits

Update your leadership and management skills to prepare for a future supervisory job or to complement your current managerial position. By completing the Supervisory Leadership certificate you'll be prepared to be employed in a variety of businesses and industries. *Full requirements list online.

10196190	Leadership Development	3 credits
10196191	Supervision	3 credits
10801136	English Composition 1	3 credits
10809198	Intro to Psychology	3 credits
10801196	Oral/Interpersonal Communication	3 credits
10801198	Speech	3 credits

Tax Preparer Assistant

Pathway certificate 10 credits

Begin your accounting career by completing three courses to earn your Tax Preparer Assistant certificate. The Tax Preparer Assistant Career Pathway option connects you to progress levels of coursework to allow you to build upon your education.

10101101	Financial Accounting 1	4 credits
10101123	Income Tax Accounting	4 credits
10101174	QuickBooks Accounting - Beginning	2 credits

Advanced Marine Repair Technician

Technical certificate 6 credits

The Advanced Marine Repair Technician certificate is designed to provide graduates of the Marine Repair Technician program with the opportunity to develop advanced level skills in the areas of marine engine rebuilding and marine engine/power systems.

31461344	Advanced Marine Engine Rebuilding	3 credits
31461345	Advanced Marine Engine Systems	3 credits

Contact your local campus Student Services office for more information and registration details about any certificate. Visit us online at www.northwoodtech.edu/certificate for the full list of offered certificates and their requirements. *Academic support services are available.

NORTHWOOD TECH BUSINESS TRAINING
FIRST IN TRAINING SOLUTIONS



Flexible

Convenient

Customized

**Fully online
programs
available**

➤ **Solve complex problems.**

To compete in today's global marketplace, your employees need to be well trained and current. Northwood Tech can help you get there.

➤ **We start by listening.**

Northwood Tech takes the time to understand your needs. We know how to assess and design your customized training supported by business experts and instructional staff. Our experts will be there, every step of the way, keeping in touch, so you can focus on your day-to-day operations.

➤ **Delivering the solution.**

Courses meet the training and certification needs of today's workforce, with convenient locations and a variety of delivery formats to fit your schedule.

Contact your regional associate dean today for a free, no obligation customized training assessment!

Dan Miller

715.319.7335

Ashland and Superior campuses including counties of Ashland, Bayfield, Douglas, Iron

Dan.Miller@northwoodtech.edu

BJ Williams

715.788.7046

Rice Lake campus including counties of Barron, Rusk, Sawyer, Washburn

BJ.Williams@northwoodtech.edu

Liz Pizzi

715.752.8127

New Richmond campus including counties of Burnett, Polk, St. Croix

Liz.Pizzi@northwoodtech.edu

It's Easy to Register!

ONLINE Register and submit your credit card payment online at northwoodtech.edu. Then click, 'Find a Class'.

PHONE Register by phone using a credit card.

MAIL Fill out the registration and mail it with your payment to the appropriate campus. Your registration must be received before you begin courses.

Registration Locations

Northwood Tech

2100 Beaser Ave, Ashland, WI 54806
715.682.4591

Northwood Tech

1019 S. Knowles Ave, New Richmond, WI 54017
715.246.6561

Northwood Tech

1900 College Drive, Rice Lake, WI 54868
715.234.7082

Northwood Tech

600 N. 21st Street, Superior, WI 54880
715.394.6677

Northwood Tech Outreach Center

400 Polk County Plaza
Balsam Lake, WI 54810
715.485.3044

Northwood Tech Outreach Center

15618 Windrose Ln. Suite 106
Hayward, WI 54843
715.634.5167

Northwood Tech Outreach Center

1104 Lake Avenue Suite 1
Ladysmith, WI 54848
715.532.3399

REGISTRATION POLICIES

Nondiscrimination Notice

Northwood Technical College is an equal opportunity employer/educator functioning under the affirmative action plan. Northwood Technical College does not discriminate on the basis of race, color, ancestry, religion, sex, service in the uniformed services, veteran status, national origin, age, disability, sexual orientation, marital or family status, pregnancy, pregnancy-related conditions or status in any group protected by federal, state or local law in employment, admissions or its programs, services or activities, including but not limited to admissions, treatment and access. The following person has been designated to handle inquiries regarding the nondiscrimination policies: Amanda Gohde, Director, Human Resources, Equal Opportunity/Access & Affirmative Action Officer, 1900 College Drive, Rice Lake WI 54868, 715-645-7042, Amanda.Gohde@northwoodtech.edu.

Accommodations for Persons With Disabilities

Reasonable accommodations for persons with disabilities will be made to ensure access to academic programs, activities, services and employment in accordance with 504 of the Rehabilitation Act of 1973, the Americans With Disabilities Act of 1990 and the Americans with Disabilities Act (ADA) Amendments Act of 2008. If accommodations are needed, the student should contact the campus Accommodations Specialist or Amanda Gohde, Director, Human Resources, Equal Opportunity/Access & Affirmative Action Officer, at 715.645.7042, 30 days in advance of needed assistance.

Senior Fees

Northwood Technical College has implemented a waiver for students ages 62 plus. This waiver is for personal enrichment courses only (the catalog number begins with 60) and provides up to a 40% discount. (Amount varies based on material fees.) Students age must be 62 plus at the start of the term (6/12 for summer, 8/28 for fall, 1/22 for spring). Students ages 62 plus who are enrolled in professional courses (catalog number begins with 42 or 47) are still exempt from program fees under State Statute 38.24 (1)(b) and only required to pay material fees, which is approximately \$4.50 for many courses.

ARE YOU AN ALUM?



Follow the Alumni Community on Facebook:
[@NorthwoodTechAlumni](https://www.facebook.com/NorthwoodTechAlumni)



Sign up for the e-newsletter:
bit.ly/northwoodtechalum



Make a difference; give today:
northwoodtech.edu/donate



Northwood
Technical College

REGISTRATION FORM

For Continuing Education (non-credit) Courses

Last Name First Name M.I. Former Last Name (if applicable) Date of Birth

Student ID No. _____ No student ID, or don't remember? Provide Social Security No. _____
*Why do we ask for SSN? NorthwoodTech.edu/SSN

I've taken classes at Northwood Technical College and/or WITC in the past.

Email address (required as email is primary method of communication by the college)

Home phone Cell phone

Home address

City State ZIP Code

Resident of (check one): Township Village City County School District

Last high school attended:

Highest grade COMPLETED (K-12): _____

The following information is required for state and federal reporting purposes and will be kept confidential.

Gender: Male Female

Ethnicity: Hispanic/Latino origin? Yes No

Race (check all that apply):

- American Indian/Alaska Native
- Asian
- Black/African American
- Native Hawaiian/Other Pacific Islander
- White

OFFICE USE ONLY	
Term _____	
Received by _____	
Date registration entered _____	

Highest Credential Earned

- No Credential
- GED
- HSED
- High School Diploma
- Some college credit
- Short-term diploma or certificate
- 1yr Diploma
- 2yr Diploma
- Associate Degree
- Associate Degree
Plus Additional Credential
- Baccalaureate
- More than Baccalaureate
- Student Declined/Unknown

It is your responsibility to contact Northwood Tech to officially drop a class. If you decide to drop, you should do so immediately as a single day can affect your refund amount. A full refund will be given if you notify Northwood Tech prior to the first scheduled class meeting.

CLASS NO.	CATALOG NO.	CLASS TITLE	LOCATION	START DATE	CLASS FEE
Once registered for a course(s), you have created a liability with Northwood Tech and a promise to pay.					TOTAL

A full detailed Annual Security Report can be located at the following link: www.northwoodtech.edu/annualsecurityreport
Northwood Tech is an Equal Opportunity/Access/Affirmative Action/Veterans/Disability Employer and Educator.

Traffic-Related Registration: Motorcycle, Traffic Safety, Group Dynamics, Multiple Offender

Driver's License Number _____ Assessment Agency and Date _____

Youth Registration: With parent/guardian approval, Northwood Tech courses are open to students age 16 or younger when the course meets outside student's normal school hours. Some courses may have minimum age prerequisites.

Parent/Legal Guardian name: _____ (please print) Signature: _____ Date: _____

Agency Bill/Sponsored Registration: If an agency or employer has agreed to pay your tuition, provide organization name, signature and attach written authorization.

Name of Business/Agency or EMS/Fire Sponsor: _____

I authorize Northwood Tech to forward information regarding the completion of this course to the sponsor listed on the line above.

Student Signature _____ 07.23.21

PAYMENT METHOD: <input type="checkbox"/> Check/money order payable to Northwood Technical College CK # _____ <input type="checkbox"/> Cash <input type="checkbox"/> Agency bill (complete section above)	
<input type="checkbox"/> Credit Card No. _____ (Mastercard/Visa/Discover)	Exp. Date _____ Security Code _____ (month/year)
Name on Card _____	Cardholder Signature _____



KEEP ON TRUCKIN'

Truck Driving | Class B CDL Permit Prep

"I was nervous being a female student entering a nontraditional field, but Ms. Running was welcoming and made me feel like I belonged there. Because of her ongoing support and determination to see me succeed, I passed my CDL exam and was on the road two weeks later. I highly recommend the CDL program at Northwood Technical College!"

- CDL Student

See courses on pages 25-26, visit NorthwoodTech.edu or contact an Admissions Advisor at **800.243.9482** to learn more.



Northwood
Technical College

Northwood Technical College
1900 College Drive
Rice Lake, WI 54868