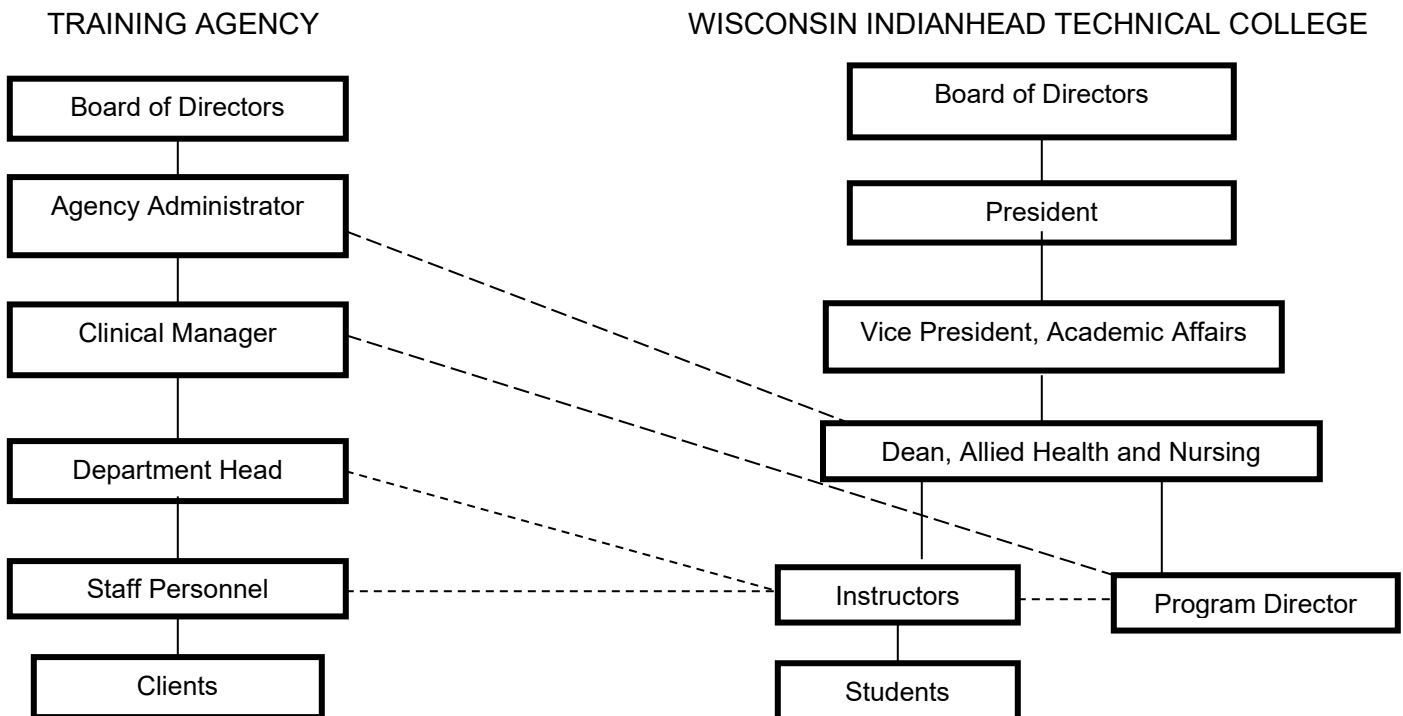


# EXHIBIT A

## WISCONSIN INDIANHEAD TECHNICAL COLLEGE EXTENDED LABORATORY EXPERIENCE

### OCCUPATIONAL THERAPY ASSISTANT

- A. General objectives of the Extended Laboratory Experience are to provide the student an opportunity to:
1. Observe and participate in the roles and relationships of the various levels of health care personnel.
  2. Reinforce their theoretical knowledge by applying facts and principles derived from theory to meet health needs and to promote optimal health practices.
  3. Experience the actual job setting prior to employment in that setting as an occupational therapy assistant. Within this setting the student shall have opportunity to:
    - a. Practice within the distinct role and responsibility of the occupational therapy assistant
    - b. Serve a diverse population in a variety of systems that are consistent with entry-level practice
    - c. Value lifelong learning and the need to keep current with best practice
    - d. Apply occupational therapy principles and intervention tools to achieve expected outcomes
    - e. Demonstrate professional behaviors, ethical standards, values, and attitudes of the occupational therapy profession
    - f. Advocate for the profession, services, and consumers
- B. Communication between agencies will follow the lines portrayed in the following diagram.



The dotted lines (-----) indicate communication, coordinator and consultative relationships.  
The straight lines (\_\_\_\_) indicate direct responsibility and accountability.

(OVER)

## **OCCUPATIONAL THERAPY ASSISTANT - continued**

C. Evaluation of Extended Laboratory Experience shall be according to the following guidelines:

1. Individual course evaluation

After each of the health careers courses, input will be obtained from faculty, students, and agency staff regarding the following items:

- (a) Attainment of course objectives.
- (b) Conduciveness of agency climate to student learning.
- (c) Competency of faculty teaching in the agency.
- (d) Future planning and development.

2. Program Evaluation

At the completion of each health career program, input will be obtained from faculty, students, and agency staff regarding the following items:

- (a) Achievement of purposes and overall objectives of the program.
- (b) Future planning and development.